

INTERNATIONAL ETCHELLS CLASS
2024 North American Championship
Corinthian Yacht Club
Marblehead MA
October 9-13, 2024

SAILING INSTRUCTIONS
POSTED October 10, 2024

The notation [DP] in a rule in the notice of race or the sailing instructions means that the penalty for a breach of that rule may, at the discretion of the protest committee, be less than disqualification. The notation [NP] in a rule means that a boat may not protest another boat for breaking this rule. This changes rule 60.1(a).

1 RULES

- 1.1 The Organizing Authority (OA) is the Corinthian Yacht Club in conjunction with Etchells Fleet 4.
- 1.2 The event will be governed by the *rules* as defined in *The Racing Rules of Sailing* (RRS) and the rules of the International Etchells Class Association at:
<https://www.sailing.org/tools/documents/ETC2021CR20210212v1-%5b26953%5d.pdf>
- 1.3 The following US Prescriptions will apply: RRS 60.3, 61.4, 67, 76.1 and Appendix R. These are attached as Addendum A.
- 1.4 RRS APPENDIX V1 is in effect.
- 1.5 RRS APPENDIX T: ARBITRATION T1, T2, T3 and T4 will apply as changed: T1(b) A post-race penalty is a 20% Scoring Penalty if taken before the protest time limit or a 30% Scoring Penalty if taken after the protest time limit but before the beginning of a hearing involving the incident. Scoring Penalty calculated as stated in rule 44.3(c). However, RRS 44.1(a) applies.
- 1.6 In case of conflict between the Notice of Race (NoR) and the Sailing Instructions (SI), the SIs shall prevail. This changes RRS 63.7.

2 CHANGES TO SAILING INSTRUCTIONS

Any change to the SI will be posted before 0900 on the day it will take effect, except that any change to the schedule of races will be posted by 1830 on the day before it will take effect.

3 COMMUNICATIONS WITH COMPETITORS

- 3.1 Notices to competitors will be posted on the Official Notice Board (ONB) located online at [YachtScoring.com](https://yachtscoring.com) <https://yachtscoring.com/emenu.cfm?eID=16328>. As a courtesy, announcements on WhatsApp may alert competitors to new notices. QR codes will be posted around the venue with the link to join the group.
- 3.2 The race office is located at Corinthian Yacht Club beneath the porch by the flagpole on the harbour side.
- 3.3 On the water, the race committee (RC) intends to monitor and communicate with competitors on VHF channel 67.
- 3.4 [DP] From the first warning signal until the end of the last race of the day, except in an emergency, a boat shall not make voice or data transmissions and shall not receive voice or data communication that is not available to all boats.
- 3.5 On shore, the OA, race committee (RC) and protest committee will communicate with competitors

using WhatsApp. The QR code to join this group will be available at the venue, posted on the [event website](#). Failure to receive messages shall not be grounds for redress and changes RRS 62.1(a).

4 CODE OF CONDUCT

- 4.1 [DP] Competitors and support persons shall comply with reasonable requests from the OA and all race officials.
- 4.2 This event will be conducted in accordance with the Etchells Class Code of Conduct which is available on the IECA website https://etchells.org/assets/documents/Code_of_Conduct_Approved_2023.07.25.pdf Competitors are required to sign the Code of Conduct at, or prior to, registration for the event. Failure by a competitor to sign the Code of Conduct may result in the competitor being ineligible to participate in the event.

5 SIGNALS MADE ASHORE

- 5.1 Signals made ashore will be displayed on the yardarm of the Corinthian Yacht Club flagpole.
- 5.2 When flag AP is displayed ashore, '1 minute' is replaced with 'not less than 60 minutes' in Race Signals AP.

6 SCHEDULE

6.1

Tuesday, Oct 8	TBD	Early Launching (Arrange in advance with Event Chair)
Wednesday, Oct 9	13.00 – 18.00	Registration, weigh-in and launching
Thursday, Oct 10	09.00 – 18.00 13.00 18.00 18.30	Registration, weigh-in, launching Practice starts (3) and practice race (1) All boats afloat Welcome reception Corinthian Yacht Club
Friday, Oct 11	08.00 – 09.00 09.00 11.00	Weigh-in Competitors' Meeting Warning signal – first race of the day (subsequent races to follow)
Saturday, Oct 12	09.00 11.00 18.30	Competitors' Briefing Warning signal – first race of the day (subsequent races to follow) Regatta Dinner – Corinthian Yacht Club Dining Room
Sunday, Oct 13	09.00 11.00 14.00 TBD	Competitors' briefing Warning signal – first race of the day (subsequent races to follow) No warning signal after this time Awards

- 6.2 Eight (8) races are scheduled.
- 6.3 On the last scheduled day of racing no warning signal will be made after 1400.

7 CLASS FLAGS

The class flag will be the Etchells Class insignia on a white background.

8 RACING AREA

The racing area will be in the waters of Massachusetts Bay. Please see Addendum B for a chart of the

race area.

9 COURSES

- 9.1 The courses shall be in a windward-leeward configuration. See Addendum C.
- 9.2 No later than the display of the orange line flag, the RC Signal vessel will display the course to be sailed, the approximate compass bearing and distance of the first leg.
- 9.3 If only a single windward or leeward mark is present, boats shall leave that mark to port before proceeding to the next mark of the course.

10 MARKS

- 10.1 Marks of the course will be yellow tetrahedrons.
- 10.2 The starting marks will be the RC Signal vessel at the starboard end displaying an orange flag and a RC Pin vessel displaying an orange flag or a green tetrahedron.
- 10.3 The finishing marks will be an RC vessel displaying a blue flag at the starboard end and either a Pin vessel at the port end or a green tetrahedron.
- 10.4 Change marks, as provided in SI 13, are pink tetrahedrons, and subsequent change will revert to yellow.

11 BLANK

This SI is intentionally left blank.

12 THE START

- 12.1 Races will be started using RRS 26.
- 12.2 [DP] Prior to the first warning signal of the first race of the day, boats shall sail on starboard tack, passing the stern of the RC Signal vessel displaying flag L, stating sail numbers and the number souls onboard.
- 12.3 To alert boats that a race or sequence of races will begin soon, the orange starting line flag(s) will be displayed with one (1) sound at least five (5) minutes before a warning signal is made.
- 12.4 The starting line will be between a staff displaying an orange flag on the RC Signal vessel at the starboard end and the course side of a staff displaying an orange flag on the RC Pin vessel or a green inflatable mark at the port end of the line.
- 12.5 A boat that does not start within five (5) minutes after her starting signal will be scored Did Not Start (DNS) without a hearing. This changes RRS A5.1 and A5.2.
- 12.6 If any part of a boat's hull is on the course side of the starting line at the starting signal and the boat is identified, the RC will attempt to broadcast her bow or sail number. The failure to identify a boat, make a broadcast, a boat failing to hear a broadcast or the order and interval of transmission will not be grounds for redress. This changes RRS 62.1(a).

13 CHANGE OF THE NEXT LEG OF THE COURSE

- 13.1 To change the next leg of the course, the RC will lay a new mark (or move the finishing line) and remove the original mark as soon as practicable. When in a subsequent change a new mark is replaced, it will be replaced by an original mark.
- 13.2 If Mark 1 is changed/moved, Mark 1a may not be reset.
- 13.3 The RC may adjust the course during a race, provided no boats are on the leg to be adjusted, of no more than 10 degrees or 0.1nm, to maintain course alignment, without signalling a change. This changes RRS 33.

14 THE FINISH

The finishing line will be between a staff displaying a blue flag on the finishing/Signal vessel/s and the course side of either a nearby mark or a staff displaying a blue flag on a RC vessel.

15 PENALTY SYSTEM

- 15.1 A boat that has taken a penalty or retired under RRS 44.1 shall complete and submit a written acknowledgment form which will be available online, within the protest time limit.
- 15.2 Except for breaking a rule of Part 2, or RRS 31, the protest committee may impose a discretionary penalty [DP] less than disqualification, in accordance with RRS 64.2.

16 TIME LIMITS [AND TARGET TIMES]

- 16.1 The Mark 1 Time Limit, Race Time Limit (see RRS 35), and the Finishing Window are shown in the table below.

Mark 1 Time Limit	Race Target Time	Race Time Limit	Finishing Window
45 minutes	90 minutes	120 minutes	20 minutes

- 16.2 If no boat has passed the first mark within the Mark 1 Time Limit, the race will be abandoned.
- 16.3 The Finishing Window is the time for boats to finish after the first boat sails the course and finishes. Boats failing to finish within the Finishing Window, and not subsequently retiring, penalized or given redress, will be scored Time Limit Expired (TLE) without a hearing. A boat scored TLE shall be scored points for the finishing place one more than the points scored by the last boat that finished within the Finishing Window. This changes RRS 35, A5.1, A5.2 and A10.
- 16.4 Failure to meet the Target Time will not be grounds for redress. This changes RRS 62.1(a).

17 HEARING REQUESTS

- 17.1 The protest time limit is 60 minutes after the signal vessel docks. The time will be posted on the Official Notice Board.
- 17.2 Hearing request forms are available online <https://yachtscoring.com/emenu.cfm?eID=16328>
- 17.3 Notices will be posted online no later than 30 minutes after the protest time limit to inform competitors of hearings in which they are parties or named as witnesses. As a courtesy, announcements on WhatsApp may alert competitors of new notices from the protest committee.
- 17.4 Hearings will be held in the protest room, located under the porch by the flagpole on the harbour side.
- 17.5 Notices of protests by the RC or protest committee will be posted online to inform boats under RRS 61.1(b).
- 17.6 For boats scored OCS, UFD, or BFD and posted on the Signal vessel and on the ONB before the protest time limit, a request for redress based on such a posted score shall be made only online, and no later than one hour after the protest time limit. This changes RRS 62.2.

18 SCORING

- 18.1 The low point scoring system RRS Appendix A will apply. However, RRS A2 is modified as follows:
 - a) Three (3) races are required to be completed to constitute a series. This changes NoR 15.2.
 - b) When five (5) or more races are completed, a boat's series score will be the total of her race scores excluding her worst score. This modifies RRS A2.
- 18.2 The scoring abbreviation for a discretionary penalty imposed by the protest committee will be DPI.

19 SAFETY REGULATIONS

[DP] A boat that retires from a race shall notify the race committee on VHF 67 at the first reasonable opportunity.

20 REPLACEMENT OF CREW OR EQUIPMENT

20.1 [DP] Substitution of competitors is not allowed without prior written approval of the protest committee.

20.2 [DP] Substitution of damaged or lost equipment is not allowed unless authorized in writing by the technical committee. Requests for substitution shall be made to the committee at the first reasonable opportunity, which may be after the race.

21 EQUIPMENT AND MEASUREMENT CHECKS

21.1 A boat or equipment may be inspected at any time for compliance with the class rules, the NoR and the SI.

21.2 [DP] When instructed by a race official on the water, a boat shall proceed to a designated area for inspection.

21.3 All written requests for crew or equipment change will be answered, in writing, and posted on the official notice board.

22 OFFICIAL VESSELS

Official vessels will be identified as follows:

Boat	Flag
RC Signal	Blue RC
RC Mark and Pin	Yellow RC
Judge	Blue and White US Sailing Judge's flag
Photo/Media	Media flag or a flag with a blue "P" on a white background

23 [DP] COACH AND SUPPORT VESSELS

23.1 All coach and support vessels, as well as the designated responsible person, shall register in the Corinthian YC Ballroom during Registration/check-in and shall comply with local law and event support regulations. Vessels shall display identifying flags at all times while they are acting as a coach or support vessel.

23.2 All registered coach and support vessels shall carry on board, and operate while on the water, a VHF radio capable of transmitting and receiving on USA VHF channels and agree to assist the RC if directed to do so.

23.3 Competitors shall have no communication with, and boats shall not be tied to, coach or support boats from 5 minutes before the first scheduled Warning Signal of the day until racing has been concluded for the day (Discretionary Penalty applies). The 5-minute notification method will be identified by the displaying of the orange starting line flags. Between races, coach or support boats shall not approach, communicate with or transfer provisions or equipment to or from their supported boats unless in a medical or emergency requirement threatening the health of the crew or the flotation of the boat and only with the expressed permission of the Race Committee.

23.4 Coaches and support vessels shall stay outside areas where boats are racing (i.e., upwind lay lines) from the time of the first scheduled warning signal of the day until racing has been concluded for the day. Unless instructed by the RC, coach and support vessels are not allowed:

i. within 100 yards of the starting line after the warning signal for a start sequence,

- ii. inside the racecourse during a race,
- iii. to be within 100 yards of competing boats (including mark roundings).

23.5 All open cockpit coach and support vessels shall be equipped with a functioning engine safety cut-off switch (kill switch) which shall remain attached to the person at the helm, at all times, while the engine is running. Failure to comply may be subject of a support person hearing under RRS 64.5.

24 TRASH DISPOSAL AND SUSTAINABILITY

- 24.1 Trash may be placed aboard official vessels.
- 24.2 Use of single-use plastic water bottles is discouraged.
- 24.3 Water bottles may be refilled at a filling station ashore near the downstairs restroom.
- 24.4 [DP] Recyclable waste should be placed in the clearly marked receptacles.

25 HAUL-OUT RESTRICTIONS

[DP] Boats shall not be hauled out during the event except with and according to the terms of prior written permission of the Chief Judge.

26 DIVING EQUIPMENT AND PLASTIC POOLS

[DP] Plastic pools or their equivalent shall not be used around boats while afloat.

27 PRIZES

Prizes will be given in accordance with NoR 24.

28 RISK STATEMENT

RRS 3 states: 'The responsibility for a boat's decision to participate in a race or to continue to race is hers alone.' By participating in this event each competitor agrees and acknowledges that sailing is a potentially dangerous activity with inherent risks. These risks include strong winds and rough seas, sudden changes in weather, failure of equipment, boat handling errors, poor seamanship by other boats, loss of balance on an unstable platform and fatigue resulting in increased risk of injury.

Inherent in the sport of sailing is the risk of permanent, catastrophic injury or death by drowning, trauma, hypothermia or other causes.

29 FURTHER INFORMATION AND CONTACTS

Event Co-chair – Michael Jobin jobin_michael@hotmail.com

Event Co-Chair – Paul McLaughlin pvmcl@aol.com

PRO - Shannon Bush swmadero@gmail.com

Chief Judge – Steven Wolff sawolff17@gmail.com

Sailing Director – Seamus Kraft 781-309-7705

Club Manager – Dave Titus 781-631-0005 x204

SI ADDENDUM A
2024 Etchells North American
Championships
US Sailing Prescriptions

Rule 60.3 After RRS 60.3 add

US Sailing prescribes that rule 60.3(b) is changed to:

(b) request redress for a boat or call a hearing to consider redress;

Rule 61.4 Add RRS 61.4

61.4 Fees for Protests and Requests for Redress

US Sailing prescribes that no fees shall be charged for protests or requests for redress.

Rule 67 After RRS 67 add

US Sailing prescribes that:

(a) A boat that retires from a race or accepts a penalty does not, by that action alone, admit liability for damages.

(b) A protest committee shall find facts and make decisions only in compliance with the rules. No protest committee or US Sailing appeal authority shall adjudicate any claim for damages. Such a claim is subject to the jurisdiction of the courts.

(c) A basic purpose of the rules is to prevent contact between boats. By participating in an event governed by the rules, a boat agrees that responsibility for damages arising from any breach of the rules shall be based on fault as determined by application of the rules, and that she shall not be governed by the legal doctrine of 'assumption of risk' for monetary damages resulting from contact with other boats.

Rule 76.1 After rule 76.1 add

US Sailing prescribes that an organizing authority or race committee shall not reject or cancel the entry of a boat or exclude a competitor eligible under the notice of race and sailing instructions for an arbitrary or capricious reason or for reason of race, color, religion, national origin, gender, sexual orientation, or age.

APPENDIX R

PROCEDURES FOR APPEALS AND REQUESTS

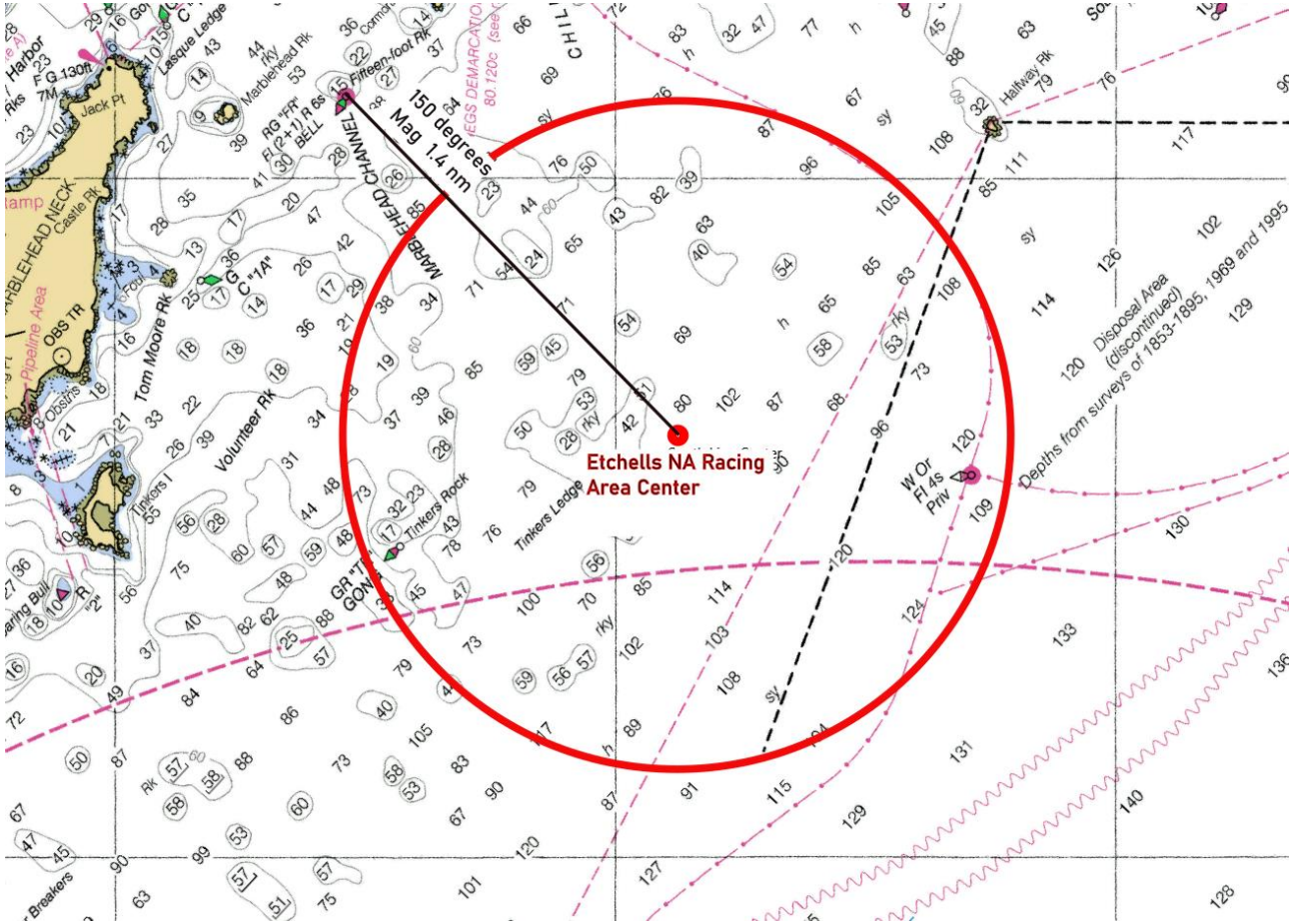
This appendix is a US Sailing prescription.

See rules 70 and 71. This appendix replaces Appendix R as adopted by World Sailing for the purpose of creating a two-level appeals system. The US Sailing Appeals Committee acts as the national authority under rule 71.

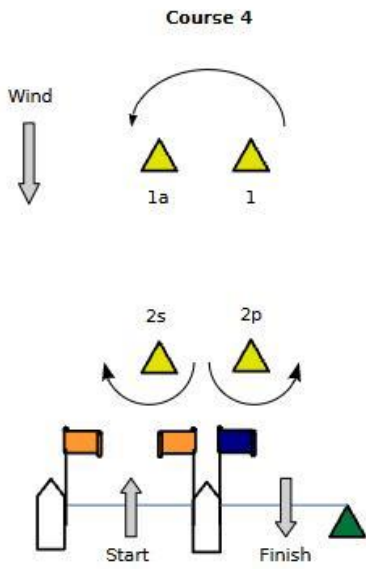
Frequently Asked Questions (FAQ) on the appeals system and their answers, including advice on how to prepare an appeal, can be found on the US Sailing website. Go to [Appeals - US Sailing](#) and click the 'Appeals FAQ' link.

Appeals FAQ may also be accessed here: [Appeal-FAQ-rev-2.14.19-1.pdf \(ussailing.org\)](#)

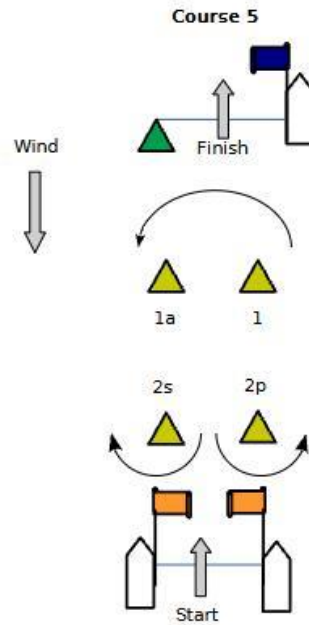
SI ADDENDUM B
RACE AREA



SI ADDENDUM C COURSES



Start-1-1a-2s/2p-1-1a-Finish



Start-1-1a-2s/2p-1-1a-2s/2p-Finish