

Addendum 1-Courses

2024 Ida Lewis Distance Race Course Booklet

1. Mark Register

2 (a,b & c). "A" Course Description

3 (a,b & c). "R" Course Descriptions

4 (a,b, c & d). Course Plots

NOT FOR NAVIGATION

1. 2024 ILDR MARK REGISTER

Mark #	Prospective Marks of the Course Mark Name	Approx Lat	Approx Long	Notes	Courses										
					1	2	3	4	5	6	7	8	9	10	
START	RC Approx. Location	41 29.5 N	071 21.29 W	Rendezvous Area	x	x	x	x	x	x	x	x	x	x	x
FINISH	G"3" Bell, FL G 2.5s	41 28.90 N	071 19.611 W	See SI's for Details.	x	x	x	x	x	x	x	x	x	x	x
1	Yellow Tetrahedron	41 28.81 N	071 19.16 W	Approaching the Finish	x	x	x	x	x	x	x	x	x	x	x
2	G"11" QG Bell	41 29.01 N	071 21.037 W	E of Clingstone	x	x	x	x	x	x	x	x	x	x	x
3	R"6" Bell	41 27.453 N	071 21.984 W	SW of Castle Hill	x	x	x	x	x	x	x	x	x	x	x
4	RW "NB" Mo(A)	41 23.000 N	071 23.359 W	E of Scarborough Hills	x	x	x	x	x	x	x	x	x	x	x
5	Buzzard Bay Tower	41 23.820 N	071 02.082 W	RI Sound	x	x	x	x	x	x	x	x	x	x	x
6	G"9" FL G4s Gong	41 10.460 N	071 57.066 W	Cerberus Shoal	x		x								
7	GR BIS FL (2+1) G 6S	41 06.960 N	071 43.109 W	ENE of Montauk PT	x	x									x
8	Virtual Mark Cox Ledge #2	41 04.196 N	071 11.886 W	SW Corner of Cox Ledge Obs.		x		x	x	x	x				
9	Virtual Mark Cox Ledge #3	41 04.755 N	070 49.185 W	SE Corner of Cox Ledge Obs.		x		x	x	x	x			x	x
10	Virtual Mark Cox Ledge #4	41 08.977 N	070 49.680 W	NE Corner of Cox Ledge Obs.		x		x	x	x	x			x	x
11	G"1", FL G 4s, GONG	41 06.117 N	071 46.374 W	ENE Montauk			x	x	x	x	x	x			
12	G "1BI", FL G4s, BELL	41 15.439 N	071 34.555 W	N of Block Island											x
13	R "2" FI R 6s Bell	41 17.979 N	071 51.554 W	S of Watch Hill					x		x	x			x
14	G"1GI" FL G 4s Gong	41 08.993 N	072 08.937	SE of Plumb Island						x	x				
15	RW "SH" Mo(A) Whis	40 49.003 N	072 28.576 W	S of Shinnecock Bay									x	x	x

Cox Ledge Obstruction		
Virtual Cox Ledge #1	41 09.659 N	071 16.706 W
Virtual Cox Ledge #2	41 04.196 N	071 11.886 W
Virtual Cox Ledge #3	41 04.755 N	070 49.185 W
Virtual Cox Ledge #4	41 08.977 N	070 49.680 W
Virtual Cox Ledge #5	41 14.681 N	071 03.028 W
Virtual Cox Ledge #6	41 14.681 N	071 11.515 W

2(a). 2024 ILDR "A" Course Descriptions

Course 1				Course 2			
Official Dist (NM)	104			Official Dist (NM)	114		
	Mark #	Leave To	Mark Description		Mark #	Leave To	Mark Description
Start			Start	Start			Start
	2	Stbd	G"11" QG Bell		2	Stbd	G"11" QG Bell
	3	Port	R"6" Bell		3	Port	R"6" Bell
	6	Port	G"9" FL G 4s Gong		7	Port	GR BIS FL (2+1) G 6s
	7	Port	GR BIS FL (2+1) G 6s		8	Port	Virtual Cox Ledge #2
	5	Port	Buzzards Bay Tower		9	Port	Virtual Cox Ledge #3
	4	Stbd	RW "NB" Mo(A)		10	Port	Virtual Cox Ledge #4
	3	Stbd	R"6" Bell		5	Port	Buzzards Bay Tower
	1	Stbd	Yellow Tetranhedron/SI 9.2		4	Stbd	RW "NB" Mo(A)
Finish			Finish	Finish	3	Stbd	R"6" Bell
					1	Stbd	Yellow Tetranhedron/ SI 9.2
							Finish

Course 3				Course 4			
Official Dist (NM)	135			Official Dist (NM)	150		
	Mark #	Leave To	Mark Description		<i>Mark #</i>	Leave To	Mark Description
Start			Start	Start			Start
	2	Stbd	G"11" QG Bell		2	Stbd	G"11" QG Bell
	3	Port	R"6" Bell		3	Port	R"6" Bell
	4	Port	RW "NB" Mo(A)		4	Port	RW "NB" Mo(A)
	5	Stbd	Buzzards Bay Tower		5	Stbd	Buzzards Bay Tower
	6	Port	G"9" FL G 4s Gong		11	Port	G"1" FL G 4s GONG
	11	Port	G"1" FL G 4s GONG		8	Port	Virtual Cox Ledge #2
	5	Port	Buzzards Bay Tower		9	Port	Virtual Cox Ledge #3
	4	Stbd	RW "NB" Mo(A)		10	Port	Virtual Cox Ledge #4
	3	Stbd	R"6" Bell		5	Port	Buzzards Bay Tower
	1	Stbd	Yellow Tetranhedron/ SI 9.2		4	Stbd	RW "NB" Mo(A)
Finish			Finish	Finish	3	Stbd	R"6" Bell
					1	Stbd	Yellow Tetranhedron/ SI 9.2
							Finish

2 (b).

Course 5				Course 6			
Official Dist (NM)	160			Official Dist (NM)	180		
	Mark #	Leave To	Mark Description		Mark #	Leave To	Mark Description
Start			Start	Start			Start
	2	Stbd	G"11" QG Bell		2	Stbd	G"11" QG Bell
	3	Port	R"6" Bell		3	Port	R"6" Bell
	4	Port	RW "NB" Mo(A)		4	Port	RW "NB" Mo(A)
	5	Stbd	Buzzards Bay Tower		5	Stbd	Buzzards Bay Tower
	13	Port	R "2" FL R 6s Bell		14	Port	G "1GI" FL G4s Gong
	11	Port	G"1" FL G 4s Gong		11	Port	G"1" FL G 4s Gong
	8	Port	Virtual Cox Ledge #2		8	Port	Virtual Cox Ledge #2
	9	Port	Virtual Cox Ledge #3		9	Port	Virtual Cox Ledge #3
	10	Port	Virtual Cox Ledge #4		10	Port	Virtual Cox Ledge #4
	5	Port	Buzzards Bay Tower		5	Port	Buzzards Bay Tower
	4	Stbd	RW "NB" Mo(A)		4	Stbd	RW "NB" Mo(A)
	3	Stbd	R"6" Bell		3	Stbd	R"6" Bell
	1	Stbd	Yellow Tetranhedron/SI 9.2		1	Stbd	Yellow Tetranhedron/SI 9.2
Finish			Finish	Finish			Finish

Course 7				Course 8			
Official Dist (NM)	181.5			Official Dist (NM)	205		
	Mark #	Leave To	Mark Description		Mark #	Leave To	Mark Description
Start			Start	Start			Start
	2	Stbd	G"11" QG Bell		2	Stbd	G"11" QG Bell
	3	Port	R"6" Bell		3	Port	R"6" Bell
	4	Port	RW "NB" Mo(A)		4	Port	RW "NB" Mo(A)
	5	Stbd	Buzzards Bay Tower		5	Stbd	Buzzards Bay Tower
	13	Port	R "2" FL R 6s Bell		13	Port	R "2" FL R 6s Bell
	14	Port	G "1GI" FL G 4s Gong		11	Stbd	G"1" FL G 4s Gong
	11	Port	G"1" FL G 4s Gong		15	Port	RW "SH" Mo(A) Whis
	8	Port	Virtual Cox Ledge #2		5	Port	Buzzards Bay Tower
	9	Port	Virtual Cox Ledge #3		4	Stbd	RW "NB" Mo(A)
	10	Port	Virtual Cox Ledge #4		3	Stbd	R"6" Bell
	5	Port	Buzzards Bay Tower		1	Stbd	Yellow Tetranhedron/SI 9.2
	4	Stbd	RW "NB" Mo(A)				Finish
	3	Stbd	R"6" Bell				Finish
	1	Stbd	Yellow Tetranhedron /SI 9.2				Finish
Finish			Finish				Finish

2 (c).

Course 9				Course 10			
Official Dist (NM)	220			Official Dist (NM)	234		
	Mark #	Leave To	Mark Description		Mark #	Leave To	Mark Description
	Start		Start		Start		Start
	2	Stbd	G"11" QG Bell		2	Stbd	G"11" QG Bell
	3	Port	R"6" Bell		3	Port	R"6" Bell
	4	Port	RW "NB" Mo(A)		4	Port	RW "NB" Mo(A)
	5	Stbd	Buzzards Bay Tower		5	Stbd	Buzzards Bay Tower
	15	Port	RW "SH" Mo(A) Whis		12	Stbd	G "1Bl" FL G 4s Bell
	9	Port	Virtual Cox Ledge #3		13	Port	R "2" FL R 6s Bell
	10	Port	Virtual Cox Ledge #4		7	Stbd	GR BIS FL (2+1) G 6s
	5	Port	Buzzards Bay Tower		15	Port	RW "SH" Mo(A) Whis
	4	Stbd	RW "NB" Mo(A)		9	Port	Virtual Cox Ledge #3
	3	Stbd	R"6" Bell		10	Port	Virtual Cox Ledge #4
	1	Stbd	Yellow Tetranhedron SI/ 9.2		5	Port	Buzzards Bay Tower
	Finish		Finish		4	Stbd	RW "NB" Mo(A)
					3	Stbd	R"6" Bell
					1	Stbd	Yellow Tetranhedron SI /9.2
					Finish		Finish

3 (a). 2024 ILDR "R" Course Descriptions

Course 1 R				Course 2R			
Official Dist (NM)	104			Official Dist (NM)	114		
	Mark #	Leave To	Mark Description		Mark #	Leave To	Mark Description
Start			Start	Start			Start
	2	Stbd	G"11" QG Bell		2	Stbd	G"11" QG Bell
	3	Port	R"6" Bell		3	Port	R"6" Bell
	4	Port	RW "NB" Mo(A)		4	Port	RW "NB" Mo(A)
	5	Stbd	Buzzards Bay Tower		5	Stbd	Buzzards Bay Tower
	7	Stbd	GR BIS FL (2+1) G 6s		10	Stbd	Virtual Cox Ledge #4
	6	Stbd	G"9" FL G 4s Gong		9	Stbd	Virtual Cox Ledge #3
	3	Stbd	R"6" Bell		8	Stbd	Virtual Cox Ledge #2
Finish	1	Stbd	Yellow Tetranhedron/SI 9.2	7	Stbd	GR BIS FL (2+1) G 6s	
			Finish	3	Stbd	R"6" Bell	
				1	Stbd	Yellow Tetranhedron/ SI 9.2	
						Finish	

Course 3R				Course 4R			
Official Dist (NM)	135			Official Dist (NM)	150		
	Mark #	Leave To	Mark Description		Mark #	Leave To	Mark Description
Start			Start	Start			Start
	2	Stbd	G"11" QG Bell		2	Stbd	G"11" QG Bell
	3	Port	R"6" Bell		3	Port	R"6" Bell
	4	Port	RW "NB" Mo(A)		4	Port	RW "NB" Mo(A)
	5	Stbd	Buzzards Bay Tower		5	Stbd	Buzzards Bay Tower
	11	Stbd	G"1" FL G 4s GONG		10	Stbd	Virtual Cox Ledge #4
	6	Stbd	G"9" FL G 4s Gong		9	Stbd	Virtual Cox Ledge #3
	5	Port	Buzzards Bay Tower		8	Stbd	Virtual Cox Ledge #2
	4	Stbd	RW "NB" Mo(A)		11	Stbd	G"1" FL G 4s GONG
	3	Stbd	R"6" Bell		5	Port	Buzzards Bay Tower
Finish	1	Stbd	Yellow Tetranhedron/ SI 9.2	4	Stbd	RW "NB" Mo(A)	
			Finish	3	Stbd	R"6" Bell	
				1	Stbd	Yellow Tetranhedron/ SI 9.2	
						Finish	

3(b).

Course 5R				Course 6R			
Official Dist (NM)	160			Official Dist (NM)	180		
	Mark #	Leave To	Mark Description		Mark #	Leave To	Mark Description
Start			Start	Start			Start
	2	Stbd	G"11" QG Bell		2	Stbd	G"11" QG Bell
	3	Port	R"6" Bell		3	Port	R"6" Bell
	4	Port	RW "NB" Mo(A)		4	Port	RW "NB" Mo(A)
	5	Stbd	Buzzards Bay Tower		5	Stbd	Buzzards Bay Tower
	10	Stbd	Virtual Cox Ledge #4		10	Stbd	Virtual Cox Ledge #4
	9	Stbd	Virtual Cox Ledge #3		9	Stbd	Virtual Cox Ledge #3
	8	Stbd	Virtual Cox Ledge #2		8	Stbd	Virtual Cox Ledge #2
	11	Stbd	G"1" FL G 4s Gong		11	Stbd	G"1" FL G 4s Gong
	13	Stbd	R "2" FL R 6s Bell		14	Stbd	G "1G" FL G4s Gong
	5	Port	Buzzards Bay Tower		5	Port	Buzzards Bay Tower
	4	Stbd	RW "NB" Mo(A)		4	Stbd	RW "NB" Mo(A)
	3	Stbd	R"6" Bell		3	Stbd	R"6" Bell
	1	Stbd	Yellow Tetrahedron/SI 9.2		1	Stbd	Yellow Tetrahedron/SI 9.2
Finish			Finish	Finish			Finish

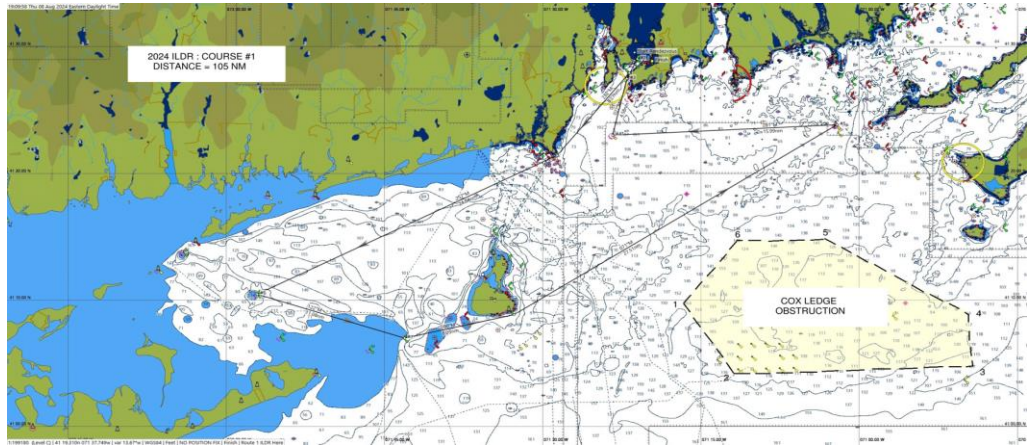
Course 7R				Course 8R			
Official Dist (NM)	181.5			Official Dist (NM)	205		
	Mark #	Leave To	Mark Description		Mark #	Leave To	Mark Description
Start			Start	Start			Start
	2	Stbd	G"11" QG Bell		2	Stbd	G"11" QG Bell
	3	Port	R"6" Bell		3	Port	R"6" Bell
	4	Port	RW "NB" Mo(A)		4	Port	RW "NB" Mo(A)
	5	Stbd	Buzzards Bay Tower		5	Stbd	Buzzards Bay Tower
	10	Stbd	Virtual Cox Ledge #4		15	Stbd	RW "SH" Mo(A) Whis
	9	Stbd	Virtual Cox Ledge #3		11	Port	G"1" FL G 4s Gong
	8	Stbd	Virtual Cox Ledge #2		13	Stbd	R "2" FL R 6s Bell
	11	Stbd	G"1" FL G 4s Gong		5	Port	Buzzards Bay Tower
	14	Stbd	G "1G" FL G 4s Gong		4	Stbd	RW "NB" Mo(A)
	13	Stbd	R "2" FL R 6s Bell		3	Stbd	R"6" Bell
	5	Port	Buzzards Bay Tower		1	Stbd	Yellow Tetrahedron/SI 9.2
	4	Stbd	RW "NB" Mo(A)	Finish			Finish
	3	Stbd	R"6" Bell				
	1	Stbd	Yellow Tetrahedron /SI 9.2				
Finish			Finish				

3 (c).

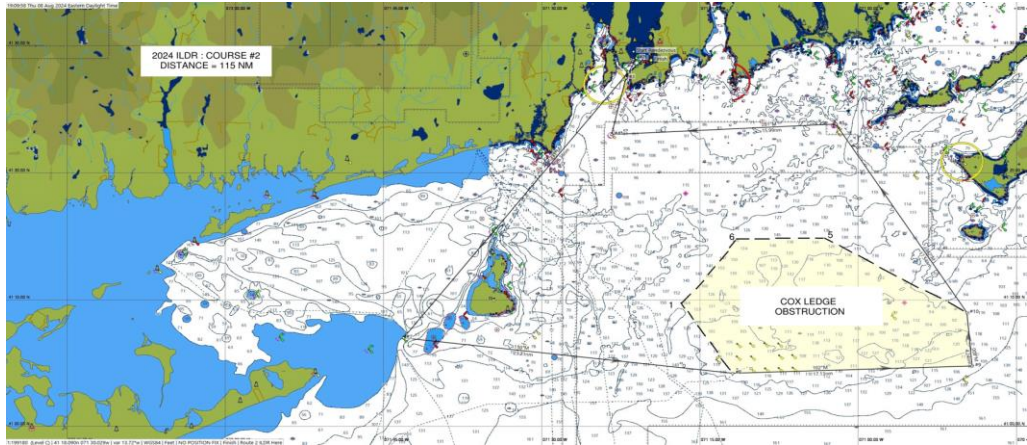
Course 9R				Course 10R			
Official Dist (NM)	220			Official Dist (NM)	234		
	Mark #	Leave To	Mark Description		Mark #	Leave To	Mark Description
Start			Start	Start			Start
	2	Stbd	G"11" QG Bell		2	Stbd	G"11" QG Bell
	3	Port	R"6" Bell		3	Port	R"6" Bell
	4	Port	RW "NB" Mo(A)		4	Port	RW "NB" Mo(A)
	5	Stbd	Buzzards Bay Tower		5	Stbd	Buzzards Bay Tower
	10	Stbd	Virtual Cox Ledge #4		10	Stbd	Virtual Cox Ledge #4
	9	Stbd	Virtual Cox Ledge #3		9	Stbd	Virtual Cox Ledge #3
	15	Stbd	RW "SH" Mo(A) Whis		15	Stbd	RW "SH" Mo(A) Whis
	5	Port	Buzzards Bay Tower		7	Port	GR BIS FL (2+1) G 6s
	4	Stbd	RW "NB" Mo(A)		13	Stbd	R "2" FL R 6s Bell
	3	Stbd	R"6" Bell		12	Port	G "1BI" FL G 4s Bell
	1	Stbd	Yellow Tetrahedron SI/ 9.2		5	Port	Buzzards Bay Tower
Finish			Finish	Finish			Finish
					4	Stbd	RW "NB" Mo(A)
					3	Stbd	R"6" Bell
					1	Stbd	Yellow Tetrahedron SI /9.2

4 (a). 2024 ILDR Course Plots 1-3

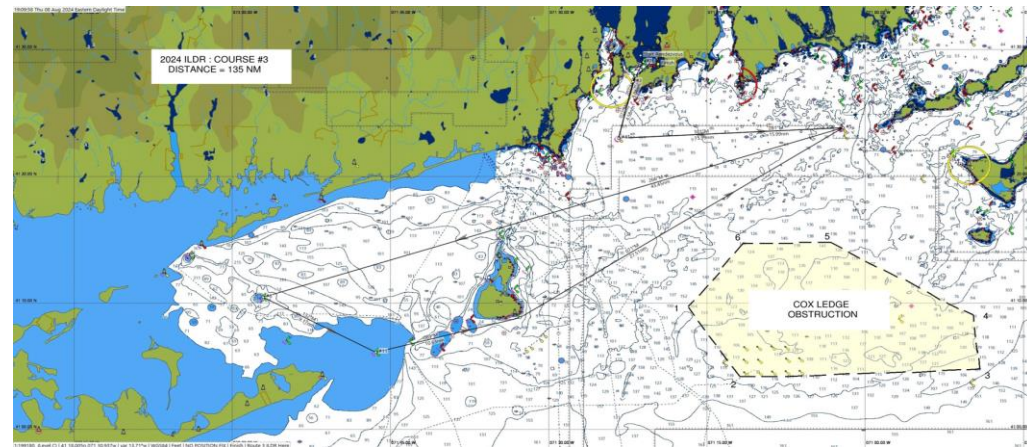
Course 1



Course 2

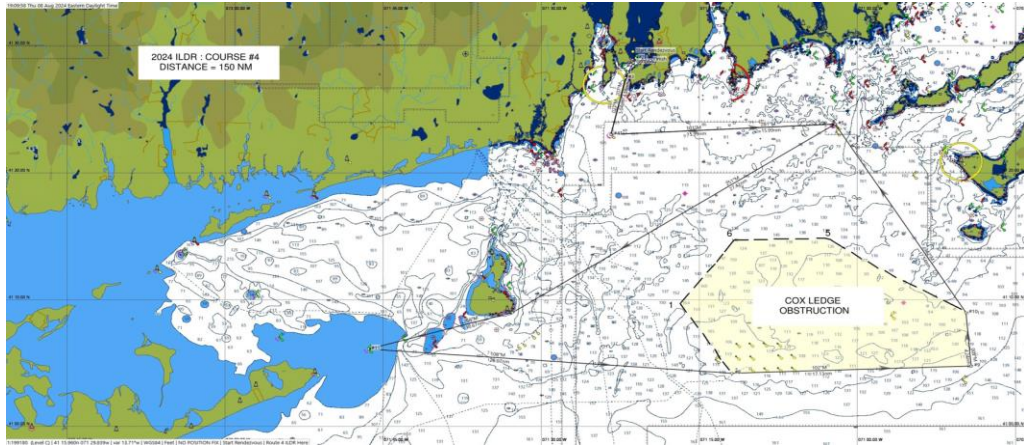


Course 3

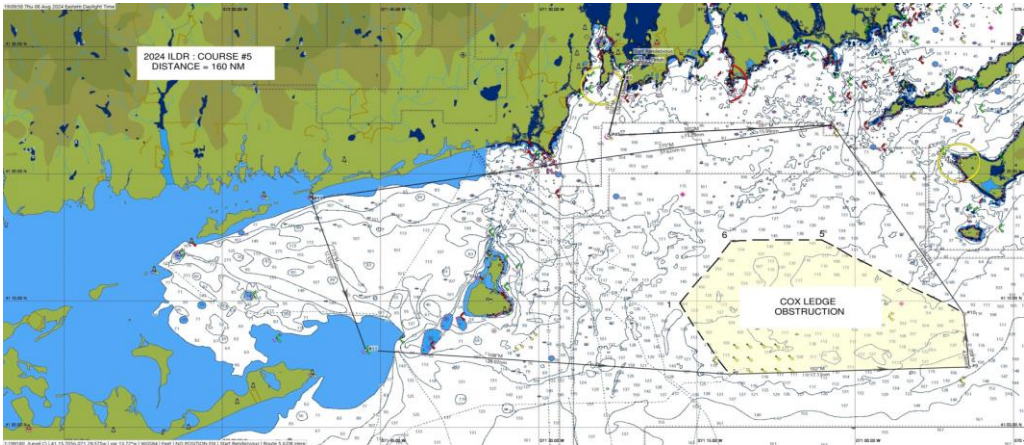


4 (b). 2024 ILDR Course Plots 4-6

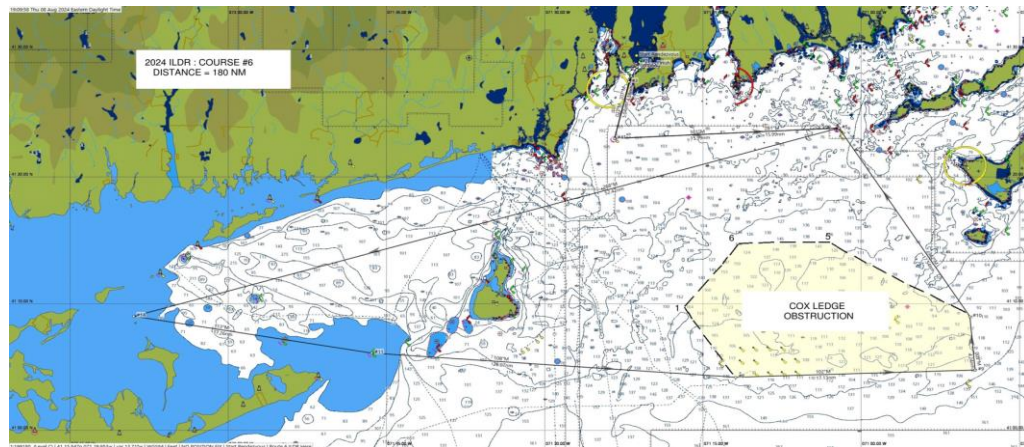
Course 4



Course 5

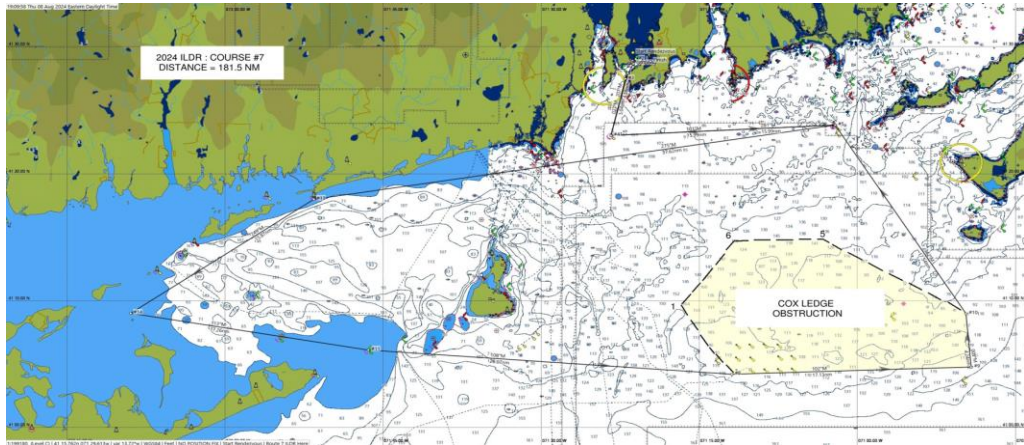


Course 6

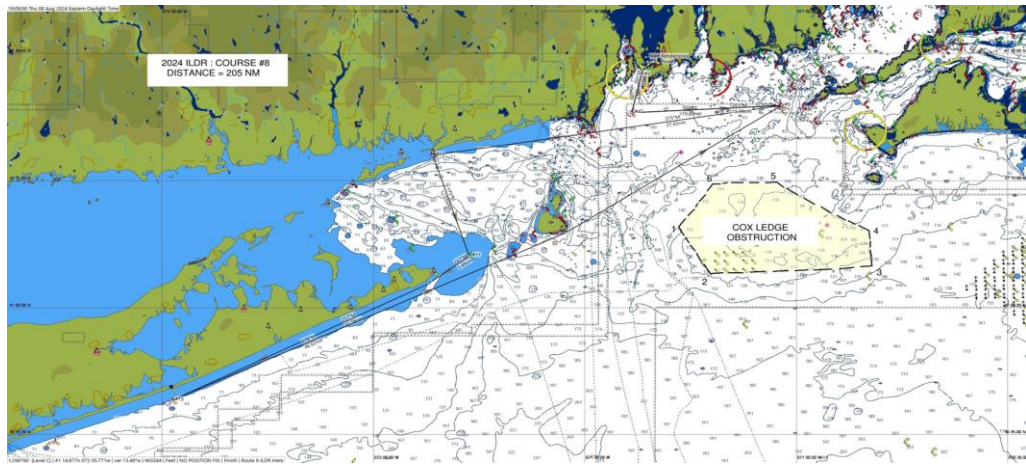


4 (c). 2024 ILDR Course Plots 7-9

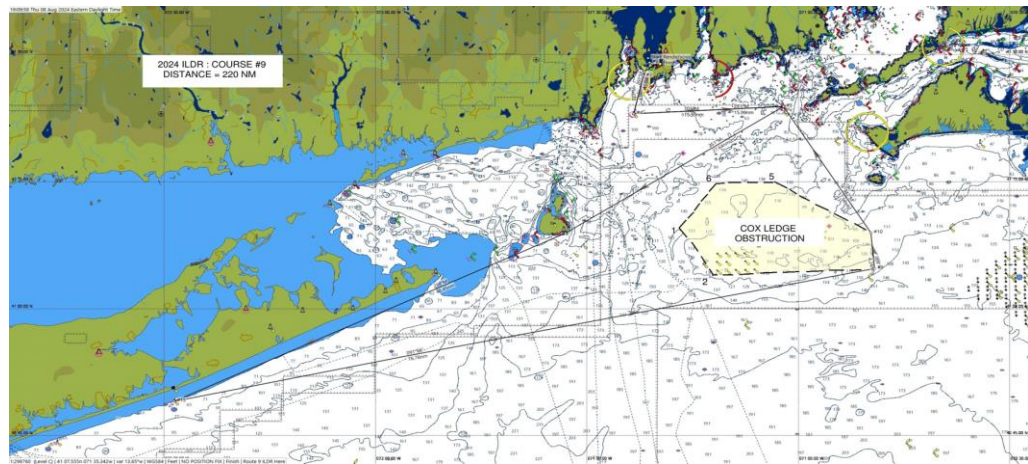
Course 7



Course 8



Course 9



4 (d). 2024 ILDR Course Plots 10

Course 10

