



88th AYC Annual Regatta

July 27-28, 2024

CBYRA SANCTION #311 & 312

Organizing Authority: Annapolis Yacht Club
Annapolis, Maryland, USA

<http://www.annapolisyc.com/racing/regattas>

SAILING INSTRUCTIONS

The notation '[NP]' in a rule of the SIs or NoR means that a boat may not protest another boat for breaking that rule. This changes RRS 60.1(a).

1 RULES

- 1.1 The regatta will be governed by the rules as defined in The Racing Rules of Sailing (RRS).
- 1.2 For ORC Open and ORC Performance Cruiser only the "Nearshore" category of the US Sailing Safety Equipment Requirements (<https://www.ussailing.org/competition/offshore/safety-information/ser-world-sailing-special-regulations>) will apply.
- 1.3 ORC Open and ORC Performance Cruiser class rules are modified by ORC of the Chesapeake and can be found at <https://orcches.org/>
- 1.4 J/105 Class Rules are modified by Article IX of the local J-105 Fleet-3 Article/Rules. This event is designated a Level 1A event. J/105 Fleet-3 Articles/Rules can be found at <https://www.j105fleet3.org/rules>

2 CHANGES TO SAILING INSTRUCTIONS

- 2.1 Any change to the sailing instructions (SIs) will be posted no later than 2 hours before the first scheduled warning signal on the day it will take effect, except that any change to the schedule of races will be posted by 2000 on the day before it will take effect.

3 COMMUNICATIONS

- 3.1 Notices to competitors will be posted on the official notice board which is electronic and located at: <https://yachtscoring.com/emenu.cfm?eid=16353>
- 3.2 The race office can be reached by telephone at 410-858-4964 or by email at raceoffice@annapolisyc.org. Forms can be found online at <https://annapolisyc.com/racing/raceoffice>.
- 3.3 On the water, the race committee intends to monitor and communicate with competitors via VHF radio on channel 72 for the Bay Courses and channel 73 for the River Course. This includes announcements and confirmation of race committee signals before, during, and after racing.
- 3.4 For the Government mark race on Saturday, the race committee will post the course to be sailed on the official notice board and also share via email.

4 CODE OF CONDUCT

- 4.1 [DP] Competitors and support persons shall comply with reasonable requests from race officials.

5 SIGNALS MADE ASHORE

- 5.1 Signals flown ashore will be flown from flagpole at the AYC Clubhouse.
- 5.2 When flag AP is displayed ashore, the approximate time of the next warning signal will be posted on the notice board before it is removed. This changes RRS Race Signals.

6 SCHEDULE OF RACES

- 6.1 Racing dates are as follows:
 - (a) Saturday, (Bay Course): ORC Open, ORC Performance Cruiser, and J/105
 - (b) Sunday, (Bay Course): Alberg 30, J/22, Cal 25, J/30, J/70, J/80, and Viper 640
 - (c) Sunday, (River Course): Harbor 20
- 6.2 The warning signal for the first race of the regatta is scheduled for 1000 for ORC Performance Cruiser class on Saturday, July 27. The warning signal for all other classes will be at 1100 on both Saturday and Sunday.

6.3 Two drop mark races are scheduled for ORC Open and up to four drop mark races are scheduled for the J/105s on Saturday only. The ORC Performance Cruiser class will sail one Government mark race on Saturday. Three drop mark races are scheduled for all classes sailing on Sunday.

6.4 No warning signal will be made after 1530.

7 CLASS FLAGS

7.1 There will be no class flags required.

7.2 The starting sequence for the first race of the day and Warning Signal flags will be posted by 1300 July 26.

8 RACING AREA

8.1 The racing area will be in the Severn River and Chesapeake Bay off the mouth of the Severn River as shown in SI Attachment 1.

8.2 Approximately 60 minutes prior to the first scheduled warning signal of the day, the race committee will announce the approximate location of the starting area on VHF radio.

8.3 Approximately 30 minutes prior to the first scheduled warning signal of the day, the race committee will announce the location of the race committee signal vessel.

9 THE COURSES

9.1 The ORC Open and J105 classes (Saturday) and all classes sailing on Sunday will use drop-mark courses as shown in SI Attachment 2. Two windward marks may be laid which will be differentiated on the course board by distance to the windward mark for specific classes.

9.2 The ORC Performance Cruiser class will use Government marks as shown in SI Attachment 3

9.3 Prior to the warning signal, the race committee signal vessel will announce on VHF radio the course to be sailed. For drop mark races, this will include the approximate distance between the leeward and windward marks, and the approximate compass bearing of the first leg of the course. For Government marks races, this will include the rounding and passing marks and required side.

9.4 Prior to the warning signal, the race committee signal vessel may announce on VHF radio that the first mark will be a change mark (see SI 10).

10 MARKS

10.1 FOR SATURDAY AND SUNDAY BAY COURSE (Drop Marks Courses):

(a) The starting mark will be either a green inflatable or Marksetbot.

(b) The finishing mark will be a green inflatable.

(c) Marks 1, 2s, 2p will be orange inflatables or Marksetbots.

(d) Mark 1a will be a green inflatable.

(e) Change marks used in accordance with SI 13 will be orange with black band, or yellow inflatables.

(f) When the first mark of the course is to be a change mark, the race committee signal vessel will display flag "C" prior to the warning signal and make one long sound signal. See SI 13.

10.2 FOR SUNDAY RIVER COURSE:

(a) The start and finishing marks will be an orange inflatable.

(b) Mark 1 and 1a will be yellow inflatables.

(c) Marks 2s and 2p will be orange inflatables.

(d) Change marks used in accordance with SI 13 will be short yellow cylinders with a dark colored band.

10.3 For SATURDAY GOVERNMENT MARKS COURSE:

(a) The rounding marks will use CBYRA Region III Standard Race Marks as described SI Attachment 3.

(b) The finishing mark will be a pink inflatable.

(c) Government marks "1AH" (off Tolly Point), R"4" (off Greenbury Point), Thomas Point Light and the Bloody Point Warning Light (LLNR 7751) shall be passed on the channel side at all times.

11 THE START

11.1 Approximately 120 minutes before the warning signal, the race committee will post the starting order for the first race of the day on the notice board.

11.2 For the Bay Courses, races will be started using RRS 26. For the River Course, races will be started using RRS/US Appendix U, Audible-Signal Racing System, with all hails being made by VHF radio.

- 11.3 Prior to the warning signal, the race committee will announce the next class to start on VHF radio.
- 11.4 The starting line will be between the staff displaying an orange flag on the race committee signal vessel at the starboard end, and either the course side of the starting mark or the staff displaying an orange flag on the race committee vessel at the port end.
- 11.5 [DP] Boats whose warning signal has not been made shall avoid the starting area during the starting sequence for other classes.
- 11.6 A boat that does not start within 10 minutes after her starting signal will be scored Did Not Start without a hearing. This changes RRS A4 and A5.

12 RECALLS

- 12.1 The race committee will announce on VHF radio boats identified as OCS, UFD, or BFD. A boat may not base a request for redress on the failure to hear or receive the announcements, the timeliness of announcement or the order in which boats are announced. This changes RRS 62.1(a).

13 CHANGE OF THE NEXT LEG OF THE COURSE

- 13.1 To change the next leg of the course, the race committee will lay a new mark (or move the finish line) and remove the original mark as soon as practicable. There will be no offset marks for change marks. When in a subsequent change a new mark is replaced, it will be replaced by an original mark.
- 13.2 After a start, if flag C is flown over flag Q, then the course change applies only to boats beginning their final leg to the finish. This changes RRS 33(c).

14 THE FINISH

- 14.1 The finishing line will be between a staff displaying a blue flag on the race committee finishing vessel and the course side of the finishing mark. For the Bay Course, including the ORC Performance Cruiser class, the finishing mark will be on the OPPOSITE side of the signal boat as the starting line. Note that the finish for the ORC Performance Cruiser class will be in the same location as the start. For the River Course, the finishing mark will be the same as the starting mark.

15 PENALTY SYSTEM

- 15.1 Penalties while racing: RRS 44.1 is changed so that the Two Turns Penalty is replaced by the One-Turn Penalty.

16 TIME LIMITS

- 16.1 The Mark 1 Time Limits, Race Time Limits, and Finishing Windows are (in minutes):

Class, Race	Mark 1 Time Limit	Race Time Limit	Finishing Window
All Sunday classes	30	90	15
J/105 (Saturday)	30	120	15
ORC Open (Saturday)	30	120	None
ORC Performance Cruiser	120	240	None

- 16.2 If no boat has passed the first mark within the Mark 1 Time Limit, the race will be abandoned.
- 16.3 The Race Time Limit is the time limit for the first boat in each class to sail the course and finish. If no boat finishes within the Race Time Limit, the race will be abandoned.
- 16.4 The Finishing Window is the time for boats to finish after the first boat sails the course and finishes. Boats failing to finish within the Finishing Window, and not subsequently retiring, penalized or given redress, will be scored Time Limit Expired (TLE) without a hearing. This changes RRS 35, A4, A5 and A11.

17 PROTESTS, REQUESTS FOR REDRESS, SCORING INQUIRIES

- 17.1 Protest forms, scoring inquiry forms, and penalty acceptance forms shall be delivered to the race office by email (see SI 3.2).
- 17.2 Protests, requests for redress or reopening shall be delivered to the race office by email by the protest time limit.
- 17.3 The protest time limit is 60 minutes after the race committee signal vessel docks. The race committee will post the protest time limit.

- 17.4 As soon as practicable after a protest is filed, the protest committee will post a notice to inform competitors of the schedule and location of hearings in which they are parties or named as witnesses.
- 17.5 When the race committee receives a scoring inquiry form, it will review its records and respond as soon as practicable.
- 17.6 The race committee will post a list of race committee scoring actions no later than the protest time limit.
- 17.7 Notices of protests by the race committee or protest committee will be posted to inform boats under RRS 61.1(b).

18 SCORING

- 18.1 RRS Appendix A4, Low Point System, will apply.
- 18.2 One race is required to be completed to constitute a series.
- 18.3 A boat's series score will be the total of her race scores.
- 18.4 Corrected times for the ORC classes will be calculated using ORC Time-on-Time ratings. The race committee will determine the proper course type and the wind speed rating prior to scoring the race. A boat may not base a request for redress on the race committee's decision of course type or wind speed band. This changes RRS 60.1.
- 18.5 Boats to be scored TLE will be scored points equal to the number of boats finishing within the finishing window plus two points by the race committee without a hearing but no worse than the number of entries. This changes RRS A4.2 and A5.

19 SAFETY REGULATIONS

- 19.1 [DP] A boat that retires from a race, or leaves the racing area between races, shall notify the race office (see SI 3) at the first reasonable opportunity.
- 19.2 [NP] [DP] A boat shall not exercise right of way, cross in proximity to, or interfere with reasonable transit of the race area by commercial ships, tugs, or barges. Boats must take evasive action well in advance of a potentially dangerous situation. The US Coast Guard, ship captains, and bay pilots have been encouraged to report any incident they observe.
- 19.3 A boat without way may use any means of propulsion to avoid commercial traffic that is under way provided: (a) the boat does not gain an advantage; (b) use of the propulsion is the boat's only means of avoiding the commercial traffic; and (c) the boat submits a report to the race office (in writing or by e-mail to raceoffice@annapolisyc.org) by the protest filing deadline describing the incident and the boat's actions.
- 19.4 The race committee or protest committee may protest a boat for SI 19.2 based on information received from any source. A written statement from the US Coast Guard, a ship captain, or a bay pilot will be accepted as evidence without the author present. The protest time limit does not apply. This changes RRS 60.2, 60.3, 61.3, and 63.6.

20 INSURANCE

- 20.1 Each participating boat shall be insured with valid third-party liability insurance with a minimum cover of \$300,000 combined single limit. Competitors are solely responsible for obtaining the required coverage.

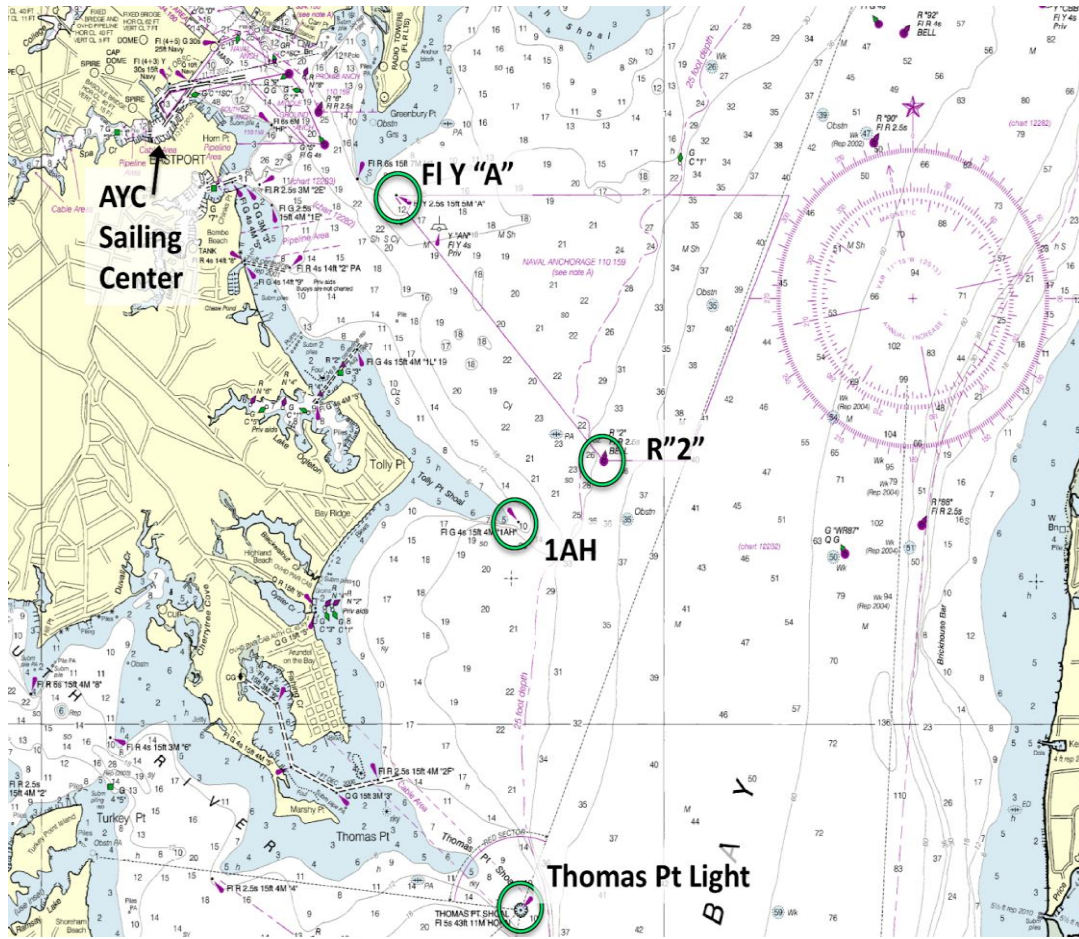
21 DISCLAIMER OF LIABILITY

- 21.1 Competitors participate in the regatta entirely at their own risk. RRS 3 states: 'The responsibility for a boat's decision to participate in a race or to continue *racing* is hers alone.' By participating in this event each competitor agrees and acknowledges that sailing is a potentially dangerous activity with inherent risks, which are assumed by the competitor

22 FURTHER INFORMATION

- 22.1 For more information contact: AYC Harborside Director: Linda Ambrose, lambrose@annapolisyc.org, 410.858.4964

SI ATTACHMENT 1 - RACE AREA FOR DROP MARKS RACES

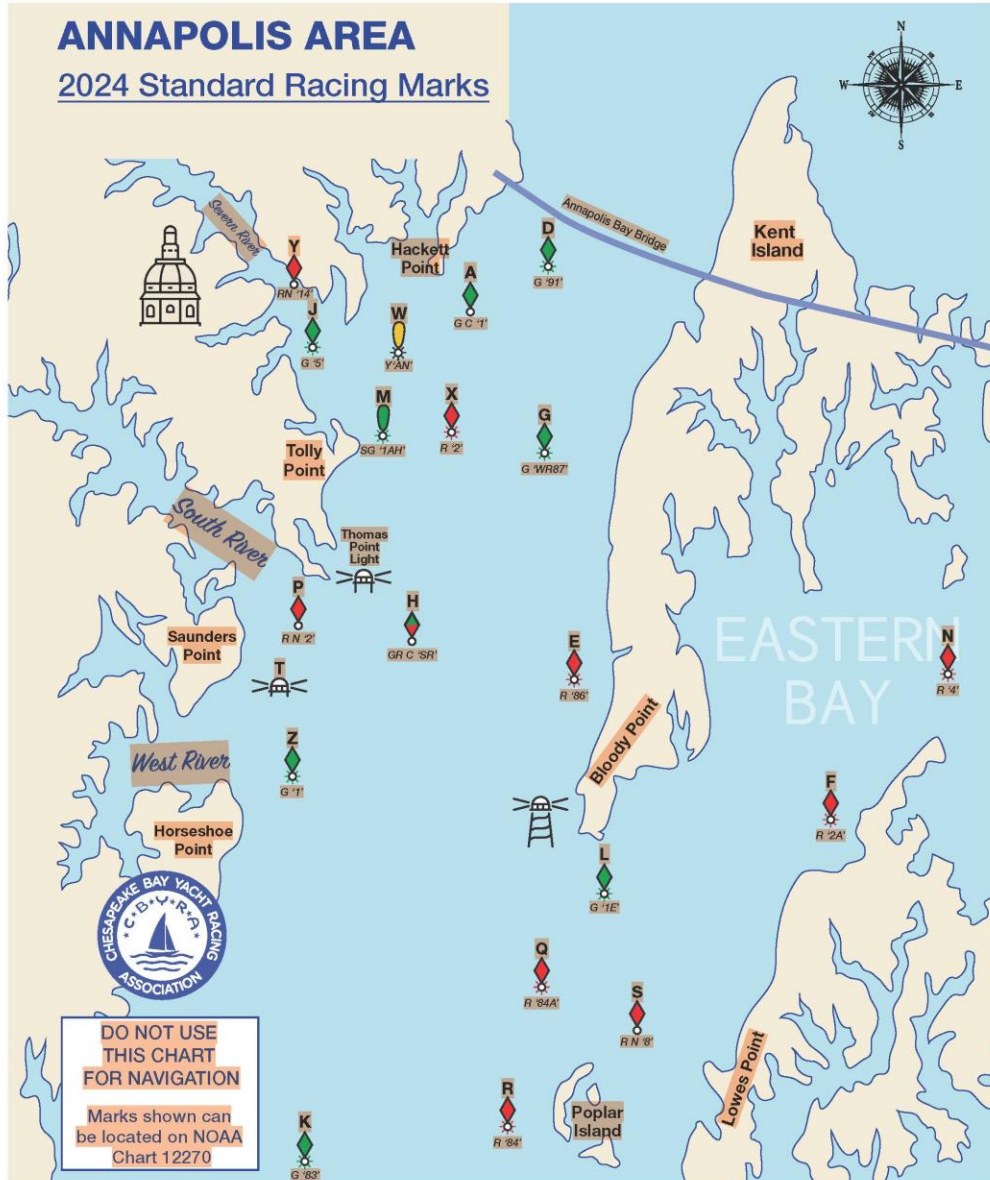


SI ATTACHMENT 2 - DROP MARKS COURSES

In the below table, the course designation is followed by the mark rounding order for that course. All marks except 2S are to be rounded to port. If the race committee announces on VHF radio that a gate will not be used, then mark 2S will not be set. The marks are described in SI 10. The starting line is described in SI 11. The finishing line is described in SI 14.

<div style="font-size: 2em; font-weight: bold; margin-bottom: 10px;">LA</div> <p>LA2: Start-1-1a-2s/2p-1-1a-Finish LA3: Start-1-1a-2s/2p-1-1a-2s/2p-1-1a-Finish</p>	<div style="font-size: 2em; font-weight: bold; margin-bottom: 10px;">WA</div> <p>WA2: Start-1-1a-2s/2p-Finish WA3: Start-1-1a-2s/2p-1-1a-2s/2p-Finish</p>
<div style="font-size: 2em; font-weight: bold; margin-bottom: 10px;">L</div> <p>L2: Start-1-2s/2p-1-Finish L3: Start-1-2s/2p-1-2s/2p-1-Finish</p>	<div style="font-size: 2em; font-weight: bold; margin-bottom: 10px;">W</div> <p>W2: Start-1-2s/2p-Finish W3: Start-1-2s/2p-1-2s/2p-Finish</p>

SI ATTACHMENT 3 - GOVERNMENT MARKS COURSE MARKS



Standard Passing Marks: The following navigational aids rank as passing marks and shall be passed on the channel side at all times: Tolly Point Dolphin ("1AH"), Thomas Point Shoal Light; Bloody Point Warning Light.

Approximate positions of all marks are offered as a reference only. Government symbols and/or numbers may be changed. All changes are published in Notice to Mariners. Description and location of bouys have been updated through 12/07/2021.

Annapolis Area – 2024 Standard Racing Marks

Mark	Govt. ID	Characteristics	Location	Lat 38 N	Lon 76 W
A	GC "1"		Hacket Point Shoal Buoy 1	58.20	24.87
D	G "91"	FI G 4s	Chesapeake Channel - Lighted Buoy 91	58.99	23.11
E	R "86"	FI R 4s	Chesapeake Channel - Lighted Buoy 86	51.97	23.55
F	R "2A"	FI R 4s	Eastern Bay - Entrance Lighted Buoy 2A	50.56	18.22
G	G "WR87"	Q G	Chesapeake Channel - Lighted Buoy WR87	55.97	23.55
H	GR C "SR"		South River - Junction Buoy SR	53.66	25.87
J	G "5"	FI G 4s	Severn River - Lighted Buoy 5	58.30	27.72
K	G "83"	FI G 4s	Chesapeake Channel - Lighted Buoy 83	45.13	26.66
L	G "1E"	FI G 4s	Eastern Bay - Entrance Lighted Buoy 1E	49.12	22.13
M	SG "1AH"	FI G 4s	Severn River - Light 1AH	56.15	26.17
N	R "4"	FI R 4s	Eastern Bay - Entrance Lighted Buoy 4	52.59	15.08
P	RN "2"		South River - Entrance Buoy 2	53.74	27.87
Q	R "84A"	FI R 2.5s	Chesapeake Channel - Lighted Buoy 84A	47.59	24.69
R	R "84"	FI R 4s	Chesapeake Channel - Lighted Buoy 84	45.46	25.11
S	RN "8"		Eastern Bay Poplar Is. Narrows - Buoy 8	47.12	20.88
T	Fixed	FI (2+1)R 6s	West River - Saunders Point Shoal Junction Light	53.03	28.62
U	RC Choice	Inflatable Drop	May be set by RC at Starting Line		
V	RC Choice	Inflatable Drop	May be set by RC as 1		
W	Y "AN"	FI Y 4s	Severn River - NOAA Lighted Buoy AN	57.82	26.81
X	R "2"	FI R 2.5s	Severn River - Lighted Buoy 2	56.50	25.48
Y	RN "14"		Severn River - Buoy 14	59.15	28.67
Z	G "1"	FI G 4s	West River - Lighted Buoy 1	51.85	26.99

Distance Between Marks

Use the table below to determine the distance in nautical miles between marks. If a distance is not shown, the course between those marks most likely crosses land and/or a shoal and should not be used.

	D	E	G	H	J	K	L	M	N	P	Q	R	S	T	X	Z
A	1.58	6.32	2.46	4.61	2.22	13.15	9.33	2.29		5.04	10.62	12.75	11.51	5.94	1.77	6.57
D		7.03	3.04	5.75	3.65	14.14	9.91	3.71		6.43	11.47	13.63	12.00	7.35	3.10	7.76
E			4.00	2.48	7.12	7.26	3.06	4.65		3.80	4.47	6.63	5.28	4.09	4.78	2.68
F						8.54	3.37		3.18		5.85	7.41	4.02			
G				2.93	4.00	11.11	6.94	2.05		4.04	8.43	10.59	9.10	4.92	1.59	4.92
H					4.86	8.56	5.40	2.50		1.56	6.14	8.23	7.61	2.23	2.86	2.01
J						13.20	10.17	2.47		4.56	10.97	13.01	12.39	5.32	2.51	6.48
K							5.33	11.03		8.67	2.90	1.25	4.93	8.05	11.41	6.73
L								7.71	6.50	6.43	2.52	4.34	2.23	6.39	7.83	4.67
M										2.75	8.64	10.73	9.93	3.66	0.64	4.35
N											9.01	10.59	7.10			
P											6.63	8.56	8.58	0.92	3.33	2.01
Q												2.16	3.01	6.25	8.94	4.62
R													3.69	8.05	11.05	6.56
S														8.45	10.05	6.72
T															4.25	1.73
X																4.80