

# 2024 HARBOR 20 EAST-WEST CHALLENGE

September 6-8, 2024

<https://www.annapolisyc.com/racing/regattas>



Annapolis Yacht Club and Harbor 20 Fleet 5 are the  
Organizing Authority (OA)



## SAILING INSTRUCTIONS including Amendments No. 1 & 2

The notation '[NP]' in a rule of the NoR or SIs means that a boat may not protest another boat for breaking that rule. This changes RRS 60.1(a).

### 1 RULES

- 1.1 The regatta will be governed by the *rules* as defined in *The Racing Rules of Sailing* (RRS).
- 1.2 While reasonable steps were taken to equalize the boats, variations will not be grounds for redress. This changes rule 62.1 (a).
- 1.3 **[DP] SI Attachment 3, Rules for Handling Boats and Breakdown Requirements, at all times while aboard the Boats.**

### 2 CHANGES TO SAILING INSTRUCTIONS

- 2.1 Any change to the sailing instructions will be posted before 0900 on the day it will take effect, except that any change to the schedule of races will be posted by 2000 on the day before it will take effect.

### 3 COMMUNICATIONS WITH COMPETITORS

- 3.1 Notices to competitors will be posted on the official notice board which is electronic and located at: <https://yachtscoring.com/emenu.cfm?eid=16356>
- 3.2 The race office can be reached by email at [raceoffice@annapolisyc.org](mailto:raceoffice@annapolisyc.org) 410-858-4964. Forms can be found online at <https://www.annapolisyc.com/racing/raceoffice>.
- 3.3 On the water, the race committee intends to monitor and communicate with competitors via VHF radio on channel 71. This includes announcements and confirmation of race committee signals before, during, and after racing.
- 3.4 [DP] While racing, except in an emergency, a boat shall not make voice or data transmissions and shall not receive voice or data communication that is not available to all boats.

### 4 CODE OF CONDUCT

- 4.1 [DP] Competitors and support persons shall comply with reasonable requests from race officials.

### 5 SIGNALS MADE ASHORE

- 5.1 Signals flown ashore will be flown from the flagpole at AYC Clubhouse.
- 5.2 When flag AP is displayed ashore, the approximate time of the next warning signal will be posted on the official notice board and announced to all competitors before it is removed. This changes Race Signals.

## 6 SCHEDULE OF RACES

### 6.1

DAY 1 Friday Sept. 6	1000-1200 1300 1430 1730 1800	On-site Registration, Boat Launching at AYC Sailing Center Welcome and Boat Draw at AYC Sailing Center Warning for Practice Race Competitors Briefing at AYC Sailing Center Reception and Dinner at AYC Sailing Center
DAY 2 Saturday Sept. 7	0915 1100 1800	Competitors Briefing AYC Sailing Center First Warning (multiple races scheduled) Cocktails & Dinner - Offsite
DAY 3 Sunday Sept. 8	0915 1100 1530 After Racing	Competitors Briefing AYC Sailing Center First Warning Signal (multiple races scheduled) No Warning After Awards Party & Trophy Presentation at AYC Sailing Center

6.2 Eight (8) races are scheduled.

6.3 There will be no warning signal after 1530 on the last day of the regatta.

## 7 CLASS FLAG

7.1 Boats shall display on the backstay, at least 5 feet above the deck, the team identification streamer supplied by the Organizing Authority.

7.2 Boats will not be required to fly a Class Flag.

## 8 RACING AREA

8.1 The racing area will be in the Chesapeake Bay off the mouth of the Severn River as shown in SI Attachment 1.

## 9 COURSES

9.1 The courses are described in SI Attachment 2.

9.2 Prior to the warning signal, the race committee signal vessel will post on a placard the course to be sailed and will announce on VHF radio the course, the approximate distance between the race committee signal boat and the windward marks, and the approximate compass bearing of the first leg of the course.

## 10 MARKS

10.1 Starting marks and finishing marks will be lime green cylinders or green Marksetbots. All other marks of the course will be orange cylinders, including mark 1a. New marks used in accordance with SI 12 will be yellow inflatables.

## 11 THE START

11.1 Races will be started using RRS 26.

- 11.2 Each boat shall check in with the signal boat prior to their first warning signal each day by sailing astern of the signal boat and hailing their sail number until acknowledged by the race committee.
- 11.2 The warning signal will be the Harbor 20 Class Flag.
- 11.3 The starting line is between a staff displaying an orange flag on the starting vessel and the course side of the pin end starting mark.
- 11.4 The race committee will attempt to announce on VHF radio boats identified as OCS. A boat may not base a request for redress on the failure to hear or receive the announcements, the timeliness of announcement or the order in which boats are announced. This changes RRS 62.1(a).
- 11.5 A boat that does not start within 5 minutes after her starting signal will be scored Did Not Start without a hearing. This changes RRS A5.1 and A5.2.

## 12 CHANGE OF THE NEXT LEG OF THE COURSE

- 12.1 To change the next leg of the course, the race committee will lay a new mark (or move the finishing line) and remove the original mark as soon as practicable. When in a subsequent change a new mark is replaced, it will be replaced by an original mark.

## 13 THE FINISH

- 13.1 The finishing line is between a staff displaying a blue flag on the finishing vessel and the course side of the finishing mark.
- 13.2 For downwind finishes on Course LA, the finishing line will be on the *same* side of the race committee as the starting line.

## 14 PENALTY SYSTEM

- 14.1 Penalties while racing: RRS/US Appendix V1, Penalty at the time of the incident, will apply.
- 14.2 Penalties after racing: RRS/US Appendix V2, Penalty Taken After the Race, will apply.

## 15 TIME LIMITS

- 15.1 The Mark 1 Time Limit will be 30 minutes. If no boat has passed the first mark within the Mark 1 Time Limit, the race will be abandoned.
- 15.2 The Race Time Limit (see RRS 35) will be 90 minutes.
- 15.3 The Finishing Window will be 15 minutes. The Finishing Window is the time for boats to finish after the first boat in a class sails the course and finishes. Boats failing to finish within the Finishing Window, and not subsequently retiring, penalized or given redress, will be scored Time Limit Expired (TLE) without a hearing.

## 16 HEARING REQUESTS

- 16.1 The protest time limit is 60 minutes after the race committee signal boat docks. The time will be posted on the official notice board.
- 16.2 Hearing request forms, scoring inquiry forms, and penalty acceptance forms can be found online at <https://www.annapolisyc.com/racing/raceoffice>.
- 16.3 Scoring Inquiries and Penalty Acceptance forms shall be filed by email with the Race Office (see SI 3.2).
- 16.4 Hearing requests shall be filed by email with the Race Office or delivered to the Protest Desk on the 3rd floor of the AYC Sailing Center by the protest time limit. See RRS 61.3
- 16.5 When the race committee receives a scoring inquiry form, it will review its records and respond as soon as practicable.
- 16.6 The protest committee will post a notice to inform competitors of the schedule and location of hearings in which they are parties or named as witnesses.
- 16.7 The race committee will post a list of race committee scoring actions no later than the protest time limit.
- 16.8 RRS 62.2(a) and 66.2(a) do not apply.

## 17 SCORING

- 17.1 The scoring system is the Low Point System in RRS Appendix A, except that each boat team series score will be the sum of her scores for all races.
- 17.2 Two (2) races are required to be completed to constitute a regatta.
- 17.3 A boat scored TLE shall be scored points for the finishing place two (2) more than the points scored by the last boat that finished within the Finishing Window. This changes RRS 35, A5.1, A5.2 and A10.

## **18 [DP] SAFETY REGULATIONS**

- 18.1 A boat that retires from a race shall notify the race committee or race office (see SI 3) at the first reasonable opportunity.
- 18.2 A boat without way may use any means of propulsion to avoid commercial traffic that is under way provided: (a) the boat does not gain an advantage; (b) using the propulsion is the boat's only means of avoiding the commercial traffic; and (c) the boat submits a report (in writing or by e-mail) with the event's race office (see SI 3) by the protest filing deadline describing the incident and the boat's actions.
- 18.3 A boat shall not exercise right of way, cross in proximity to, or interfere with reasonable transit of the race area by commercial ships, tugs, or barges. Boats must take evasive action well in advance of a potentially dangerous situation. The US Coast Guard, ship captains, and bay pilots have been encouraged to report any incident they observe.
- 18.4 The race committee or protest committee may protest a boat for breaking SI 18.2 or 18.3 based on information received from any source. The protest time limit does not apply. This changes RRS 60.2, 60.3, and 61.3.

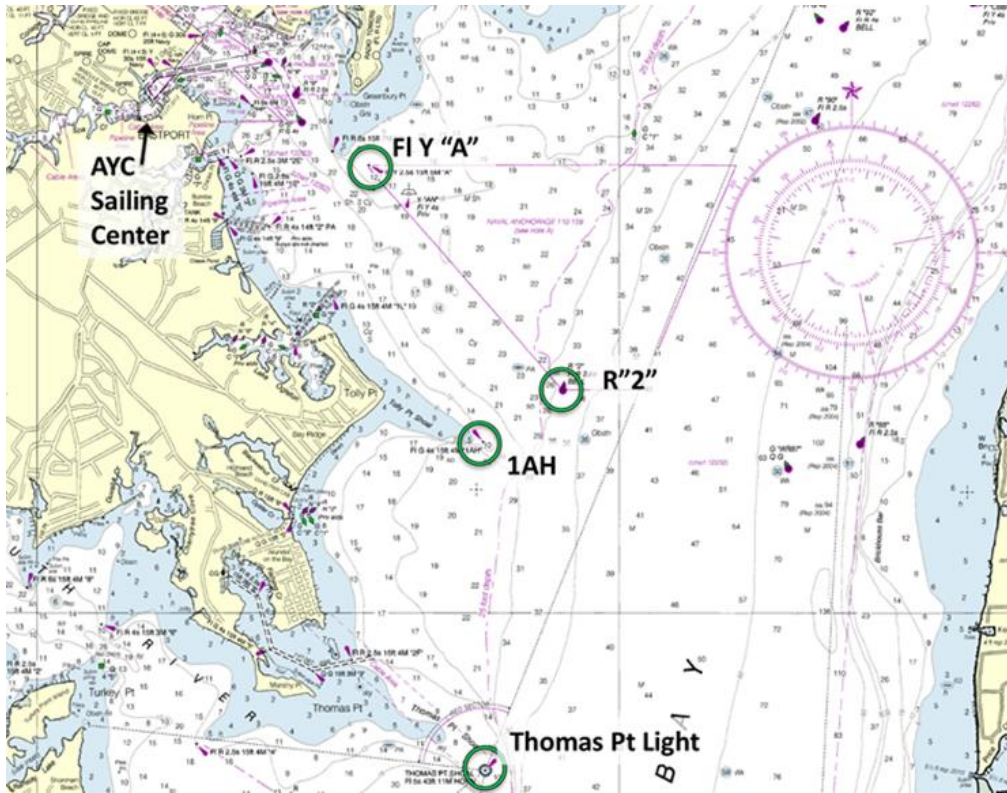
## **19 DISCLAIMER OF LIABILITY**

- 9.1 Competitors participate in the regatta entirely at their own risk. RRS 3 states: 'The responsibility for a boat's decision to participate in a race or to continue *racing* is hers alone.' By participating in this event competitor agrees and acknowledges that sailing is a potentially dangerous activity with inherent risks, which are assumed by the competitor.

## **20 PRIZES**

- 20.1 The Harbor 20 Cup East Coast/West Coast Challenge Trophy will be awarded to the top finisher.
- 20.2 Trophies will be awarded to the top three overall individual finishers.
- 20.3 Additional prizes may be awarded at the discretion of the Organizing Authority.

## SI ATTACHMENT 1 - RACE AREA FOR DROP MARKS RACES



## SI ATTACHMENT 2 - DROP MARKS COURSES

In the below table, the course designation is followed by the mark rounding order for that course. All marks except 2S are to be rounded to port. If the race committee announces on VHF radio that a gate will not be used, then mark 2S will not be set. The marks are described in SI 10. The starting line is described in SI 11. The finishing line is described in SI 13.

<p><b>LA</b></p> <p>LA2: Start-1-1a-2s/2p-1-1a-Finish            LA3: Start-1-1a-2s/2p-1-1a-2s/2p-1-1a-Finish</p>	<p><b>WA</b></p> <p>WA2: Start-1-1a-2s/2p-Finish            WA3: Start-1-1a-2s/2p-1-1a-2s/2p-Finish</p>
---	---

## SI ATTACHMENT 3 - Rules for Handling Boats and Breakdown Requirements

1. Competitors will use the boats provided and may not make any modifications including adjustments of standing rigging without approval of the Organizing Authority.
2. All equipment supplied on a boat shall be carried on the boat.
3. An Owner's Representative (Rep) will be assigned to each boat to be aboard while racing. In case of an emergency, the Rep may take the helm and otherwise issue commands that the teams shall attempt to obey. Except in an emergency, a Rep shall be an observer and not participate in tactics, sail or boat handling.
4. Before racing each boat team shall inspect the boat and bring to the attention of the race committee any reasonably visible defects in the boat and its rigging that may require repair or replacement to avoid failure during the race.
5. Boats shall report all damage or loss of equipment, however slight, to the race committee as soon as practical by hailing the race committee on the event VHF channel.
6. Before the warning signal, or within two minutes of finishing or within five minutes of changing into a new boat, whichever is later, a boat may contact the race committee on the event VHF channel to report a breakdown or damage to the boat, the sails or injury to the crew and request a delay to the next start. The boat shall proceed as soon as possible to a position on the starboard side of the race committee signal vessel, furl their jib, and remain there unless otherwise directed.
7. After the warning signal a race will not be postponed or abandoned due to breakdown unless the race committee was informed of the breakdown as required in paragraph 6 above.
8. A boat may receive assistance from the bosun between races for repairs due to equipment failure or collision. The Rep or bosun may determine that a boat cannot continue racing and the boat team will be reassigned to another boat, if available.
9. If a boat team is assigned a new boat due to a breakdown the boat team's scores from the original boat transfers to the new boat.
10. The time allowed for repairs will be at the discretion of the race committee.
11. Except when RRS 62.1 (b) applies, failure to effect repairs in the time allowed or breakdowns after the warning signal shall not be grounds for redress unless the breakdown was caused by failure of equipment that would not have been reasonably observable to the boat team prior to the failure. This changes RRS 62.

## SI ATTACHMENT 4 - Boat Assignments and Rotation

- No East boat team may sail in the boat they own.
- Boat teams in the East or West may not sail in the same boat more than once. If their own boat or a repeat boat is drawn, that boat team will exchange the boat drawn with the boat immediately above in the order of competitors on their team determined in draw number one. If the repeat or duplicate boat is drawn by the first boat team on the list, they will replace the ball in draw bag and draw a different boat.