	<p>84th AYC Fall Series Sept 28-29, Oct 5-6, 2024 Organizing Authority: Annapolis Yacht Club Annapolis, Maryland, USA http://www.annapolisyc.com/racing/regattas</p>	
	<p>SAILING INSTRUCTIONS including Amendment No. 1</p>	
<p><i>The notation '[NP]' in a rule of the SIs or NoR means that a boat may not protest another boat for breaking that rule. This changes RRS 60.1(a).</i></p>		

1 RULES

- 1.1 The regatta will be governed by the rules as defined in *The Racing Rules of Sailing* (RRS).
- 1.2 For boats in ORC Open and ORC Performance Cruiser only, the “Nearshore” category of the US Sailing Safety Equipment Requirements (available at <https://www.ussailing.org/competition/offshore/safety-information/ser-world-sailing-special-regulations>) will apply.
- 1.3 ORC Open and ORC Performance Cruiser class rules are modified by ORC of the Chesapeake and can be found at <https://orcches.org/>
- 1.4 J/105 Class Rules are modified by Article IX of the local J-105 Fleet-3 Article/Rules. This event is designated a Level 1A event. J/105 Fleet-3 Articles/Rules can be found at <https://www.j105fleet3.org/rules>

2 CHANGES TO SAILING INSTRUCTIONS

- 2.1 Any change to the sailing instructions (SIs) will be posted no later than 2 hours before the first scheduled warning signal on the day it will take effect, except that any change to the schedule of races will be posted by 2000 on the day before it will take effect.

3 COMMUNICATIONS

- 3.1 Notices to competitors will be posted on the official notice board which is electronic and located at: <https://yachtscoring.com/emenue.cfm?eid=15662>
- 3.2 The race office can be reached by telephone at 410-858-4964 or by email at raceoffice@annapolisyc.org. Forms can be found online at <https://www.annapolisyc.com/racing/raceoffice>.
- 3.3 On the water, the race committee intends to monitor and communicate with competitors via VHF radio on channel 71 for the Bay Courses and Channel 73 for the River Course. This includes announcements and confirmation of race committee signals before, during, and after racing.
- 3.4 For the Government Mark race on Sunday October 6, the race committee will post the course to be sailed on the official notice board and inform competitors via email.

4 CODE OF CONDUCT

- 4.1 [DP] Competitors and support persons shall comply with reasonable requests from race officials.

5 SIGNALS MADE ASHORE

- 5.1 Signals flown ashore will be flown from flagpole at the AYC Clubhouse.
- 5.2 When flag AP is displayed ashore, the approximate time of the next warning signal will be posted on the notice board and announced to all competitors before it is removed. This changes RRS Race Signals.

6 6 SCHEDULE OF RACES

6.2 and 6.3 are amended as follows:

6.1 The scheduled time of the Warning Signal for the first race of the day is 1100.

6.2 For Fall Series 1 on Sept 28 - Sept 29:

(a) Classes racing: CAL-25 (Fri, Sat and Sun - see separate Sailing Instructions), J/22 (Sat Only), J/30, J/70, J/80, Stars, and Viper 640.

(1) 5 races using drop mark courses are scheduled for J/70, J/80, Star and Viper classes.

(2) 3 races using drop mark courses are scheduled for J/22.

(3) A maximum of 3 races per day will be sailed.

(4) No warning signal will be made after 1530 on

Sunday

6.3 For Fall Series 2 on October 5 - 6:

(a) Classes racing: Harbor 20, J/105, ORC Open and ORC Performance Cruiser

(b) For the River Course (Saturday Only)

(1) 3 races using government marks are scheduled for the Harbor 20 class. No warning signal will be made after 1530.

(c) For the Bay Circle:

(1) 3 races using drop mark courses on Saturday and Sunday are scheduled for the J/105 class.

(2) 2 races using drop mark courses on Saturday are scheduled for the ORC Open class.

(3) 1 race using a government mark course is scheduled on Sunday for the ORC Open and ORC Performance Cruiser classes. The government mark race will be weighted at 1.25 for scoring purposes.

(4) The warning signal for the first race is scheduled for 1100 both Saturday and Sunday.

(5) No warning signal will be made after 1530 on Sunday.

7 CLASS FLAGS

7.1 There are no class flags required.

7.2 The starting sequence for the first race of the day and Warning Signal flags for Fall Series 1 will be posted by 1300 on September 27.

7.3 The starting sequence for the first race of the day and Warning Signal flags for Fall Series 2 will be posted by 1300 on October 4.

8 8 RACING AREA

8.1 and 8.2 are amended as follows:

8.1 For Fall Series 1, the racing area will be the Chesapeake Bay off the mouth of the Severn River for the Cal 25, J/22, J/30, J/70, J/80, Stars, and Viper 640 Classes.

8.2 For Fall Series 2, the racing area will be the Severn River east of the USNA for the Harbor 20 Class. The racing area will be the Chesapeake Bay off the mouth of the Severn River for the J/105, ORC Open, and ORC Performance Cruiser classes.

8.3 No later than 120 minutes prior to the first scheduled warning signal, the race committee will post the approximate intended location of the starting area on the notice board.

8.4 Approximately 60 minutes prior to the first scheduled warning signal, the race committee will announce the approximate location of the starting area on VHF radio.

9

10 THE COURSES

10.1 For drop marks races see SI Attachments 1 and 2. Two windward marks may be laid which will be differentiated on the course board for specific classes.

10.2 For the government mark races, see SI Attachments 3 and 4.

10.3 Prior to the warning signal, the course to be sailed will be posted on the official notice board and the race committee will announce the course to be sailed on VHF radio.

- (a) For government mark races, this will include the rounding and passing marks and the required side.
- (b) For drop mark races, the race committee signal boat will post on a placard the course designation, approximate distance between the signal boat and the windward mark, and the approximate compass bearing of the first leg of the course.

10.4 If the first mark of the course will be a change mark, prior to the warning signal the race committee signal boat will display a Charlie flag with one long sound signal and announce on VHF radio that the first mark will be a change mark (see SI 10.1(d) and SI 13.1).

11 MARKS

11.1 For all drop marks courses:

- (a) The starting mark will be either a green inflatable or a MarkSetBot.
- (b) The finishing mark will be a green inflatable.
- (c) Marks 1, 1a, 2s, and 2p will be orange inflatables or MarkSetBots.
- (d) Change marks used in accordance with SI 13 will be yellow inflatables.

11.2 For the **Fall Series 2** ORC Government marks race:

- (a) Both the starting and finishing lines will be at the race committee signal vessel.
- (b) The rounding marks will use CBYRA Region III Standard Race Marks as described SI Attachment 2.
- (c) Government marks “1AH” (off Tolly Point), R“4” (off Greenbury Point), Thomas Point Light, and the Bloody Point Bar Warning Light shall be passed on the channel side at all times.
- (d) The finish mark will be a pink inflatable.
- (e) The course will be posted on the notice board no later than 0800 on Sunday.

11.3 For **Fall Series 2** Harbor 20 Government marks race:

- (a) The course will be one of courses described in SI Attachment 4.
- (b) The course(s) will be announced on VHF radio prior to the warning signal.

12 THE START

12.1 Races will be started using RRS 26 for the Bay Course of Fall Series 1 and 2. The River Course for Fall Series 2 will use RRS/US Appendix U, Audible-Signal Racing System, with all hails being made by VHF radio.

12.2 Prior to the warning signal, the race committee will announce the next class to start on VHF radio.

12.3 The starting line will be between the staff displaying an orange flag on the race committee signal vessel and:

- (a) For the Fall Series 2 Harbor 20 government marks courses - the course side of Severn River G “9” Q G.
- (b) For all other courses - the course side of the starting mark.

12.4 [DP] Boats whose warning signal has not been made shall avoid the starting area during the starting sequence for other races.

12.5 A boat that does not start within 10 minutes after her starting signal will be scored Did Not Start without a hearing. This changes RRS A4 and A5.

13 RECALLS

13.1 The race committee will announce on VHF radio boats identified as OCS. A boat may not base a request for redress on the failure to hear or receive the announcements, the timeliness of announcement or the order in which boats are announced. This changes RRS 62.1(a).

14 CHANGE OF THE NEXT LEG OF THE COURSE

14.1 To change the next leg of the course, the race committee will lay a new mark (or move the finishing line) and remove the original mark as soon as practicable. There will be no offset marks for change marks. When in a subsequent change, a new mark is replaced, it will be replaced by an original mark.

14.2 After a start, if flag C is flown over flag Q, then the course change applies only to boats beginning their final leg to the finish. This changes RRS 33 and Race Signals.

15 THE FINISH

15.1 The finishing line will be between a staff displaying a blue flag on the race committee finishing vessel and the course side of the nearby finishing mark. For the Fall Series 1 and 2 Bay Circles, the finishing mark will be *on the opposite side* of the race committee signal vessel from the starting line. Note that the finish line

for the Government marks course for ORC Open and ORC Performance Cruiser classes will be in the same location as the start.

15.2 For Harbor 20 course, the finishing mark will be *on the same side* of the race committee signal vessel as the starting line.

16 PENALTY SYSTEM

16.1 Penalties while racing: RRS/US Appendix V1, Penalty at the Time of an Incident will apply.

16.2 Penalties after racing: RRS/US Appendix V2, Penalty Taken After the Race, will apply.

17 TIME LIMITS

17.1 The Mark 1 Time Limits, Race Time Limits, and Finishing Windows are (in minutes) for **Fall Series 1**:

Class, Race	Mark 1 Time Limit	Race Time Limit	Finishing Window
All classes	30	120	20

16.2 The Mark 1 Time Limits, Race Time Limits, and Finishing Windows are (in minutes) for **Fall Series 2**:

Class, Race	Mark 1 Time Limit	Race Time Limit	Finishing Window
Harbor 20	30	90	20
J/105	30	120	20
ORC Open (Saturday)	30	120	30
ORC Performance Cruiser and ORC Open (Sunday)	120	240	None

16.3 If no boat has passed the first mark within the Mark 1 Time Limit, the race will be abandoned.

16.4 The Race Time Limit is the time limit for the first boat in each class to sail the course and finish. If no boat finishes within the Race Time Limit, the race will be abandoned.

16.5 The Finishing Window is the time for boats to finish after the first boat sails the course and finishes. Boats failing to finish within the Finishing Window, and not subsequently retiring, penalized or given redress, will be scored Time Limit Expired (TLE) without a hearing. This changes RRS 35, A4, A5 and A11.

18 PROTESTS, REQUESTS FOR REDRESS, SCORING INQUIRIES

18.1 Protest forms, scoring inquiry forms, and penalty acceptance forms can be found online at <https://www.annapolisyc.com/racing/raceoffice>. They shall be delivered to the race office by email (see SI 3.2).

18.2 Protests, requests for redress or reopening shall be delivered to the race office via email by the protest time limit.

18.3 Protest time limit is 60 minutes after the race committee signal vessel docks. The race committee will post the protest time limit.

18.4 The race committee will post a list of race committee scoring actions no later than the protest time limit.

18.5 When the race committee receives a scoring inquiry form, it will review its records and respond as soon as practicable.

18.6 As soon as practicable after the protest time limit, the protest committee will post a notice to inform competitors of the schedule and location of hearings in which they are parties or named as witnesses.

18.7 Notices of protests by the race committee or protest committee will be posted to inform boats under RRS 61.1(b).

19 SCORING

19.1 RRS Appendix A4, Low Point System, will apply.

19.2 One race is required to be completed to constitute a series.

19.3 A boat's series score will be the total of her race scores.

19.4 Corrected times for ORC classes will be calculated using ORC Time-on-Time ratings. The race committee will determine the proper course type and the wind speed rating prior to scoring the race. A boat may not base a request for redress on the race committee's decision of course type or wind speed band. This changes RRS 60.1.

19.5 Boats to be scored TLE will be scored points equal to the number of boats finishing within the finishing window plus two points by the race committee without a hearing but no worse than the number of entries. This changes RRS A5.2 and A10.

20 [NP] SAFETY REGULATIONS

20.1 A boat that retires from a race, or leaves the racing area between races, shall notify the race committee or race office (see SI 3) at the first reasonable opportunity.

20.2 A boat shall not exercise right of way, cross in proximity to, or interfere with reasonable transit of the race area by commercial ships, tugs, or barges. Boats must take evasive action well in advance of a potentially dangerous situation. The US Coast Guard, ship captains, and bay pilots have been encouraged to report any incident they observe.

20.3 A boat without way may use any means of propulsion to avoid commercial traffic that is under way provided: (a) the boat does not gain an advantage; (b) use of the propulsion is the boat's only means of avoiding the commercial traffic; and (c) the boat submits a report to the race office (in writing or by e-mail to raceoffice@annapolisyc.org) by the protest filing deadline describing the incident and the boat's actions.

20.4 The race committee or protest committee may protest a boat for violation of SI 19.2 based on information received from any source. A written statement from the US Coast Guard, a ship captain, or a bay pilot will be accepted as evidence without the author present. The protest time limit does not apply. This changes RRS 60.2, 60.3, 61.3, and 63.6.

21 PRIZES

21.1 Prizes will be given in each class for 1st place with 3 or more starters (boats starting in at least one race), 2nd place with 6 or more starters, and 3rd place with 9 or more starters.

21.2 The OA anticipates that the following perpetual trophies will be awarded:

(a) Viking Trophy: best performance in ORC overall.

(b) Chesapeake Trophy: first in ORC I.

(c) Commodore H.H.J. Benson Trophy: first in ORC II.

(d) Harwood S. Strange Trophy: first in ORC III.

(e) William G. Sullivan Trophy: first in the J/30 class.

(f) Charles Dell Trophy: first in the J/105 class.

(g) J/22 Club Championship: best performance by an AYC member in the J/22 Class

(h) America's Trophy: this event will be part of AYC's season series for overall performance in ORC.

(i) G. di Marzo Centennial Cup: This event will be part of the Harbor 20 Fleet 5 Championship (along with the AYC Spring Harbor regatta).

(j) The Howard L. Lippincott Perpetual Trophy for the top placing Star.

21.3 Additional prizes may be awarded at the discretion of the organizing authority.

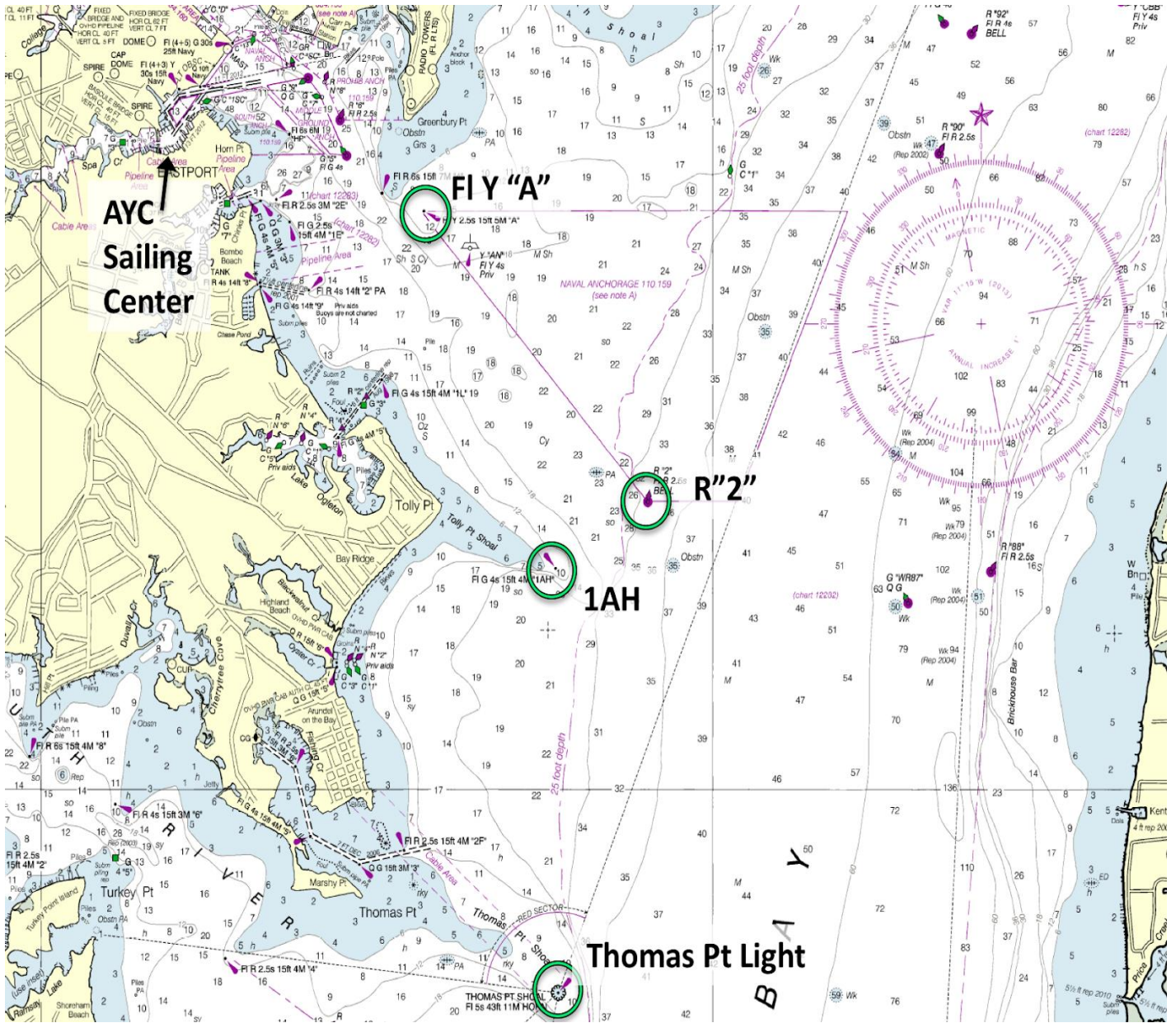
22 INSURANCE

22.1 Each participating boat shall be insured with valid third-party liability insurance with a minimum cover of \$300,000 combined single limit or shall be a vessel representing a Government agency. Competitors are solely responsible for obtaining the required coverage.

23 DISCLAIMER OF LIABILITY

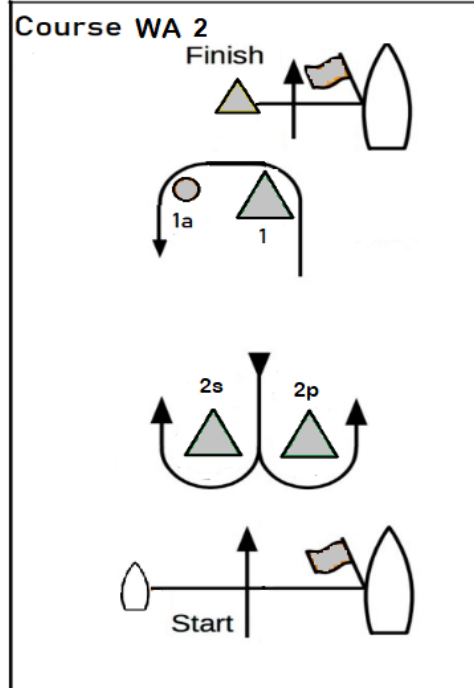
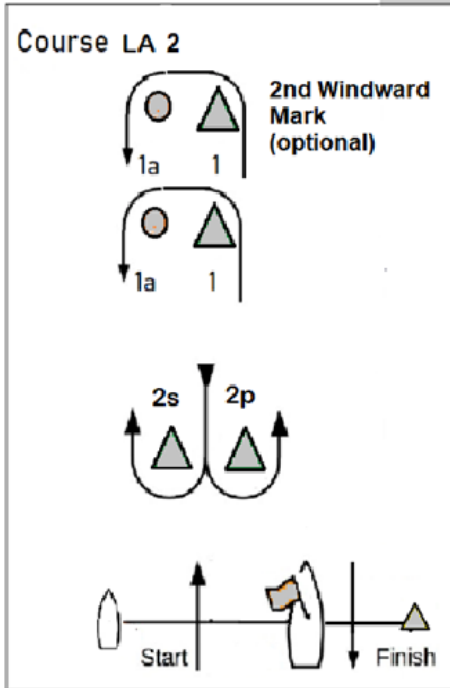
23.1 Competitors participate in the regatta entirely at their own risk. RRS 3 states: 'The responsibility for a boat's decision to participate in a race or to continue *racing* is hers alone.' By participating in this event each competitor agrees and acknowledges that sailing is a potentially dangerous activity with inherent risks, which are assumed by the competitor.

SI ATTACHMENT 1 - RACE AREA FOR DROP MARK RACES



SI ATTACHMENT 2 - DROP MARKS COURSES

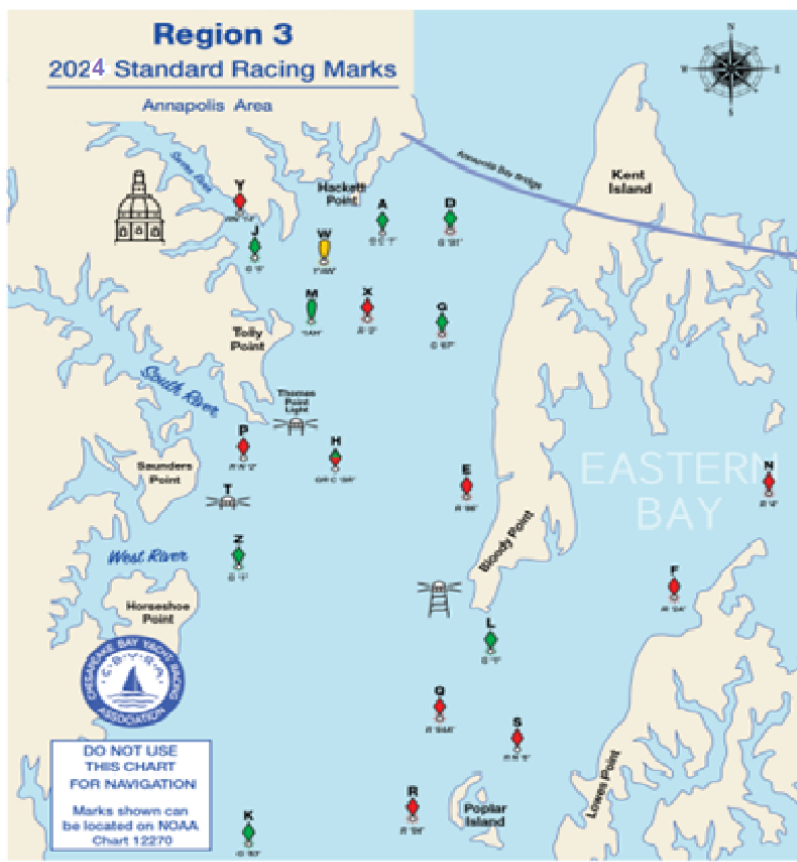
In the below table, the course designation is followed by the mark rounding order for that course. All marks except 2S are to be rounded to port. If the race committee announces on VHF radio that a gate will not be used, then mark 2S will not be set. The marks are described in SI 10. The starting line is described in SI 11.3. The finishing line is described in SI 14.



Course LA 2 Windward/Leeward, Leeward Finish	
Signal	Mark Rounding Order
LA 2	Start - 1 - 1a - 2s/2p - 1 - 1a - Finish

Course WA 2 Windward/Leeward - Windward Finish	
Signal	Mark Rounding Order
	Start - 1 - 1a - 2s/2p - 1 - 1a - 2s/2p - Finish

SI ATTACHMENT 3 - BAY COURSE GOVERNMENT MARK COURSE MARKS



NOTE: Former marks "B" and "C" have been DELETED, and new marks "D" and "Q" have been added as replacements.

Region 3 Standard Racing Marks - Annapolis Area

Mark	Govt. ID	Characteristics	Location	Lat 38 N	Lon 76 W
A	G C"1"	G Can	1.1 nm SSE of Hackett Point	58-12.104	24-52.249
D	G "91"	FI G 4s Buoy	1.3 nm SSW of Chesapeake Bay Bridge	58-59.103	23-16.547
E	R "86"	FI R 4s Buoy	2.0 nm N of Bloody Point	51-58.414	23-32.836
F	R "2A"	FI R 4s Bell	0.6 nm N of Wades Point	50-33.347	18-12.964
G	G "87"	G Buoy	3.3 nm S of Chesapeake Bay Bridge	55-58.127	23-32.776
H	GR C"SR"	GR Can	0.3 nm SE of Thomas Pt. Light	53-39.428	25-52.216
J	G "5"	FI G 4s Buoy	0.38 nm SW of Greenbury Pt	58-17.815	27-43.465
K	G "83"	FI G 4s GONG	2.5 nm WSW of Poplar Island	45-07.524	26-39.330
L	G "1"	FI G 4s Bell	1.0 nm S of Kent Point	49-07.418	22-07.829
M	"1AH"	FI G 4s 15ft	NNE of Tolly Point (Shoal inside)	56-09.043	26-10.042
N	R "4"	FI 4s Buoy	0.8 nm N of Tilghman Point	52-35.114	15-04.963
P	R N"2"	R Nun	1.6 nm WSW of Thomas Pt Light	53-44.311	27-52.247
Q	R "84A"	FI R 2.5s Buoy	2.16 NNW of Poplar Island	47-35.620	24-41.331
R	R "84"	FI R 4s Bell	1.3 nm W of Poplar Island	45-27.424	25-06.828
S	R N"8"	R Nun	0.95 nm NW of Lowes Point	47-07.424	20-52.831
T	Fixed	FI(2+1) R 6s 15ft	0.6 nm E of Saunders Pt Shoal Junction Light	53-01.796	28-37.321
U	RC Choice	Inflatable drop	May be set by R.C. at Starting Line		
V	RC Choice	Inflatable drop	May be set by R.C. as 1		
W	Y "AN"	FI Y 4s	NOAA Weather Buoy off of Greenbury Pt	57-49.010	26-48.370
X	R "2"	FI R 2.5s Bell	1.3 nm E of Tolly Point	56-30.000	25-29.000
Y	R N"14"	TR Nun	0.3 nm NNW of Triton Pt	59-09.072	28-40.118
Z	G "1"	FI G 4s Buoy	2.6 NM NE of Curtis Point	51-50.694	26-59.472

SI ATTACHMENT 4 - RIVER COURSE GOVERNMENT MARKS COURSES

