



September 6 – September 8, 2024  
Cape May, New Jersey

## SAILING INSTRUCTIONS

The Organizing Authority (OA) is the  
Corinthian Yacht Club of Cape May,  
and the  
J/70 Class Association (IJ70CA).

*The notation '[NP]' in a rule means that a boat may not protest another boat or request redress for a violation of that rule. This changes RRS 60.1.*

### 1. RULES

- 1.1. NoR 1 contains a list of rules for this event. Competitors are reminded to take note of these.
- 1.2. [DP] RRS 40.1 applies at all times while racing. All competitors are required to wear a life jacket or personal flotation device (PFD) while racing.

### 2. CHANGES TO SAILING INSTRUCTIONS

- 2.1. Any change to the SIs will be posted before 0915 on the day it will take effect, except that any change to the schedule of races will be posted by 2000 on the day before it will take effect.

### 3. COMMUNICATION

- 3.1. Notices to competitors will be posted on the Yacht Scoring Official Notice Board: [https://www.yachtscoring.com/notice\\_board.cfm?eid=16371](https://www.yachtscoring.com/notice_board.cfm?eid=16371)
- 3.2. Any questions regarding the NoR or these SIs shall be submitted in writing to the Race Committee (RC). The questions and any answers will be posted as in SI 3.1.
- 3.3. A competitors' briefing will be held at 0930 on Friday SEP 6, Saturday SEP 7 and, Sunday SEP 8. The Briefing will be held on the second story porch of the CYCCM clubhouse. The Competitors meeting for the optional practice race on Thursday SEP 5 will be held at 1100.

- 3.4. On the water, the RC intends to monitor and communicate with competitors on VHF radio channel 78A ('the VHF Channel'). Failure of the RC to broadcast, mistaken broadcasts, or failure of a competitor to receive this information will not be grounds for a request for redress. This changes RRS 60.1(b).
- 3.5. [NP] [DP] Boats shall use the radio to report retirement from racing and may use the radio to request or provide assistance in an emergency.
- 3.6. [DP] Except as provided in SI 3.5, a boat shall not make voice or data transmissions while racing and shall not receive voice or data communication that is not available to all boats. [DP]

**4. CODE OF CONDUCT**

- 4.1. [DP] Competitors and support persons shall comply with reasonable requests from race officials.

**5. SIGNALS MADE ASHORE**

- 5.1. Signals made ashore will be displayed from the Mast of the mark boat Ovah on the club docks. In the event Ovah is not available signals will be flown from the mast of the signal boat Cohort.
- 5.2. When flag AP is displayed ashore, "1 minute" is replaced with "not less than sixty minutes" in The Racing Rules of Sailing (RRS) Race Signal AP.

**6. SCHEDULE AND FORMAT OF RACES**

**6.1. Race Schedule**

Date	Competitor briefing	# of Races	First Warning Signal
<b>THU SEP 5</b>	<b>1100</b>	<b>1 practice (Optional)</b>	<b>1230</b>
<b>FRI SEP 6</b>	<b>0930</b>	<b>2 or 3</b>	<b>1130</b>
<b>SAT SEP 7</b>	<b>0930</b>	<b>2 or 3</b>	<b>1130</b>
<b>SUN SEP 8</b>	<b>0930</b>	<b>Upto 2</b>	<b>1100</b>

- 6.2. Up to eight (8) races are scheduled with up to three (3) races sailed in one day. The RC, at its discretion, may run fewer total races.
- 6.3. Subsequent races will start as soon as practical.
- 6.4. On Sunday, September 8, no warning signal will be made after 1400 local time. In the case of one or more general recall(s) when the initial warning signal was made prior to 1400, the RC may display subsequent warning signals after that time. This exception will not apply for a race that is postponed or abandoned.
- 6.5. All boats shall sail as one fleet.

**7. CLASS FLAG**

- 7.1. The class flag is a blue J/70 logo on a white background.

**8. RACING AREA**

- 8.1. **Addendum A** shows the location of the racing area. The racing areas are approximately 1.5 miles west of the Cape May Inlet off the Cape May Beaches or, approximately 1 mile NE of the Cape May Inlet off the Wildwood Crest Beaches. The location of the racing area for that day shall be announced at the morning briefing.

**9. COURSES**

- 9.1. The course to be sailed will be a windward-leeward format with four legs designated a W. The diagrams in **Addendum B** show the course, including the order in which marks are to be passed, and the side on which each mark is to be left.
- 9.2. No later than the warning signal for each race, the RC signal vessel will display a course board to identify the approximate magnetic bearing and distance to the first weather mark.

- 9.3. Courses will not be shortened using flag "S". This changes RRS 32. However, legs of the course may be shortened (or lengthened) pursuant to RRS 33.

## **10. MARKS**

- 10.1. Marks 1, 2S /2P (gate), are orange tetrahedrons  
10.2. Windward Offset Mark 1A is an orange tomato shaped mark  
10.3. New marks, as provided in SI 12.1 are yellow tetrahedrons.  
10.4. Starting marks are RC vessels with an orange flag. In the event a pin end RC vessel is not used, the pin end starting mark shall be a green tomato shaped mark.  
10.5. Finish line is between RC vessels with Blue flags. If a RC vessel is not available, finish line is between a green tomato shaped mark and a blue flag on a staff on a RC vessel.

## **11. THE START**

- 11.1. The starting line will consist of an RC Signal Boat vessel with an Orange Flag on the starboard end, and either another RC vessel with an Orange Flag, or green tomato shaped Mark.  
11.2. Sound and visual signals will be made by the RC signal vessel. As a courtesy the pin end start boat may also display visual signals.  
11.3. As a courtesy, to alert boats that a race will begin soon, at approximately 5 minutes before the first warning signal the Signal Boat shall make 4 horn signals and raise code flag "F" (a white flag with a red diamond shape) and announce via the VHF Channel (78a), the course, distance and magnetic heading to the first mark. Failure to hear or make an announcement shall not be grounds for a redress hearing. After the Announcement the "F" flag will be lowered with 4 horn sounds. The radio announcement does not change the responsibility of the competitors to check the course board posted on the stern of the Signal boat.  
11.4. Individual and General Recall flags will be displayed on the RC signal vessel in accordance with RRS 29 and may be displayed by other starting line boats as a courtesy. This changes RRS 29.1 and RRS 29.2.  
11.5. Boats subject to individual recall under RRS 29.1 or boats breaking RRS 30.3 (*U Flag Rule*) or RRS 30.4 (*Black Flag Rule*) will be broadcast on the VHF Channel using bow numbers or sail numbers as a courtesy.  
11.6. In the event of a General Recall or abandonment after the start during a RRS 30.4 (*Black Flag Rule*) start, the RC shall broadcast on the VHF Channel and display the bow number of any boat violating RRS 30.4 before the next warning signal. This changes RRS 30.4.  
11.7. The RC will attempt to make the broadcasts described in SI 11.5 and 11.6. However, the timing of such a broadcast, the sequence of the broadcasts or the failure to make or hear the broadcasts shall not be grounds for granting redress. This changes RRS 62.1(a).  
11.8. A boat that does not start within five (5) minutes after her starting signal will be scored Did Not Start (DNS) without a hearing. This change is added to RRS A5.1.

## **12. CHANGING THE NEXT LEG OF THE COURSE**

- 12.1. 1. To change the next leg of the course, the RC will lay a new mark (or move the finishing line) and remove the original mark as soon as practicable. When in a subsequent change a new mark is replaced, it will be replaced with the original mark.  
12.2. Notification will be in accordance with RRS 33 (a), 1,2, (b). In addition, the RC may announce the Change of Course information over the VHF Channel. Failure to broadcast or hear the information shall not be grounds for granting redress.

## **13. THE FINISH**

- 13.1. The finish line is between blue flags on staffs flying from two RC boats. If a RC boat is not used on the pin end of the finish line, the pin end of the finish line will be a green tomato shaped mark.  
13.2. After finishing, Boats protesting another boat are requested to notify the finish boat of its intent to file a protest and include the bow number of the boat to be protested. [NP]

## **14. PENALTY SYSTEM**

- 14.1. Appendix V, parts V1 and V2, shall be in effect.  
14.2. Penalties incurred while in the zone of the windward mark or on the offset leg shall be delayed and taken at the first reasonable opportunity on the downwind leg. This change is added to RRS 44.2.  
14.3. RRS Appendix P (Special Procedures for Rule 42) is in effect as specified in the NoR  
14.4. For breaches of non part 2 rules the protest committee may issue discretionary penalties less than DSQ.

14.5. Jury vessels may be positioned anywhere on the course area. Their position at any time will not be grounds for a request for redress. This changes RRS 60.1(b).

## **15. TIME LIMITS AND TARGET TIMES**

15.1. The race time limit for each race is 120 minutes. The target time for each race is 60-70 minutes. Failure to meet the target time will not be grounds for a request for redress. This changes RRS 60.1(b).

15.2. Boats failing to finish within 15 minutes after the first boat sails the course and finishes within the race time limit will be scored Time Limit Expired (TLE) without a hearing, unless they subsequently retire, are penalized, or are given redress. The score for TLE is the number of finishers plus two points, but no worse than the score for DNF. This changes RRS 35 and is added to RRS A4, A5, and A10.

15.3. The RC will lower the finish line flags with one sound to indicate that the time limit has expired.

## **16. HEARING REQUESTS**

16.1. The jury desk will be located in the main ballroom of the Clubhouse. The hearing room will be located in the garage of the Wally World Building or other locations as needed.

16.2. The protest time limit each day is sixty (60) minutes after the RC signal vessel docks on that day. This time will be posted on the Official Notice Board and at the jury desk within fifteen (15) minutes after the RC signal vessel docks.

16.3. The second sentence of RRS 62.2 is replaced with: "If the request is based on an incident in the racing area, it shall be filed within the protest time limit for that day."

16.4. A notice of boats scored per RRS A5.1 and SI **Addendum C** each day will be posted on the Official Notice Board and at the jury desk no later than twenty (20) minutes after the RC signal vessel docks on that day. The deadline for a request for redress based on these scores is the protest time limit for that day. This changes RRS 62.2.

16.5. The time limit for a request for redress based on the outcome of a scoring inquiry is 30 minutes after that outcome has been posted. This changes RRS 62.2.

16.6. Hearing request forms are available at the jury desk or on the regatta website.

16.7. Penalty acceptance forms are available at the jury desk or on the regatta website.

16.8. Notices will be posted no later than fifteen (15) minutes after the protest time limit each day on the Official Notice Board and at the jury desk to inform competitors of hearings in which they are parties or named as witnesses. Hearings will be heard as soon as possible.

16.9. On the last day of the event, a request for reopening a hearing shall be delivered within the protest time limit if the requesting party was informed of the decision on the previous day or no later than 30 minutes after the requesting party was informed of the decision on that day. This changes RRS 66.2.

16.10. On the last day of the event, a request for redress based on a jury decision shall be delivered no later than 30 minutes after the decision was posted. This changes RRS 62.2.

## **17. SCORING**

17.1. Scoring shall be according to the Low Point Scoring System of RRS A2 and A4 as follows:

17.2. When fewer than five (5) races have been completed, a boat's series score shall be the total of her race scores;

17.3. When five (5) or more races have been completed, a boat's series score shall be the total of her race scores excluding her worst score.

17.4. A minimum of one race is required to constitute a championship.

17.5. Preliminary results will be posted on the event website as soon as possible after racing each day.

17.6. Competitors shall notify the RC of any scoring inquiry by filing a Scoring Inquiry Form available at the jury desk or the regatta website. The deadline to file a scoring inquiry is the protest time limit or thirty (30) minutes after the preliminary results have been posted for that day, whichever is later.

## **18. SAFETY REGULATIONS**

18.1. [DP] [NP] Prior to the warning signal of her first race each day, each boat shall check-in with the RC signal vessel in the starting area. Each boat shall pass close astern on starboard tack and hail her bow number. When a boat has been recognized, the RC will hail the boat's bow number.

18.2. [DP] [NP] A boat that retires from a race or leaves the racing area between races shall notify the RC as soon as possible using the VHF Channel.

18.3. [DP] [NP] A boat not leaving the harbor for any of the day's racing shall inform the RC as soon as possible.

#### **19. BOW NUMBERS [NP]**

19.1. Bow numbers will be supplied by the OA in accordance with the J70ER 6 and J70ER Appendix A as shown in **Addendum D**.

19.2. Bow numbers shall be displayed from the time they are applied by the OA through the end of the event. It is the responsibility of the competitor to apply the bow numbers and ensure that the bow numbers remain on the boat and obtain replacements as necessary.

#### **20. REPLACEMENT OF CREW OR EQUIPMENT**

20.1. Substitution of competitors is not allowed without written approval of the event PRO prior to racing on that day.

20.2. Repair, alteration, replacement, or substitution of damaged or lost equipment will not be allowed unless authorized before racing by the event Technical Committee pursuant to J70ER 10 or if a technical representative is not present by the PRO if, off the water: by phone, text message, if on the water: hailing on the VHF Channel

#### **21. EQUIPMENT AND MEASUREMENT CHECKS**

21.1. [DP] Pursuant to J70ER 4, a boat, sails or equipment may be inspected at any time for compliance with the Event Equipment Rules (see J70ER 2), IJ70CA Class Rules (J70CR), the NoR and these SIs.

#### **22. OFFICIAL VESSELS**

22.1. [NP] Official vessels are listed as follows:

Function	Boat Name / RC Flag
Signal Boat	COHORT / RC Flag
Mark Boat	OVAH / RC Flag
Gate Mark Boat	HIGHER POWER / RC Flag
Start Pin Boat	GREEN STAMP / RC Flag
Finish Line Pin Boat	Fishin Chips / RC Flag
Media Boat	MASTER BLASTER Boston Whaler " M" Flag
Judges (two boats)	Red RIB 1/ Mako "J" Flag
Class Rep Boat	Red RIB 3
North Sails Race Observer	RIB

#### **23. TRASH DISPOSAL**

23.1. [DP] Trash shall be placed in the appropriate containers when the boats return to shore.

#### **24. BERTHING**

24.1. [DP] Boats shall be kept in their assigned places while in the harbor.

**25. PRIZES**

25.1. Prizes will be awarded as specified in the NoR.

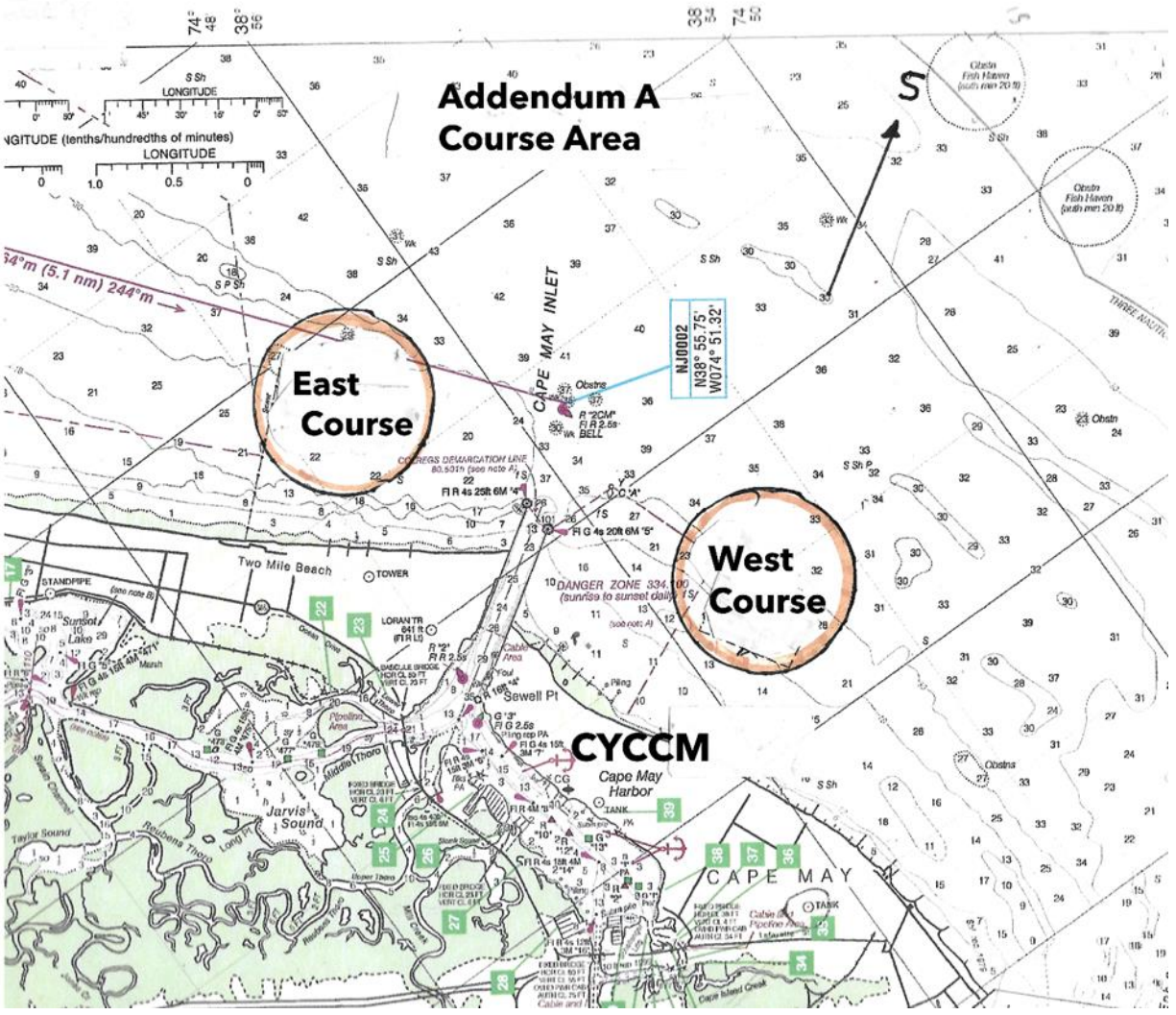
**26. RISK STATEMENT**

26.1. Competitors participate in the event entirely at their own risk. See RRS 3, Decision to Race. By participating in the event, each competitor agrees to release the race organizers (organizing authority, host yacht club, race committee, protest committee, sponsors, and any others acting in an official capacity for the event) from any and all liability associated with such competitor's participation in the event to the fullest extent permitted by law.

**27. RACE OFFICIALS**

Club Contact:	Corinthian Yacht Club of Cape May, 1819 Delaware Ave Cape May NJ 08204 609-884-8000 CYCCM.org
Event Chair:	Jack Lord, jwl4th@verizon.com
IJ70CA Class Executive:	Christopher Howell, CAE (howell@j70office.com)
Principal Race Officer:	James Forrester, forresterbrv@gmail.com
Chief Judge:	Jason Maher

Addendum A: Course Area



# Addendum A Course Area

**East Course**

NJ0002  
N38° 55.75'  
W074° 51.32'

**West Course**

**CYCCM**

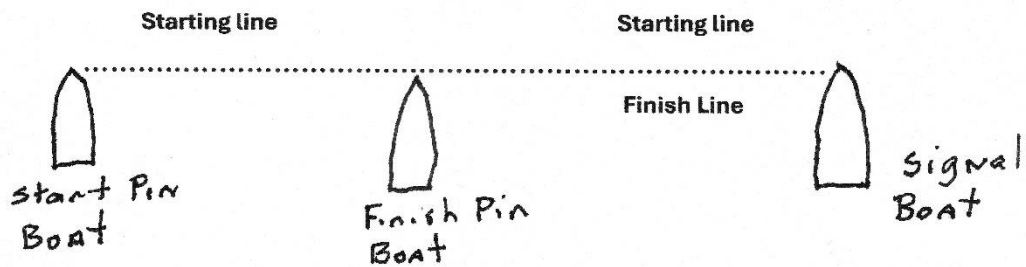
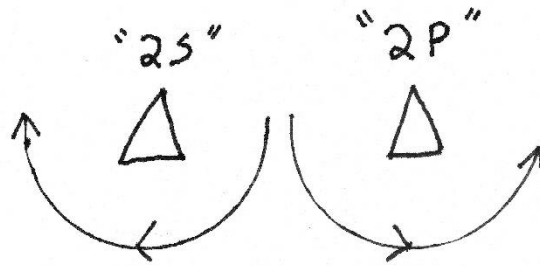
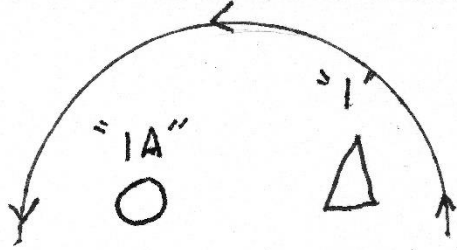
**CAPE MAY**

## Addendum B

Course "W" – Windward/Leeward

1-1A-2S/2P-1-1A-FINISH

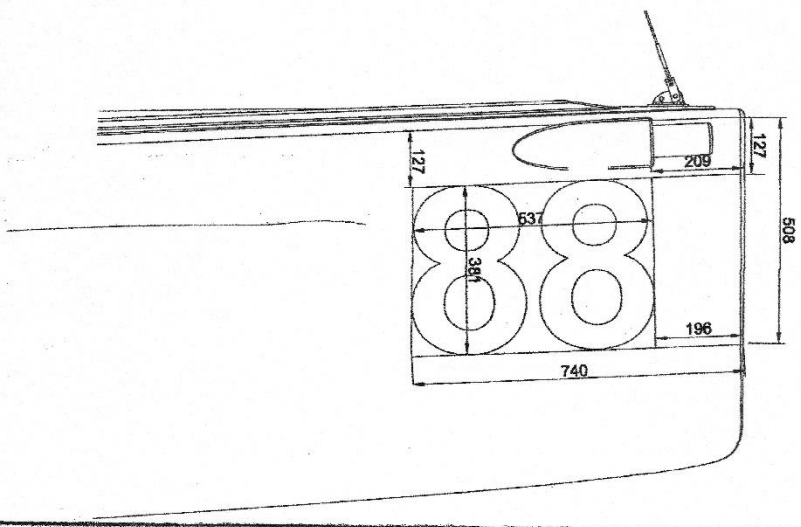
Note Finish Boat is in different location than Start Boat





## Addendum D

### BOW NUMBER POSITIONING



Layout for  
381mm / 15 inch  
numbers.

127 mm = 5 inches

209 mm = 8 1/4 inches (approx.)

196 mm = 7 3/4 inches (approx.)