



# 2024 Rolex Big Boat Series

September 11-15, 2024

## SAILING INSTRUCTIONS + AMENDMENT 1 +2

### GENERAL INFORMATION

- St. Francis Yacht Club is the Organizing Authority (OA) of the Rolex Big Boat Series.
- US Sailing is the Rating Authority (RA) for the ORC class.
- All times are PDT (Pacific Daylight Time).

The notation [NP] in a rule in the Sailing Instructions means it shall not be grounds for protest by a boat. This changes RRS 60.1(a).

The notation [DP] in a rule in the NOR or SI means that the penalty for a breach of that rule may, at the discretion of the jury, be less than disqualification.

### 1. CHANGES TO SAILING INSTRUCTIONS

- 1.1. Any change to the sailing instructions will be posted by 0930 on the day it will take effect, except any change to the schedule of races will be posted by 1900 on the day before it will take effect.
- 1.2. Before the warning signal the race committee may make oral changes to the Sailing Instructions as provided in RRS 90.2 (c). The procedure for changes made orally on the water is as follows: The Race Committee will announce over VHF: "Rolex Big Boat Series Regatta competitors, this is your race committee with an amendment to the Sailing Instructions". After announcing the change, the Race Committee will challenge one boat for an acknowledgment. This boat shall respond to this challenge without undue delay (e.g. "Race Committee, here is SAIL NUMBER, change received and understood"). Boats may without infringing RRS 41 request repetition of the message.

### 2. NOTICES TO COMPETITORS

- 2.1. Notices to competitors will be posted on the official regatta notice board located at <https://tinyurl.com/2024-RBBS-ONB> and may be posted in the hallway adjacent to the side (Regatta) entrance of StFYC.
- 2.2. The race committee may make radio broadcasts using the following VHF channels:

Starting Area	VHF Channel
Treasure Island	69
North Course	71
Race Deck	68

### 3. SIGNALS MADE ASHORE

- 3.1. Signals made ashore will be displayed from the flagpole located on the StFYC Race Deck.
- 3.2. All classes, except Classic class: When flag AP is displayed ashore, '1 minute' is replaced with 'not less than (60) sixty minutes. This changes RRS Race Signals.
- 3.3. Classic class only: When AP over Bravo is displayed ashore, Race Deck starting area races not started are postponed. The warning signal will be made one (1) minute after removal unless at that time the race is postponed again or abandoned. This changes RRS 27.3.

#### 4. SCHEDULE

4.1. The schedule is as follows. This changes the Notice of Race.

	Thursday, September 14	Friday, September 15	Saturday, September 16	Sunday, September 17
First Warning (TI & NC)	1100	1100	1100	1100
First Warning (Race Deck)	1300	1300	1300	1100

4.2. The Competitors' Briefing will take place in the courtyard on Wednesday, September 11 at 1730.

4.3. Addendum 'Schedule of Races' lists the schedule of races and their intended starting areas.

4.4. On the last day of the racing, no warning signal will be made after 1400; except that a warning signal for re-started class may be made after this time.

#### 5. CLASS FLAGS AND IDENTIFICATION

5.1. The class flags are as follows:

Class	Flag Description
One Design Classes	Black class insignia on a white field
ORC A	Black letter A on a white field
ORC B	Black letter B on a white field
ORC C	Black letter C on a white field
Classic	Pink flag

5.2. [NP] [DP] All boats shall display the big Rolex battle flag from the forestay while at the docks and the green Rolex backstay flag from the backstay while at the docks and racing.

#### 6. MARKS

6.1. The marks are described in Addendum 'Mark Descriptions'.

6.2. If a gate or offset mark is missing and has not been replaced with an object displaying Flag M, the remaining gate or offset mark shall be rounded to port.

#### 7. COURSES

7.1. The diagrams in Addendum 'Course Illustrations' show the courses, the order in which marks are to be passed, and the side on which each mark is to be left. Course distances are estimates.

7.2. No later than the warning signal, the RC signal boat / Race Deck will display the course to be sailed according to the course diagram.

#### 8. [DP] AREAS THAT ARE OBSTRUCTIONS

Each line bound by the following two points is designated as an obstruction. Boats are prohibited from crossing any of these lines while racing. Addendum 'Areas that are obstructions' shows the obstructions with graphics.

- Anita Rock Light located approximately 0.30nm west of StFYC ("Anita Rock" Q 20ft 5M) and the closest point ashore.
- Anita Rock Light and "ARo" (located approximately 45 yards at 350 degrees from Anita Rock Light).
- Yellow buoy "ARo" as defined above and the closest point ashore.
- The "H" Beam piling and the closest point ashore (located approximately 200 yards west of StFYC)
- StFYC inner mark "B" and the closest point ashore.

- f. The South Tower of the Golden Gate Bridge and the closest point ashore.
- g. The Green/Red Bell Buoy off the West end of Alcatraz Island and Alcatraz Island.
- h. The Green Buoy (G“3”) South of Point Blunt-Angel Island and the closest point ashore.
- i. The northeastern most corner of Pier 45 and Fl R 2.5s “2” on the easternmost end of the Aquatic Park breakwater.
- j. If set: A white temporary buoy off of Pier 45 and the midpoint of Pier 45.
- k. If set: The white temporary buoy mentioned in (j) and the white temporary buoy mentioned in (l).
- l. If set: A white temporary buoy off the Pier 39 west breakwater and the end of the Pier 39 west breakwater.

**9. THE START**

- 9.1. The starting areas listed in Addendum ‘Schedule of Races’ herein are intended locations only.
- 9.2. For the Treasure Island and North Course areas: The starting line will be between a staff displaying an orange flag on the RC signal boat, and the course side of a red inflatable cone, or a MarkSetBot, or a staff displaying an orange flag on a race committee boat.
- 9.3. For the Race Deck course area: The starting line will be between a red inflatable cone and a yellow placard on the Race Deck.
- 9.4. [DP] Boats whose warning signal has not been made shall avoid the starting area during the starting sequence for other classes/divisions.
- 9.5. All classes except classics: A boat failing to start within four (4) minutes after her starting signal shall be scored DNS without a hearing. This changes RRS A5.1 and A5.2.
- 9.6. Classics only: A boat failing to start within ten (10) minutes after her starting signal shall be scored DNS without a hearing. This changes RRS A5.1 and A5.2.

**10. RECALLS**

As a courtesy, the race committee will attempt to hail On Course Side (OCS) boats via VHF. Failure to execute this hail, the order or timing of hails, or the failure to receive a hail shall not relieve a boat of her sole obligation to start properly, nor shall it constitute an improper action or omission of the race committee under RRS 62.1(a).

**11. CHANGE OF THE NEXT LEG OF THE COURSE**

- 11.1. To change the next leg of the course, the race committee will move the original mark (or the finishing marks) to a new position.
- 11.2. The race committee may change a leg of the course by up to five (5) degrees in bearing and/or 0.2nm in length without a signal. This changes RRS 33.

**12. THE FINISH**

- 12.1. For downwind finishes “DW”: The finishing line will be between a staff displaying a blue flag on the signal boat and a red inflatable cone, opposite the starting line.
- 12.2. [DP] For race deck “RD” finishes: The finishing line shall be between StFYC outer mark A and a yellow placard on the StFYC Race Deck. Mark "B" must be kept to the south when finishing.

**13. TIME LIMITS**

- 13.1. Time limits and target times in minutes are as follows:

	Target Time	Time Limit	Finishing Window
‘DW’ finish	60	90	15
‘RD’ finish	90-150-210	150-210-240	45
Classics	90	150	90

- 13.2. The Finishing Window is the time for boats to finish after the first boat sails the course and finishes. Boats failing to finish within the Finishing Window, and not subsequently retiring, penalized or given redress, will be scored Time Limit Expired (TLE) without a hearing. A boat scored TLE shall be scored points for the finishing place one

more than the points scored by the last boat that finished within the Finishing Window. This changes RRS 35, A5.1, A5.2 and A10.

13.3. Failure to meet the time limits is not grounds for redress. This changes RRS 62.1(a).

#### **14. SAFETY REGULATIONS [NP] [DP]**

A boat that retires from a race shall notify the race committee at the first reasonable opportunity by VHF.

#### **15. PENALTY SYSTEM**

15.1. RRS Appendix T – Arbitration shall apply.

15.2. RRS Appendix V – Alternative Penalties will apply.

15.3. Classic Class only: RRS 44.3 shall apply.

#### **16. PROTESTS AND REQUESTS FOR REDRESS**

16.1. Electronic Hearing Request forms are available at:

[https://www.racingrulesofsailing.org/protests/new?event\\_id=9660](https://www.racingrulesofsailing.org/protests/new?event_id=9660). Forms may also be available at the jury desk located in the hallway adjacent to the StFYC Regatta Entrance. Hearing requests such as protests and requests for redress may be created and delivered to the race office electronically or via email to [racing@stfyc.com](mailto:racing@stfyc.com). All such requests shall be delivered within the appropriate time limit.

16.2. For each class, the protest time limit is 75 minutes after the last boat of the race course has finished within her Finishing Window in the last race of the day or the signal 'AP over A' or 'N over A' is made afloat, whichever is later. However, the protest time limit is 30 minutes after the signal 'AP over A' is made ashore.

16.3. In the event of a complaint by Vessel Traffic or the USCG, the protest time limit will be extended up to two (2) days after the conclusion of the regatta. This changes RRS 60.2(a) and RRS 61.3.

16.4. The protest committee will schedule hearings at its discretion each day and in the order it determines. The hearing schedule, available electronically at <https://www.racingrulesofsailing.org/schedules/9660/event>, will be posted no later than thirty (30) minutes after the close of the protest time limit. This constitutes the notification required by RRS 63.2.

16.5. At the protest committee's discretion, hearings may be conducted in-person, via Zoom video conference, or a combination of the two. For Zoom hearings, parties and witnesses are expected to join the meeting when it commences. Witnesses will be placed in the (virtual) Waiting Room on Zoom until called upon for testimony. The use of headsets is recommended, particularly if joining a hearing from a location where background noise cannot be controlled. It is the sole responsibility of each boat involved to be ready and have witnesses available when the hearing is called.

16.6. Notices of any other protests by the race committee, technical committee or protest committee will also be posted on the official notice board. This constitutes the notification required by RRS 61.1(b).

16.7. If the race committee posts a list of boats scored OCS, ZFP, UFD, or BFD on the official notice board before the protest time limit, a request for redress based on such a posted score shall be made no later than sixty (60) minutes after the protest time limit. This changes rule 62.2."

16.8. On the last scheduled day of racing, a request for redress on a protest committee decision, or a request to reopen a hearing, shall be delivered no later than thirty (30) minutes after the decision was announced, either written or orally. This changes RRS 62.2 and RRS 66.

#### **17. SCORING**

17.1. One (1) race must be completed to constitute a series.

17.2. A boat's series score will be the total of her race scores, with no score excluded. This changes RRS A2.1.

17.3. ORC only:

17.3.1. An ORC boat's corrected time will be calculated using her appropriate Time Correction Factor (TCF) found on Page 2 of 2024 ORC USA and CAN certificates. The choice of TCF for each race is not subject to redress. This changes rule 62.

17.3.2. Time allowances for ORC entries will be calculated using a choice of the 5-Band All Purpose Time-on-Time (TOT) Rating Models found at [www.ussailing.org/wp-content/uploads/2024/02/2024-USA-CAN-Scoring-options.pdf](http://www.ussailing.org/wp-content/uploads/2024/02/2024-USA-CAN-Scoring-options.pdf). The selection of which choice will be announced prior to the Warning Signal for each ORC class. The RC will monitor the wind during the race and if a sustained change in velocity makes it necessary to change the wind band, the RC will announce the change before the first boat finishes.

- 17.3.3. The scoring choices made by the RC shall not be subject to redress, this changes RRS 62.
- 17.4. Classics only: A Classic boat's corrected time will be calculated using her ORR EZ Time Correction Factor(TCF).
- 17.5. The Team Trophy shall be scored by using each boat's average percentage score (finish points divided by the number of starters for each race) within its respective class for all her races during the Series. The team score is an average of all boats' average percentage scores. The trophy will be awarded to the team with the lowest average percentage points.

## **18. COMMERCIAL TRAFFIC**

- 18.1. Racing occurs near active shipping channels. Ships transiting these channels are restricted in their ability to maneuver and race boats must not impede their safe navigation. The race committee would like to call special attention to the preamble to RRS Part 2.
- 18.2. A race committee boat may signal a boat that is racing to alter course to avoid impeding the passage of commercial vessels by making a sound signal (horn or whistle) and clearly displaying flag W at the boat. The signaled boat shall promptly comply with the signal unless compliance would create an unsafe condition. If a boat fails to comply with such a signal, the race committee shall protest the boat. In this case the protest committee shall assume that the course alteration would not have created an unsafe condition, and the protested boat shall have the burden of proving otherwise.
- 18.3. If a commercial vessel sounds five blasts at a boat which is racing, and the vessel or the USCG is subsequently able to identify the offending boat, the boat may be subject to protest and/or subject to violation of Rule 9 of the USCG Navigational Rules and Regulation (COLREGS) with penalties per CFR Title 33 U.S.C. 2072. In the event the race committee files the protest, the protest committee shall assume that the identified boat has impeded passage or violated the U.S. Inland Navigation Rules, and the identified boat shall have the burden of proving otherwise. Impeding the safe navigation of a commercial vessel may also result in USCG citations and fines. [SF Bay Rule 9 Violations](#).
- 18.4. A boat cannot exonerate herself when she may have broken this sailing instruction. When the jury decides that a boat has broken this sailing instruction, the penalty shall be disqualification not excludable (DNE).
- 18.5. The StFYC shall cooperate with and provide relevant information to the Coast Guard or other governmental authority regarding investigations of boats impeding ship traffic or violating U.S. Inland Navigation Rules (33 CFR 83).

## **19. [NP] [DP] MEDIA EQUIPMENT**

- 19.1. Boats assigned to install and operate onboard camera units shall pick up their units every morning at the Press Room (Game Room) and shall return them no later than protest time limit. Boats assigned to install camera units will be informed before 2100 the day before. A crew member of these boats shall join an instruction meeting at 0900 at the Press Room (Game Room).
- 19.2. The organizing authority may request competitors to carry on board and use two-way communication devices for media interviews. Using this device for media interviews does not violate NoR 11.2.

## **20. PRIZES**

- 20.1. Take home prizes will be awarded based on participation.
- 20.2. In addition to take-home prizes, the following perpetual trophies will be awarded: St. Francis Perpetual, City of San Francisco Perpetual, Atlantic Perpetual, Keefe-Kilborn Memorial, Richard Rheem Perpetual, and Commodore's Cup.
- 20.3. The Team Trophies will be awarded to the first place team of three boats.
- 20.4. Prizes not claimed at the prize giving ceremony will remain with the organizing authority.

## **21. ADDITIONAL INFORMATION**

For additional information please contact the StFYC Race Office at [racing@stfyc.com](mailto:racing@stfyc.com) or +1 (415) 655-7756.

# ROLEX BIG BOAT SERIES SAILING INSTRUCTIONS Addendum 'SCHEDULE OF RACES'

The intended schedule of races, course areas and starting order for the first race each day is as follows:

	Thursday, September 12	Friday, September 13	Saturday, September 14	Sunday, September 15
	<b>Treasure Island</b>	<b>Treasure Island</b>	<b>Treasure Island</b>	<b>Treasure Island</b>
	Races 1 & 2	Races 3 & 4	Races 5 & 6	Race 7
1st start	ORC A	J/105	ORC A	J/105
2nd start	ORC B	J/88	ORC B	J/88
3rd start	ORC C	Express 37	ORC C	Express 37
	<b>North Course</b>	<b>North Course</b>	<b>North Course</b>	<b>North Course</b>
	Races 1 & 2	Races 3 & 4	Races 5 & 6	Race 7
1st start	J/105	ORC A	J/105	ORC A
2nd start	J/88	ORC B	J/88	ORC B
3rd start	Express 37	ORC C	Express 37	ORC C
	<b>Race Deck</b>	<b>Race Deck</b>	<b>Race Deck</b>	<b>Race Deck</b>
	Races 1	Races 2	Races 3	Race 4
1st start	Classic	Classic	Classic	Classic

**ROLEX BIG BOAT SERIES  
SAILING INSTRUCTIONS  
Addendum 'MARK DESCRIPTIONS'**

MARK	DESCRIPTION
A	Yellow sphere "A" approx. 400 yds north of StFYC Race Deck
G	leeward gate: 2 yellow inflatable tetrahedrons to windward of the starting line.
L	Yellow inflatable tetrahedron, approximately 0.3 nm NNE of the yacht harbor entrance, 37.814/-122.439
W	Yellow inflatable tetrahedron set as a windward mark
Wo	Yellow inflatable tetrahedron set as an offset mark to mark W
X	Yellow/blue sphere "X" approximately 400 yds north of Golden Gate Yacht Club
1	Yellow inflatable tetrahedron set 0.40nm @ 312° M from Anita Rock
3	Yellow inflatable tetrahedron set approx. 0.15nm @ 165° M from Point Cavallo
6	Yellow Can buoy approx. 0.41nm @ 54° M from Q Red "2" Priv - near Ft. Mason
7	Red buoy "2" Fl R 6s approx. 1.30nm @ 57° M from Alcatraz Light Fl 5s 214ft 20M
8	Red buoy "4" Fl R 4s Horn approx. 1.13nm @ 95° M from Point Blunt
9	Yellow inflatable tetrahedron approx. 0.30nm @ 115° M from Red/Green buoy "HR" 1 Fl (2+1) R 6s
9o	Red inflatable cone offset mark set to the south of mark 9
12	Little Harding Rock [G "1" Fl G4s]
15	Large lighted yellow column buoy "Hank Easom" approx. 0.5 nm east of Yellow Bluff
16	Yellow Can buoy "Blackaller" 0.48nm @ 83° M from Fort Point
16o	Yellow inflatable cone offset mark set to the north of mark 16
17	Red/Green "HR" 1 Fl (2+1) R6s at Harding Rock
18	Green/Red buoy "BR" Fl (2+1) G 6s Bell at Blossom Rock
19	Yellow inflatable tetrahedron approx. 0.40nm @ 056° M from Pt. Diablo Light
21	Green Buoy "1" Fl G 6s 0.70nm approx 0.72nm at 47° M from Alcatraz Light Fl 5s 214ft 20M.
22	MarkSetBot (blue hull and yellow top) set approx. 0.7nm @ 135° M from Point Cavallo

**ROLEX BIG BOAT SERIES**  
**SAILING INSTRUCTIONS**  
**Addendum 'COURSE DESCRIPTIONS'**

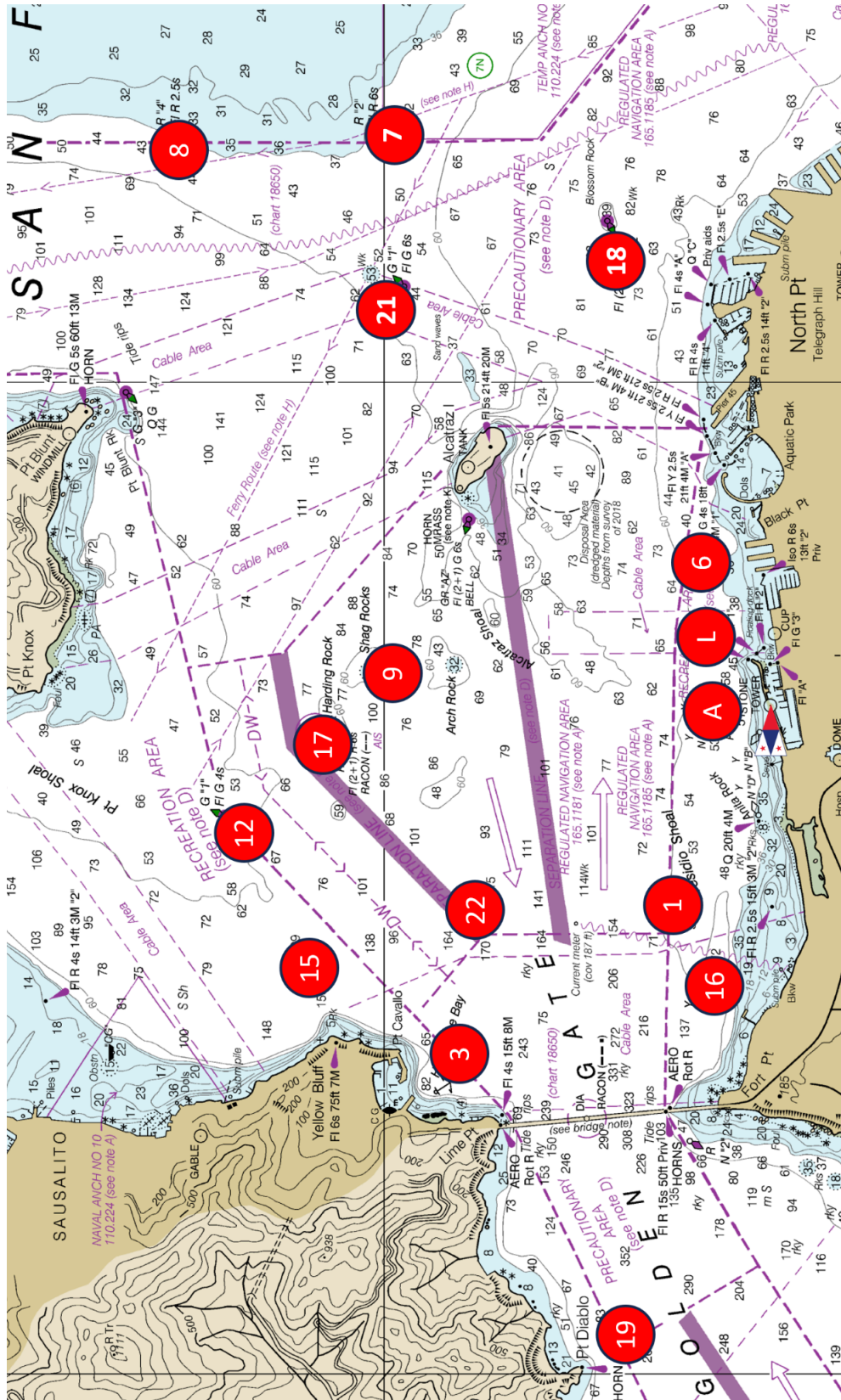
		Course								Finish	≈ Distance	Rating
North Course Starting Area  VHF Channel 71	10	Wp	Wo p							DW	n/a	50/50
	11	Wp	Wo p	G	Wp	Wo p				DW	n/a	50/50
	12	Ws	Wo s							DW	n/a	50/50
	13	Ws	Wo s	G	Ws	Wo s				DW	n/a	50/50
	14	9p	9o p	G	9p	9o p				DW	10.83	50/50
	15	22p	21s	1p						RD	10.01	60/40
	16	19p	21s	1p						RD	12.41	60/40
	17	19p	8p	19p	1p					RD	16.98	60/40
	18	19p	1p							RD	7.50	60/40
	19	22p	7p	19p	1p					RD	14.19	SF Bay
	20	22p	6p	7p	19p	1p				RD	14.71	SF Bay
	21	19p	21s	16s	16os	9p	19p	1p		RD	19.17	SF Bay
	22	22p	18p	7p	19p	1p				RD	14.78	SF Bay
23	3p	18p	7p	19p	1p				RD	15.39	SF Bay	

		Course								Finish	≈ Distance	Rating
Treasure Island Starting Area  VHF Channel 69	30	Wp	Wo p							DW	n/a	50/50
	31	Wp	Wo p	G	Wp	Wo p				DW	n/a	50/50
	32	Ws	Wo s							DW	n/a	50/50
	33	Ws	Wo s	G	Ws	Wo s				DW	n/a	50/50
	34	6p	G	6p						DW	n/a	50/50
	35	1p	G	6p						DW	n/a	50/50
	36	1p	G	1p						DW	n/a	50/50
	37	16s	16os	7p	1p					RD	11.33	60/40
	38	16s	16os	7p	19p	1p				RD	14.38	60/40
	39	16s	16os	7p	1p					RD	11.33	60/40
	40	16s	16os	7p	19p	18p	1p			RD	19.56	60/40
	41	22p	6p	18p	19p	1p				RD	13.30	SF Bay
	42	16s	16os	7p	22p	6p	18p	19p	1p	RD	20.47	SF Bay
	43	3p	6p	18p	19p	1p				RD	14.17	SF Bay
	44	16s	16os	7p	3p	6p	18p	19p	1p	RD	21.31	SF Bay

		Course								Finish	≈ Distance
Race Deck Starting Area  VHF Channel 68	1	16s	16os	12s	Ls	1p				RD	6.61
	2	16s	16os	12p	15p	Ls	1p			RD	7.43
	3	16s	16os	12p	15p	12p	15p	Ls	1p	RD	8.74
	4	16s	16os	12p	15p	Ls	19p	1p		RD	10.71
	5	16s	16os	Xs	As	12p	1p			RD	6.92
	6	16s	16os	12s	Ls	19p	1p			RD	9.88
	7	16s	16os	17p	15p	Ls	1p			RD	7.58
	8	16s	16os	17p	15p	Lp	17p	1p		RD	9.69
	9	16s	16os	17p	12p	15p	Ls	1p		RD	7.73



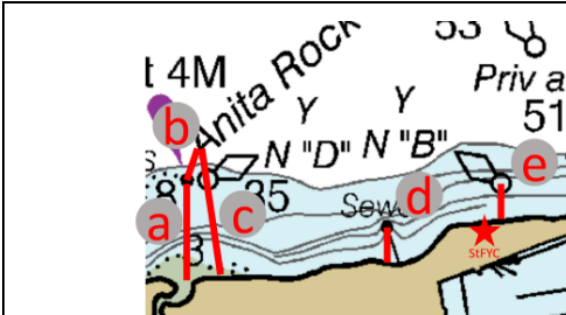
# ROLEX BIG BOAT SERIES SAILING INSTRUCTIONS Addendum 'MAP OF RACING AREAS'



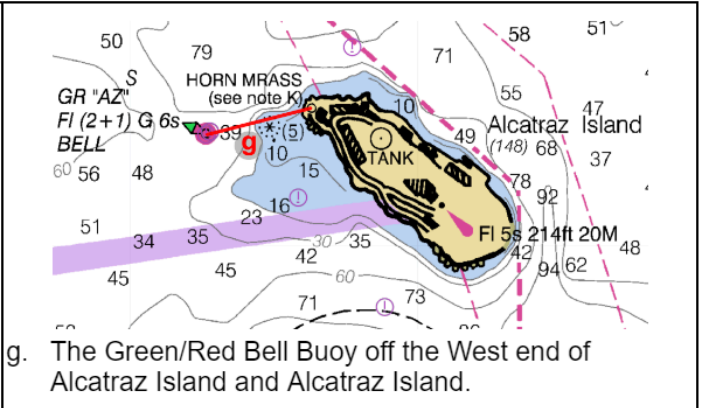
# ROLEX BIG BOAT SERIES SAILING INSTRUCTIONS

## Addendum 'AREAS THAT ARE OBSTRUCTIONS'

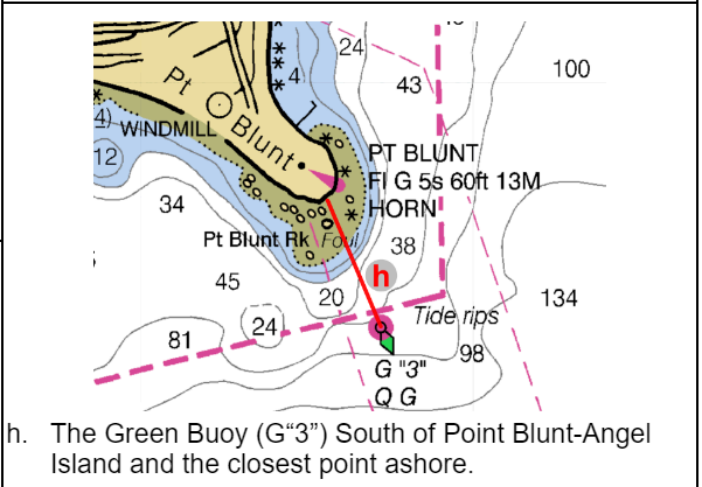
Unless otherwise specified in the SI, any line bounded by the following points will be designated as an obstruction. Boats are prohibited from crossing any of these lines during the race.



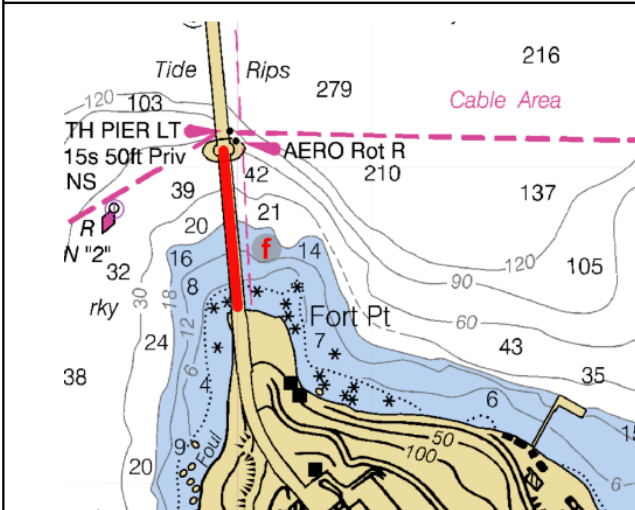
- a. Anita Rock Light located approximately 0.30nm west of StFYC ("Anita Rock" Q 20ft 5M) and the closest point ashore.
- b. Anita Rock Light and "ARo" (located approximately 45 yards at 350 degrees from Anita Rock Light).
- c. Yellow buoy "ARo" as defined above and the closest point ashore.
- d. The "H" Beam piling and the closest point ashore (located approximately 200 yards west of StFYC)
- e. StFYC inner mark "B" and the closest point ashore.



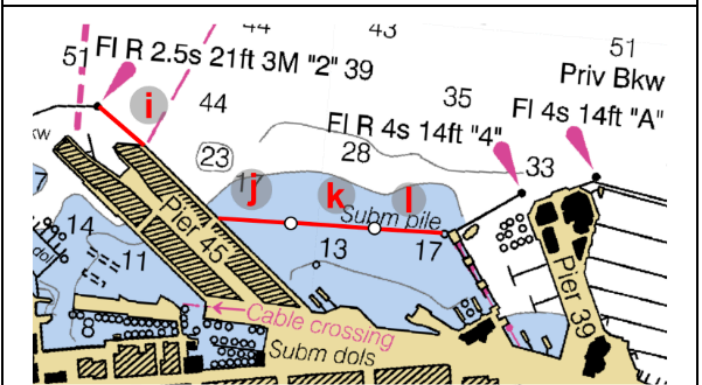
- g. The Green/Red Bell Buoy off the West end of Alcatraz Island and Alcatraz Island.



- h. The Green Buoy (G"3") South of Point Blunt-Angel Island and the closest point ashore.



- f. The South Tower of the Golden Gate Bridge and the closest point ashore.



- i. The northeastern most corner of Pier 45 and FI R 2.5s "2" on the easternmost end of the Aquatic Park breakwater.
- j. If set: A white temporary buoy off of Pier 45 and the midpoint of Pier 45.
- k. If set: The white temporary buoy mentioned in (j) and the white temporary buoy mentioned in (i).
- l. If set: A white temporary buoy off the Pier 39 west breakwater and the end of the Pier 39 west breakwater.