

# 2024 PHYLLIS KLEINMAN SWIFTSURE REGATTA

August 17-18, 2024

Organizing Authority (OA): St. Francis Yacht Club

## SAILING INSTRUCTIONS + **AMENDMENT 1**

The notation [NP] in a rule in the NOR means it shall not be grounds for protest by a boat. This changes RRS 60.1(a).

The notation [DP] in a rule in the NOR or SI means that the penalty for a breach of that rule may, at the discretion of the protest committee, be less than disqualification.

### 1 CHANGES TO SAILING INSTRUCTIONS

- 1.1 Changes to the sailing instructions will be posted no later than 1000 hours on the day it will take effect, except that changes to the schedule of races will be posted by 1900 hours on the day before it will take effect.
- 1.2 Before the warning signal the race committee may make oral changes to the Sailing Instructions as provided in RRS 90.2 (c). The procedure for changes made orally on the water is as follows: The Race Committee will announce over VHF: "Phyllis Kleinman Swiftsure Regatta competitors, this is your race committee with an amendment to the Sailing Instructions". After announcing the change, the race committee will attempt to obtain acknowledgement from competitors. Boats may without infringing RRS 41 request repetition of the message.

### 2 COMMUNICATION WITH COMPETITORS

- 2.1 Notices to competitors will be posted on the official regatta notice board located at [the event website](#).
- 2.2 On the water the race committee intends to communicate on VHF channel 72 for the City Front course and VHF channel 69 for the Treasure Island and North course.
- 2.3 [DP] From the first warning signal until the end of the last race of the day, except in an emergency, a boat shall not make voice or data transmissions and shall not receive voice or data communication that is not available to all boats.

### 3 SIGNALS MADE ASHORE

- 3.1 Signals made ashore will be displayed from the flagpole located at the StFYC race deck.
- 3.2 All classes, except Folkboat: When flag AP is displayed ashore, '1 minute' is replaced with 'not less than 30 minutes'. This changes rule Race Signals AP.

### 4 SCHEDULE OF RACES

- 4.1 The schedule is as follows. This changes the Notice of Race.

Date	Time	Event	Location	Races
Friday, August 16	1300-1900	J/105, J/88, and ORC/PHRF only: Velocitek ProStart pickup	Race Office	
	1300-1900	Backstay Flag Pick-Up		
Saturday, August 17	0830	J/105, J/88, and ORC/PHRF only: Velocitek ProStart pickup	Race Office	
	0900	Competitors' Meeting & Velocitek Information Session	Starting Line Room GG+NW Room	
	0915	Backstay Flag Pick-Up		
	1130	First Warning Signal		up to 3
	after racing	Social & Velocitek Live race replays	Starting Line Room GG+NW Room	

Sunday, August 18	1130	First Warning Signal		up to 3
	after racing	Social & Awards	Starting Line Room	

The regatta socials are included in the entry fee for the sailors. Guests are welcome and encouraged to purchase tickets.

- 4.2 On the last scheduled day of racing no warning signal will be made after 1600 hours.

## 5 CLASS FLAGS AND IDENTIFICATION

- 5.1 One design classes: Respective class insignia on a white field.  
 5.2 ORC/PHRF class: Black letter "A" on white field.  
 5.3 [NP] [DP] Each boat receives a backstay flag during check-in and shall fly it on the backstay from the first start on the first day until the end of racing on the last day.

## 6 MARKS

- 6.1 The Addendum 'Mark Description' describes the marks.  
 6.2 If a gate mark is missing and has not been replaced with an object displaying Flag M, the remaining gate mark shall be rounded to port.

## 7 COURSES

- 7.1 J/105, J/88, Moore 24 and ORC/PHRF boats will sail on the Treasure Island venue on Saturday and the North Course venue on Sunday.  
 7.2 Folkboat will sail on the City Front venue.  
 7.3 The diagrams in Addendum 'Course Illustrations' show the courses, the order in which marks are to be passed, and the side on which each mark is to be left.  
 7.4 No later than the warning signal, the race committee signal vessel will display the course to be sailed according to the course diagram.

## 8 [DP] AREAS THAT ARE OBSTRUCTIONS

Each line bound by the following two points is designated as an *obstruction*. Boats are prohibited from crossing any of these lines while *racing*. Addendum 'Areas that are obstructions' shows the obstructions with graphics.

- Anita Rock Light located approximately 0.30nm west of StFYC ("Anita Rock" Q 20ft 5M) and the closest point ashore.
- Anita Rock Light and "ARo" (located approximately 45 yards at 350 degrees from Anita Rock Light).
- Yellow buoy "ARo" as defined above and the closest point ashore.
- The "H" Beam piling and the closest point ashore (located approximately 200 yards west of StFYC)
- StFYC inner mark "B" and the closest point ashore.
- The South Tower of the Golden Gate Bridge and the closest point ashore.
- The Green/Red Bell Buoy off the West end of Alcatraz Island and Alcatraz Island.
- The Green Buoy (G"3") South of Point Blunt-Angel Island and the closest point ashore.
- The northeastern most corner of Pier 45 and Fl R 2.5s "2" on the easternmost end of the Aquatic Park breakwater.
- If set: A white temporary buoy off of Pier 43-1/2 and the end of Pier 43-1/2.
- If set: The white temporary buoy off of Pier 39 mentioned in (j) and the white temporary buoy off of Pier 43-1/2 mentioned in (l).
- If set: A white temporary buoy off of Pier 39 and the end of Pier 39.

## 9 THE START

- 9.1 All classes, except Folkboat: The starting line will be between staffs displaying orange flags on the starting marks. The starting line will be between a staff displaying an orange flag on the RC signal boat, and a staff displaying an orange flag on a race committee boat.
- 9.2 Folkboat class only: The starting line will be between the StFYC outer mark "A" or, if "A" is not present, a red inflatable cone, and a yellow placard on the Race Deck.

- 9.3 A small inflatable white ball may be in the vicinity of the starting line. This white ball is not part of the starting line.
- 9.4 [DP] Boats whose warning signal has not been made shall avoid the starting area during the starting sequence for other divisions.
- 9.5 For boats with Velocitek ProStart devices, the first start on Saturday will be a practice start and will be recalled.
- 9.6 Boats failing to start within four (4) minutes after their starting signal shall be scored DNS, without a hearing. This changes RRS A4 and A5.
- 9.7 The intended starting order for the first race of each day is as follows:  
City Front: Folkboat  
Treasure Island and North Course: ORC/PHRF, J/105, J/88, Moore 24.

**10 RECALLS**

- 10.1 As a courtesy, the race committee may attempt to hail On Course Side (OCS) boats via VHF. Failure to execute this hail, the order or timing of hails, or the failure to receive a hail shall not relieve a boat of her sole obligation to start properly, nor shall it constitute an improper action or omission of the race committee under RRS 62.1(a).
- 10.2 For boats equipped with Velocitek devices the race committee may use the Velocitek messaging technology instead of OCS hails to inform boats of OCS status.

**11 CHANGE OF THE NEXT LEG OF THE COURSE**

- 11.1 To change the next leg of the course, the race committee will move the original mark (or the finishing mark) to a new position.
- 11.2 The race committee may change a leg of the course by up to five (5) degrees in bearing and/or 0.2nm in length without a signal. This changes RRS 33.

**12 THE FINISH**

- 12.1 For downwind finishes “DW”: The finishing line will be between a staff displaying a blue flag on the signal boat and a red inflatable cone, opposite the starting line.
- 12.2 [DP] For race deck “RD” finishes and Folkboat class: The finishing line shall be between StFYC outer *mark* A and a yellow placard on the StFYC Race Deck. Boats shall keep StFYC inner *mark* “B” to the south while *finishing*.

**13 TIME LIMITS**

- 13.1 Time limits and target times in minutes are as follows:

	Target Time	Mark 1 Time Limit	Time Limit	Finishing Window
‘DW’ finish	60	30	90	15
‘RD’ finish	90	60	150	45
Folkboat only	45	20	70	15

- 13.2 If no boat has rounded Mark 1 before the time specified above, the race will be abandoned.
- 13.3 The Finishing Window is the time for boats to finish after the first boat sails the course and finishes. Boats failing to finish within the Finishing Window, and not subsequently retiring, penalized or given redress, will be scored Time Limit Expired (TLE) without a hearing. A boat scored TLE shall be scored points for the finishing place one more than the points scored by the last boat that finished within the Finishing Window. This changes RRS 35, A5.1, A5.2 and A10.
- 13.4 Failure to meet the time limits is not grounds for redress. This changes RRS 62.1(a).

**14 [NP] [DP] SAFETY REGULATIONS**

A boat that retires from a race shall notify the race committee at the first reasonable opportunity by VHF.

**15 PENALTY SYSTEM**

RRS Appendix V1 and V2 Alternative Penalties apply.

## 16 PROTESTS AND REQUESTS FOR REDRESS

- 16.1 Electronic Hearing Request forms are available at: [https://www.racingrulesofsailing.org/protests/new?event\\_id=9341](https://www.racingrulesofsailing.org/protests/new?event_id=9341). Forms may also be available at the jury desk located in the hallway adjacent to the StFYC Regatta Entrance. Hearing requests such as protests and requests for redress may be created and delivered to the race office electronically or via email to [racing@stfyc.com](mailto:racing@stfyc.com). All such requests shall be delivered within the appropriate time limit.
- 16.2 For each class, the protest time limit is 75 minutes (except for the Folkboat class for which the protest time limit is 60 minutes) after the last boat of the race course has finished within her Finishing Window in the last race of the day or the signal 'AP over A' or 'N over A' is made afloat, whichever is later. However, the protest time limit is 30 minutes after the signal 'AP over A' is made ashore.
- 16.3 In the event of a complaint by Vessel Traffic or the USCG, the protest time limit will be extended up to two (2) days after the conclusion of the regatta. This changes RRS 60.2(a) and RRS 61.3.
- 16.4 The protest committee will schedule hearings at its discretion each day and in the order it determines. The hearing schedule, available electronically at <https://www.racingrulesofsailing.org/schedules/9341/event>, will be posted no later than thirty (30) minutes after the close of the protest time limit. This constitutes the notification required by RRS 63.2.
- 16.5 At the protest committee's discretion, hearings may be conducted in-person, via Zoom video conference, or a combination of the two. For Zoom hearings, parties and witnesses are expected to join the meeting when it commences. Witnesses will be placed in the (virtual) Waiting Room on Zoom until called upon for testimony. The use of headsets is recommended, particularly if joining a hearing from a location where background noise cannot be controlled. It is the sole responsibility of each boat involved to be ready and have witnesses available when the hearing is called.
- 16.6 Notices of any other protests by the race committee, technical committee or protest committee will also be posted on the official notice board. This constitutes the notification required by RRS 61.1(b).
- 16.7 If the race committee posts a list of boats scored OCS, ZFP, UFD, or BFD on the official notice board before the protest time limit, a request for redress based on such a posted score shall be made no later than sixty (60) minutes after the protest time limit. This changes rule 62.2."
- 16.8 On the last scheduled day of racing, a request for redress on a protest committee decision, or a request to reopen a hearing, shall be delivered no later than thirty (30) minutes after the decision was announced, either written or orally. This changes RRS 62.2 and RRS 66.

## 17 SCORING

- 17.1 One (1) race will constitute a series.
- 17.2 For the J/105 division: all races will count towards a boat's series score. This changes RRS A2 **and the NOR.**
- 17.3 For other classes: when fewer than five races are completed, a boat's series score shall be the total of her race scores; when five or more races are completed, a boat's series score shall be the total of all races excluding her worst score. This changes RRS A2 **and the NOR.**
- 17.4 For ORC/PHRF only:
- 17.4.1. A boat's corrected time will be calculated using her appropriate ORC TCF depending on the wind strength and course.
- 17.4.2. Time allowances for ORC entries will be calculated using a choice of the 5-Band All Purpose Time-on-Time (TOT) Rating Models found at [www.ussailing.org/wp-content/uploads/2024/02/2024-USA-CAN-Scoring-options.pdf](http://www.ussailing.org/wp-content/uploads/2024/02/2024-USA-CAN-Scoring-options.pdf). The selection of which choice will be announced prior to the Warning Signal for each ORC class. The RC will monitor the wind during the race and if a sustained change in velocity makes it necessary to change the wind band, the RC will announce the change before the first boat finishes.
- 17.4.3. The scoring choices made by the RC shall not be subject to redress, this changes RRS 62.

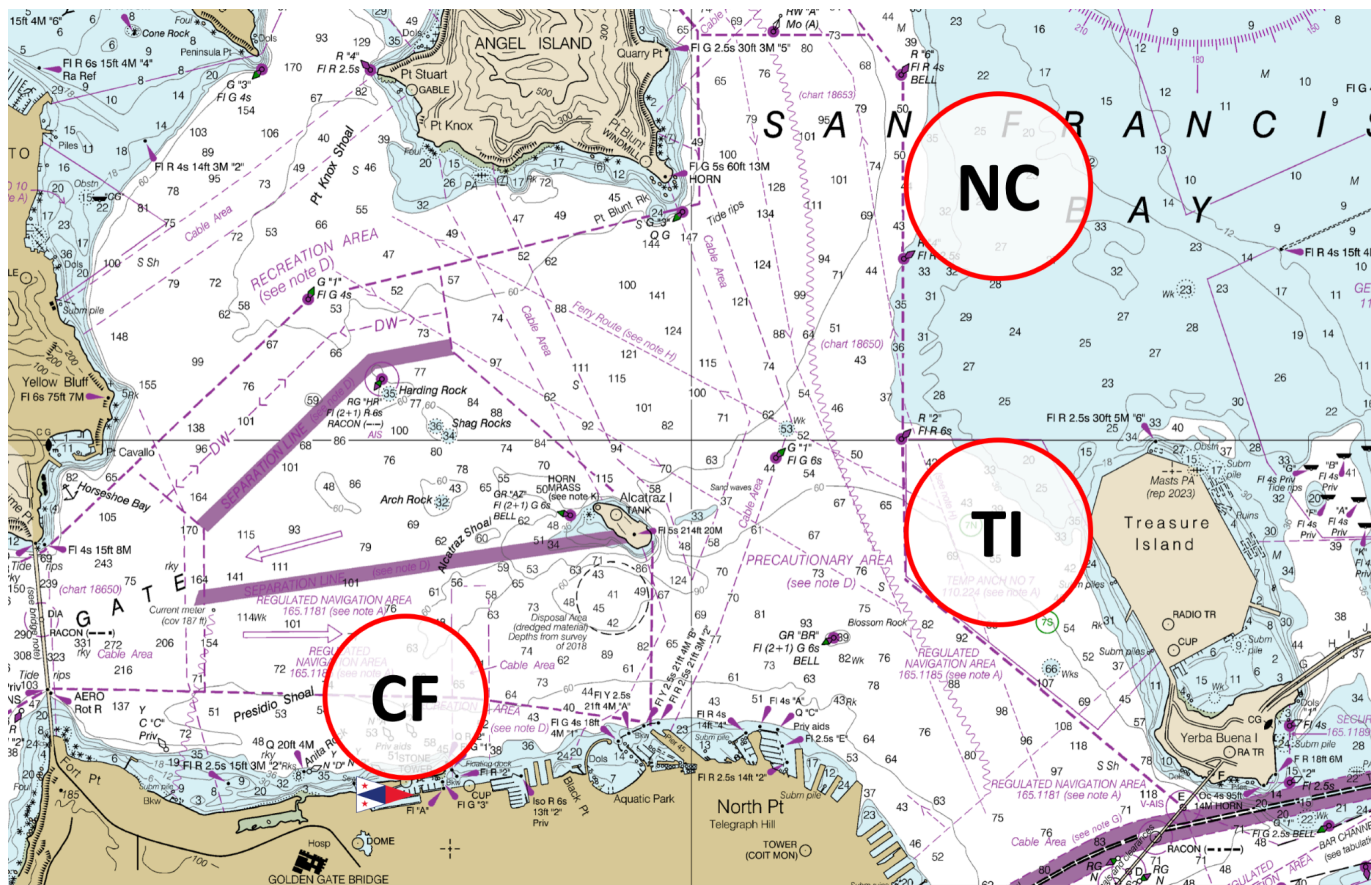
## 18 COMMERCIAL TRAFFIC

- 18.1 Racing occurs near active shipping channels. Please note the preamble to RRS Part 2.
- 18.2 A race committee boat may signal a boat that is racing to alter course to avoid impeding the passage of commercial vessels by making a sound signal (horn or whistle) and pointing flag W at the boat. The signaled boat shall promptly comply with the signal unless compliance would create an unsafe condition. If a boat fails to comply with such a signal, the race committee shall protest the boat. In this case, the protest committee shall assume that the course alteration would not have created an unsafe condition, and the protested boat shall have the burden of proving otherwise.
- 18.3 If a commercial vessel sounds five blasts at a boat that is racing, and/or the vessel or the USCG is subsequently able to identify the offending boat, the boat may be subject to protest. In the event the race committee files the protest, the protest committee shall assume that the identified boat has impeded passage or violated the U.S. Inland Navigation Rules, and the identified boat shall have the burden of proving otherwise.
- 18.4 A boat cannot exonerate herself when she may have broken this SI. When a protest committee decides that a boat has broken this SI, the penalty shall be disqualification not excludable (DNE).
- 18.5 The StFYC shall cooperate with and provide relevant information to the Coast Guard or other governmental authorities regarding investigations of boats impeding ship traffic or violating U.S. Inland Navigation Rules (33 CFR 83).

## 19 FURTHER INFORMATION

Regatta Chair	Susan Ruhne	<a href="mailto:sruhne@yahoo.com">sruhne@yahoo.com</a>	415-250-8300
Regatta Co-Chair	Larry Swift	<a href="mailto:larryswift@yahoo.com">larryswift@yahoo.com</a>	415-279-2596
PRO / Race Director	Felix Weidling	<a href="mailto:racedirector@stfyc.com">racedirector@stfyc.com</a>	415-820-3710
Course Race Officer	John Siegel	<a href="mailto:john@johnsiegel.com">john@johnsiegel.com</a>	408-234-0442
Course Race Officer	Gerard Sheridan	<a href="mailto:gerard.sheridan@gmail.com">gerard.sheridan@gmail.com</a>	415-810-2004
Course Race Officer	Richard Reitmeyer	<a href="mailto:rareitmeyer@gmail.com">rareitmeyer@gmail.com</a>	650-380-0449
Chief Judge	Greg Meagher	<a href="mailto:gwmeagher@gmail.com">gwmeagher@gmail.com</a>	510-541-2543
Race Office	Caleigh Thompson	<a href="mailto:racing@stfyc.com">racing@stfyc.com</a>	415-655-7756

# ADDENDUM 'Racing Areas'





**ADDENDUM 'TI / NC - Course Illustrations'**

All classes, except Folkboat

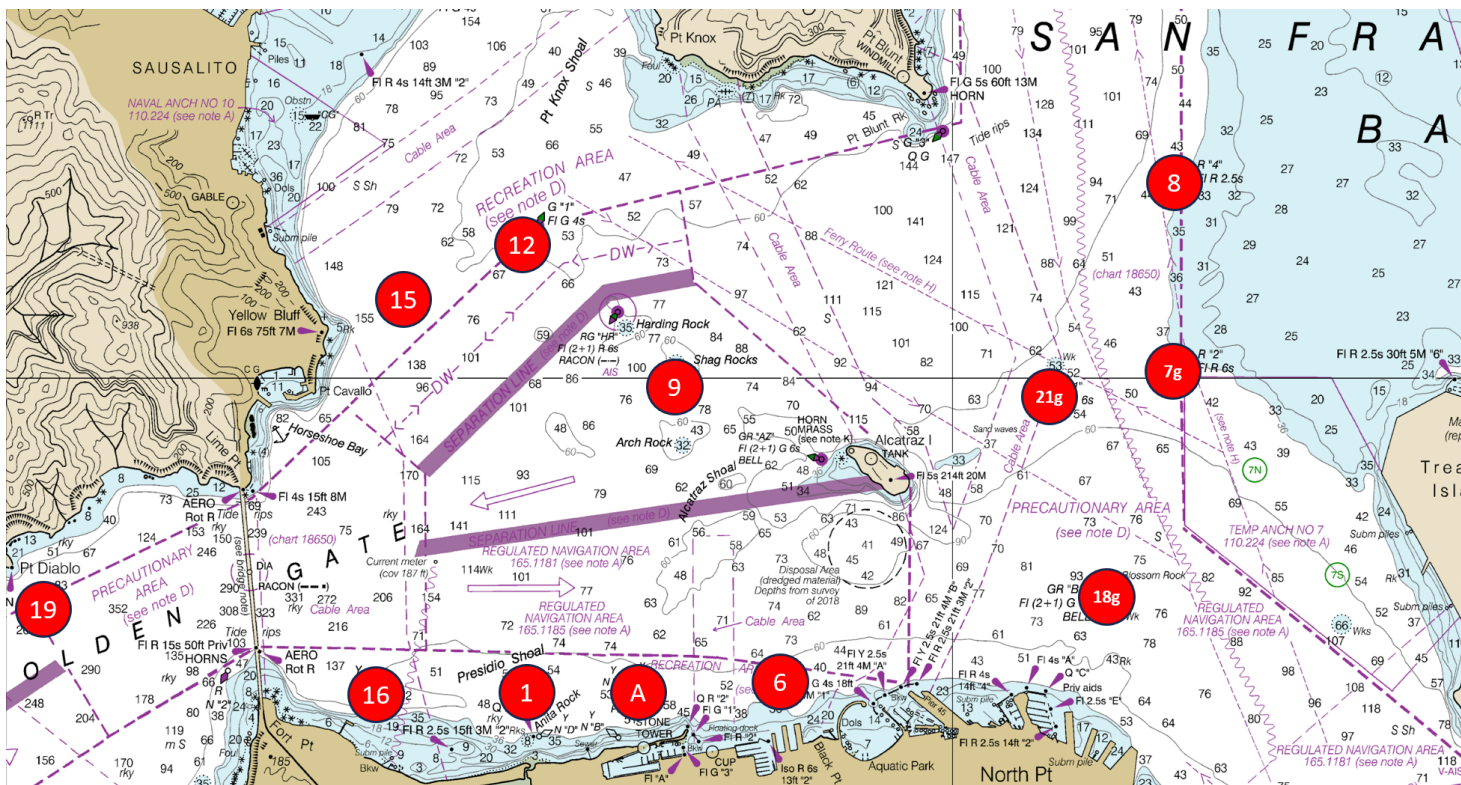
	Course							Finish	≈ Distance	Rating
North Course Starting Area  VHF Channel 69	10	Wp	Wo p					DW	n/a	50/50
	11	Wp	Wo p	G	Wp	Wo p		DW	n/a	50/50
	12	Ws	Wo s					DW	n/a	50/50
	13	Ws	Wo s	G	Ws	Wo s		DW	n/a	50/50
	14	9p	G	9p				DW	n/a	50/50
	15	12p	21g	1p				RD	8.56	60/40
	16	19p	7g	1p				RD	13.54	60/40
	17	19p	G	19p	1p			RD	17.17	60/40
	18	19p	1p					RD	7.5	60/40
	19	15p	6p	19p	1p			RD	11.39	SF Bay
	20	15p	6p	7g	19p	1p		RD	15.16	SF Bay
	21	19p	18g	16s	9p	19p	1p	RD	19.17	SF Bay
	22	15p	18g	8p	19p	1p		RD	15.86	SF Bay

	Course							Finish	≈ Distance	Rating	
Treasure Island Starting Area  VHF Channel 69	30	Wp	Wo p					DW	n/a	50/50	
	31	Wp	Wo p	G	Wp	Wo p		DW	n/a	50/50	
	32	Ws	Wo s					DW	n/a	50/50	
	33	Ws	Wo s	G	Ws	Wo s		DW	n/a	50/50	
	34	6p	G	6p				DW	n/a	50/50	
	35	1p	G	6p				DW	n/a	50/50	
	36	1p	G	1p				DW	n/a	50/50	
	37	16s	7g	1p				RD	11.33	60/40	
	38	16s	7g	19p	1p			RD	14.38	60/40	
	39	16s	21g	1p				RD	10.22	60/40	
	40	16s	21g	19p	18g	1p		RD	18.43	60/40	
	41	16s	21g	15p	6p	18g	19p	1p	RD	20.13	SF Bay
	42	16s	7g	15p	6p	18g	19p	1p	RD	21.23	SF Bay

# ADDENDUM 'TI / NC - Mark Descriptions'

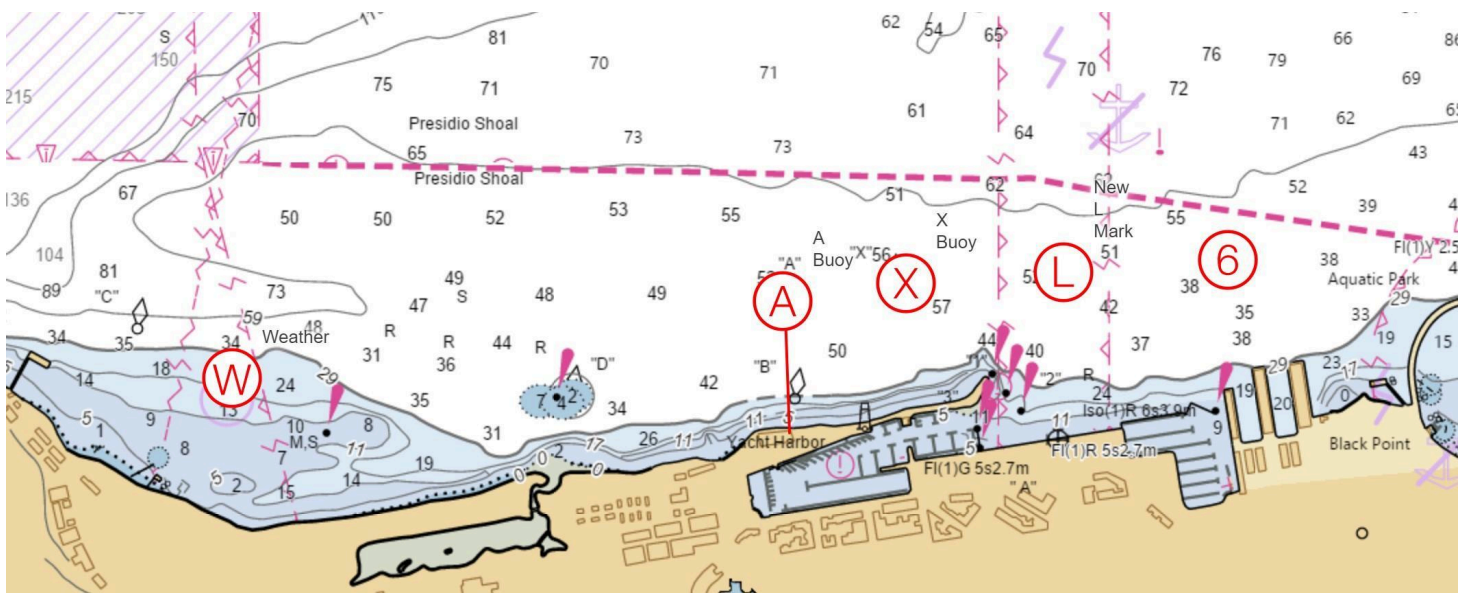
## All classes, except Folkboat

MARK	DESCRIPTION
<b>A</b>	Yellow sphere "A" approx. 400 yds north of StFYC Race Deck
<b>G</b>	leeward gate: 2 Red inflatable Cones to windward of the starting/finishing line.
<b>W</b>	Red inflatable cone set as a windward mark
<b>Wo</b>	Red inflatable cone set as an offset mark to mark W
<b>1</b>	Yellow inflatable tetrahedron set 0.40nm @ 312° M from Anita Rock
<b>6</b>	Yellow Can buoy approx. 0.41nm @ 54° M from Q Red "2" Priv near Ft. Mason
<b>7g</b>	<b>Gate:</b> Red buoy "2" FI R 6s (P) approx. 1.30nm @ 57° M from Alcatraz Light FI 5s 214ft 20M & Yellow inflatable cone (S) set to the south
<b>8</b>	Red buoy "4" FI R 4s Horn approx. 1.13nm @ 95° M from Point Blunt
<b>9</b>	Yellow inflatable cone approx. 0.30nm @ 115° M from Red/Green buoy "HR" 1 FI (2+1) R 6s
<b>12</b>	Little Harding Rock [G "1" FI G4s]
<b>15</b>	Large lighted yellow column buoy "Hank Eason" approx 0.5 nm, approx 37°50.462N - 122°28.000W
<b>16</b>	Yellow Can buoy "Blackaller" 0.48nm @ 83° M from Fort Point
<b>18g</b>	<b>Gate:</b> Green/Red buoy "BR" FI (2+1) G 6s Bell at Blossom Rock (P) & Yellow inflatable cone (S) set to the south of BR
<b>19</b>	Yellow inflatable cone approx. 0.40nm @ 056° M from Pt. Diablo Light
<b>21g</b>	<b>Gate:</b> Green Buoy "1" FI G 6s 0.70nm (P) approx 0.72nm at 47° M from Alcatraz Light FI 5s 214ft 20M & Yellow inflatable cone (S) set to the south.





## ADDENDUM 'CF - Course Illustrations' Folkboat class only



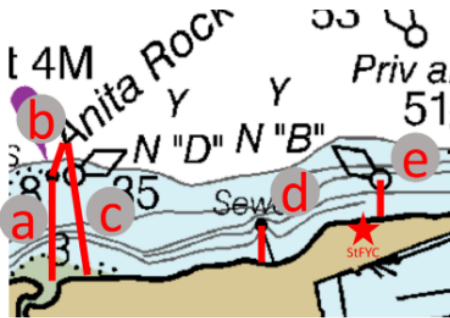
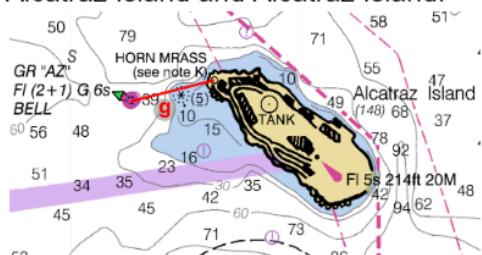
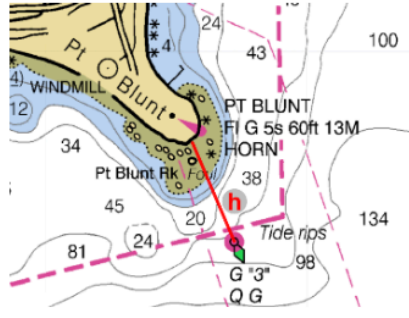
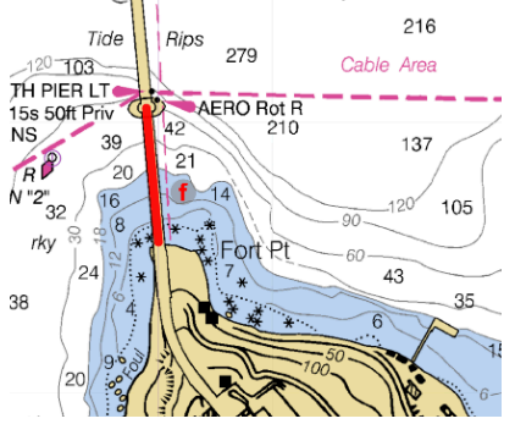
MARK	DESCRIPTION	APPROX COORD		NOTES
		Decimal	Deg. Min.	
A	Yellow sphere "A" outer StFYC Start/Finish Mark or inflatable orange ball	37.8106 -122.4470	37deg 48.636' -122deg 26.82"	Start pin and passing mark
B	Yellow sphere "B" inner StFYC Start/Finish Mark	37.8082 -122.4464	37deg 48.492' -122deg 26.784'	Defines an obstruction
X	Yellow can "X" North of Golden Gate Yacht Club	37.8111 -122.4432	37deg 48.666' -122deg 26.592'	Rounding mark
W	Red inflatable cone set as a windward mark	37.8088 -122.4637	37deg 48.528' -122deg 27.822'	Rounding mark
Wo	Red inflatable cone set as an offset to windward mark			Rounding mark
6	Yellow can 200 yards North of Fort Mason Piers	37.8112 -122.4320	37deg 48.672' -122deg 25.92'	Rounding mark
L	Yellow inflatable shape set ½ way between Mark X and Mark 6	37.8112 122.4374	37deg 48.672' -122deg 26.244'	Rounding mark

<b>Signal flag will indicate whether rounding marks are to be left to port (red) or starboard (green).</b>		
COURSE	ROUNDING ORDER	NOTES
<b>Courses using X Buoy for Leeward Mark</b>		
1	Start – W+Wo – X – Finish	One Lap to X, finish upwind
2	Start – W+Wo – X – W+Wo – Finish	One and ½ Lap, finish downwind
3	Start – W+Wo – X – W+Wo – A to Port – X – Finish	Two laps, finish upwind

4	Start – W+Wo – X – W+Wo – A to Port– X – W+Wo – Finish	Two & 1/2 laps, finish downwind
<b>Courses using L Buoy for Leeward Mark</b>		
5	Start – W+Wo – L – Finish	One Lap to L, finish upwind
6	Start – W+Wo – L – W+Wo – Finis	One and 1/2 Lap, finish downwind
7	Start – W+Wo – L – W+Wo – A to Port – L – Finish	Two laps to L, finish upwind
<b>Courses using 6 Buoy for Leeward Mark</b>		
8	Start – W+Wo – 6 – Finish	One Lap to 6, finish upwind
9	Start – W+Wo – 6 – W+Wo – Finish	One and 1/2f Lap, finish downwind
10	Start – W+Wo – 6 – W+Wo – A to port – 6 – Finish	Two laps to 6, finish upwind

**Addendum 'AREAS THAT ARE OBSTRUCTIONS'**

Unless otherwise specified in the SI, any line bounded by the following points will be designated as an obstruction. Boats are prohibited from crossing any of these lines during the race.

	<p>g. The Green/Red Bell Buoy off the West end of Alcatraz Island and Alcatraz Island.</p> 
<p>a. Anita Rock Light located approximately 0.30nm west of StFYC ("Anita Rock" Q 20ft 5M) and the closest point ashore;</p>	<p>h. The Green Buoy (G"3") South of Point Blunt-Angel Island and the closest point ashore.</p> 
<p>b. Anita Rock Light and "ARo" (located approximately 45 yards at 350 degrees from Anita Rock Light).</p>	
<p>c. Yellow buoy "ARo" as defined above and the closest point ashore.</p>	<p>i. The northeastern most corner of Pier 45 and Fl R 2.5s "2" on the easternmost end of the Aquatic Park breakwater.</p>
<p>d. The "H" Beam piling and the closest point ashore (located approximately 200 yards west of StFYC)</p>	<p>j. If set: A white temporary buoy off of Pier 43-1/2 and the end of Pier 43-1/2.</p>
<p>e. StFYC inner mark "B" and the closest point ashore.</p>	<p>k. If set: The white temporary buoy off of Pier 39 mentioned in (j) and the white temporary buoy off of Pier 43-1/2 mentioned in (l).</p>
<p>f. The South Tower of the Golden Gate Bridge and the closest point ashore.</p> 	<p>l. If set: A white temporary buoy off of Pier 39 and the end of Pier 39.</p> 