

# A2C LIGHTHOUSE CHALLENGE



Saturday, 24 August 2024

CO-ORGANIZING AUTHORITY  
Cambridge Yacht Club & Eastport Yacht Club

CBYRA Sanction #209

## SAILING INSTRUCTIONS

The notation “[NP]” in a rule means that a boat may not protest another boat for breaking that rule. This changes RRS 60.1(a).

### 1 RULES

The event shall be governed by the *rules* as defined in the *Racing Rules of Sailing* (RRS).

### 2 CHANGES TO THE SAILING INSTRUCTIONS

Any change to the Sailing Instructions (SIs) will be posted before 0800 on the day it will take effect, except that any change to the schedule of races will be posted by 2000 on the day before it will take effect.

### 3 COMMUNICATIONS

Race Committee (RC) intends to monitor and communicate with competitors on VHF radio channel 73 while on the water.

### 4 SIGNALS MADE ASHORE

- 4.1 Signals made ashore will be displayed from the Eastport Yacht Club (EYC) flagpole, located on the waterside of the clubhouse.
- 4.2 The RC may announce signals posted ashore on VHF channel 73, and/or text message, and/or email. This announcement, lack thereof or contents thereof shall not be grounds for Redress or Protest. This changes RRS 62.1(a).
- 4.3 When flag AP is displayed ashore, “1 minute” is replaced with “not less than 60 minutes” in Race Signals AP.

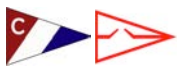
### 5 CLASS FLAGS & ORDER OF START

- 5.1 Class flags will not be required for this event.
- 5.2 The start order and Warning signal for each class will be posted to the Official Notice Board before 2000 on Friday, 23 August 2024.

### 6 MANDATORY CHECK-IN

- 6.1 The RC shall use a separate check-in vessel. The vessel shall fly a solid yellow flag and will be anchored in the vicinity of “GR C “SR.””
- 6.2 [DP] [NP] Each boat shall pass close astern of the check-in vessel and hail her sail number until acknowledged by a return hail from the check-in vessel.
- 6.3 The first sentence of RRS 28.1 is modified to “A boat shall check in, *start*, *sail the course* and then *finish*.” The rest of the rule is unchanged. This changes RRS 28.1 and A5.1.





## A2C LIGHTHOUSE CHALLENGE SAILING INSTRUCTIONS



### 7 COURSE

The diagram in Figure 1 shows the course, the order in which the marks are to be passed, and the side on which each mark is to be left.

### 8 THE START

- 8.1 The RC Signal Vessel shall establish a starting line approximately 0.25 nm south of "GR C "SR.""
- 8.2 The starting line shall be between a staff displaying an orange flag on the RC Signal Vessel at the starboard end and either a staff displaying an orange flag on an anchored RC mark vessel or the course side of a green tetrahedron at the port end.
- 8.3 If light conditions warrant such a move, the RC Signal Vessel may display code flag "L" in accordance with RRS Race Signals and proceed south to an alternative starting mark at either "G "1" FI G 4s" or "G "85A."" In this case, at the RC's discretion, the port end of the starting line may be either the green tetrahedron or the government buoy.
- 8.4 A boat starting more than ten (10) minutes after the starting signal of the last class shall be scored Did Not Start (DNS). This changes RRS A4.

### 9 RECALLS

- 9.1 If any part of a boat's hull is on the course side of the starting line at her starting signal and she is identified, the RC will attempt to hail her sail number. Failure to hail her number, failure to hear such a hail, or the order in which boats are hailed will not be grounds for a request for redress. This changes RRS 62.1(a).
- 9.2 If a general recall is made, classes which have not been recalled shall be started as though the general recall(s) had not been made. This modifies RRS 29.2. Recalled classes shall start in the order they were recalled, after the last scheduled start. This modifies RRS 29.2.

### 10 SHORTENING THE COURSE

- 10.1 RC may shorten the course only at any of the following marks and signaled in accordance with RRS 32.1.  
G "9" FI G 4s      R "10" FI R 2.5s      R "14" FI R 2.5s      G ""21" FI G 4s
- 10.2 RC may shorten the course for some but not all classes. If this is the case, the classes to be shortened will be identified by the Warning signal noted in SI 5.2.

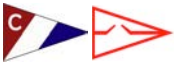
### 11 THE FINISH

- 11.1 The finishing line shall be between a staff displaying a blue flag on the RC Finish Vessel on the port side and the course side of the Cambridge Yacht Club (CYC) flagpole on the starboard side.
- 11.2 The RC Finish Vessel intends to be on station beginning at approximately 1200 on Saturday, 24 August 2024, until 1800 on Saturday, 24 August 2024, or when all competitors have been accounted for (finished, retired, etc.), whichever occurs first.
- 11.3 If the RC Finish Vessel is not on station, a boat shall take her finish time when she passes the CYC flagpole within one hundred (100) yards of the CYC dock and the flagpole bears 225° magnetic. Boats recording their own finish shall report their finish time to the RC as soon as practical after finishing by contacting the Principal Race Officer by leaving a message on the EYC cell phone, (410) 271-7193, or via email at [race.committee@eastportyc.org](mailto:race.committee@eastportyc.org).

### 12 HEARING REQUESTS

- 12.1 Scoring Inquiries shall be submitted within the Protest Time Limit.
  - a. Scoring inquiries shall be submitted via the "Online Scoring Inquiry Filing" link found on the Yacht Scoring event main page.
  - b. Scoring inquiries may be resolved via teleconference or video conference.
- 12.2 Protests and Requests for Redress shall be submitted within the Protest Time Limit. Electronic submittal shall be used and is available via the "Owner's Corner" link found on the Yacht Scoring event main page or via email to [race.committee@eastportyc.org](mailto:race.committee@eastportyc.org). A diagram of the incident, if applicable, cannot be submitted via Yacht Scoring, and should be scanned and emailed to the RC at [race.committee@eastportyc.org](mailto:race.committee@eastportyc.org) prior to the hearing.





## A2C LIGHTHOUSE CHALLENGE SAILING INSTRUCTIONS



- 12.3 The alternative penalty acceptance form (RRS Appendix V2) will be available via the “Documents & Forms” link found on the Yacht Scoring event main page. The form may also be emailed to the RC at [race.committee@eastportyc.org](mailto:race.committee@eastportyc.org).
- 12.4 The protest time limit is sixty (60) minutes after the protesting boat’s finish time. This posting constitutes the notification required in RRS 61.3. The time limit for a Request for Redress based on an incident in the racing area shall be the Protest Time Limit. This changes RRS 62.2.
- 12.5 The Protest Committee may schedule a hearing prior to the Protest Time Limit if the parties and witnesses are available and have had sufficient time to prepare. The time and location of each protest hearing will be posted on the Official Notice Board; if a hearing will be held virtually, the link will be provided via email to each party. For virtual hearings, parties and witnesses are encouraged to download and review the *Online Hearing Procedure Guidelines*, available via the “Documents & Forms” link found on the Yacht Scoring event main page.

### 13 SAFETY REGULATIONS

- 13.1 [DP] [NP] A boat that retires from a race shall notify RC as soon as possible either by hail or VHF channel 73, or the EYC cell phone [(410) 271-7193], or email [[race.committee@eastportyc.org](mailto:race.committee@eastportyc.org)]. A voicemail message shall include the approximate time of the message, the skipper’s name, boat name, and sail number.
- 13.2 [DP] [NP] A boat shall not exercise right of way, cross in proximity to, or interfere with reasonable transit of the race area by commercial traffic of any kind. Boats must take evasive action well in advance of a potentially dangerous situation. The US Coast Guard, ship captains, and bay pilots have been encouraged to report any incident they observe.
- 13.3 [NP] A boat without way may use any means of propulsion to avoid underway commercial traffic, provided:
  - (a) the boat does not gain an advantage;
  - (b) using propulsion is the only means of avoiding the commercial traffic; and,
  - (c) the boat submits a report (in writing or by email) to the RC by the protest time limit that describes the incident and the boat’s actions.
- 13.4 [NP] The RC or Protest Committee may protest a boat for SIs 13.2 and/or 13.3 based on information received from any source. The protest time limit does not apply. This changes RRS 60.2, 60.3, and 61.3.

### 14 ENVIRONMENT

[NP] This is a Clean Regatta. All competitors are encouraged to use multi-use water bottles instead of disposable water bottles, and to recycle whenever possible.



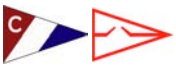
THE TILE  
AND STONE  
CENTER



Distributors of Fine Ceramic Tile and Stone  
— [tileandstonecenter.com](http://tileandstonecenter.com) —







# A2C LIGHTHOUSE CHALLENGE SAILING INSTRUCTIONS

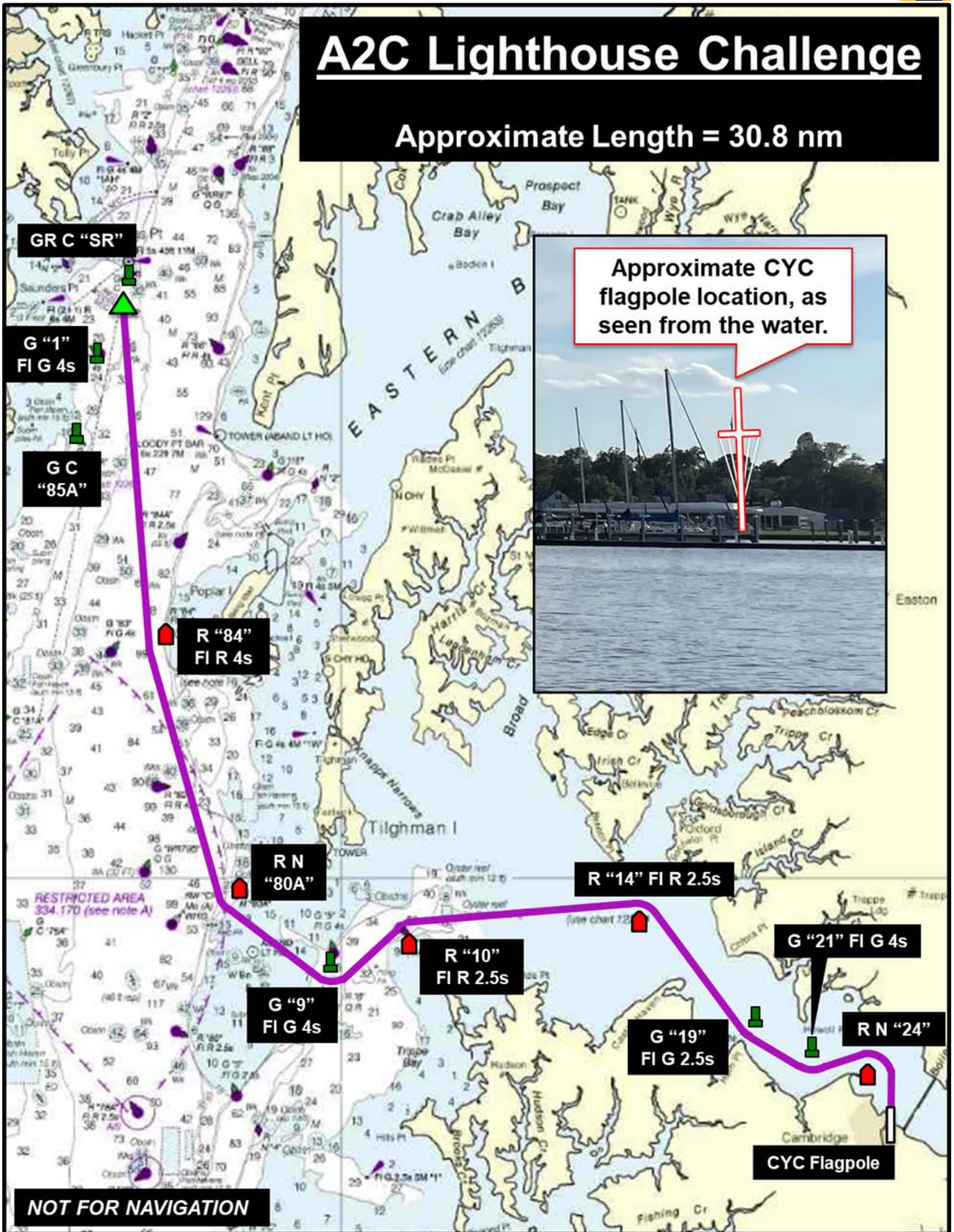


Figure 1. A2C Lighthouse Challenge Course Diagram

