

# MARYLAND CURES CANCER REGATTA



Saturday, 15 June 2024

ORGANIZING AUTHORITY

Eastport Yacht Club

CBYRA Sanction #308

## SAILING INSTRUCTIONS

### Annapolis Fleet – Government Marks Course

The notation “[NP]” in a rule means that a boat may not protest another boat for breaking that rule. This changes RRS 60.1(a).

#### 1 RULES

The event shall be governed by the *rules* as defined in the *Racing Rules of Sailing* (RRS).

#### 2 CHANGES TO SAILING INSTRUCTIONS

Any change to the Sailing Instructions (SIs) will be posted before 0800 on the day it will take effect, except that any change to the schedule of races will be posted by 2000 on the day before it will take effect.

#### 3 COMMUNICATIONS

Race Committee (RC) intends to monitor and communicate with competitors on VHF radio channel 71 while on the water.

#### 4 SIGNALS MADE ASHORE

- 4.1 Signals made ashore will be displayed from the Eastport Yacht Club (EYC) flagpole, located on the waterside of the clubhouse.
- 4.2 RC may announce signals posted ashore on VHF channel 71, and/or text message, and/or email. This announcement, lack thereof or contents thereof shall not be grounds for Redress or Protest. This changes RRS 41 and 62.1(a).
- 4.3 When flag AP is displayed ashore, “1 minute” is replaced with “not less than 60 minutes” in Race Signals AP.

#### 5 SCHEDULE OF RACES

The schedule of events is:

Fri, 14 June	1700	Course to be sailed and individual start times for the pursuit race posted
Sat, 15 June	1000	RC Signal Vessel arrives at “R “2” FI R 2.5s”
	1100	Intended Warning Signal for the first class
	1400	No Warning Signal after this time





**MARYLAND CURES CANCER REGATTA**  
**SAILING INSTRUCTIONS – Annapolis Fleet, Government Marks Course**



**6 WARNING FLAGS AND ORDER OF START**

6.1 Boats shall display from the backstay their class flag.

Class	Class Flag	Warning Signal
Cure Cruising	none required	EYC Burgee
PHRF N	Pennant "5"	
PHRF Cruiser – Spinnaker	none required	
PHRF Cruiser – Non-Spinnaker	none required	
Cal 25	Flag "T"	
Jobson Spinnaker	none required	
Heintz Non-Spinnaker	none required	Pennant "3"
CRCA	Green	

6.2 Competitors in the pursuit race (Cure Cruising, PHRF N, PHRF Cruiser – Spinnaker, PHRF Cruiser – Non-Spinnaker, Jobson Spinnaker, and Heintz Non-Spinnaker) will be started first. RC will perform a separate start sequence for the CRCA class.

6.3 If a class is not present, its start will be omitted and the next class will start in that place.

**7 CHECK IN**

[DP] [NP] Boats shall not attempt to check in with the RC Signal Vessel.

**8 THE COURSE**

8.1 All classes will sail the same course, which will be posted in accordance with NoR 6.

8.2 Figure 1 identifies the RC may use for the course.

8.3 [DP] A boat shall not cross the finish line until she is completing the last leg of the course. When the finishing line is closed it is an obstruction. A boat that breaks this rule shall not correct her error; however, she will be exonerated if she takes a One-Turn Penalty (see RRS 44.2). This changes RRS 28.1.

**9 MARKS**

9.1 Marks that may be used, and their approximate locations, are identified in Figure 1.

9.2 Marks shall be rounded in the order defined in the course that is posted in accordance with SI 5, reading from left to right. Marks designated in "RED" shall be rounded to port; marks designated in "GREEN" shall be rounded to starboard.

**10 THE START**

10.1 The starting line will be between a staff displaying an orange flag on the RC Signal Vessel at the starboard end, and the course side of "R "2" FI R 2.5s" at the port end.

10.2 CURE CRUISING, PHRF N, PHRF CRUISER – SPINNAKER, PHRF CRUISER – NON-SPINNAKER, JOBSON SPINNAKER, & HEINTZ NON-SPINNAKER Classes

10.2.1 This shall be a pursuit race with a reverse PHRF Time over Distance (ToD) starting order. The boat with the slowest (highest) rating shall start first and the fastest (lowest) rating shall start last.

10.2.2 The RC shall signal the starting sequence as follows. This changes RRS 26.

TIME	SIGNAL	FLAG / SOUND
1100	Warning signal for all boats	Raise large EYC burgee with 1 sound
1101	Preparatory signal for the first boat to start	Raise code flag "P" with 1 sound
1104		Lower code flag "P" with a long sound
1105	Starting signal for the first boat to start	Lower large EYC burgee & briefly raise number pennant "0" with 1 sound
Each Subsequent Start Tme	Starting signal for remaining boats	Briefly raise number pennant "0" with 1 sound





# MARYLAND CURES CANCER REGATTA

## SAILING INSTRUCTIONS – Annapolis Fleet, Government Marks Course



- 10.2.3 A boat's individual preparatory signal is four (4) minutes prior to her individual scheduled start. After the first boat has started, there will be no visual signal or sound for any subsequent preparatory signal. This changes RRS 26.
- 10.2.4 The start times for all boats shall be based on their PHRF ToD Circular Random handicap. The race shall use GPS time synchronization. The RC will attempt to broadcast a five (5) second countdown for each starting time on VHF channel 71. Failure of the RC to announce a start time will not be grounds for redress. This changes RRS 41 and 62.1(a).
- 10.2.5 [DP] After the Warning signal for the first start, boats shall stay clear of the starting area until four (4) minutes before their scheduled starting time.
- 10.2.6 In the event a postponement is signaled on the water, the RC shall announce the revised start times on VHF channel 71 before lowering the postponement flag.
- 10.3 CRCA Class
- 10.3.1 The RC will attempt to signal the CRCA RACER & CRUISER classes start sequence as soon as possible after completing the ORC RACER/CRUISER & CRUISER race start. The RC shall signal a wakeup call with multiple sounds, approximately one (1) minute prior to the Warning signal.
- 10.3.2 The start shall be in accordance with RRS 26.

## 11 RECALLS

- 11.1 CURE CRUISING, PHRF N, PHRF CRUISER – SPINNAKER, PHRF CRUISER – NON-SPINNAKER, JOBSON SPINNAKER, & HEINTZ NON-SPINNAKER Classes
- 11.1.1 If any part of a boat's hull, crew or equipment is on the course side of the starting line at her starting signal and she is identified, she shall be considered On Course Side (OCS). She shall not attempt to clear herself, start, or restart, and shall, instead, sail to the first mark. The RC will attempt to broadcast her sail number on VHF channel 71. Flag X will not be used. This changes RRS 29.1.
- 11.1.2 [DP] [NP] A boat that is scored OCS shall, without a hearing, be penalized by having ten (10) minutes plus the amount of time that she was over early added to her elapsed time. In RRS 28, the word "start" is replaced with "start or take a penalty in accordance with SI 11.1.2." This changes RRS 28, 63.1, A4, and A5.
- 11.2 For the CRCA class, the RC intends to hail on VHF channel 71 after the starting signal the sail number(s) of boats that are OCS. The failure of any boat to hear the hail, the timeliness of the hail of OCS boats, failure to hail any boats, and the order of the boats in the hail shall not be grounds for granting redress. This changes RRS 41 and 62.1(a).

## 12 CHANGE OF THE NEXT LEG OF THE COURSE

A change of the next leg of the course is not permitted.

## 13 THE FINISH

The finishing line shall be between the staff or halyard on the RC Signal Vessel displaying a blue flag and the course side of the finishing mark.

## 14 TIME LIMIT

- 14.1 The race time limit is 1600 hours.
- 14.2 If a boat in a class has sailed the course within the race time limit, all other boats in that class will be scored. Those that finished within the time limit will be scored in their finishing order. Those who have not finished within the time limit will be scored Time Limit Expired (TLE). This changes RRS 35, A5.1, A5.2, and A10.





# MARYLAND CURES CANCER REGATTA

## SAILING INSTRUCTIONS – Annapolis Fleet, Government Marks Course



### 15 HEARING REQUESTS

- 15.1 Scoring Inquiries shall be submitted within the Protest Time Limit.
- Scoring inquiries shall be submitted via the “Online Scoring Inquiry Filing” link found on the Yacht Scoring event main page.
  - Scoring inquiries may be resolved via teleconference or video conference.
- 15.2 Protests and Requests for Redress shall be submitted within the Protest Time Limit. Electronic submittal shall be used and is available via the “Owner’s Corner” link found on the Yacht Scoring event main page or via email to [race.committee@eastportyc.org](mailto:race.committee@eastportyc.org). A diagram of the incident, if applicable, cannot be submitted via Yacht Scoring, and should be scanned and emailed to the RC at [race.committee@eastportyc.org](mailto:race.committee@eastportyc.org) prior to the hearing.
- 15.3 The alternative penalty acceptance form (RRS Appendix V2) will be available via the “Documents & Forms” link found on the Yacht Scoring event main page. The form may also be emailed to the RC at [race.committee@eastportyc.org](mailto:race.committee@eastportyc.org).
- 15.4 The protest time limit is sixty (60), minutes after the RC Signal Vessel dock time. This posting constitutes the notification required in RRS 61.3. The time limit for a Request for Redress based on an incident in the racing area shall be the Protest Time Limit. This changes RRS 62.2.
- 15.5 The Protest Committee may schedule a hearing prior to the Protest Time Limit if the parties and witnesses are available and have had sufficient time to prepare. The time and location of each protest hearing will be posted on the Official Notice Board; if a hearing will be held virtually, the link will be provided via email to each party. For virtual hearings, parties and witnesses are encouraged to download and review the *Online Hearing Procedure Guidelines*, available via the “Documents & Forms” link found on the Yacht Scoring event main page.

### 16 SCORING

- 16.1 One (1) race is scheduled.
- 16.2 A boat scored TLE shall be scored points for the finishing place two (2) more than the points scored by the last boat that finished within the time limit. This changes RRS 35, A5.1, A5.2, and A10.

### 17 SAFETY REGULATIONS

- 17.1 [DP] [NP] A boat that retires from a race shall notify RC as soon as possible either by hail or VHF channel 71, or the EYC cell phone [(410) 271-7193], or email [[race.committee@eastportyc.org](mailto:race.committee@eastportyc.org)]. A voicemail message shall include the approximate time of the message, the skipper’s name, boat name, and sail number.
- 17.2 [DP] [NP] A boat shall not exercise right of way, cross in proximity to, or interfere with reasonable transit of the race area by commercial traffic of any kind. Boats must take evasive action well in advance of a potentially dangerous situation. The US Coast Guard, ship captains, and bay pilots have been encouraged to report any incident they observe.
- 17.3 [NP] A boat without way may use any means of propulsion to avoid underway commercial traffic, provided:
- the boat does not gain an advantage;
  - using propulsion is the only means of avoiding the commercial traffic; and,
  - the boat submits a report (in writing or by email) to the RC by the protest time limit that describes the incident and the boat’s actions.
- 17.4 [NP] The RC or Protest Committee may protest a boat for SIs 17.2 and/or 17.3 based on information received from any source. The protest time limit does not apply. This changes RRS 60.2, 60.3, and 61.3.

### 18 ENVIRONMENT

[NP] This is a Clean Regatta. All competitors are encouraged to use multi-use water bottles instead of disposable water bottles, and to recycle whenever possible.





MARYLAND CURES CANCER REGATTA  
SAILING INSTRUCTIONS – Annapolis Fleet, Government Marks Course

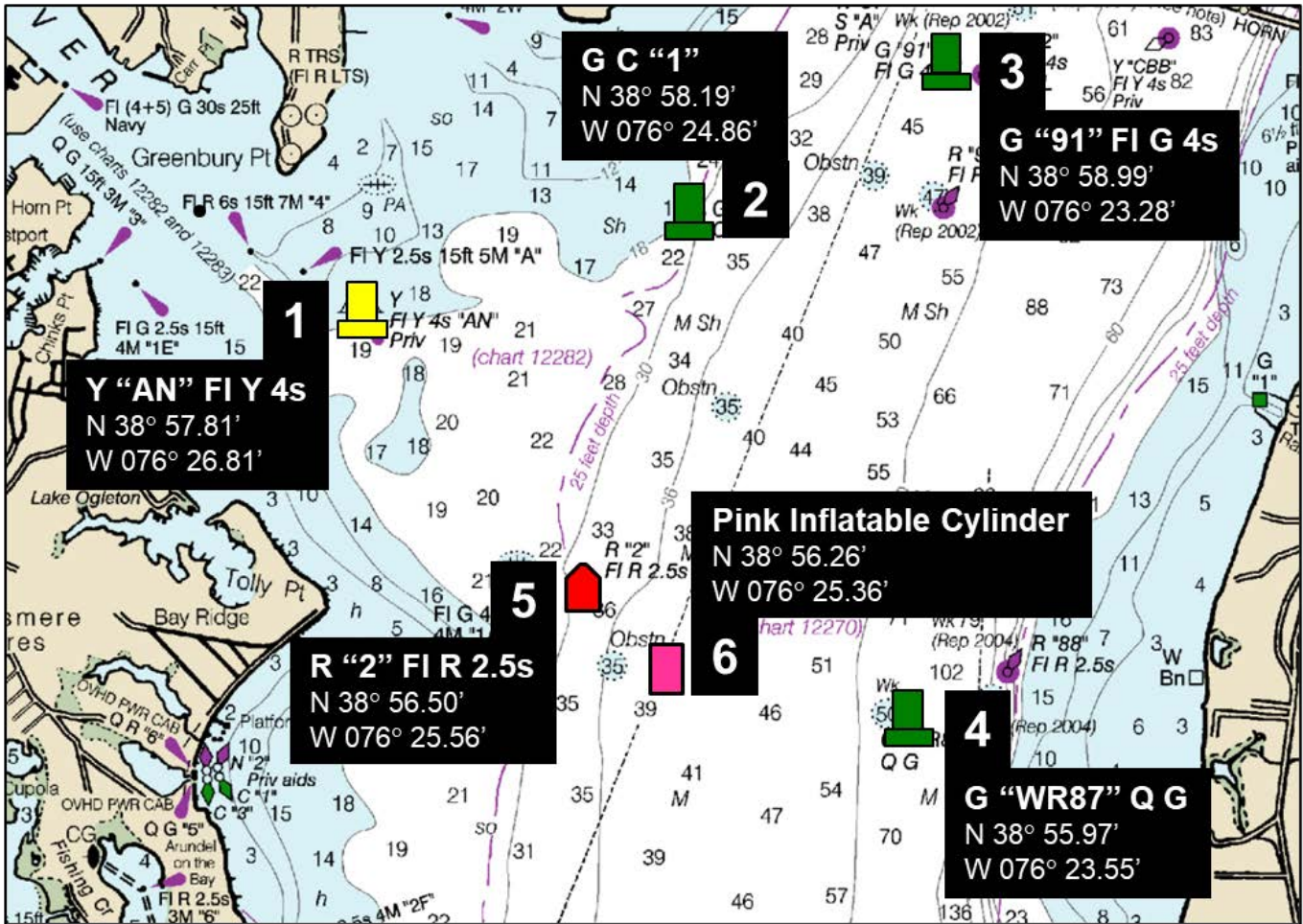


Figure 1. Available Marks for the Government Marks Course



IGM&B Holdings, Inc.  
(301) 331-8329



eastportyc\_race

@eastportyc\_race

