



MARYLAND CURES CANCER REGATTA



Saturday, 15 June 2024

ORGANIZING AUTHORITY
Eastport Yacht Club

Assist by:
Maryland Yacht Club
Rock Creek Racing Association

CBYRA Sanction #308

SAILING INSTRUCTIONS

Rock Creek Fleet

The notation “[NP]” in a rule means that a boat may not protest another boat for breaking that rule. This changes RRS 60.1(a).

1 RULES

The event shall be governed by the *rules* as defined in the *Racing Rules of Sailing* (RRS).

2 CHANGES TO SAILING INSTRUCTIONS

Any change to the Sailing Instructions (SIs) will be posted before 0800 on the day it will take effect, except that any change to the schedule of races will be posted by 2000 on the day before it will take effect.

3 COMMUNICATIONS

Race Committee (RC) intends to monitor and communicate with competitors on VHF radio channel 71 while on the water.

4 SCHEDULE OF RACES

The schedule of events is:

Sat, 15 June	0930	Rendezvous in the vicinity of “G “23” Fl G 4s”
	1000	Intended Warning Signal for the first class
	1200	No Warning Signal after this time

5 WARNING FLAGS AND ORDER OF START

For the first race, the RC shall start the following classes in the order outlined below. If a class is not present, its start will be omitted and the next class will start in that place.

Class Start Order	Warning Flag
PHRF Spinnaker	Pennant “1”
PHRF Non-Spinnaker	Pennant “2”
CRCA Racer	Green Flag
CRCA Cruiser	White Flag





MARYLAND CURES CANCER REGATTA SAILING INSTRUCTIONS – Rock Creek Fleet



6 CHECK IN

[DP] [NP] Prior to starting, all boats shall check in by sailing past the stern of the RC Signal Vessel on starboard tack, hail their sail number, and be acknowledged by the RC.

7 THE COURSE

Figure 1 shows the course, the order in which the marks are to be passed, and the side on which each mark is to be left.

8 THE START

- 8.1 The starting line will be between a staff displaying a yellow flag on the RC Signal Vessel at the starboard end and “G “23” FI G 4s” at the port end.
- 8.2 When the RC Signal Vessel is in the vicinity of “G “23” FI G 4s” they may display code flag “L” in accordance with RRS Race Signals and proceed to an alternative starting mark at either “G “21” Q G” or “G “19” FI G 4s.”

9 RECALLS

If any part of a boat’s hull is on the course side of the starting line at her starting signal and she is identified, the RC will attempt to hail her sail number. Failure to hail her number, failure of her to hear such a hail, or the order in which boats are hailed will not be grounds for a request for redress. This changes RRS 62.1(a).

10 THE FINISH

- 10.1 The finishing line is between a staff displaying a blue flag on the RC Finish Vessel and the course side of Severn River lighted buoy “R “2” FI R 2.5s.”
- 10.2 If the RC Finish Vessel is not on station, a boat shall take her finish time when she passes Severn River lighted buoy “R “2” FI R 2.5s” within one hundred (100) yards and the mark bears 085° degrees magnetic. Boats recording their own finish shall report their finish time to the RC as soon as practical after finishing by contacting the Principal Race Officer by leaving a message on the EYC cell phone, (410) 271-7193, or via email at race.committee@eastportyc.org.

11 RACE TIME LIMIT

- 11.1 The race time limit is 1600.
- 11.2 Boats that have not finished by the race time limit will be scored Time Limit Expired (TLE). This changes RRS 35, A5.1, A5.2, and A10.

12 HEARING REQUESTS

- 12.1 Scoring Inquiries shall be submitted within the Protest Time Limit.
 - a. Scoring inquiries shall be submitted via the “Online Scoring Inquiry Filing” link found on the Yacht Scoring event main page.
 - b. Scoring inquiries may be resolved via teleconference or video conference.
- 12.2 Protests and Requests for Redress shall be submitted within the Protest Time Limit. Electronic submittal shall be used and is available via the “Owner’s Corner” link found on the Yacht Scoring event main page or via email to race.committee@eastportyc.org. A diagram of the incident, if applicable, cannot be submitted via Yacht Scoring, and should be scanned and emailed to the RC at race.committee@eastportyc.org prior to the hearing.
- 12.3 The alternative penalty acceptance form (RRS Appendix V2) will be available via the “Documents & Forms” link found on the Yacht Scoring event main page. The form may also be emailed to the RC at race.committee@eastportyc.org.
- 12.4 The protest time limit is sixty (60), minutes after the RC Finish Vessel dock time. This posting constitutes the notification required in RRS 61.3. The time limit for a Request for Redress based on an incident in the racing area shall be the Protest Time Limit. This changes RRS 62.2.
- 12.5 The Protest Committee may schedule a hearing prior to the Protest Time Limit if the parties and witnesses are available and have had sufficient time to prepare. The time and location of each





MARYLAND CURES CANCER REGATTA SAILING INSTRUCTIONS – Rock Creek Fleet



protest hearing will be posted on the Official Notice Board; if a hearing will be held virtually, the link will be provided via email to each party. For virtual hearings, parties and witnesses are encouraged to download and review the *Online Hearing Procedure Guidelines*, available via the “Documents & Forms” link found on the Yacht Scoring event main page.

13 SCORING

Boats to be scored TLE and not thereafter retiring, being penalized, or given redress will be scored points equal to the number of boats finishing within the race time limit plus two (2) points by the RC without a hearing. This changes RRS A5.2.

14 SAFETY REGULATIONS

- 14.1 [DP] [NP] A boat that retires from a race shall notify RC as soon as possible either by hail or VHF channel 71, or the EYC cell phone [(410) 271-7193], or email [race.committee@eastportyc.org]. A voicemail message shall include the approximate time of the message, the skipper’s name, boat name, and sail number.
- 14.2 [DP] [NP] A boat shall not exercise right of way, cross in proximity to, or interfere with reasonable transit of the race area by commercial traffic of any kind. Boats must take evasive action well in advance of a potentially dangerous situation. The US Coast Guard, ship captains, and bay pilots have been encouraged to report any incident they observe.
- 14.3 [NP] A boat without way may use any means of propulsion to avoid underway commercial traffic, provided:
 - (a) the boat does not gain an advantage;
 - (b) using propulsion is the only means of avoiding the commercial traffic; and,
 - (c) the boat submits a report (in writing or by email) to the RC by the protest time limit that describes the incident and the boat’s actions.
- 14.4 [NP] The RC or Protest Committee may protest a boat for SIs 14.2 and/or 14.3 based on information received from any source. The protest time limit does not apply. This changes RRS 60.2, 60.3, and 61.3.

15 ENVIRONMENT

[NP] This is a Clean Regatta. All competitors are encouraged to use multi-use water bottles instead of disposable water bottles, and to recycle whenever possible.





MARYLAND CURES CANCER REGATTA SAILING INSTRUCTIONS – Rock Creek Fleet

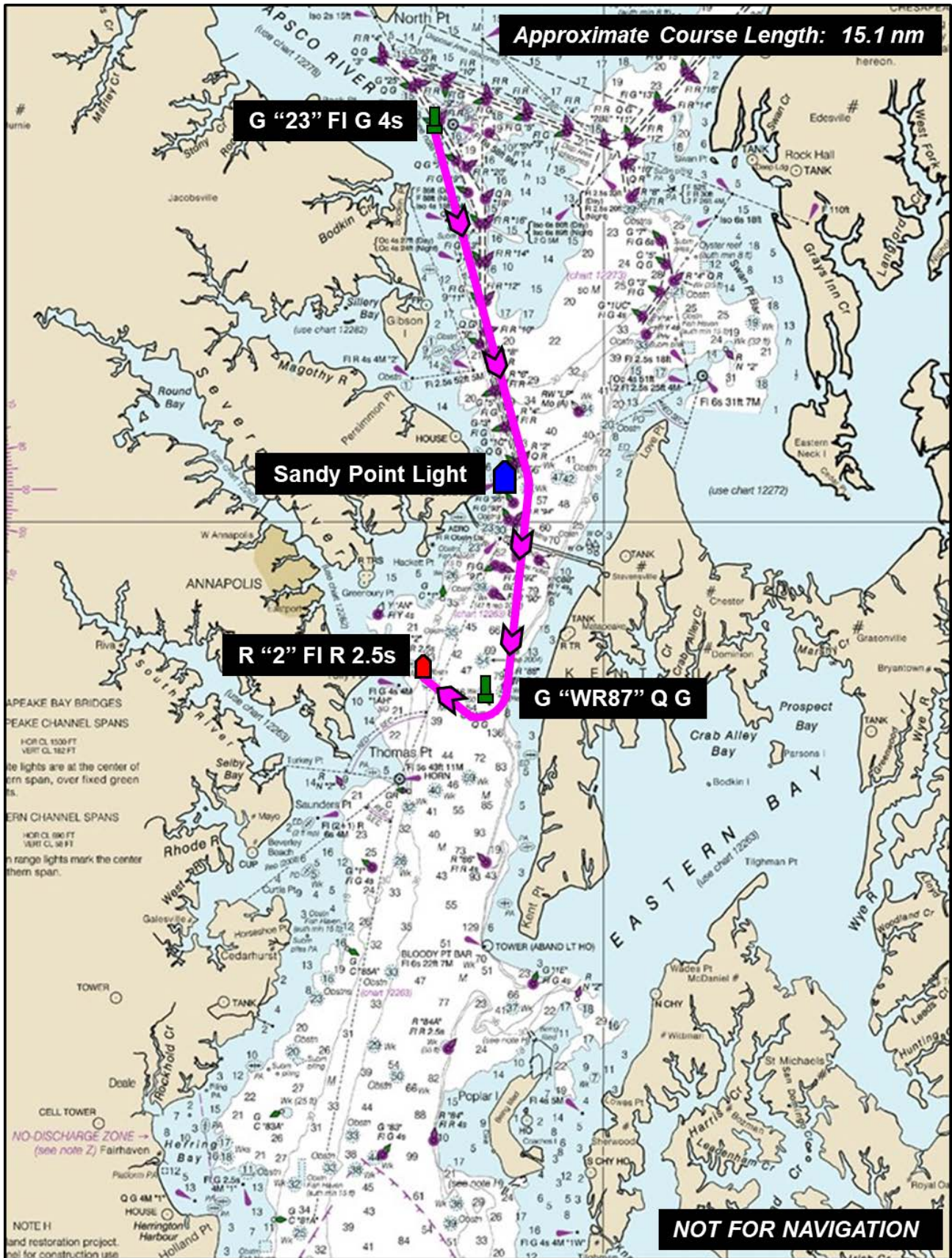


Figure 1. Course Diagram for the Rock Creek Fleet

