



# Rainbow Regatta Chicago

Saturday, July 6<sup>th</sup>, 2024

## SAILING INSTRUCTIONS (SIs) - AMENDMENT #1

1 **COURSE:** The following courses may be used.

1.1 **Course 1 (Short):** This course will be signaled using a Marker Board on the Committee boat with the number "1". The total distance of this course is 2.8 N. Mi.

Mark	Approx. Location	Rounding	Approx. Course	Approx. Distance
Start	41° 52.80' N 87° 34.46' W	-	-	-
Four Mile Crib	41° 52.36' N 87° 32.70' W	To Port	109° T	1.4 N. Mi.
Finish	41° 52.80' N 87° 34.46' W	-	289° T	1.4 N. Mi.

1.2 **Course 2 (Medium):** This course will be signaled using a Marker Board on the Committee boat with the number "2". The total distance of this course is 4.4 N. Mi.

Mark	Approx. Location	Rounding	Approx. Course	Approx. Distance
Start	41° 52.80' N 87° 34.46' W	-	-	-
Carter H Harrison Crib	41° 55.00' N 87° 34.35' W	To Port	003° T	2.2 N. Mi.
Finish	41° 52.80' N 87° 34.46' W	-	183° T	2.2 N. Mi.

- 1.3 **Course 3 (Long):** This course will be signaled using a Marker Board on the Committee boat with the number “3”. The total distance of this course is 6.5 N. Mi.

Mark	Approx. Location	Rounding	Approx. Course	Approx. Distance
Start	41° 52.80' N 87° 34.46' W	-	-	-
Four Mile Crib	41° 52.36' N 87° 32.70' W	To Port	109° T	1.4 N. Mi.
Carter H Harrison Crib	41° 55.00' N 87° 34.35' W	To Port	335° T	2.9 N. Mi.
Finish	41° 52.80' N 87° 34.46' W	-	182° T	2.2 N. Mi.

- 2 **MARKS:** For the Four Mile and Carter H Harrison cribs all guard marks for that crib are considered to be part of that mark for the course and must be left to the same side as the crib.
- 3 **THE START:** Item 10 of the Sailing Instructions is replaced with the following.
- 3.1 The starting line will be between a staff displaying an orange flag on the Race Committee signal boat and a yellow floating mark. The Race Committee signal boat must be left to starboard and the start mark must be left to port.
- 3.2 The Race Committee may set a guard mark off the stern of the signal boat. In such a case, boats shall not sail between the signal boat and the guard mark.
- 3.3 The start line will open at 1330 hours CDT, unless postponed by the Race Committee. A boat may start at any time within fifteen (15) minutes of the opening of the start line. The Race Committee will record the starting time of each boat and will attempt to provide a courtesy sound signal, e.g. whistle, for each recorded start. Failure of the Race Committee to produce a sound signal or failure to hear the signal will not be grounds for protest or redress.

3.4 Should the Race Committee postpone the opening of a start line, it will fly an “AP” Code Flag and may make Courtesy Broadcasts about that postponement or about when the start line will reopen via VHF 78.

3.5 **Start signals.** The following signals will be used for the start. An example of this starting sequence is available in Appendix A.1

3.5.1 The Race Committee will raise the “P” flag five (5) minutes before the start line opens.

3.5.2 The Race Committee will make five long sounds and raise an orange flag to signal the start line is open.

3.5.3 Fourteen (14) minutes after the start line opens, the Race Committee will make one long sound signifying the start line will close in one minute.

3.5.4 Fifteen (15) minutes after the start line opens, the Race Committee will make five long sounds to signal the start line is closed and the orange flag comes down. Boats may not start after that.

**4 CLASS FLAGS.** The following classes/sections will be used for scoring. Competitors are not required to display the class flag on their backstay as long as their section assignment is correct on the scratch sheet on YachtScoring.

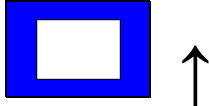
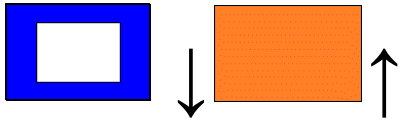

CLASS	CLASS FLAG	RATINGS
Colgate 26	2	-
JAM	Rainbow flag	All non-spinnaker
PHRF 1	1	All spinnaker

**5 THE FINISH:** The finish line will be between a staff displaying a blue flag on the Race Committee signal boat and a yellow floating mark, which should be left to starboard. The Race Committee signal boat shall be left to port. This changes item 11.1 of the Sailing Instructions.

For further information please contact [racing@jacksonparkyachtclub.org](mailto:racing@jacksonparkyachtclub.org)

### A.1 Example Starting Sequence

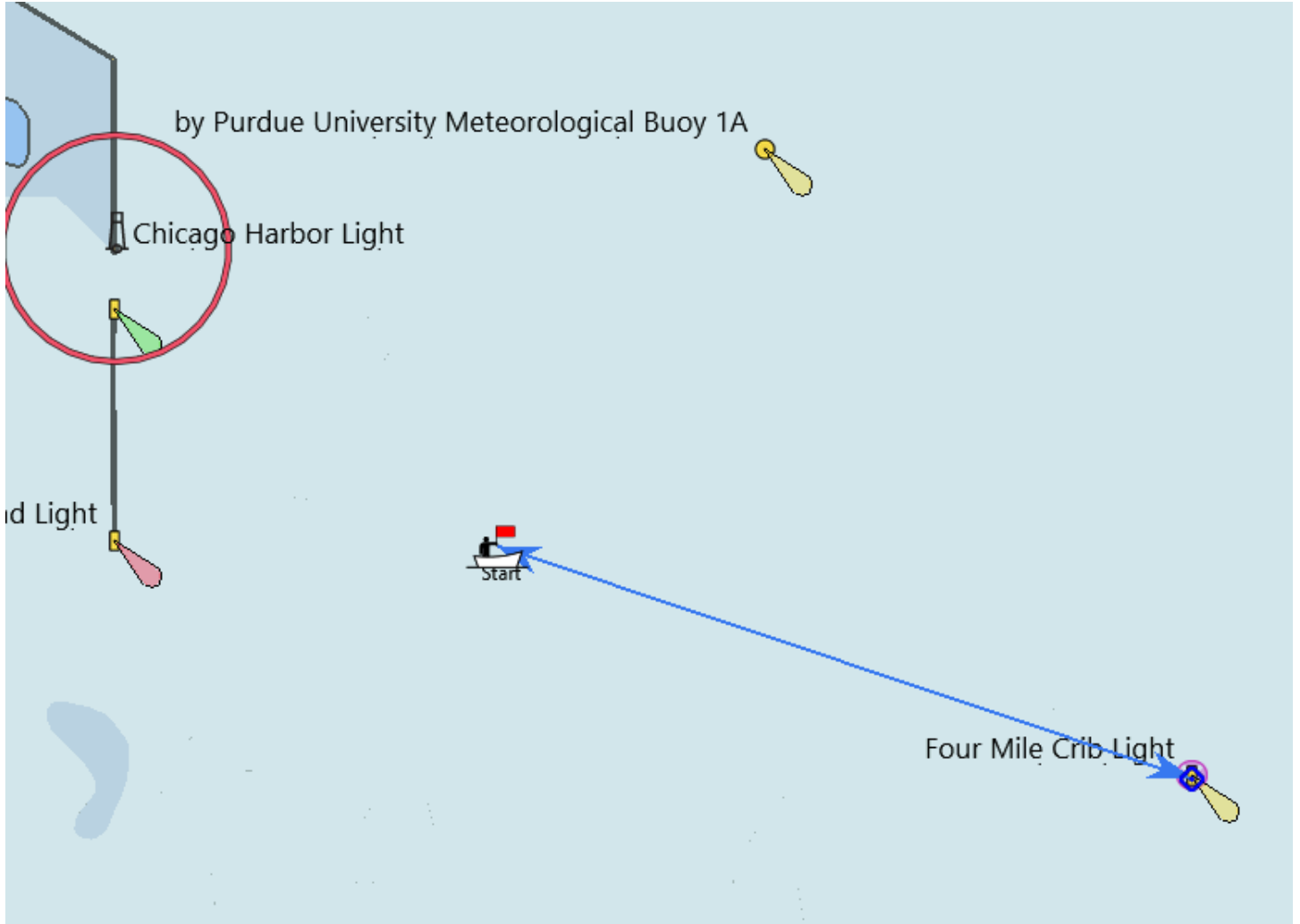
Please note, the times listed in this table may be subject to change to any postponements made by the Race Committee.

Time	Signals	Sounds	Description
13:25 (-5)	 ("P" flag up)	Short horn	Preparatory signal for start of the race. 5 minutes until the start line is open.
13:30 (0)	 ("P" flag down, orange flag up)	5 long sounds	The start line is open. Boats may start the race
13:44 (+14)	No change in visual signals	1 Long horn	1 minute before the start line closes
13:45 (+15)	 (orange flag down)	5 long sounds	The start line is closed. Any boats attempting to start after this time will be scored DNS.

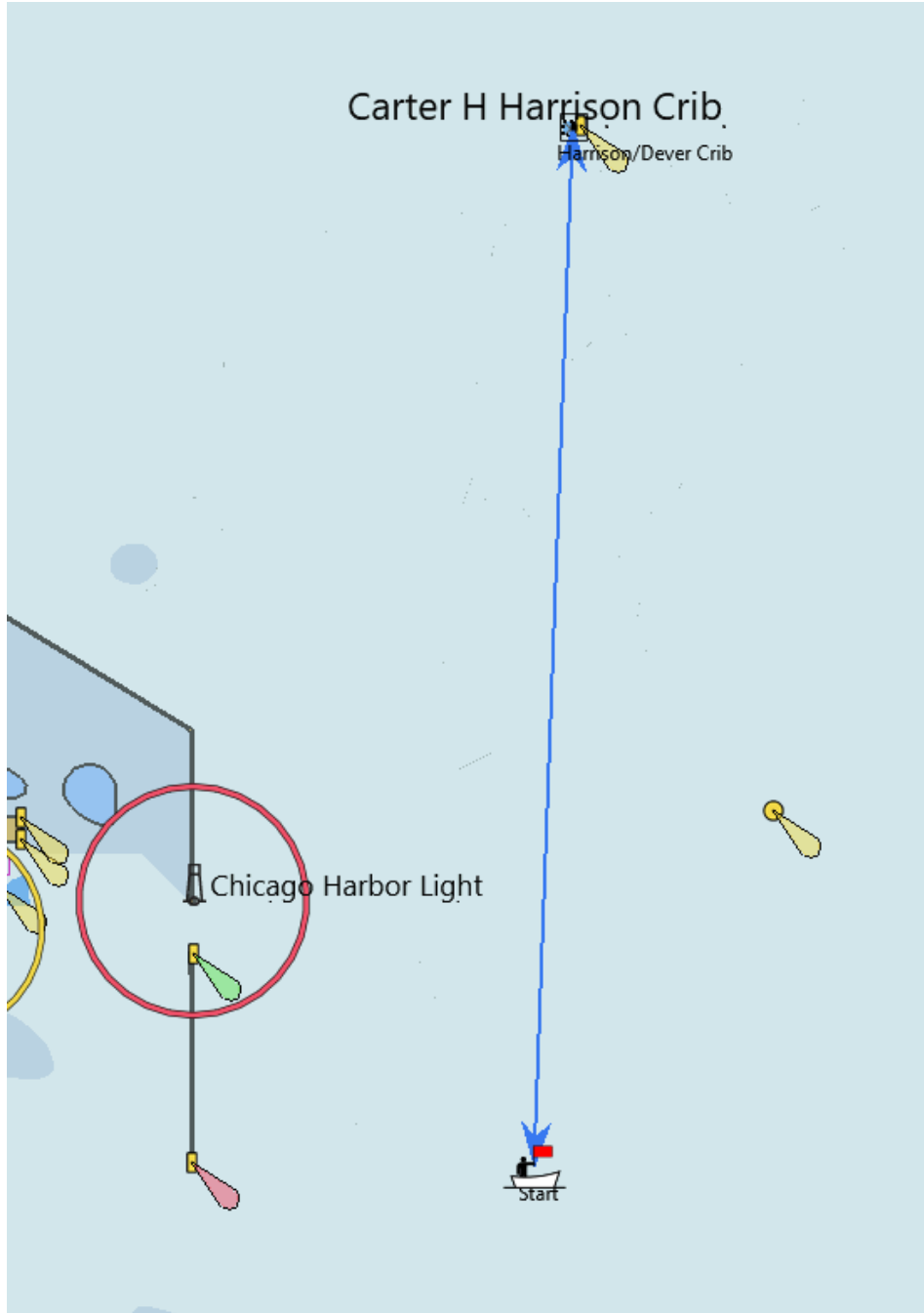
**APPROXIMATE COURSE DIAGRAMS**

THESE DIAGRAMS ARE NOT TO BE USED FOR NAVIGATIONAL PURPOSES

**COURSE 1 (SHORT)**



**COURSE 2 (MEDIUM)**



**COURSE 3 (LONG)**

