

**NIANTIC BAY YACHT CLUB  
2023 EARLY BIRD REGATTA  
SUNDAY JUNE 2nd, 2024**



**SAILING INSTRUCTIONS (SIs)**

**1. RULES**

1.1. This event will be governed by the rules as defined in The Racing Rules of Sailing.

**2. CHANGES TO SAILING INSTRUCTIONS**

2.1. Any change to the sailing instructions will be posted before 2200 hours on Saturday June 1st.

**3. COMMUNICATIONS WITH COMPETITORS**

Notices to competitors will be posted on the official notice board located on Yacht Scoring at <https://yachtscoring.com/emenu.cfm?eID=16690> (**Regatta Website**) and will be announced on VHF channel 68 at 1145 hours on the day of the race.

3.1. On the water, the Race Committee (RC) intends to monitor and communicate with competitors via VHF radio on channel 68.

3.2. Failure to hear a radio message does not constitute grounds for a request for redress.

3.3. [DP] While racing, except in an emergency, a boat shall not make voice or data transmissions and shall not receive voice or data communication that is not available to all boats.

**4. SIGNALS MADE ASHORE**

4.1. Signals made ashore will be displayed on the NBYC flagpole.

4.2. When flag AP is displayed ashore, '1 minute' is replaced with 'not less than 30 minutes' in Race Signals AP.

**5. SCHEDULE OF RACES**

5.1. Warning for the first race: 1200

5.2. Competitors shall check-in with the Race Committee prior to the warning of the first race by sailing past the stern of the RC Signal vessel and hailing their sail number.



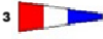


5.3. No warning signals will be made after 1500.

5.4. Code flag "Alpha" flying at the finish indicates that racing is done for the day.

**6. CLASS FLAGS**

6.1. PHRF classes will be specified on the scratch sheet.

6.2. The class flags will be:

Class 1: Numerical Pennant "1"		(white background with red circle)
Class 2: Numerical Pennant "2"		(blue background with white circle)
Class 3: Numerical Pennant "3"		(red, white, blue vertical stripe)
Class 4: Numerical Pennant "4"		(red background with white cross)
Class 5: Numerical Pennant "5"		(yellow, blue vertical stripe)

**7. RACING AREA**

Racing will take place in Niantic Bay and Long Island Sound

## 8. COURSES

- 8.1. The course for each race for each Class will be posted on the signal board of the RC Signal vessel.
- 8.2. The Class Flag will be displayed followed by a space, then followed by the course for that class.
- 8.3. The last mark signaled will be the finish.
- 8.4. The courses will be displayed as the series of marks in the sequence in which they shall be rounded (i.e., "1 HW" means Class 1 starts, rounds H, FINISHES at W).
- 8.5. Any numeral inserted in the displayed course indicates the number of times the preceding sequence shall be repeated (i.e., AL2 means AL then AL again). Ditto (") marks mean; "same course as the course listed immediately above."
- 8.6. Leave all marks to Port EXCEPT if the mark is circled. CIRCLED marks are to be left to starboard.

## 9. MARKS

- 9.1. All marks other than Government Marks will be orange or yellow inflatable marks.
- 9.2. The following marks are rounding marks:

Mark	Type	Description	North Deg	West Deg
B	Dropped	inflatable east of Black Point	41 17.20'	72 11.72'
C	Dropped	Inflatable north end of Niantic Bay	41.18.95'	72 11.264'
D	Dropped	Inflatable south of Millstone	41 17.30'	72 10.045'
E	Dropped	Inflatable west of Bartlett Reef	41 17.00'	72 8.59'
H	Fixed	C "1" North of Hatchett	41 16.2348'	72 15.7148'
M	Dropped	Inflatable between Black Point and Millstone	41 17.803'	72 11.00'
Q	Fixed	R "8" Bell south of CT River	41 14.8515'	72 18.8374'
S	Fixed	R "4" south of Bartlett Reef	41 15.5714'	72 8.3333'
W	Fixed	R "6" at White Rock	41 18.0023'	72 10.4752'
Z	Fixed	RW "PI" north of Plum Island	41 13.2774'	72 10.7857'

- 9.3. Appendix A is a diagram of the marks. Positions are approximate and the table above is the official position.

## 10. OBSTRUCTIONS

- 10.1. All boats shall pass to the east of C "7" Three Foot Rock. This area is defined as an obstruction.
- 10.2. All boats shall pass to the west of White Rock island (the rocky island itself – not bell R "6".) This area is defined as an obstruction.

## 11. THE START

- 11.1. The starting line is between the staff flying an orange flag on the RC Signal vessel and the course side of one of the marks B, C, D, M
- 11.2. The mark referenced in 11.1 will be announced on VHF channel 68 a minimum of 15 minutes before the start.
- 11.3. Code flag Lima shall be displayed if the starting mark is changed.
- 11.4. The starting sequence of classes will be in the order displayed starting at the top of the signal board. Classes recalled will be restarted prior to starting the next class.
- 11.5. If any part of a boat's hull is on the course side of the starting line at her starting signal and she is identified, the RC will attempt to hail her sail number. Failure to hail her number, failure of her to hear such a hail, or the order in which boats are hailed will not be grounds for a request for redress. This changes RRS 62.1(a).

## 12. THE FINISH

The finishing line will be between a staff flying a blue flag on the RC vessel and the course side of the final mark posted in SI 8.3 above.

## 13. TIME LIMIT

- 13.1. The time limit for the first boat to properly sail the course and finish is 1700, regardless of class. If no boat in a class properly sails the course and finishes by 1700, the race will be abandoned for that class.
- 13.2. Any boat finishing any race later than 1745 will be scored TLE. This changes RRS A5, A4.2 and A11.
- 13.3. Any boat racing in a PHRF class or Ensign class that finishes more than 60 minutes after the first boat in her class that properly completes the course and finishes shall be scored TLE.
- 13.4. Any boat racing in a One Design class (except Ensigns) that finishes later than 30 minutes after the first boat in her class to finish shall be scored TLE.
- 13.5. Any boat scored TLE shall be awarded points equal to the number of boats in her class that finished properly plus 1. This changes RRS A4.1.
- 13.6. Failure to meet the time limit will not be grounds for redress. This changes RRS 62.1(a).

## 14. HEARING REQUESTS

- 14.1. Protests and Requests for Redress shall be filed at the RC Signal Boat at NBYC docks or electronically via email to [todd.e.field@gmail.com](mailto:todd.e.field@gmail.com) no later than one hour after the Signal boat docks.
- 14.2. The docking time will be posted to the Notice Board on the **Regatta Website**.
- 14.3. Hearings will be scheduled at the earliest opportunity following completion of the last race. The Protest Committee may at its discretion hear the protest virtually, as recommended by Appendix M and the US Sailing Guidelines for Video Conference Protest or Redress Hearings.

## 15. SAFETY REGULATIONS

[DP] A boat that retires from a race shall notify the RC at the first reasonable opportunity on VHF channel 68 or the NBYC Club office on VHF Channel 72 or 860-739-0558.

## 16. RISK STATEMENT

RRS 3 states: 'The responsibility for a boat's decision to participate in a race or to continue to race is hers alone.' By participating in this event each competitor agrees and acknowledges that sailing is a potentially dangerous activity with inherent risks. These risks include strong winds and rough seas, sudden changes in weather, failure of equipment, boat handling errors, poor seamanship by other boats, loss of balance on an unstable platform and fatigue resulting in increased risk of injury. Inherent in the sport of sailing is the risk of permanent, catastrophic injury or death by drowning, trauma, hypothermia or other causes.

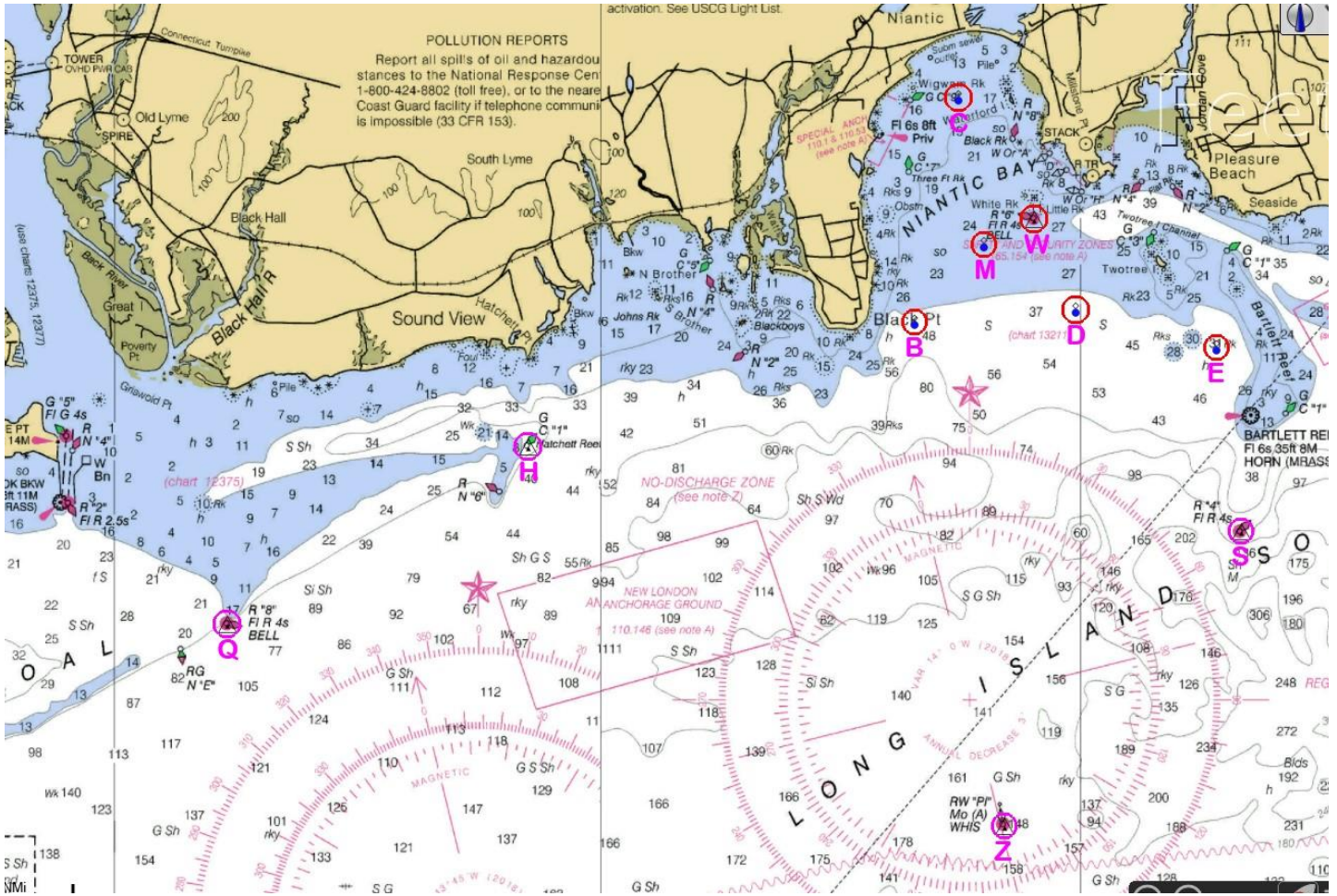
## 17. CONTACT

Niantic Bay Yacht Club 8 Shore Road, Niantic, CT 06357  
860-739-0558. VHF Channel 72.  
Club and Event information is available at [www.nbyc.org](http://www.nbyc.org)

**Regatta Website** is Yacht Scoring at <https://yachtscoring.com/emenu.cfm?eID=16690>

OA / Regatta Chair:	Steve Marenakos, <a href="mailto:smarenakos@gmail.com">smarenakos@gmail.com</a> ,	860-690-5396
PRO:	Todd Field <a href="mailto:todd.e.field@gmail.com">todd.e.field@gmail.com</a> ,	631 897-0492
Club Manager:	Pierre Bumgardner <a href="mailto:manager@nbyc.org">manager@nbyc.org</a> ,	860-912-6940
Protest Committee:	George Atwood, <a href="mailto:Atwood_G@msn.com">Atwood_G@msn.com</a> ,	203-809-8491

# 18. APPENDIX A – COURSE DIAGRAM



The above chart is for visual reference of the marks. SI 9.2 gives the coordinates of each mark.

## APPENDIX B – DISTANCES

to

nm	B	C	D	E	H	M	Q	S	W	Z
B		1.78	1.28	2.36	3.16	0.81	5.85	3.02	1.23	3.99
C	1.78		1.89	2.8	4.31	1.17	7.02	4.04	1.12	5.69
D	1.28	1.89		1.13	6.18	4.95	7.05	2.16	0.77	4.06
E	2.36	2.8	1.13		5.41	1.98	8	1.44	1.74	4.07
H	3.16	4.31	6.18	5.41		3.88	2.73	5.59	4.32	4.74
M	0.81	1.17	4.95	1.98	3.88		6.59	3	0.44	4.53
Q	5.85	7.02	7.05	8	2.73	6.59		7.93	7.03	6.26
S	3.02	4.04	2.16	1.44	5.59	3	7.93		2.92	2.95
W	1.23	1.12	0.77	1.74	4.32	0.44	7.03	2.92		4.73
Z	3.99	5.69	4.06	4.07	4.74	4.53	6.26	2.95	4.73	

Black Point and White Rock are accounted for in all calculations.