



The Ted Hood Regatta

HOST: Eastern Yacht Club

August 16 - 18, 2024

Marblehead, MA

Organizing Authority (OA): Storm Trysail Club

**The host club is the Eastern Yacht Club (“EYC”, official host); in association with
the Corinthian Yacht Club and the Boston Yacht Club**

SAILING INSTRUCTIONS (SI’s)

Preamble:

The notation [NP] in a rule of the sailing instructions (SIs) means that a boat may not protest another boat for breaking that rule. This changes RRS 60.1(a).

1. RULES

1.1 The event is governed by the rules as defined in the Racing Rules of Sailing (RRS) The regatta will be governed by the rules as defined in The Racing Rules of Sailing (RRS); the 2024 PHRF New England (PHRF-NE), and ORRez policies, procedures and by-laws; the Mass Bay Sailing Association 2024 General Sailing Instructions; One-design class rules for one-design classes; except as any of these are modified by the NOR or these Sailing Instructions

1.2 Per RRS 90.2, the Race Committee may make changes orally on the water via the appropriate VHF channel.

1.3 This will be the Star class First District Blue Star and Green Star event for First District members, and an Open event for boats from other districts. STCR (Star Class Rules) will apply for championship.

2. CHANGES TO THE SAILING INSTRUCTIONS

Any change to the sailing instructions will be posted before 0900 on the day it will take effect, except that any changes to the schedule of races will be posted by 1800 on the day before it will take effect.

3. COMMUNICATIONS WITH COMPETITORS

3.1 Notices to competitors will be posted on the official notice board located at <https://yachtscoring.com/emenu.cfm?eID=16810>

3.2 It is the intention of the OA to make a courtesy announcement each morning on VHF 72 for all classes at 1030. This announcement may include the intentions of the Race Committee.

3.3 On the water, the race committee may make courtesy broadcasts to competitors on the VHF channel designated.

3.3.1 One-Design Circle 1, j 105 and J70, classes, VHF Channel 67

3.3.2 One-Design Circle 2, Star Class, VHF Channel 78A

3.3.3 PHRF and ORRez Circle, VHF Channel 72

3.4 [DP] While racing, except in an emergency, a boat shall not make voice or data transmissions and shall not receive voice or data communication that are not available to all boats.

4. CODE OF CONDUCT

[DP] Competitors and support persons shall comply with reasonable requests from race officials.

5. SIGNALS MADE ASHORE

5.1 Signals made ashore will be displayed at the yardarm of the Casey Flagpole at the Eastern Yacht Club. Other clubs may display flags, in which case the display is a courtesy only.

5.2 When flag AP is displayed ashore, '1 minute' is replaced with 'not less than 60 minutes' in Race Signals AP.

6. SCHEDULE

6.1 Thursday August 15, 2024

1700 – 1900 Registration and Happy Hour, Eastern YC Sailing Center

1900 Skippers Meeting Eastern YC Sailing Center

6.2 Friday August 16, 2024

0730 – 0930 Registration Eastern YC Sailing Center

1200 First Warning Signal for ORRez Class, PHRF Classes 1 & 2, Star Class. and J/105's only.
Multiple races to follow.

1700 Happy Hour and Daily Awards Eastern YC Sailing Center

6.3 Saturday August 17, 2024

1200 First Warning for All classes

Note J/105's will be racing out of the One Design Circle 1 Saturday, and not the Handicap Circle.
Multiple races to follow.

1700 Happy Hour and Daily Awards Eastern YC Sailing Center

6.4 Sunday August 18, 2024

1200 First Warning for All classes: ORRez, PHRF Class 1, PHRF Class2, PHRF JAM Class 3, Star Class, J/105, and J/70. Note J/105's will be racing out of the One Design Circle Sunday, and not the Handicap Circle.

Multiple races to follow.

1500 No Warning signal after this time.

1700 Happy Hour, Daily and Overall Awards Eastern YC Sailing Center.

7. CLASS FLAGS

7.1 For the One-Design Line, the class insignia will be the class flag.

7.2 For non-one design classes the corresponding numeral pennant and class splits will be posted in Addendum C.

8. RACING AREA

Racing areas are shown in Addendum A.

9. MARKS

9.1 Start and finish marks will be green tetrahedrons.

9.2 Original rounding marks for the One Design Line 1 will be yellow tetrahedrons. New marks will be pink tetrahedrons.

9.3 Original rounding marks for One Design Line 2 will be red tetrahedrons. New marks will be green tetrahedrons with a wide white band.

10.4 For the PHRF and ORRez Line, original rounding marks will be orange tetrahedrons. New marks will be pink tetrahedrons.

10.5 If an original mark was signaled to be a green tetrahedron, a new mark will be an orange tetrahedron with a wide white band

10. COURSES

10.1 The diagrams in Addendum B show the courses, including the approximate angles between legs, the order in which marks are to be passed, and the side on which each mark is to be left.

10.2 No later than the warning signal, the race committee signal vessel will display the approximate compass bearing to the first mark.

10.3 If a gate mark is missing, the remaining mark is to be rounded to port.

10.4 A green flag displayed no later than the warning signal means 'Mark 1 for the class about to start will be a green tetrahedron'.

10.5 A pink flag displayed no later than the warning signal means 'Mark 1 for the class about to start will be a pink tetrahedron'.

11. THE START

11.1 Races will be started using RRS 26.

11.2 The starting line is between a staff displaying an orange flag on the signal vessel at the starboard end and the course side of the port-end starting mark.

11.3 If any part of a boat's hull is on the course side of the starting line at her starting signal and she is identified, as a courtesy the race committee will attempt to hail her sail number on the designated VHF channel. The timeliness of the hail, failure of her to hear such a hail, or the order in which boats are hailed all shall not be grounds for a request for redress. This changes RRS 62.1(a).

12. CHANGE OF THE NEXT LEG OF THE COURSE

To change the next leg of the course, the race committee will lay a new mark (or move the finishing line) and remove the original mark as soon as practicable. When in a subsequent change a new mark is replaced, it will be replaced by an original mark.

13. THE FINISH

The finishing line will be between a staff displaying a blue flag and on a finishing vessel and a nearby mark.

14. TIME LIMITS AND FINISHING WINDOW

14.1 The time limit for the first in each class to finish is 90 minutes.

14.2 The Finishing Window is the time for boats to finish after the first boat sails the course and finishes. Boats failing to finish within the Finishing Window, and not subsequently retiring, being penalized, or given redress, will be scored TLE without a hearing. The boats being scored TLE will be scored one more than the points scored by the last boat that finished within the Finishing Window.

14.3 The Finishing Window will be 30 minutes.

15. HEARING REQUESTS

15.1 For each line, the protest time limit is 60 minutes after the signal vessel for that line docked. The time limit will be posted on the official notice board at <https://yachtscoring.com/emenu.cfm?eID=16810>

15.2 Hearing request forms are available at YachtScoring link in and at the protest desk located in the Sailing Center, near the Race Committee Office.

15.3 Notices will be posted no later than 30 minutes after the protest time limit to inform competitors of hearings in which they are parties or named as witnesses. Hearing will be held at the Eastern Yacht Club, as soon as practicable. A hearing schedule will be posted showing the intended time for hearings.

16 SAFETY REGULATIONS

16.1 [NP] A boat shall check in before her first race of each day by hailing the race committee signal vessel with her sail number and the number of souls on board. A boat failing to check in will receive a 20% scoring penalty as calculated in RRS 44.3 for each race in which a breach occurs, without a hearing. This changes RRS 63.1 and A5.

16.2 [DP] A boat that retires from a race shall notify the race committee at the first reasonable opportunity by VHF radio or hail. If this is not practicable before leaving the racing area, the boat shall call the Eastern Yacht Club (781-631-1400) after berthing.

16.3 [DP] Boats requiring assistance shall contact the signal vessel, giving her sail number, fleet, location and the nature of the emergency, including the nature of any injuries.

18. OFFICIAL VESSELS

18.1 The signal vessel will display a blue race committee flag.

18.2 Other race committee vessels will display a yellow race committee flags.

18.3 The judge vessel will display a 'JUDGE' flag.

ADDENDUM A

Distance and Bearing to racing Areas

Below are the approximate distances and compass bearing to each race line.

Center of Red Line: One Design

1.2 nm at a compass bearing of 120-deg magnetic from Marblehead Bell

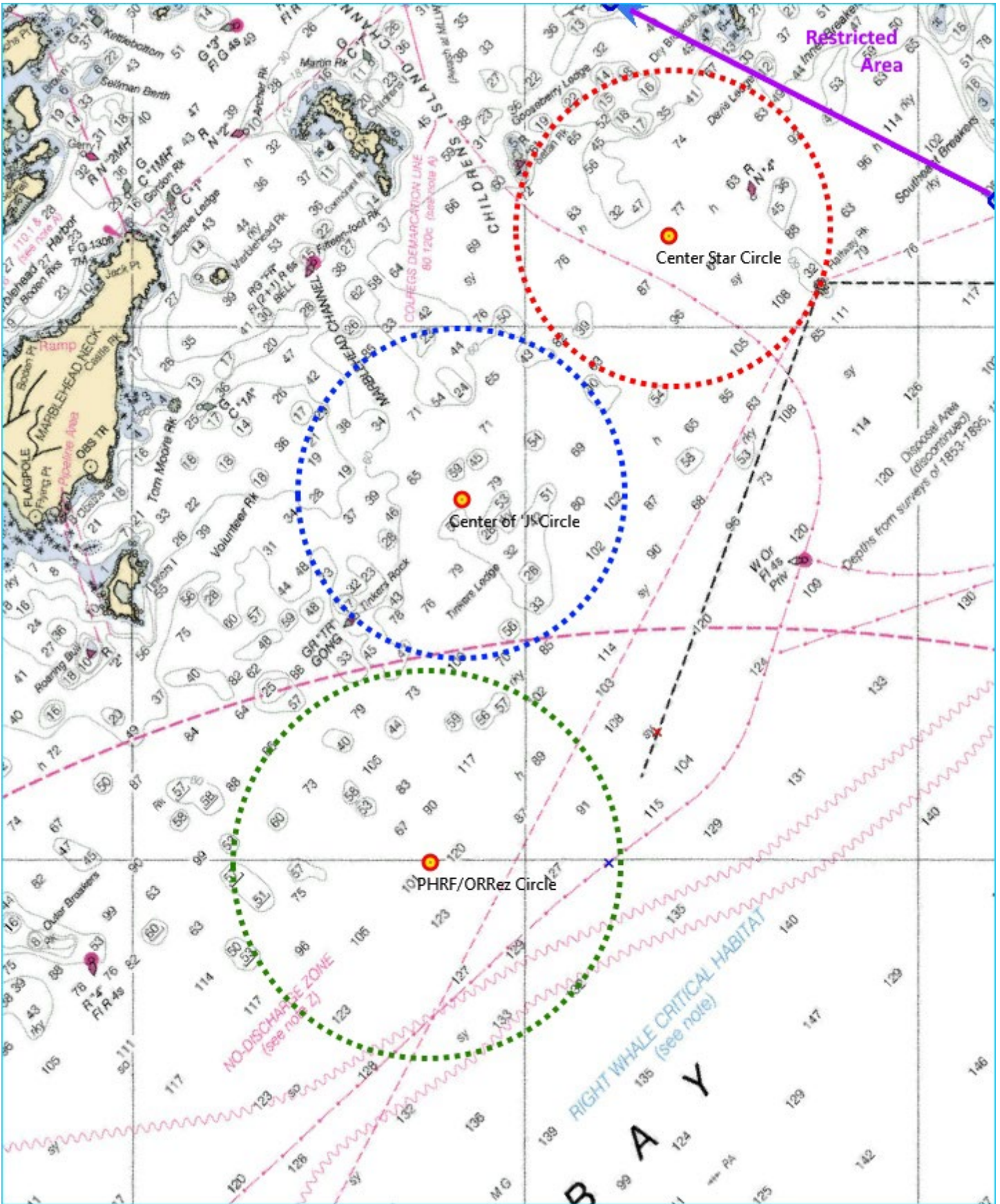
RGRFL (2+1) R 6S BELL

Center of Blue Line: PHRF and ORRez

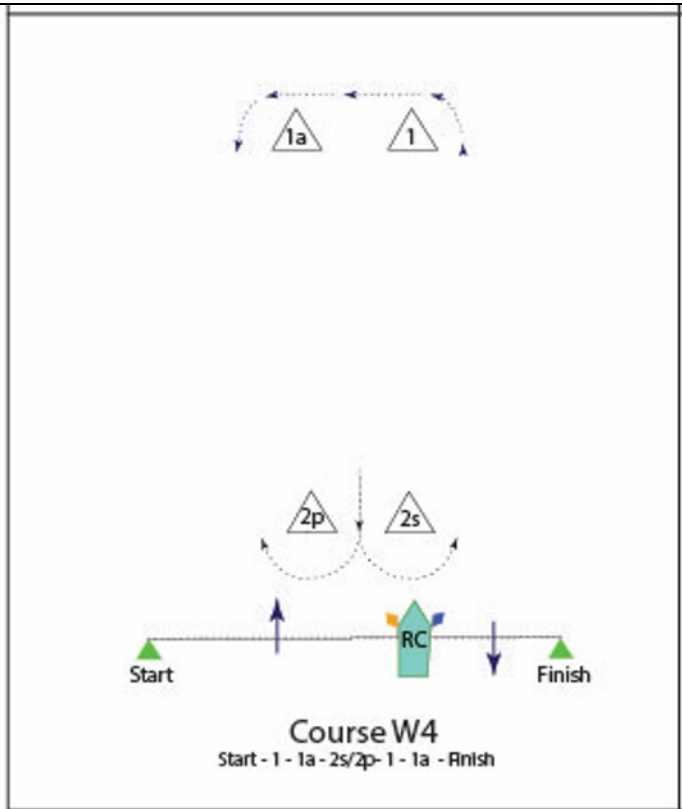
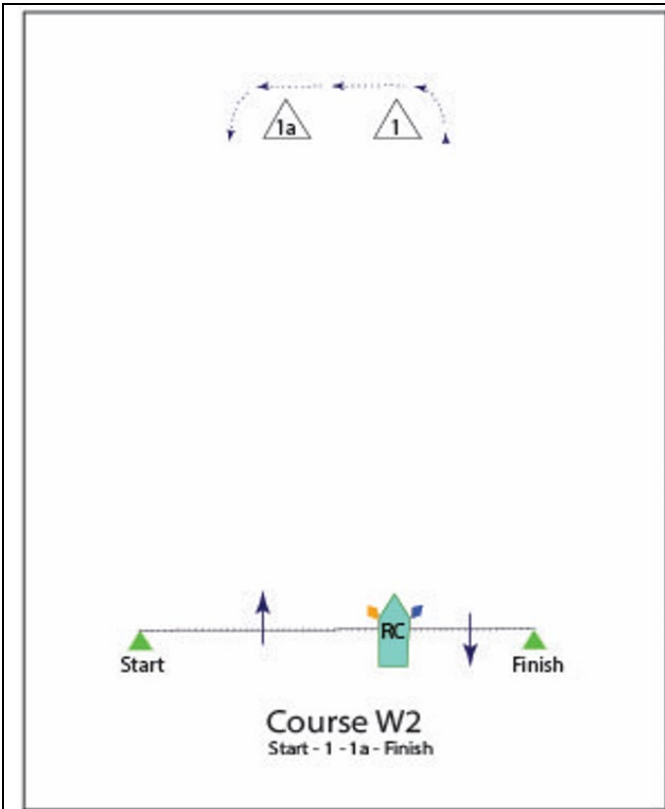
2.3 nm at a compass bearing of 185-deg magnetic from Marblehead Bell

RGRFL (2+1) R 6S BELL

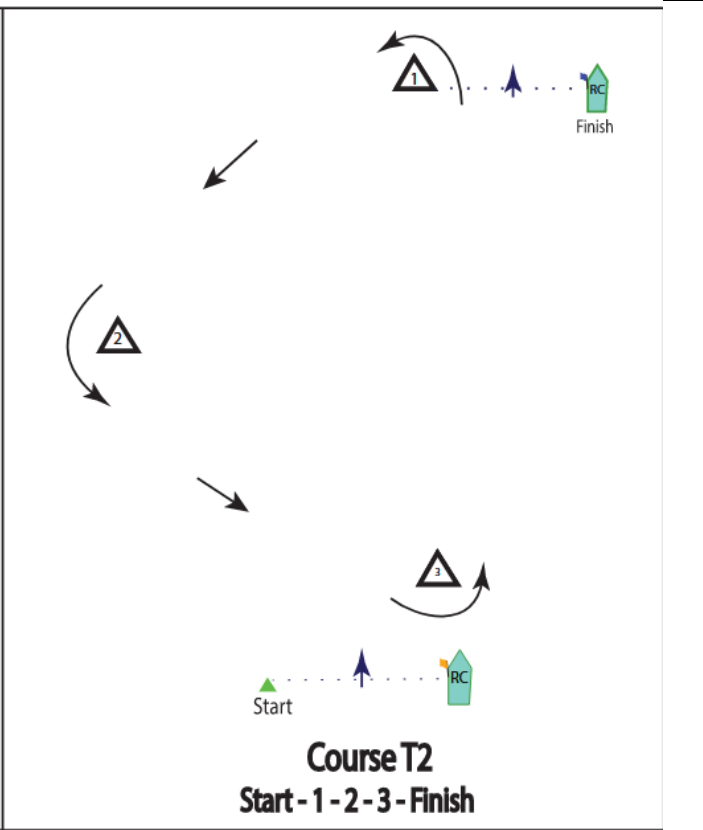
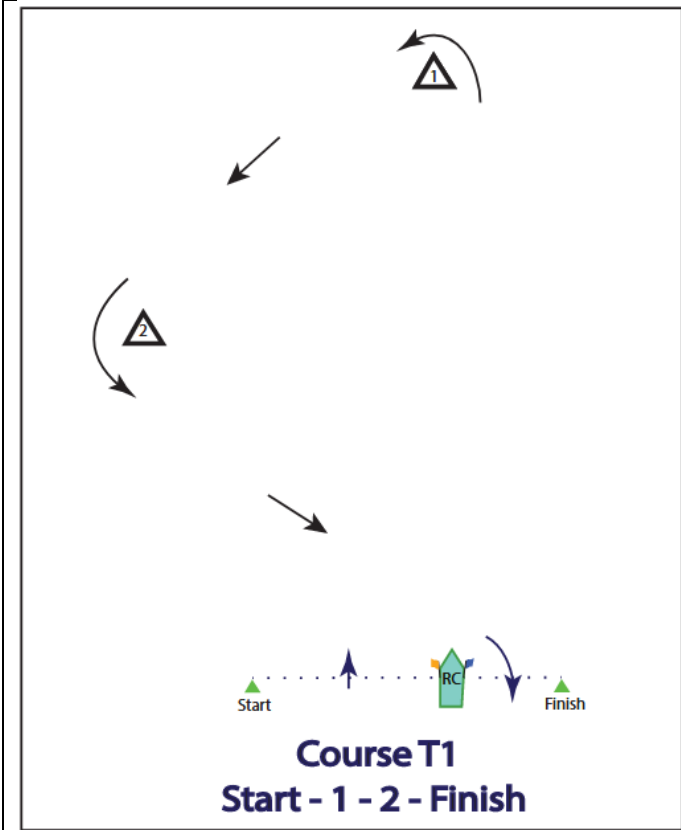
TED HOOD REGATTA - 2024 CART OF RACING AREAS



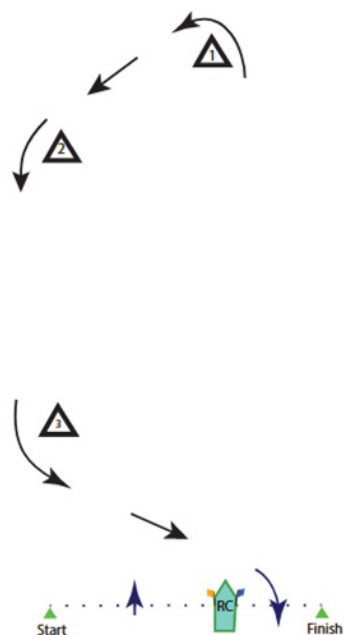
ADDENDUM B -----Ted Hood Regatta – Course Diagrams – 2024



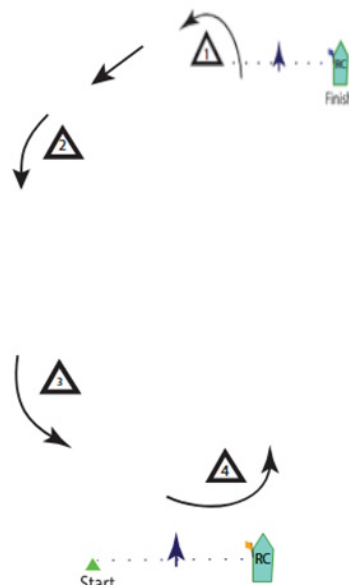
NOTE: For all 'T' courses – If there is a gate or offset at a mark location, it shall be considered one mark, and both shall be left to port.



NOTE: For all 'T' courses – If there is a gate or offset at a mark location, it shall be considered one mark, and both shall be left to port.



Course T3
Start - 1 - 2 - 3 - Finish



Course T4
Start - 1-2 -3 - 4 - Finish

CHANGE of COURSE Marks if needed.

First change mark for 'Orange Mark 1' will be a Pink tetrahedron. First change mark for 'Green Mark 1' will be a Yellow tetrahedron.

ADDENDUM C

Handicap Racing Class Flags

Division	Class	Class Flag
ORRez-ToT-SPIN	Class 1	Numeral Pennant 1
PHRF-ToT-SPIN	Class 1	Numeral Pennant 1
PHRF-ToT-SPIN	Class 2	Numeral Pennant 2
PHRF-ToT-JAM	Class 3	Numeral Pennant 3

Class Splits are contained in the Scratch sheet which can be found on www.yachtscoring.com