



# Cape to Cape Challenge XVI

3<sup>rd</sup> August 2024

## Sailing Instructions



### 1. Rules

1.1 The Rules will be governed by the current US Sailing Racing Rules of Sailing (RRS), the prescriptions of the USSA, and these sailing instructions.

1.2 If there is a conflict between the NOR and these SI, the SI will prevail.

### 2. Eligibility

2.1 Open to all boats who have a valid ORR-EZ certificate and completed online registration at [yachtscoring.com](http://yachtscoring.com), signed a liability waiver, and paid the entry fee.

2.2 All boats must meet all applicable national, state, and local requirements for safety equipment.

### 3. Notices to Competitors

3.1 Notices to Competitors will be posted on the official regatta notice board on Yachtscoring. It is the responsibility of the competitors to check for updates.

<https://yachtscoring.com/emenu.cfm?eid=16840>

### 4. Changes to Sailing Instructions

4.1 Changes to these sailing instructions shall be posted not later than 0830 the day they take effect, except for changes to the start time which shall be posted no later than 2100 the evening before.

### 5. Signals made ashore

5.1 No official signals will be made ashore.

5.2 Notifications to competitors will be posted on the official notice board on Yachtscoring.

### 6. Schedule

- 10:25 Warning Signal for Classes B&C Combined
- 10:55 Warning Signal for Class A
- No start will occur after 1230.

### 7. Class Flags

7.1 Signal flag "1" will be used for Class A Spinnaker. Red dot on white



7.2 Signal Flag "2" will be used for Class B Spinnaker. White dot on blue.



7.3 Signal Flag "3" will be used for Class C Non-Spinnaker. Red White Blue.



7.4 Classes may start together with both Class flags displayed on the signal boat

### 8. Sailing Area

8.1 August 3rd Cape to Cape race will be in the Atlantic Ocean and Delaware Bay between Lewes, DE and Cape May, NJ.

### 9. Courses

9.1 There are two possible courses – Course A and Course B. The start for both courses will be 0.5nm downwind from the windward mark, in the vicinity of the Roosevelt Inlet.



# Cape to Cape Challenge XVI

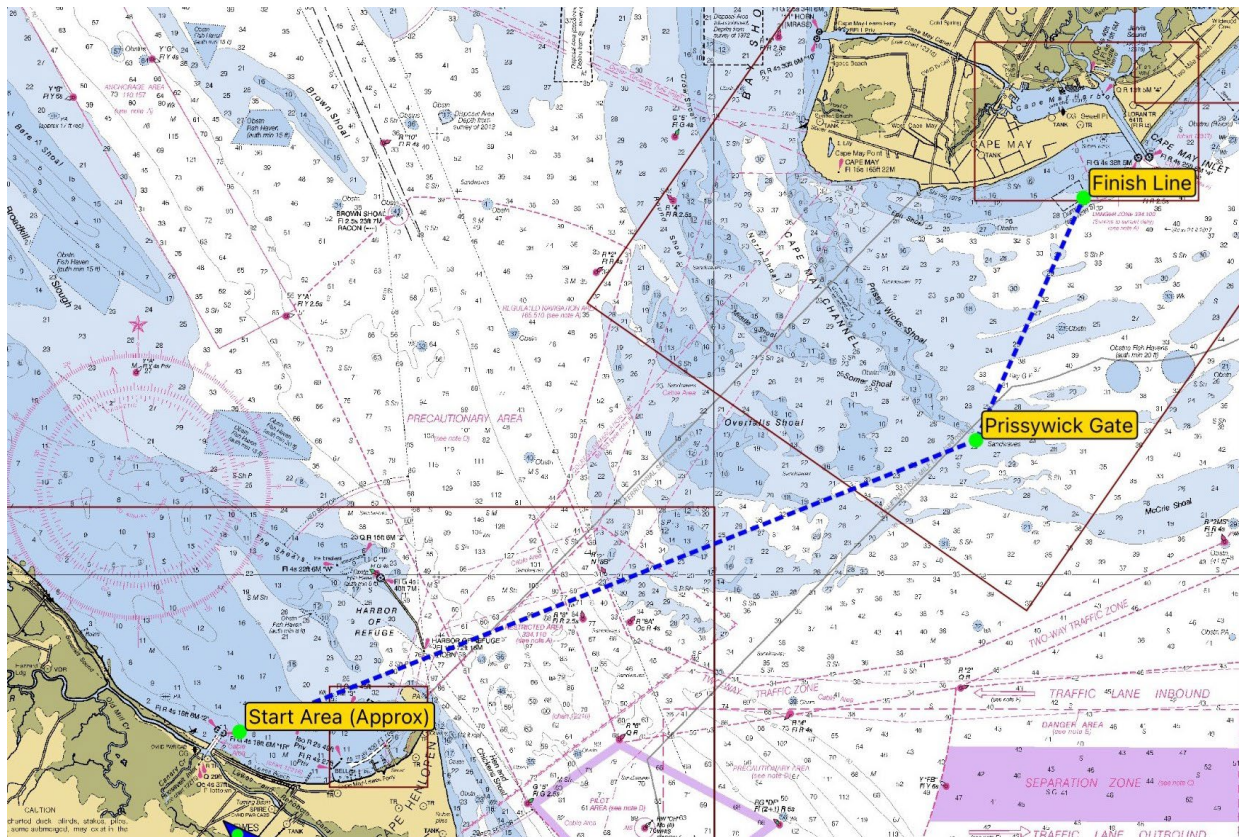
3<sup>rd</sup> August 2024

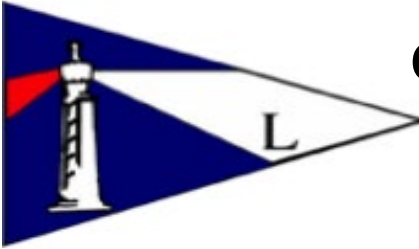
## Sailing Instructions



### 9.2 Course A - Ocean Course

- From Start line in vicinity of Roosevelt Inlet, to **windward mark**. RC will announce rounding direction on Ch 78.
- Leave **Prissywick Shoal** to port: There will be a gate (Orange tetrahedron to port and yellow tomato shaped mark to starboard (seaward)) near Prissywick Shoal located at approximately N38.52.000, W74.55.000. The gate is located to seaward of the Prissywick shallow spot.
- The finishing line will be located off Cape May Beaches at approximately N38.55.599, W74.52.952 which is located off the CM beach West of 2 CM . The Finish line is to be crossed in the direction from the Prissywick gate.
- Marks depicted below are approximate, and will need to be visually identified on approach





# Cape to Cape Challenge XVI

3<sup>rd</sup> August 2024

## Sailing Instructions



### 9.3 Course "B" Alternate Course .

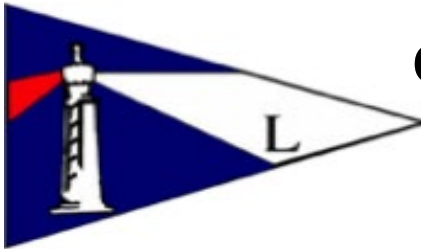
- From Start line in vicinity of Roosevelt Inlet, to a windward mark. RC will announce rounding direction on Ch 78.
- There will be a **Finish Gate** (Orange tetrahedron to port and yellow tomato shaped mark to starboard (seaward)) near the western entrance to the Cape May Canal.
- Marks depicted below are approximate, and will need to be visually identified on approach



### 10. Checking in

10.1 [DP] Before the first warning signal of the day, each yacht shall sail past the stern of the race committee signal boat and hail her sail number or check in via radio hail on Channel 78 until acknowledged by the RC.

### 11. [Blank]



# Cape to Cape Challenge XVI

3<sup>rd</sup> August 2024

## Sailing Instructions



### 12. Start

12.1 The starting sequence shall be in accordance with RRS Rule 26.

12.2 The starting line will be between a staff displaying an orange flag on the Race Committee boat and a pin end starting mark, red ball, or an orange flag on a pin end boat.

12.3 A boat that does not start within 15 minutes after her starting signal shall be scored DNS/DNC without a hearing. This changes A5.

12.4 A series of short sound signals may precede the warning signal of the race. These are not timed signals.

12.5 RC starting line boats may use a stand-off buoy.

12.6 Recalls: The race committee will hail on VHF channel 78 boats identified as OCS, UFD, or BFD. A boat may not base a request for redress on the failure to hear or receive the announcements, the timeliness of announcement, or the order in which boats are announced. There will not be a display board at the weather mark with sail numbers for UFD and BFD. This changes RRS 62.1(a).

### 13. Course Changes

13.1 Course A may be shortened a Prissywick gate. The S flag may be displayed with a class flag. This indicates a Shortened course for the displayed class only and other classes should proceed. If no class flag is displayed with the S Flag, then ALL boats will finish in accordance with 32.2.

### 14. Finish

14.1 The finishing line will be between a staff displaying a blue flag on a Race Committee boat and an Orange tetrahedron at the finishing line location provided in item 9 "The Course". In addition, the Race Committee Finish Boat may fly an orange flag to improve distant visibility.

### 15. Time Limits

15.1 Bay Crossing Race (3rd August) Race Time Limit

Class A boats not finishing within 5 hours 15 minutes of their class starting will be scored time limit expired (TLE) without a hearing.

Class B & C boats not finishing within 6 hours 15 minutes of their class starting will be scored time limit expired (TLE) without a hearing.

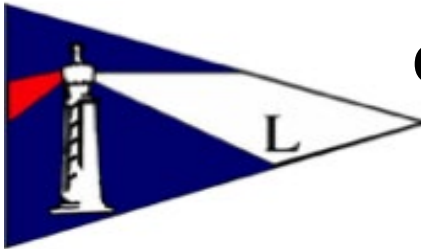
This changes RRS 35, A5.1, A5.2.

### 16. Scoring

16.1 Scoring will be ORREZ TOT, using a Point to Point course, and the estimated average wind speed for the duration of the race.

### 17. Alternative Penalties

Appendix V is in effect, Sections V1 and V2.



# Cape to Cape Challenge XVI

3<sup>rd</sup> August 2024

## Sailing Instructions



### 18. Protests

18.1 A protesting yacht shall display a red flag flown conspicuously from the backstay as soon as possible after the incident.

18.2 The protested yacht can acknowledge her infringement by using alternative penalties

18.3 A protesting yacht must notify the protested yacht as soon as possible after the incident of her intention to protest.

18.4 A protest form must be filled out and given to the RC within 45 minutes of the Signal Boat Dock time at CYCCM

### 19. Safety

19.1[DP] All boats must have an operating VHF radio capable of receiving and transmitting.

19.2 [DP] A yacht that retires from the race course shall notify the RC before leaving the course area. Notification can be by VHF Ch 78 making sure the RC acknowledges the message. A yacht that is unable to notify the RC prior to leaving the course area shall notify the RC by cellphone (provided at Skippers Meeting & on Yachtscore on 8/3) as soon as possible. Retiring boats, if possible, should also notify other nearby boats she is retiring.

19.3 This race is being conducted in a major commercial traffic area and across shipping lanes. Give way to ships and ferries that are sailing in channels and may have restricted maneuverability. Monitor ship to ship VHF channel 13.

19.4 Roosevelt inlet has a shoal building from the north beach that is marked. **Use caution when traversing Roosevelt inlet.**

### 20. Radio Use

20.1 The Race Committee will use VHF channel 78 for communications to the competitors. RC broadcasts of its intentions are as a courtesy only and in no way relieve competitors of their responsibility to monitor and respond to RC flags and signals.

### 21. Disclaimer of Liability

21.1 Competitors participate in the regatta entirely at their own risk. See RRS 4, Decision to Race. The organizing authority or any other party involved in the organization of the regatta will not accept any responsibility or liability for material damage or personal injury or death sustained in conjunction with or prior to, during, or after the regatta.

### 22. Rights to use Name and Likeness

22.1 By participating, competitors automatically grant to the organizing authority the right, in perpetuity, to make, use, and show, at their discretion, any photography, audio, and video recordings, and other reproductions of them made at the venue without compensation.



# Cape to Cape Challenge XVI

## 3<sup>rd</sup> August 2024

### Sailing Instructions



#### 23. Awards

23.1 Class Awards will be awarded as follows:

1. Racer Cruiser (Class A Spinnaker) - 1st, 2nd, 3rd
2. Performance Cruiser (Class B Spinnaker) - 1st, 2nd, 3rd
3. Non-Spinnaker - 1st, 2nd, 3rd

23.2 Cape to Cape Cups will be awarded to the fastest corrected time in each of these two categories, whether in Spinnaker or Non-Spinnaker classes:

1. Racer Cruiser
2. Performance Cruiser

23.3 Prizes will be presented at the awards Reception held at CYCCM Saturday evening.

#### 24. Skippers Meeting

24.1 The Cape to Cape Skippers Meeting will be held by Zoom on Aug 2, 2024 at 5:00 pm at the following link: <https://us02web.zoom.us/j/86359039478?pwd=TyKHXRPNqAEMmZZIjTHcNyOUUlbUyt.1>

By Phone: [\(301\) 715-8592](tel:3017158592)

Meeting ID: 863 [5903 9478](https://us02web.zoom.us/j/86359039478)

Passcode: 344944