



Roton Point Fall Multihull Regatta

Rowayton, CT, USA

September 13 – 15, 2024

Organizing Authority:

Roton Point Sailing Association

SAILING INSTRUCTIONS

1. RULES

- 1.1 The regatta will be governed by the rules as defined in The Racing Rules of Sailing (RRS).
- 1.2 Refer to NOR Section 1 for additional rules.

2. COMPETITOR NOTICES AND MEETINGS

- 2.1 Notices to competitors will be posted on the Official Notice Board located at the clubhouse.
- 2.2 Sailors are strongly encouraged to monitor the RC on VHF radio prior to the start and for a minimum of 5 minutes thereafter for any RC information. Failure of RC VHF communications shall not be grounds for redress by a boat. *This changes RRS 60.1(b)*. Refer to SIs 10 and 17.
- 2.3 Refer to NOR Section 4 for the scheduled competitors' meetings, to be held at the clubhouse. Additional meetings may be scheduled.

3. CHANGES TO SAILING INSTRUCTIONS

- 3.1 Any change to the sailing instructions will be posted not less than 30 minutes prior to the first scheduled race (or removal of AP ashore, whichever is later) on the day it will take effect. Any change to the schedule of races will be posted by 2000 on the day before it will take effect.
- 3.2 Oral changes may be provided on the water. Code flag L over code flag C will be hoisted to indicate an oral change to the sailing instructions is being communicated.

4. SIGNALS MADE ASHORE

- 4.1 Signals made ashore will be displayed from the RPSA flagpole adjacent to the launching area.
- 4.2 When flag AP is displayed ashore, '1 minute' is replaced with 'not less than 30 minutes' in race signal AP. *This changes Race Signal AP.*

5. SCHEDULE OF RACES

- 5.1 Refer to NOR 4 for scheduling information.

6. CLASS FLAGS

- 6.1 Class flag and Division assignments will be announced at the initial competitors' meeting, and will be posted on the official notice board.
- 6.2 Each Open Class boat shall fly a colored ribbon from its mainsail. Based upon registration, the Open Class may be split into spinnaker and non-spinnaker classes.

7. RACING AREAS

- 7.1 The racing area will be in Long Island Sound south of the mouth of Five Mile River. Appendix B shows the location of racing areas.

8. COURSES

- 8.1 Appendix A shows the courses to be used.
- 8.2 All marks left to port except gates.
- 8.3 Gates will be used as the leeward mark. In the event one of the gate marks is not present, leave the remaining mark to port.

9. MARKS

- 9.1 Refer to Appendix A for mark descriptions.

10. THE START

- 10.1 Refer to Appendix A for the starting line description.
- 10.2 Boats whose warning signal has not been made, shall avoid the starting area during the starting sequence for other races.
- 10.3 A boat that does not start within four minutes after her starting signal will be scored Did Not Start without a hearing. *This changes RRS 63.1, A4 and A5.*
- 10.4 Order of the initial start will be announced at the initial competitors' meeting, and will be posted on the official notice board.
- 10.5 As a courtesy, the RC shall attempt to announce OCS boats via VHF. Neither failure of the RC to make the announcement, nor the order of the announcement, nor failure of a boat to hear the announcement shall be grounds for redress by a boat. *This changes RRS 60.1(b)*.

10.6

11. CHANGE OF THE NEXT LEG OF THE COURSE

11.1 A leg may be changed up to 010° in bearing and/or 0.2 nm in length without a signal or change of mark color. *This changes RRS 33.*

12. THE FINISH

12.1 Refer to Appendix A for the finish line description.

12.2 There will be a safety buoy approximately 60 feet' off the starboard side of the committee vessel, which must be left to starboard. The safety buoy ranks as a mark, but may not be precisely on the finish line. On the final leg, a boat that crosses between the RC Signal Vessel and the safety mark prior to finishing, and who also does not correct the error, shall be scored Did Not Finish (DNF) without a hearing. *This changes RRS 63.1, A4 and A5.*

12.3 If the safety buoy is out of position (adrift or not set), boats that are finishing shall remain a minimum distance of 3 boat lengths away from the RC Signal Vessel, and maintain a watch for boats that may be starting.

13. PENALTY SYSTEM

13.1 RRS 44.1 will be changed as follows: delete "Two-Turns" and replace it with "One-Turn."

14. TIME LIMITS

Class	Race Time Limit	Mark 1 Time Limit
One Designs	90 minutes	30 minutes
Open Class		

14.1 If no boat has passed Mark 1 (the initial weather mark) within the Mark 1 time limit the race will be abandoned.

14.2 FINISHING ON THE WATER: Boats may be finished on the course at the discretion of the RC. The RC determines the method and order of finishing, and may assign finish times to Open Class boats. *This changes RRS 35 and A4, and amends SI 12.1.*

15. PROTESTS AND REQUESTS FOR REDRESS

15.1 A boat protesting another boat shall follow RRS 61.1(a) with the following modification: The ISAF requirement for under 6 meter boats applies to all Beach Cat Classes. *This changes RRS 61.1(a)(2).*

15.2 Boats intending to file a protest are requested to report to the RC upon finishing.

15.3 Protest forms are available at the clubhouse. All protests shall be filed there no later than 60 minutes after the docking of the RC Signal Vessel.

15.4 Requests for Scoring Review (including OCS) shall be filed within the protest time limit on forms available at the clubhouse. Such a request will be reviewed by the RC before being scheduled for a hearing by the Protest Committee. If unresolved, it shall be considered a request for redress and will be considered to have met the protest time limit. *This changes RRS 62.2.*

15.5 Notices will be posted within 30 minutes after expiration of the protest time limit to inform competitors of hearings in which they are parties or named as witnesses. Hearings will be held in the clubhouse.

15.6 The penalty, if any, for an infringement of any **rule** other than a rule of RRS Part 2 will be at the discretion of the Protest Committee and may be other than disqualification. *This changes RRS 64.2.*

15.7 Infringements of SIs 10.2, 17 and 19 are not protestable by a boat. *This changes RRS 60.1(a).*

15.8 *A decision made by the RC under SI 17.4 shall not be grounds for a request for redress by a boat. This changes RRS 60.1 (b).*

16. SCORING

16.1 Refer to NOR Section 9 for scoring information.

17. SAFETY

17.1 ***The RC intends to operate on VHF channel 63. In the event that a different channel is to be used, it will be displayed on the RC Signal Boat.***

17.2 **VHF Channel 16 is monitored by first responder agencies. This channel may also be used in case of emergency.**

17.3 CHECK IN / OUT AFLOAT:

(a) Boats are requested to check in by hailing their sail number to the RC Signal Vessel before the start of the first race each day and/or the first race following any postponement ashore.

(b) Boats leaving the racing area before the end of racing on any day shall notify the RC ASAP.

17.4 Any boat receiving 'hands on' assistance will be scored Did Not Finish without a hearing. *This changes RRS 63.1 and A5.* The RC may decide when a boat or crew needs assistance.

17.5 **GENERAL:** If wind, wave, or water conditions make you doubtful of your ability to handle the conditions, please retire from the race.

17.6 **ELECTRICAL POWER LINES – AVOID!!!** Before raising the mast, and always while sailing, check for and avoid low overhead electrical power lines. If you see a power line, AVOID IT! A MAST COMING IN CONTACT OR EVEN NEAR AN ELECTRICAL POWER LINE CAN CAUSE SERIOUS INJURY OR DEATH TO PEOPLE ON OR TOUCHING THE BOAT!

17.7

18. REPLACEMENT OF CREW OR EQUIPMENT

- 18.1 Substitution of competitors will not be allowed without prior written approval of the RC.
- 18.2 Substitution of damaged or lost equipment will not be allowed unless authorized by the RC.
 - (a) Substitution of sails will not be allowed without prior written approval of the RC.
 - (b) Requests for substitution of equipment other than sails shall be made to the RC at the first reasonable opportunity.

19. RADIO COMMUNICATION

- 19.1 For safety, all boats are strongly urged to sail with at least one submersible VHF radio. Best practice is one VHF radio per person, attached to each person.
- 19.2 Except in an emergency (or if rendering aid), boats shall not make radio transmissions while racing.
- 19.3 Boats may receive information via VHF radio at any time, and are encouraged to monitor the RC for information throughout the regatta.
- 19.4 Class rules restricting the use of radios shall not be grounds for protests by a boat.
This changes RRS 60.1(a).
- 19.5 Except in an emergency, boats shall neither transmit nor receive information via mobile telephone at any time while racing.

20. PRIZES

- 20.1 Prizes will be awarded per the Notice of Race.

21. DISCLAIMER OF LIABILITY

- 21.1 Competitors participate in the regatta entirely at their own risk, See RRS 3, Decision to Race. The organizing authority will not accept any liability for material damage or personal injury or death sustained in conjunction with, prior to, during, or after the regatta.

22. OFFICIAL VESSELS

- 22.1 Official Vessels will be marked with Roton Point burgees and/or RC flags.

APPENDIX A – COURSES AND MARKS

*(The standard Hobie and US Sailing Multihull courses **will not** be used.)*

For all boats, the course to be sailed will be identified with a number indicating the number of legs.

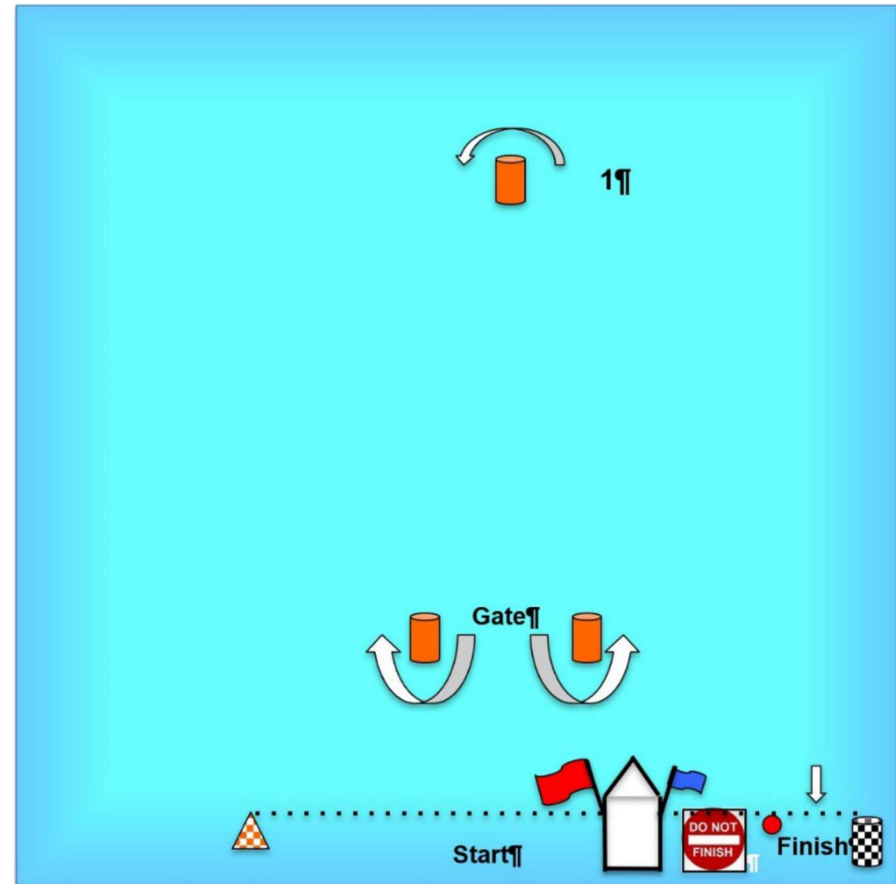
Examples:

2: S-1-F (downwind)

4: S-1-Gate-1-F (downwind)

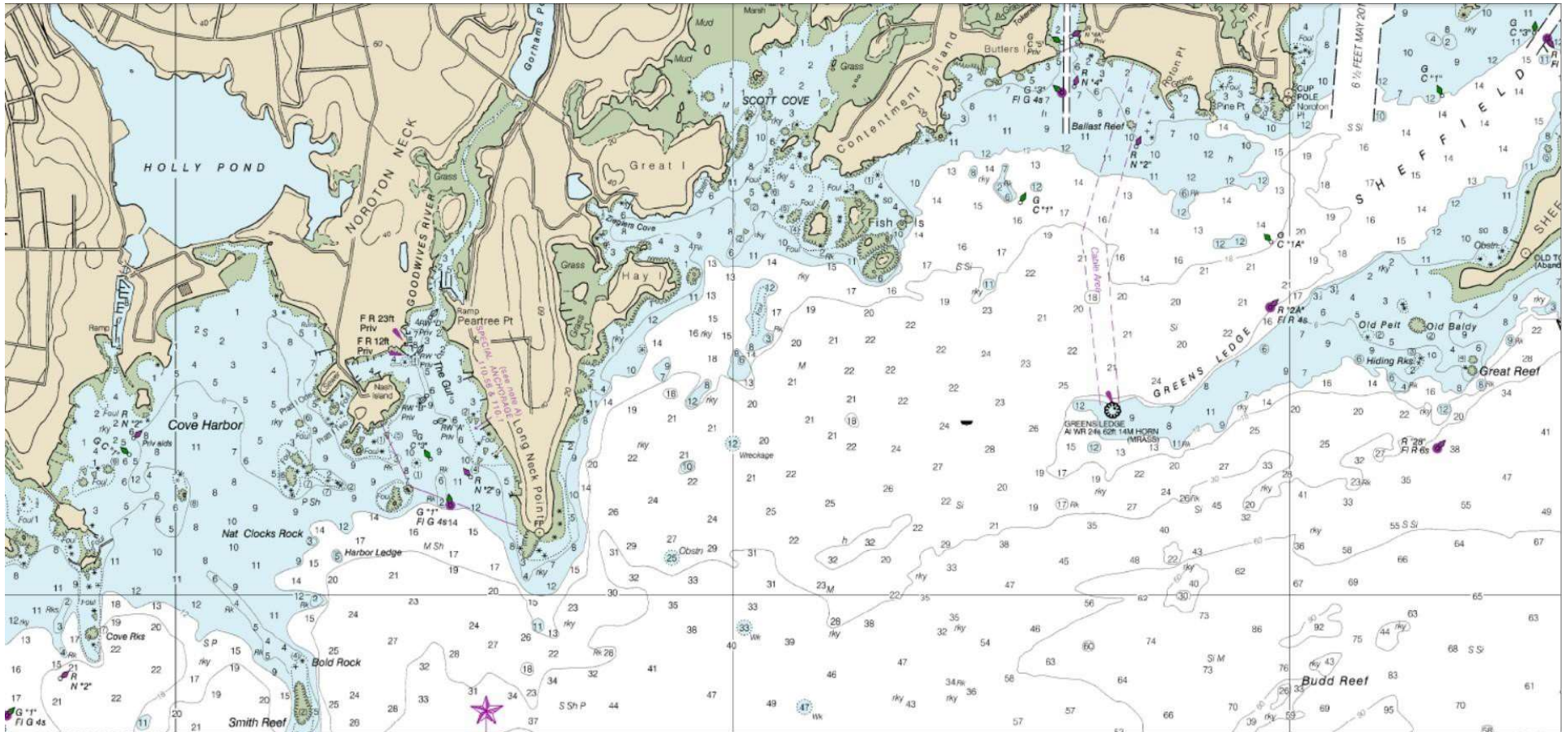
6: S-1-Gate-1-Gate-1-F (downwind)

Note: Diagram not to scale, and all angles are approximate.



APPENDIX B – RACING AREA

↓ ROTON POINT



NOTE: Observe the rocks shown in the vicinity of the red buoy to the immediate southwest of the Roton Point jetty.