

2025 Helly Hansen Sailing World Regatta Series St. Petersburg Berthing/Hauling & Logistics

Vehicle Parking in Downtown St Petersburg

No parking available from Wednesday - Monday at SPYC or SPYC Sailing Center

Parking Lot Map: [Al Lang Stadium](#)* [South Core Parking Garage](#), [McNulty Garage](#), [Sundial Garage](#)

*Al Lang Stadium is not available on Saturday, February 15; Note all parking restrictions

**No tolerance for camping or staying overnight in vehicle in downtown St Petersburg

All visiting boats and trailers must obtain docking information and trailer tags from the SPYC Waterfront Director. All arrangements must be coordinated in advance per the NOR.

SPYC Sailing Center - 250 2nd Ave SE, St Petersburg

SPYC Docks - Entrance across from main clubhouse

Wednesday, February 12 - Sunday, February 16

Launching: Keelboats using a 2-ton and 3-ton crane for launching purposes

The Lightning Fleet will launch & haul daily from SPYC Sailing Center

Docking: Contact Dockmaster per NOR 13 for docking assignments

*Only pre-approved Trailers may park at the Sailing Center

**All boats/trailers must be removed from the Sailing Center by 6:00pm Monday, February 17

Contact SPYC Waterfront Director for local marina to large larger keelboats

Launching: Boats over 3 Tons may contact _____ directly for arrangements

Elva Rouse Park - 901 North Shore Drive NE, St Petersburg

Wednesday, February 12 - Sunday, February 16

Classes: A-Cat, Contender, Flying Dutchman, Melges 15, Windmills & Weta

Overnight security provided - property left is at the owner's risk

*No overnight parking or camping - Competitors may be DSQ'd if reported

Derby Lane - 10490 Gandy Blvd N, St. Petersburg

Wednesday, February 12 - Monday, February 17

Classes: All Class trailers for storage

*Advance [Registration](#) & parking tag required. Space is limited.

SPYC Sailing Center Haul Out - 250 2nd Ave SE, St Petersburg

Sunday, February 16

Staging: No earlier than 7:30am Sunday, only trailers attached to vehicles allowed on Northbound Lanes of Bayshore Drive (see map). *Vehicles only may be towed.*

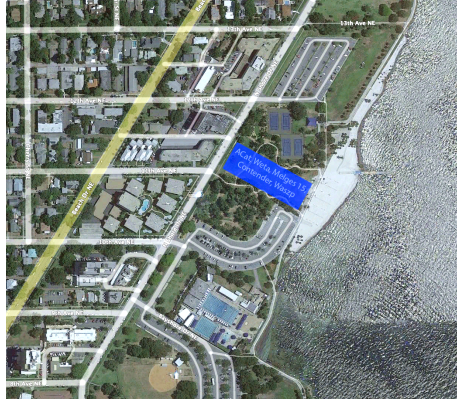
Dockside: One crew to report to vehicle and trailer for the active lineup

Washdown/De-rig: After haul out, move boat/trailer to Sailing Center parking lot

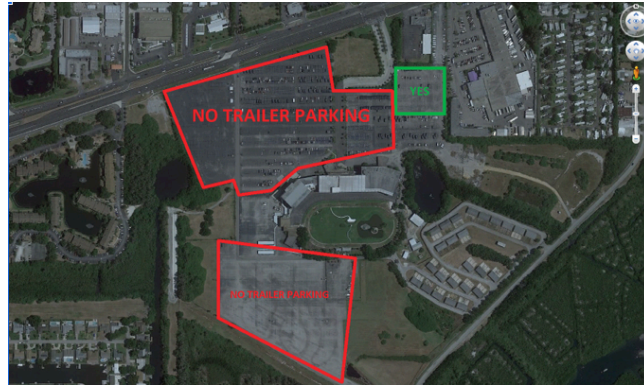
Extra time: Parking for boat/trailer with rig down may park on Bayshore Drive until 6pm

St. Petersburg Berthing/Hauling & Logistics Relevant Diagrams and Maps

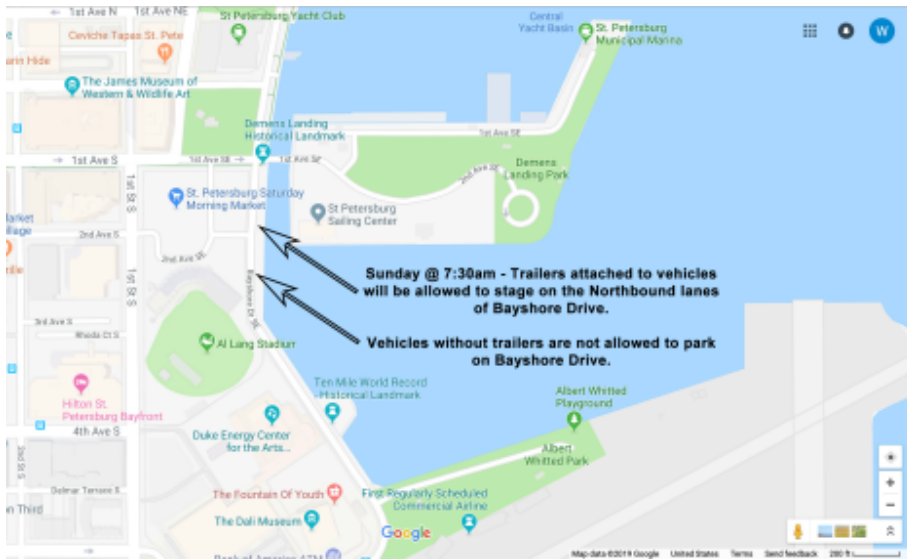
Elva Rouse Park (Beach launching)



Derby Lane (trailer parking)



Haul Out Directions - Sunday, February 16



St. Petersburg Yacht Club Marina & Sailing Areas Local Knowledge & Hazards

Teams should be aware of two shallow areas they may encounter.

Caution: The area southwest of the T-Dock at the Sailing Center



Caution: Area north of the Pier

