



**Alfred Roosevelt Cup**  
**May 16, 17, 2009**  
**Seawanhaka Corinthian Yacht Club**  
Oyster Bay – Long Island Sound

**NOTICE OF RACE**

**1 RULES**

- 1.1 The regatta will be governed by the rules as defined in *The Racing Rules of Sailing (RRS)*. The IRC Rules Parts 1, 2 and 4 and the PHRF rules of the Yacht Racing Association of Long Island Sound (YRALIS) will apply for boats in those classes. For all boats, the YRALIS Minimum Equipment Regulations for Category B events will apply.

**2 ELIGIBILITY AND ENTRY**

- 2.1 The regatta is open to boats that have an IRC, PHRF or CRF rating certificate for 2009. Classic boats that do not hold a valid rating certificate will be assigned a rating by the Race Committee; please contact the Regatta Chair.
- 2.2 Eligible boats may enter by completing the registration form on [www.yachtscoring.com](http://www.yachtscoring.com) together with the required fee, by May 10, 2009.
- 2.3 Late entries will be accepted until May 14, 2009, with a \$50 late fee.

**3 FEES**

The entry fee is \$150. This includes access to the Regatta Party for all registered crew. [A portion of the registration fee from each entry will be contributed to the Boeckel Foundation ]

**4 REGATTA SERIES**

The regatta will consist of two races, one each day.

**5 SCHEDULE OF EVENTS**

5.1 Saturday, May 16

1000 First signal

1800 Regatta Party and Dinner at Seawanhaka

Sunday, May 17

1000 First signal

1700 (or as soon as possible after racing) Awards Presentation

5.2 Division Assignment:

<u>Class</u>	<u>Division</u>
Classics	A
PHRF	B
IRC	C
One Design	D, E

5.3 The scheduled time of the first signal each day is 1000. As racing will be conducted in a “Pursuit” format, the slowest rated boat will start first and the fastest-rated boat last. Starting times will be assigned by the Race Committee according to ratings. The scratch sheet (with starting times) will be available on Friday, May 15, at [www.seawanhaka.org](http://www.seawanhaka.org). and will be posted on the official notice board at the Seawanhaka clubhouse.

## 6 MEASUREMENTS

Each boat shall produce a valid rating certificate. If a boat does not have a certificate, please contact the Regatta Chair to provide measurements so that the Race Committee can assign a rating.

## 7 SAILING INSTRUCTIONS

The sailing instructions will be available at [www.seawanhaka.org](http://www.seawanhaka.org)

## 8 VENUE

Attachment A shows the location of the racing areas.

## 9 THE COURSES

The Race Committee will signal the marks of the course each morning no later than the first signal. Each race is intended to be approximately 20 nautical miles but may be longer or shorter at the discretion of the Race Committee, taking into account the weather conditions of that day. The course may be different each day, however, the starting and finishing areas will be the same each day: the starting and finishing will be between Government Mark ‘G5’ in Oyster Bay and the Seawanhaka flagpole.

In addition, all boats will keep two boat lengths separation from any Classic Yachts, with the overtaking boat being the burdened boat.

## 10 PENALTY SYSTEM

The Scoring Penalty, rule 44.3, will apply. The penalty will be two places.

## 11 SCORING

Each Division will be separately scored using its handicap system and the Low Point System of Appendix A will be used for scoring the Divisions’ series. The Alfred Roosevelt Trophy will be awarded to the boat that finishes first in both races, or in the event of a tie, as determined by the Race Committee.

## 12 BERTHING

Seawanhaka Corinthian Yacht Club cordially extends the privileges of the Clubhouse and mooring facilities to participants before and after the races. Additional mooring facilities are available in Oyster Bay in the Lawrence Family anchorage

## 13 RADIO COMMUNICATION

Except in an emergency, a boat shall neither make radio transmissions while racing nor receive radio communications not available to all boats. This restriction also applies to mobile telephones.

## 14 PRIZES

Prizes will be awarded on Sunday at the Seawanhaka Corinthian Yacht Club clubhouse. First place prizes will be awarded for each Division and the Alfred Roosevelt Trophy will be awarded to the overall winner.

## 15 DISCLAIMER OF LIABILITY

Competitors participate in the regatta entirely at their own risk. See rule 4, Decision to Race. The Organizing Authority will not accept any liability for material damage or personal injury or death sustained in conjunction with or prior to, during, or after the regatta.

## 16 FURTHER INFORMATION

For further information please contact the Organizing Authority:

Seawanhaka Corinthian Yacht Club  
314 Yacht Club Road  
Centre Island, Oyster Bay, NY 11771  
516-922-6200; fax 516-922-6203

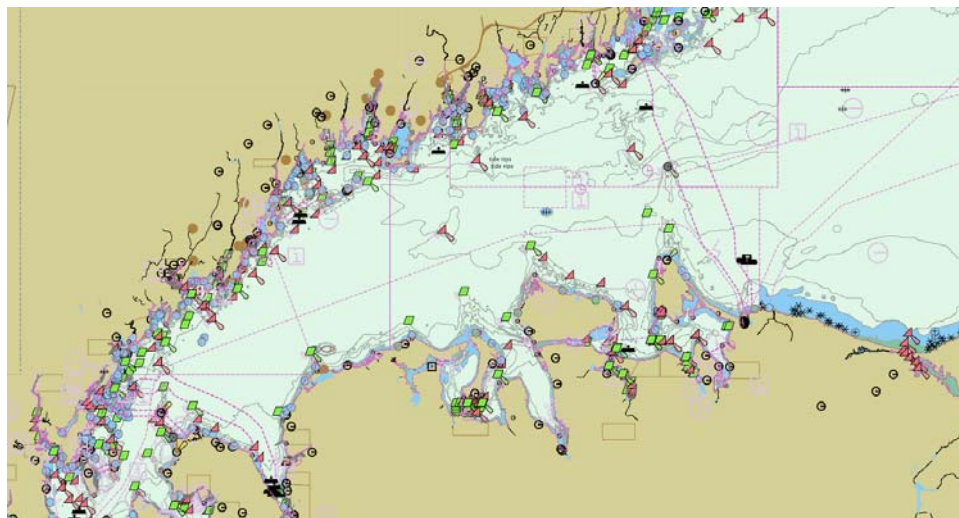
Or

William R. Denslow, Regatta Chair  
516-801-3266  
[wdenslow@optonline.net](mailto:wdenslow@optonline.net)

# Attachment A

**Reinsert in landscape format with waypoints etc – GP to do with waypoints from WRD**

GP – add the following buoys: G1, G5, G11B, G17, G19, G21,  
R13, R15, R28C, R32, R32A, R34, R38, R40 and the CSH Lighthouse



**Attachment B**  
(delete if we use yachtscoring)  
**Entry/Registration Form**

Sail # \_\_\_\_\_ Division & Rating \_\_\_\_\_

Race: **Alfred Roosevelt Cup; May 16-17, 2009** Date \_\_\_\_\_

Yacht name \_\_\_\_\_ Owner or master \_\_\_\_\_

Yacht Type \_\_\_\_\_ mail address \_\_\_\_\_

Topside color \_\_\_\_\_

Rig \_\_\_\_\_ Phone: Home \_\_\_\_\_ Business \_\_\_\_\_

LOA \_\_\_\_\_ Member YRA of LIS  or YRA of \_\_\_\_\_

DATE BUILT \_\_\_\_\_ CLUB AFFILIATION \_\_\_\_\_

Crew: \_\_\_\_\_  
\_\_\_\_\_  
\_\_\_\_\_  
\_\_\_\_\_

**Rating Under which you wish to race:**  
(Enclose Current Certificate)  
Enter multiple ratings if available

**Entry Fee:**  
(Enclosed)

IRC: Racer/Cruiser  Rating \_\_\_\_\_ \$ 150  
Racing  Rating \_\_\_\_\_

PHRF (YRA of LIS Certificate):

Spinnaker  \*⚓▼\*■\*⚓⚓⚓⚓⚓⚓⚓⚓

US Sailing #

Non-Spinnaker  \*⚓▼\*■\*⚓⚓⚓⚓⚓⚓⚓⚓  
Classic (CRF or Other) Rating \_\_\_\_\_

In consideration of this entry acceptance, I hereby agree that the safety of my yacht and her crew, and the decision whether or not to start or to continue to race, is my responsibility and not that of any person

sponsoring or undertaking such a race or activity. I hereby waive all claims which I may have against YRA, its member clubs and organizations and their respective officers, directors, members, committees, employees or agents, arising out of or in any way connected with my participation in any race or related activity sponsored or undertaken by any of them. I will inform my insurance underwriter of this waiver and inform all crew members of any yacht which I sail in any such race or activity of their responsibilities for safety. I agree that this waiver is binding on my heirs, representatives, successors, and assigns.

SIGNATURE (REQUIRED) \_\_\_\_\_