



## **NACRA 17, 49er, 49erFX & 470 US National Championship**

Proudly Hosted by Oakcliff Sailing  
Oyster Bay, NY, USA  
September 16-18, 2016

### **SAILING INSTRUCTIONS**

#### 1 RULES

- 1.1 The regatta will be governed by the rules as defined in The Racing Rules of Sailing 2013-2016.
- 1.2 The Class Rules and the Championship Rules for the 49er, 49er FX, NACRA 17 and the International 470 Class will apply. IHC stickers will not be required on masts and sails and country flags will not be required on sails.
- 1.3 RRS Appendix P, Special Procedures For Rule 42, will apply.
- 1.4 US Sailing Prescriptions 60.3, 63.2 & 63.4 will not apply.
- 1.5 If there is a conflict between the NOR and the Sailing Instructions, the Sailing Instructions shall take precedence. This modifies rule 63.7.

#### 2 IDENTIFICATION

Appendix G3, Identification on sails, will apply. Boats chartered or loaned for this event may carry national letters or a sail number in contravention of class rules. In no circumstances will a boat be permitted to race displaying the sail number of another boat in her class that is racing. This changes rule G3.

#### 3 CAMERA AND ELECTRONIC EQUIPMENT

Competitors may be required to carry on board cameras, sound equipment or positioning equipment as specified by the organizing authority. A boat shall not be given redress based on a claim involving this equipment. This changes rule 62.1. All competitors are requested to upload video or photos to the Oakcliff Sailing Facebook page and website.

#### 4 NOTICES TO COMPETITORS

Notices to competitors will be posted on the official notice board located online on the event Yacht Scoring page found at <http://www.yachtscoring.com/emenu.cfm?eID=2955>.

## 5 CHANGES TO THE SAILING INSTRUCTIONS

Any change to the sailing instructions will be posted not less than two hours before the scheduled warning signal on the day it will take effect, except that any change to the schedule of races will be posted by 2000 hours on the day before it will take effect.

## 6 SIGNALS MADE ASHORE

- 6.1 Signals made ashore will be displayed at the official flagpole located on the Oakcliff High Performance beach. When a signal is displayed over a class flag, it applies to that fleet only.
- 6.2 If AP is displayed ashore, '1 minute' is replaced with "not less than 45 minutes" in the race signal AP.
- 6.3 When flag Y is displayed ashore or from the signal vessel, rule 40, Personal Flotation Devices, applies at all times while afloat. This changes the Part 4 preamble.
- 6.4 If a change to the Sailing Instructions or Schedule is posted, a number flag corresponding to the change will be displayed along with code flag Lima.

## 7 SCHEDULE OF RACES

Thursday, September 15	0800	Boat Park Opens
	1500	First Signal for PRACTICE RACE ONLY
Friday, September 16	0900	Competitors meeting at Oakcliff Beach
	1100	First Signal
	1700	Dinner in Oakcliff Bunkhouse
Saturday, September 17	1000	First Signal
	1530	Sailors invited to Meadow Walk Art Show
Sunday, September 18	0900	Competitors Meeting at Oakcliff Beach
	1000	First Signal
	1500	No races to be started after
	1600	BBQ on Beach for Boat Pack-Up

(Prize Giving and Closing Ceremony as soon as possible after the end of racing)

## 8 FORMAT OF RACING

- 8.1 Twelve (12) Championship fleet races are scheduled.
- 8.2 A maximum of six (6) races per day for each fleet may be sailed at the discretion of the race committee.

## 9 CLASS FLAGS

- 9.1 The 470 class flag will be numeral pennant 1.
- 9.2 The 49er class flag will be numeral pennant 2.
- 9.3 The FX class flag will be numeral pennant 3.
- 9.4 The NACRA class flag will be a NACRA 17 insignia on a white background.

## 10 RACING AREA

- 10.1 Addendum A shows the location of the race area.
- 10.2 The course location will be Cold Spring Harbor.

## 11 COURSES

- 11.1 Addendum B describes the courses to be sailed.
- 11.2 No later than the warning signal, the race committee signal vessel will display the approximate compass bearing from the RC signal boat to Mark 1.

11.3 On the last leg to the finish, Mark 2B does not need to be honored.

## 12 MARKS

- 12.1 Mark 1 will be a Yellow Tetrahedron unless indicated as in SI 12.2.
- 12.2 The signal vessel shall indicate an extended leg for a particular class by flying code flag Echo no later than their warning signal. When code flag Echo is in effect, Mark 1 will be a green cylinder.
- 12.3 Mark 2 for all classes will be an orange cylinder.
- 12.4 The starting line will be between a staff displaying the Oakcliff flag on the Signal boat and the course side of a yellow inflatable mark on the port side of the line.
- 12.5 The finish line will be between a staff displaying the Oakcliff Flag on the Signal boat and the course side of a red buoy on the starboard side of the line.
- 12.6 An illustration of the course can be found in Addendum B.

## 13 START

- 13.1 Boats whose warning signal has not been made shall avoid the starting area during the starting sequence for other races.
- 13.2 A boat starting later than four (4) minutes after her starting signal will be scored Did Not Start (DNS) without a hearing. This changes Rule A4.
- 13.3 Boats whose sails numbers are displayed and hailed as BFD by a Race Committee boat close to Mark 1 following a Black Flag Start shall clear the racecourse.

## 14 CHANGE OF COURSE

- 14.1 For the green extended leg mark only, to change the next leg of the course, the race committee will signal the change accordingly and move the original mark.
- 14.2 To change the next leg of the course, the race committee will signal the change accordingly and will lay a new mark (or move the finishing line). When in a subsequent change a new mark is replaced, it will be replaced by the original mark. The change mark for the standard course will be a small white inflatable cylinder.

## 15 TIME LIMITS

- 15.1 The time limit and target time for each class (in minutes) are as follows:
- | Class   | First Mark Limit | Race Limit | Target Time |
|---------|------------------|------------|-------------|
| NACRA   | 25               | 60         | 45          |
| 49er&FX | 20               | 45         | 30          |
| 470     | 25               | 60         | 45          |
- 15.2 A race in which no boat in a Class rounds the first mark within the above First Mark Limit following the start, or sails the course and finishes within the Race Limit following the start, will be abandoned.
- 15.3 Boats failing to finish within 15 minutes after the first boat sails the course and finishes will be scored Did Not Finish without a hearing. This changes Rules 35, A4 and A5. Failure to meet the target time will not be grounds for redress. This changes rule 62.1(a).

## 16 PROTESTS, REQUESTS FOR REDRESS & PENALTIES

- 16.1 RRS Appendix T Section A (T1) shall apply.
- 16.2 RRS Appendix T Sections B (T2) and C (T3 & T4) shall apply. Expedited hearings may be held while afloat.

- 16.2 RRS Appendix T Section B, T 2.1 is changed by deleting the final sentence and replacing it with the following: "A boat takes a Post-Race Penalty by informing the race committee verbally, including information on when and where the incident occurred, immediately following (within 3 minutes of finishing) their finish and receiving and acknowledgement from the PRO." Under certain circumstances the Chief Judge may allow an extension of the 3 minute time limit.
- 16.3 RRS Appendix T Section B, T 2.2 is changed by deleting T 2.2 and replacing it with the following: "The Post-Race Penalty shall be 20%."

## 17 SCORING

- 17.1 The Low Point System as provided in rule Appendix A shall apply.
- 17.2 When fewer than five (5) races have been completed, a boat's series score will be the total of her race scores.
- 17.3 When five (5) or more races have been completed, a boat's series score will be the total of her race scores excluding her worst score.

## 18 PRIZES

Prizes will be awarded to the top three finishers in each class.

## 19 SUPPORT & COACH BOATS

- 19.1 Except when rendering assistance to a boat in danger at the boat's request or at the request of the race committee, support and coach boats shall stay 100 feet outside areas where boats are racing from the time of the Preparatory Signal for the first Class to start until the time the last boat finishes or the race committee signals a postponement, general recall or abandonment.
- 19.2 Support and coach boats shall be marked or identified as such.
- 19.3 The penalty for failing to comply with these requirements or the oral instructions of the race committee or of the protest committee will be at the discretion of the protest committee. The penalty may be imposed on any or all boats associated with the support or coach boat.

## 20 SAFETY REQUIREMENTS

- 20.1 A boat that retires from a race or does not intend to start a scheduled race shall promptly report this to the race committee and receive acknowledgement. If this is not possible, she shall promptly report her actions to a member of the Organizing Authority on shore at the launching area or in the Oakcliff office.
- 20.2 Prior to the Warning Signal for the first race a boat is scheduled to sail each race day, the boat shall sail on starboard tack past the stern of the Signal Boat, and shall hail her sail number until acknowledged by the race committee. Failure to comply with this SI will result in a three-place penalty in the first race that day without a hearing. This changes rule 63.1 and 64.1.

## 21 RADIO COMMUNICATION

A boat shall neither make radio transmissions while racing nor receive radio communication not available to all boats. This restriction also applies to mobile devices.

## 22 TRASH DISPOSAL

Trash may be placed aboard support or official boats.

23    DISCLAIMER

Competitors participate in the regatta entirely at their own risk. See Rule 4, Decision to Race. The organizing authority, race committee, host club and their officers, employees and volunteers will not accept any liability for material damage or personal injury or death sustained in conjunction with or prior to, during, or after the regatta.

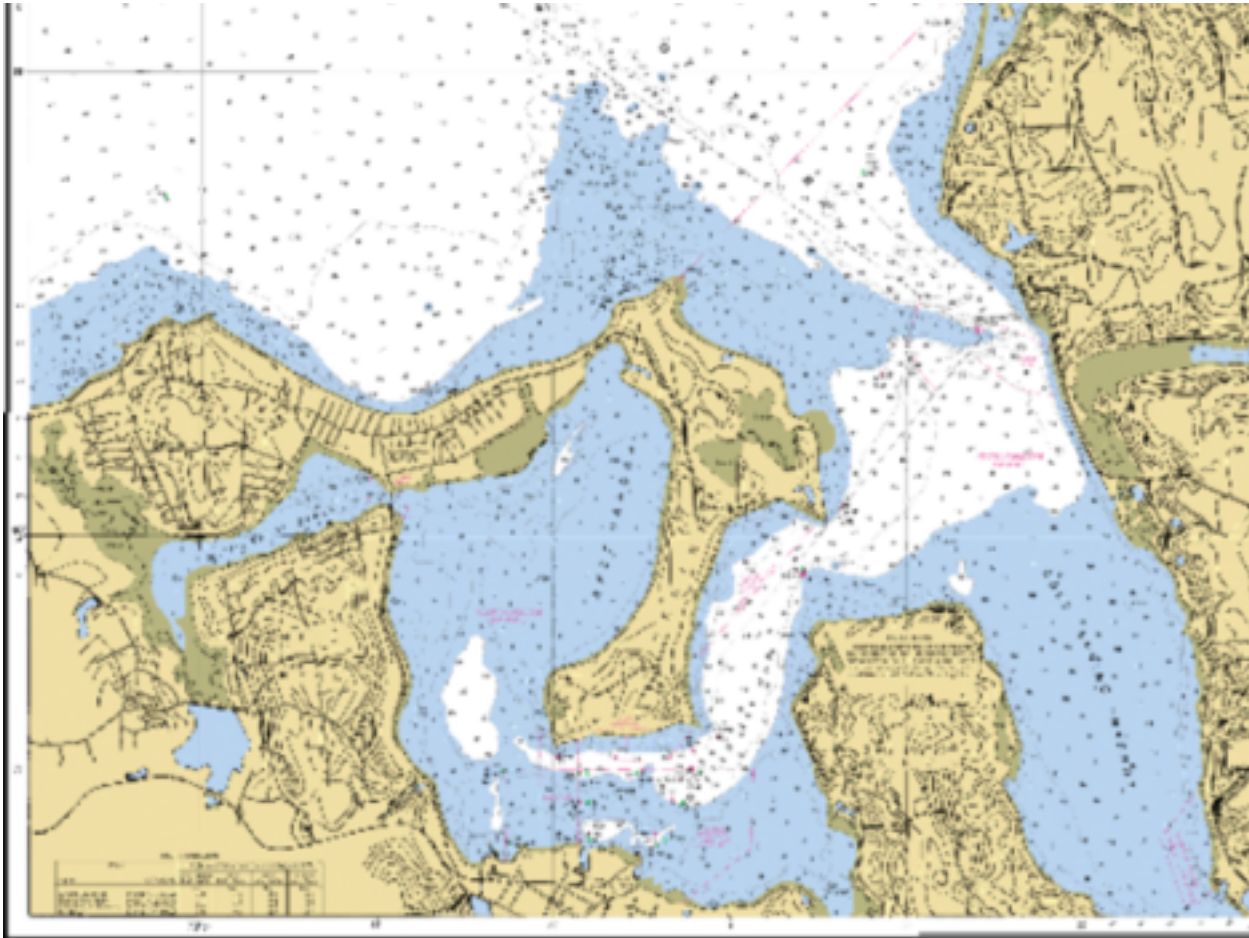
24    INSURANCE

Each participating boat shall be insured with valid third-party liability insurance with a minimum policy limit of US \$500,000 per occurrence or the equivalent.

25    CONTACTS

Elizabeth Shaw, OA and Race Management Consultant  
516 439-3044  
training@oakcliffsailing.org

ADDENDUM A - RACING AREA



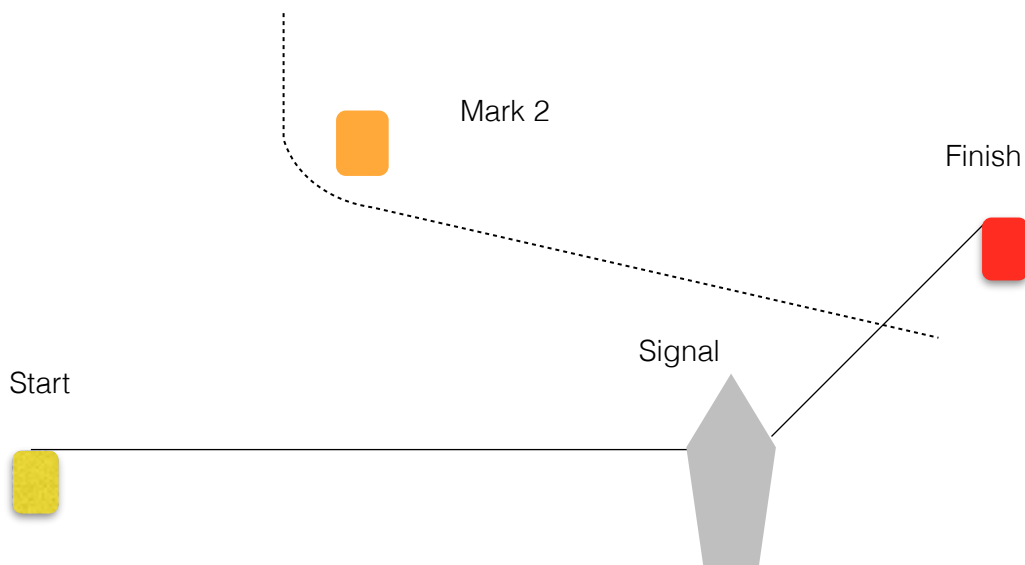
ADDENDUM B - COURSES



Mark 1 NACRA



Mark 1 49er/FX



Courses	
<b>Extended Leg (ECHO)</b>	Start, Mark 1P (Green), Mark 2P, Mark 1P (Green), Mark 2P, Finish
<b>Standard Leg (NO SIGNAL)</b>	Start, Mark 1P (Yellow), Mark 2P, Mark 1P (Yellow), Mark 2P, Finish