

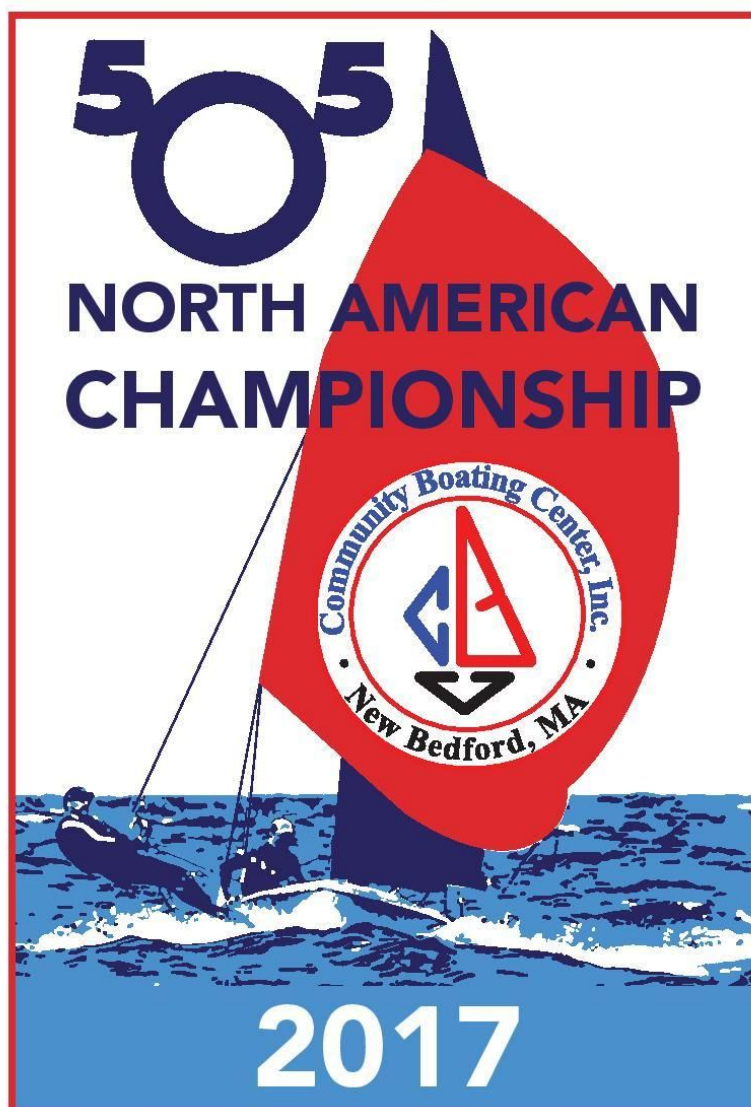
2017 International 505
North American Championship

New Bedford, MA, USA, June 15-18, 2017

SAILING INSTRUCTIONS

The co-organizing authorities (OA) are Community Boating Center, Inc (CBC) in conjunction with the 505 Class Association American Section.

Event website: <http://http://www.communityboating.org/505-north-americans/>



SAILING INSTRUCTIONS

2017 International 505 North American Championship

1 RULES

- 1.1 The regatta will be governed by the rules as defined in The Racing Rules of Sailing (RRS).
- 1.2 Boats may not protest other boats for breaking SI marked **[NP]** or the US Sailing prescription to RRS 40. This changes RRS 60.1(a). Penalties for breaking SI marked **[DP]**, class rules, or RRS 55 may be less than disqualification if the protest committee so decides.
- 1.3 **[NP] [DP]** RRS 40 is replaced with: "Competitors shall wear personal flotation devices, at all times when on the water, except briefly while changing or adjusting clothing or personal equipment. Wetsuits and dry suits are not personal flotation devices. Inflatable flotation devices are not acceptable."

2 NOTICES TO COMPETITORS

- 2.1 Notices to competitors will be posted on the official notice board located inside the Community Boating Center "Stucco" building. Notices, except for protest notices per SI 16.3 and 16.4, will also be posted on the event website.

3 CHANGES TO SAILING INSTRUCTIONS (SI)

- 3.1 Any change to the schedule of races will be posted by 1800 on the day before it will take effect.
- 3.2 Any other change to the sailing instructions will be posted no later than 90 minutes before the scheduled warning signal for the first race on the day it will take effect.

4 SIGNALS MADE ASHORE

- 4.1 Signals made ashore will be displayed on the flagpole in front of the Low Tide Yacht Club located on the grounds of Fort Taber.
- 4.2 When flag AP is displayed ashore, '1 minute' is replaced with 'not less than 60 minutes' in RRS "Race Signals".

5 SCHEDULE OF RACES

- 5.1 12 races are scheduled for the regatta.
- 5.2 The race committee may run up to 4 races per day.
- 5.3 The warning signal for the first race of the day on Thursday, June 15 through Saturday, June 17 will be at 1300. The warning signal for the first race of the day on Sunday June 18 will be at 1100.
- 5.4 No warning signal will be made after 1500 on Sunday, June 18.

6 CLASS FLAGS

- 6.1 The class flag will be a flag with the International 505 logo.

7 RACING AREAS

The racing area will be on Buzzards Bay directly off Fort Taber and west of the main shipping channel into New Bedford - Attachment A.

8 COURSES

- 8.1 Courses are shown in Attachment B.
- 8.2 No later than the warning signal, the race committee signal boat will display the course and approximate compass bearing to mark 1.
- 8.3 If one of mark 3s or 3p is missing, boats shall round the remaining gate mark to port.

9 MARKS

- 9.1 Marks 1, 1a, 2, 3s, and 3p will be yellow cylinders.
- 9.2 New marks, as provided in SI 13, will be orange tetrahedrons.
- 9.3 For the gate start, the starting marks will be the port limit mark (orange cylinder), the pathfinder, and the gate boat (displaying flag G).
- 9.4 For the fixed line start, the starting marks will be between an orange flag on the race committee boat and an orange cylinder on the port end.
- 9.5 The finishing marks will be a race committee boat on the starboard end and either a orange cylinder on the pin end or a race committee boat.

10 THE START

- 10.1 Races will be started using RRS 26.
- 10.2 Races will be started either by a gate start or a fixed line start. The race committee will attempt to use a gate start whenever reasonably possible.
- 10.3 The race committee signal boat will display the type of start no later than the warning signal. Flag G signifies a gate start (SI 11). Flag F signifies a fixed line start (SI 12).
- 10.4 To alert boats that a race will begin soon, an orange flag will be displayed, with one sound at least five minutes before a warning signal is displayed.

11 GATE START (FLAG G)

- 11.1 Prior to the warning signal, the race committee signal boat will display the time in seconds between the starting signal and the time at which the gate boat will stop at the starboard end of the starting line.

- 11.2 The race committee will appoint the pathfinder. The pathfinder will normally be the first boat 7th place or later in the previous race that is able to race and has not yet served as a pathfinder.
- 11.3 The sail number of the pathfinder will be posted on the official notice board for the first scheduled race of the day. For subsequent races each day, the sail number of the pathfinder will be posted on the race committee signal boat, as soon as practical after the completion of the previous race.
- 11.4 **[NP]** Prior to the preparatory signal the pathfinder shall report to the gate boat (displaying flag G and located near the race committee signal boat) and follow the race committee's instructions. If the pathfinder fails to do so, she will be disqualified without a hearing and shall be ineligible for any restart of that race. If the race is restarted that same day SI 11.12 applies to her. This changes RRS 63.1.
- 11.5 **[NP]** Within 5 seconds after the starting signal:
- (1) the pathfinder will begin a close--hauled port tack from the port limit mark.
 - (2) the gate boat will keep station close astern and slightly to leeward of the pathfinder.
- 11.6 The starting line (except for the pathfinder) will be between the port limit mark and the center of the stern of the gate boat.
- 11.7 All boats (except for the pathfinder) shall start on starboard tack after the pathfinder clears the port limit mark. RRS 29.1, Individual Recall, does not apply.
- 11.8 **[NP]** The pathfinder shall sail a close--hauled course until it is released by hail from the gate boat, after which the pathfinder has started, ceases to be a starting mark, and may continue or tack onto starboard tack.
- 11.9 After the release of the pathfinder, the gate boat will continue its course and speed until the gate has been opened for the period signaled in SI 11.1. It will then stop, make a long sound signal, drift for one minute, and signal the close of the gate by lowering flag G with a short sound signal.
- 11.10 **[NP]** A boat that has not started at the close of the gate will be scored DNS without a hearing. This changes 63.1 and A5.
- 11.11 While approaching the line to start, a boat shall:
- (1) not cause the pathfinder or gate boat to alter course or speed,
 - (2) not pass between the pathfinder and the gate boat,
- A boat that does so will be disqualified without a hearing and SI 11.12 will apply. This changes RRS 63.1.
- 11.12 If a boat has been disqualified according to SI 11.4 or 11.11 and the race is restarted on the same day, her sail number shall be displayed on the race committee signal boat for at

least 3 minutes prior to the new warning signal. A boat whose number has been displayed shall leave the starting area before the next warning signal; however, a boat breaking this rule may participate in the restarted race providing she advises the race committee prior to the warning signal that she intends to protest another boat and/or requests a redress in connection with the incident. If she does not then file a valid protest or request, or her protest is dismissed or she is not granted redress, she shall be scored a DNE for the race in question. This changes RRS 36, 62.2, 63.1 and Appendix A5.

12 Fixed Line Start (Flag F)

- 12.1 The starting line will be between staffs displaying an orange flag on the race committee boats at each end of the line.
- 12.2 A buoy may be attached to the race committee signal boat anchor line just below keel depth. This buoy is considered part of the race committee's anchor line.
- 12.3 **[NP]** A boat starting later than 5 minutes after her starting signal will be scored DNS without a hearing. This changes RRS A4.

13 CHANGE OF THE NEXT LEG OF THE COURSE

To change the next leg of the course, the race committee will lay a new mark (or move the finishing line) and remove the original mark as soon as practicable. When in a subsequent change a new mark is replaced, it will be replaced by an original mark.

14 THE FINISH

The finishing line will be between the staff displaying orange flag on the race committee finishing boat and the course side of the pin--end finishing mark.

15 TIME LIMITS

- 15.1 If no boat has passed mark 1 within 30 minutes of the start, the race will be abandoned.
- 15.2 If no boat sails the course and finishes within 80 minutes, the race will be abandoned.
- 15.3 Boats still racing and failing to finish within 20 minutes after the first boat sails the course and finishes, and not subsequently retiring, penalized or given redress, will be scored TLE (Time Limit Expired, see SI 17) without a hearing. This changes RRS 35, A4 and A5.

16 PROTESTS AND REQUESTS FOR REDRESS

- 16.1 Protest forms are available at the protest desk located on the 2nd floor of the SSA Clubhouse. Protests and requests for redress or reopening shall be delivered there within the appropriate time limit.
- 16.2 The protest time limit is 60 minutes after the official arrival of the race committee signal boat at the dock. The race committee will post its official arrival time on the notice board.
- 16.3 Notices will be posted on the official notice board no later than 30 minutes after the protest time limit to inform competitors of hearings in which they are parties or named as witnesses and

the location of the hearing. Hearings will be held as soon as practical after sailing.

- 16.4 Notices of protests by the race committee or protest committee will be posted on the official notice board to inform boats under RRS 61.1(b).
- 16.5 On the last scheduled day of racing a request for reopening a hearing shall be delivered
- (1) within the protest time limit if the requesting party was informed of the decision on the previous day;
 - (2) no later than 30 minutes after the requesting party was informed of the decision on that day.

This changes RRS 66.

- 16.6 On the last scheduled day of racing a request for redress based on a protest committee decision shall be delivered no later than 30 minutes after the decision was posted. This changes RRS 62.2.

17 SCORING

- 17.1 1 race shall be completed to constitute a series.
- 17.2 (a) When fewer than 6 races have been completed, a boat's series score will be the total of her race scores.
- (b) When from 6 to 9 races have been completed, a boat's series score will be the total of her race scores excluding her worst score.
- (c) When 10 or more races have been completed, a boat's series score will be the total of her race scores excluding her two worst scores.
- 17.3 The score (prior to application of other penalties) for boats scored TLE will be scored points equal to the number of boats that sail the course and finish within the finishing window plus two points by the race committee without a hearing. This changes RRS A4.2, A5, and A11.

18 [DP] [NP] SAFETY REGULATIONS

- 18.1 Check--out and check--in: When departing from launching area, boats shall pass between a support boat flying flag a yellow flag with "13" and Green Can "13", Old Bartlemy Buoy, off the east side of Fort Taber (leaving "13" to starboard). Mainsails should be up to allow identification of all boats. Likewise, when returning to the harbor, boats shall leave "13" to port.
- 18.2 A boat that retires from a race shall notify the race committee as soon as possible.
- 18.3 If the race committee signals flags N over A or N over H, all boats shall return to the harbor immediately.
- 18.4 While afloat, all boats shall carry a towline of at least 6mm in diameter and 10 meters in length.

- 18.5 A boat may not exercise right of way, cross in proximity to, or interfere with reasonable transit of the race area by commercial ships, tugs, or barges. Boats must take evasive action well in advance of a potentially dangerous situation. The US Coast Guard, ship captains, and bay pilots have been encouraged to report any incident they observe.
- 18.6 The race committee or protest committee may protest a boat for breaking SI 18.5 based on information received from any source. The protest time limit does not apply. This changes RRS 60.2, 60.3, and 61.3.

19 [DP] REPLACEMENT OF CREW OR EQUIPMENT

- 19.1 Substitution of competitors will not be allowed without prior written approval of the race committee.
- 19.2 Substitution of damaged or lost equipment will not be allowed unless authorized by the race committee. Requests for substitution shall be made to the race committee at the first reasonable opportunity.

20 EQUIPMENT AND MEASUREMENT CHECKS

A boat or its equipment may be inspected by an equipment inspector or measurer at any time for compliance with the class rules and sailing instructions. On the water, a boat can be instructed by an equipment inspector or measurer to proceed immediately to a designated area for inspection.

21 [DP] SUPPORT BOATS

- 21.1 All coach/support boats shall comply with the Support Boat Regulations published on the event website.
- 21.2 Competitors shall not have any contact whatsoever with an unregistered coach/support boat from the time a boat leaves the harbor until returning to the harbor after racing. This includes coach/support boats whose registration has been revoked by the organizing authority or race committee.

22 [DP] TRASH DISPOSAL

Boats shall not intentionally put trash in the water. Trash may be placed aboard support and race committee boats. RRS 41 is changed to permit a boat to place trash on a race committee boat after her preparatory signal.

23 [DP] BERTHING

When ashore, all boats must be stored on their dollies within the designated storage area.

24 [DP] RADIO COMMUNICATION

- 24.1 The race committee intends to use VHF radio channel 72 to communicate information to

competing and/or support boats. Competitors are encouraged to carry VHF radios for safety.

- 24.2 Except in an emergency, a boat shall neither make radio transmissions while racing nor receive radio communications not available to all boats. This restriction also applies to mobile telephones.

25 PRIZES

- 25.1 Prizes will be awarded to at least the top five teams overall.
- 25.2 Perpetual awards will also be awarded in accordance with the 505 traditions.

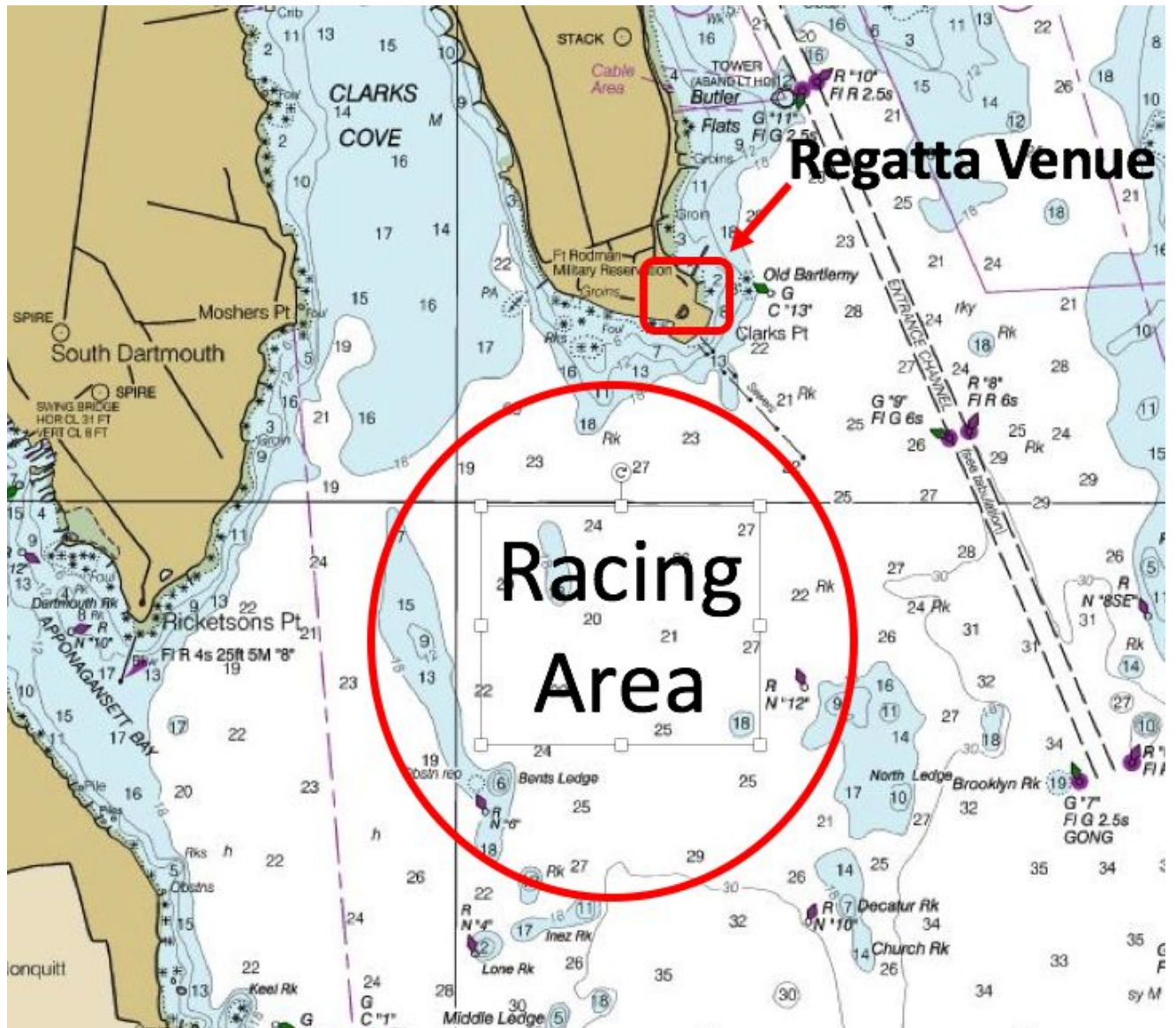
26 DISCLAIMER OF LIABILITY

Competitors participate in the regatta entirely at their own risk. See RRS 4, Decision to Race. The organizing authority will not accept any liability for material damage or personal injury or death sustained in conjunction with or prior to, during, or after the regatta.

27 INSURANCE

Each participating boat shall be insured with valid third--party liability insurance with a minimum cover of \$300,000 USD per event or the equivalent.

ATTACHMENT A -- RACING AREA



ATTACHMENT B - COURSES

Course	Order of Rounding
1	1 - 1a - 3s/3p - 1 - 1a - 2 - 3p - 1 - 1a - Downwind Finish
2	1 - 1a - 3s/3p - 1 - 1a - 2 - 3p - 1 - 1a - 3s/3p - Upwind Finish
3	1 - 1a - 3s/3p - 1 - 1a - 3s/3p - Upwind Finish
4	1 - 1a - 3s/3p - 1 - 1a - Downwind Finish
	Note: Diagram is not to scale

