



2010 J/80 World Championship

October 3 - 8, 2010

Newport, Rhode Island, USA

NOTICE OF RACE

1 ORGANIZERS

The event will be organized by:

- Sail Newport (Organizing Authority) (SN)
- Ida Lewis Yacht Club (Host Yacht Club) (ILYC)
- J/80 USA Class Association in cooperation with J/80 International Class Association

2 RULES

- 2.1 This Regatta shall be governed by the rules as defined in the Racing Rules of Sailing (RRS), the J/80 Class Rules, this Notice of Race, the Sailing Instructions and any amendments thereto. Class Rules shall not be altered by the NOR or Sailing Instructions, this changes rule 87.
- 2.2 Boats shall comply with the J/80 Class Rules and the designer and manufacturer's original standards, which shall prevail in the event of conflict.
- 2.3 The Prescriptions of US SAILING shall apply.
- 2.4 A boat and her crew shall comply with ISAF Regulation 20, Advertising Code. Competitors and support boats may be required to display event-supplied flags.
- 2.5 The Two-Turns Penalty per rule 44.2 may be amended in the Sailing Instructions.
- 2.6 The official language is English.

3 ELIGIBILITY

- 3.1 The Regatta is open only to the members of J/80 Class as defined by the J/80 Class Rules and in compliance with their association for the year 2010.
- 3.2 Each J/80 National Class Association shall confirm entrant membership status through the Measurement Website www.j80measurement.com.

3.3 Crew substitution during the event may only be done with the agreement of the International Jury.

4 ENTRIES AND FEES

4.1 Entries shall be made only online via the Official Entry Form at www.j80worlds2010.org. Any entries using other than the online Official Entry Form will not be accepted.

4.2 Entry opens on the official website (www.j80worlds2010.org) on 1 May. The Entry Fee shall be U.S \$675 and paid electronically through the website. After 1 September, late entries will be accepted but will incur a late fee of U.S. \$100 making the total Late Entry Fee U.S. \$775. No entries will be accepted after 15 September.

4.3 Entry Fee includes:

- One launch and one haul-out of J/80 at SN.
- Boat dockage/rafting from 1 October until 10 October at 1600.
- Trailer storage from 1 October until 10 October at SN.
- Social passes for four crew members to Opening Ceremony, after-race socials, Prize-Giving Dinner and Closing Ceremony. (Additional social passes will be available to purchase on the website and at the Duty Desk during the regatta).

4.4 A boat's entry is only valid when the Entry Fee is paid fully and all other requirements of registration have been met.

4.5 The organizers reserve the right to accept entries in exceptional cases.

4.6 In the event of entry cancellation before 16 September, the entry fee will be refunded minus a U.S. \$30 processing fee. If an entry boat does not attend the event, and no notice of cancellation has been received, no fees will be refunded.

5 REGISTRATION

Registration shall be complete once the following requirements have been met:

- a. Official Entry Form is complete and Entry Fee and any Late Fee is paid.
- b. The Declaration of Conformity is on file with the organizing authority.
- c. Owner, charterer, and alternate helmsman dues for 2010 is/are paid and on file with the international class.
- d. Skipper and crew weigh-in are complete (class rule Part III H5).
- e. Civil liability and media rights waivers signed and lodged with the organizing authority.
- f. Measurement form filled in and lodged with the organizing authority.
- g. Crew classification completed.
- h. J/80 Owner Regatta Declaration (class rule Part III H4) is submitted.
- i. Insurance requirements and proofs have been satisfied.

6 SCHEDULE

DATE	TIME	ACTIVITY
Friday, 1 October		All Boats may arrive at SN
Sunday, 3 October	1000-1800	Check-in Crew and boat weighing Sail Measurement Masting and Launching
Monday, 4 October	0900-1400	Check-In Crew and boat weighing Sail Measurement Masting and Launching
	1200-1800	J/80s move to NYCM
	1330	Practice Race
	1800	J/80s to be docked at NYCM
	1800	Opening Ceremony at NYCM
Tuesday, 5 October & Wednesday, 6 October & Thursday, 7 October	1030	Warning Signal (One or more races)
	1800	Day's prize-giving ceremony
Friday, 8 October	1030	Warning Signal (One or more races)
	After Racing	J/80s must return to SN for dockage
	1800	Dinner, Prizes, Closing Ceremony

7 MEASUREMENT AND INSPECTION

- 7.1** Competitors shall be allocated a date and time for weighing of the boat, the crew and for sail measurement. All boats shall be made available and accompanied by two owner's representatives during their scheduled boat weighing and sail measurement operations.
- 7.2** Fundamental Measurement - Sails. All sails shall be fundamentally measured as detailed in *ERS* and class rules PRIOR to the event. They shall be certified in accordance with class rule G.2.2. and carry royalty tags in accordance with class rule G.2.3. Each J/80 National Class Association (NCA) shall present sail measurement certificates which comply with the J/80 International Class Rules by governing the entry in the Measurement Website www.i80measurement.com
- Sails. All sails to be used during the event shall be presented during the measurement period to the measurement team.
 - All boats shall be presented for weighing and measurement at the times in the Schedule and in accordance with class rule C.5.1(a). Measurement outside of these

times may be authorized, in exceptional circumstances by the race committee.

- Measurement or equipment checks may be conducted afloat or ashore before or after any race.
- Crew weigh-in will take place during hours posted on the Schedule.

7.3 The final authority on all class rule issues will be the Technical Committee.

8 SAILING INSTRUCTIONS

Will be available as of 3 October at 1000 at Check-in.

9 RACE AREAS AND COURSES AND NUMBER OF RACES

9.1 Sailing will take place on Rhode Island Sound and Narragansett Bay.

9.2 Courses will be windward/leeward.

9.3 The number of races to be run each day shall remain at the discretion of the race committee.

9.4 A maximum of 11 races will be run in the series.

10 INTERNATIONAL JURY

An international jury will be appointed in accordance with RRS 91(b). Decisions shall be final in accordance with RRS 70.5.

11 SCORING

11.1 The Low Point Scoring System as described in Appendix A4 of the RRS shall apply.

11.2 If less than six races are completed a boat's final score will be the total of her races scored. If six or more races are completed, the worst score shall be excluded. Three completed races are required to constitute a series.

12 PRIZES

12.1 Daily prizes shall be awarded at the discretion of the organizers at the end of each day of racing.

12.2 During the Closing Ceremony, prizes shall be awarded to the top 10 boats.

12.3 Other prizes may be awarded at the discretion of the organizers.

13 DOCKAGE

13.1 Dockage has been reserved for the event from 1 October to 10 October. Boats may be required to raft and are advised to bring extra fenders and lines.

13.2 Dockage fees during that period are included in the Entry Fee.

13.3 Each boat shall be allocated a specific docking area. Boats shall be kept at SN between 1 October until 4 October. On 4 October, between the hours of 1200 and 1800, boats shall be moved to and docked at the NYSM. Boats shall remain at the NYCM until the racing series ends or until 8 October at 1200. After 1200 on 8 October, or after racing, boats shall return to SN and may dock until 1600 on 10 October.

14 HAUL-OUT RESTRICTIONS

Boats shall not be hauled out after 1500 on 4 October until the end of the regatta without prior written permission of the international jury.

15 DIVING EQUIPMENT AND PLASTIC POOLS

Underwater breathing apparatus and plastic pools or their equivalent shall not be used around competitors' boats between the preparatory signal of the first race and the end of the series.

16 RADIO COMMUNICATIONS

16.1 Except in an emergency, a boat shall neither make radio transmissions while racing nor receive radio communication not available to all boats. This restriction also applies to mobile phones and data transmission devices.

16.2 The VHF communication channel will be stated in the Sailing Instructions.

17 SUPPORT BOATS

17.1 Support boats shall be registered with the event organizers, before the end of the Check-in schedule.

17.2 Each participating support boat shall be insured with valid third-party liability insurance with a minimum coverage limit of \$500,000 U.S. Evidence of such insurance, stipulating amount of coverage and validating the policy's effectiveness while navigating in Northeast U.S. waters, must be provided in English and sent electronically to kendra@jboats.com by 17 September at 1700. Insurance is not approved until Kendra Muentner replies via email that the policy has been received, reviewed and accepted as valid.

17.3 Insurance for support boats can be purchased by contacting Sarah Davidson at Gowrie Group, One-Design Insurance Program. Contact Sarah Davidson via email at sarahd@gowrie.com or by telephone at +1.860.399.3627. The deadline for purchase of insurance is 17 September at 1700.

17.4 Support boats that do not meet the insurance requirements (Including U.S. boats) may not participate in the regatta.

17.5 All support boats must make their own dockage arrangements and be advised there is a fee for dockage both at SN and at the NYCM. For dockage arrangements at Sail Newport, email: vinnie@sailnewport.org. For support boat dockage arrangements at the NYCM contact reservations@newportyachtingcenter.com.

17.6 Support boats may be required to carry event flags as provided by the organizing authority.

18 INSURANCE – COMPETITOR BOATS

Each participating J/80 shall be insured with valid third-party liability insurance with a minimum coverage limit of \$500,000 U.S. Evidence of such insurance, stipulating amount

of coverage and validating the policy's effectiveness while competing in Northeast U.S. waters, must be provided in English and sent electronically to kendra@jboats.com by 17 September at 1700. Insurance is not approved until Kendra Muentner replies via email that the policy has been received, reviewed and accepted as valid.

- 18.1** Insurance for the event can be purchased by contacting Sarah Davidson at Gowrie Group, One-Design Insurance Program. Contact Sarah Davidson via email at sarahd@gowrie.com or by telephone at +1.860.399.3627. The deadline for purchase of insurance is 17 September at 1700.
- 18.2** Boats that do not meet the insurance requirements (Including U.S. boats) may not sail in the regatta.
- 19 DISCLAIMER**
- 19.1** Competitors agree to be bound by the International Sailing Federation Racing Rules of Sailing, by the Sailing Instructions and the Notice of Race. The class rules as well as the regulations of the invitation to the competition and the sailing instructions are to be complied with and are expressly recognized.
- 19.2** Competitors participate in the regatta entirely at their own risk. See Rule 4, Decision to Race. The organizing authority will not accept any liability whatsoever for material damage or personal injury or death sustained in conjunction with or prior to, during, or after the regatta.
- 19.3** Skippers shall bear full responsibility for the behavior of the yacht's crew, representatives and guests.
- 19.4** U.S. law shall prevail.

FURTHER INFORMATION:

HEADQUARTERS

The Official Regatta Headquarters will be at Sail Newport, Fort Adams State Park, 60 Fort Adams Drive, Newport, RI between 1 October and 4 October at 1800. As of 4 October at 1800, The Official Regatta Headquarters will be located at the Newport Yachting Center Marina (NYCM), Commercial Wharf, Newport, RI.

LAUNCHING AND HAUL-OUT

Hoist: During launch boats will be permitted to hang for one minute only to clean trailer pad marks off the hull. While boat is on the hoist, boat trailer must be kept under the boat at all times except when boat is fully over the water. Competitors shall supply their own tested center point lift strap and adequate crew to launch and haul safely.

MEDIA AND MEDIA RIGHTS

The event Media Center will be at the Regatta Headquarters. Media representatives and television crews intending to attend or to cover the event are requested to register through the event website www.j80worlds2010.org.

The organizing authority may request, at no cost to competitors, the installation of GPS devices, onboard video cameras or similar equipment for the purposes of the official

television production.

Competitors grant the organizers, the organizing authority, the host yacht club, J/80 Class Associations and representatives of the entities above the right to exploit their image and that of their boat in text and video form to be broadcast by the press, television or internet (non-exhaustive list). The editorial or advertising content may freely use the competitors' names and biographies.

SAILOR ADVISORY

Competitors are advised to have suitable personal gear and personal flotation for sailing conditions in October including low water temperature and high seas.

CONTACT INFORMATION:

Event Coordinator

Contact: Kendra Muentner
email: kendra@jboats.com
Tel: +1.401.846.8410
Web: www.jboats.com

Event Chairman

Contact: Jeff Johnstone
email: jeffj@jboats.com
Tel.: +1.401.846.8410
Web: www.jboats.com

J/80 Measurement

Contact: Greg Buck
email: gbuck@sailandski.com
Telephone: +1.401.682.2010

J/80 Charters

Contact: Jeff Sammis
email: jpsail@gmail.com
Tel: +1.207.671.3290

Sail Newport, Inc.

60 Fort Adams Dr.
Newport, RI 02840
Tel: +1.401.846.1983
Web: www.sailnewport.org

J/80 International Class Assoc.

email: www.j80info@j80.org
Web: www.j80.org

Ida Lewis Yacht Club

Wellington Ave.
Newport, RI 02840
Tel: +1.401.846.1969
Web: www.ilyc.org

US J/80 Class

Contact: Kristen Robinson, President
email: kristeneyc@yahoo.com
Tel: +1.516.816.3856
Web: www.j80.org/j80usa.php

Sail Newport Regatta Director

(Race Committee and Jury):
Contact: Kim Cooper
email: kim.cooper@sailnewport.org
Tel: + 1.401.846.1983
Web: www.sailnewport.org

Sail Newport Logistics

(Hoist and Storage):
Contact: Vinnie Pattavina
email: vinnie@sailnewport.org
Tel: + 1.401.846.1983
Web: www.sailnewport.org

Accommodation Assistance:

Debbie Miller
Email: info@bbsnewport.com
Tel & Fax: 401-846-1828

Newport Tourism:

Where to stay, eat and play in Newport
Web: www.gonewport.com

RACE AREAS

(Not to be used for navigation)

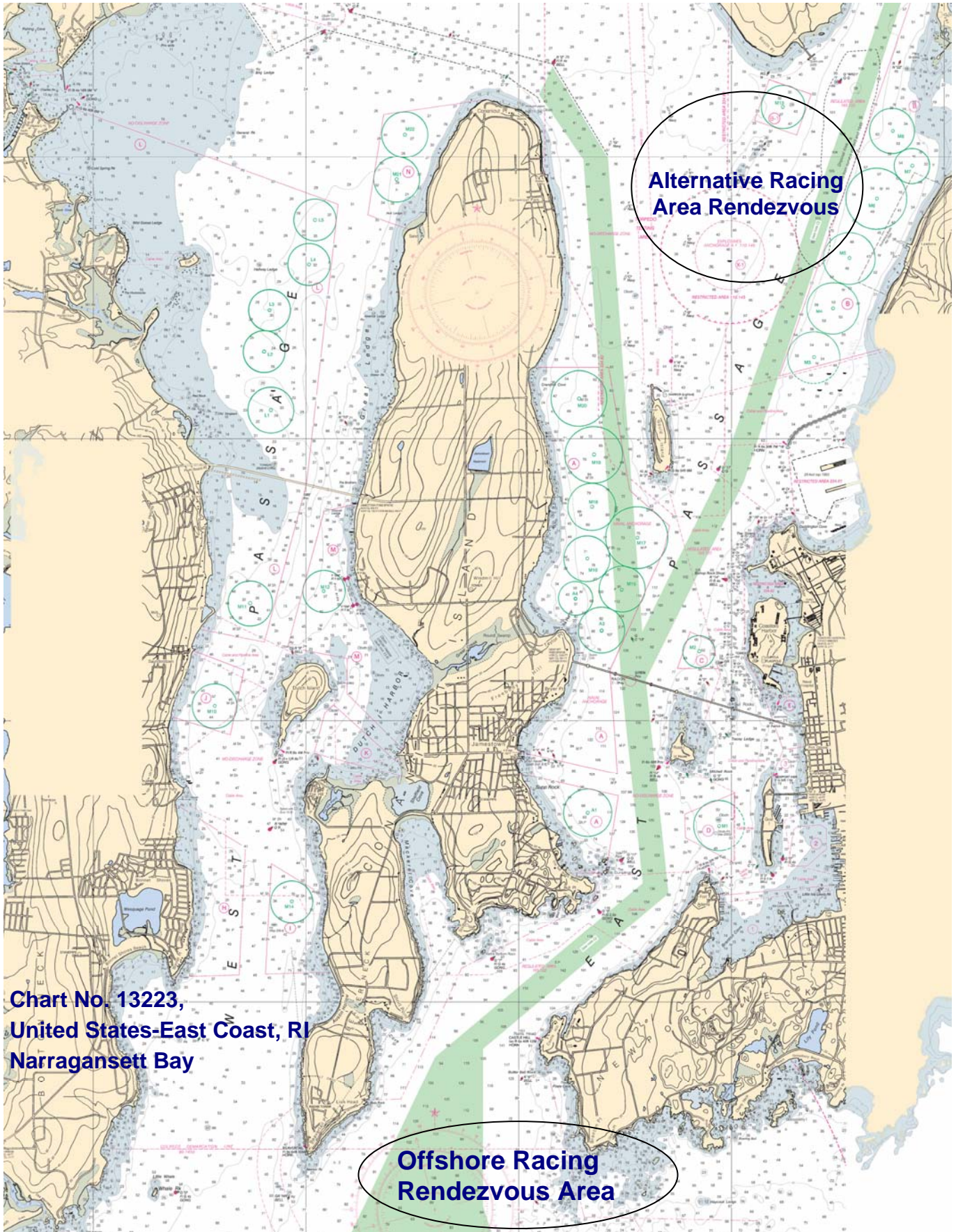


Chart No. 13223,
United States-East Coast, RI
Narragansett Bay

Offshore Racing
Rendezvous Area

Alternative Racing
Area Rendezvous