



PRELIMINARY
Mid-January “J” Fest 2018
NOTICE OF RACE
January 19, 20, 21, 2018
Hosted by St. Petersburg Yacht Club
St. Petersburg, Florida
Organizing Authority – St. Petersburg Yacht Club
Website - www.spyc.org

1. RULES

The regatta shall be governed by the rules as defined by the current *Racing Rules of Sailing* and the Class Rules for J/70's, J/88's, J/111's, and Orc. Only the US Sailing Prescriptions to RRS 40, 67, and 76.1 and added Rules 61.4 and 82 shall apply.

- 1.1 RRS 63.7 shall be replaced by – “If there is a conflict between the Notice of Race (NOR) and the Sailing Instructions (SIs), the Sailing Instructions shall apply.” This changes RRS 63.7
- 1.2 The Equipment Rules of Sailing shall apply.
- 1.3 The Jury may impose suitable penalties, other than Disqualification, for violations of the Class Rules, or other RRS Part 2 rules. This changes RRS 64.1.

2. ADVERTISING

- 2.1. Boats may be required to display advertising chosen and supplied by the Organizing Authority (OA), in accordance with RRS 80 and World Sailing Regulation 20.

3. ELIGIBILITY AND ENTRY

- 3.1 The regatta is open to all boats of the J/70, J/88, J111, and ORC Classes that conform to the Class Rules. A minimum of 5 Entries will constitute a class.
- 3.2 Eligible boats may enter by completing the online entry form and paying the required fees.
- 3.3 The entry deadline is 2300 16 January 2018. Entries will not be accepted after the entry deadline.
- 3.4 A maximum of 80 boats will be accepted as confirmed entries based on the order in which their entry form and required fees are received. Additional entries will be put on a waiting list in the order in which they are received.
- 3.5 Boats that have entered and withdraw, in writing prior to 2300 3 January 2018, will receive a refund of their entry fee less a \$25 processing fee. Boats withdrawing after 2300 3 January 2018 will receive a refund less a \$200 processing fee.
- 3.6 Boats that are on the waiting list will be notified that their entry has been accepted as space becomes available. If their entry cannot be accepted, their entry fee will be refunded in full.
- 3.7 To complete the advanced registration process, the following required information must be entered online via the regatta website:
 - The crew list with valid World Sailing Sailor ID and World Sailing Classification for drivers and all crew for J/70, J/88, and J/111.
 - Insurance information per NOR 20.

4 CLASSIFICATION (Does not apply to ORC Class)

- 4.1 In accordance with RRS 79, World Sailing Regulation 22, Sailor Classification Code will apply.
- 4.2 For Corinthian Awards, all drivers and all crew shall be current World Sailing Group 1 competitors and shall register their World Sailing Sailor ID and classification via the regatta website by the end of check-in.
- 4.3 A representative of the World Sailing Sailor Classification Commission may be present during check-in and may perform spot checks.
- 4.4 Family Division
- Must have two or more family members
 - Must have two generations represented
 - Must qualify for Corinthian

5 FEES

5.1 The entry fee shall be:

- US \$300 J/70 for entries received and fees paid before 2300 3 January 2018.
- US \$350 J/88 for entries received and fees paid before 2300 3 January 2018.
- US \$450 J/111 for entries received and fees paid before 2300 3 January 2018
- US \$450 ORC for entries received and fees paid before 2300 3 January 2018
- Add **\$100 Late Fee** for entries received and fees paid **after** 2300 3 January and **before** 2300 16 January 2018. All prices are inclusive.

5.2 The entry fee includes:

- Invitation to all social events for the Owner and all Crew members. (Extra Event Tickets will be available.)
- In water dockage from start of registration until the end of the regatta (See NOR 15 &16)
- Three regatta race days
- Awards and prizes
- Full guest privileges at the St. Petersburg Yacht Club, including all on site dining and bar services using an SPYC guest card obtainable on line at www.spyc.org click on Sailing then Guest Card. We request that the form be filled out at least 48 hours in advance of the event, then your card will await you at the front desk. Florida Council of Yacht Clubs Reciprocity will be honored with the presentation of your club's card.

6 SCHEDULE

Thurs 18 January	1600-1730 1800	Registration-SPYC Ballroom Competitors Meeting & Cookout at the SPYC Tiki Hut Cook Out
Fri 19 January	1000	Racing – First Signal
Sat 20 January	1000 1800	Racing – First Signal Social
Sun 21 January	1000 1400 ASAP	Racing – First Signal No warning signal after this time Haul out after racing and Snacks and Awards at SPYC

7. SAILING INSTRUCTIONS

Sailing Instructions will be available no later than 1600 on Thursday 18 February 2018 at the St. Petersburg Yacht Club and maybe online at the regatta website

8. VENUE

Attachment A1 shows the location of St. Petersburg Yacht Club and the racing area in Tampa Bay.

9. THE COURSES

The courses to be sailed will be a windward / leeward configuration as described in the Sailing Instructions.

10. PENALTY SYSTEM

10.1 Unless the course is shortened to finish at the windward mark, penalties while in the zone of the windward mark or on the offset leg may be delayed and taken as soon as possible on the downwind leg. This changes RRS 44.2.

11. SCORING

11.1 Scoring will be in accordance with RRS 90.3 and Appendix A2.

11.2 When five or more races have been completed a boat's series score will be the total of her race scores excluding her worst score.

11.3 Three (3) completed races during the series are required to constitute a Regatta.

12. SUPPORT BOATS

12.1 The Sailing Instructions may limit the activities of support boats.

12.2 Support boats and operators shall register with the OA during check in.

12.3 While on the water support boats shall display prominently the flag by the OA.

13. BERTHING

13.1 Boats shall be kept in their assigned places as directed by the OA and RC when either afloat or ashore.

13.2 The use of dehumidifiers is prohibited.

14. HAUL OUT RESTRICTIONS

14.1 All boats shall be afloat by 1800 Thursday 18 January 2018.

14.2 Boats shall not be hauled out and rudders shall remain in the water in their normal position until after a boat finishes their regatta, except with and according to the terms of prior written permission of the Race Committee.

15. RADIO COMMUNICATION

15.1 Except in an emergency, a boat shall neither make radio transmissions while racing nor receive radio communication not available to all boats. This restriction also applies to mobile phones and any other device capable of sending and receiving any type of communication with the exception of GPS devices.

15.2 The Race Committee will endeavor to hail each yacht that is OCS on the VHF radio. The timing of such hail, the sequence of the hails, the failure to make the hails, or for the competitor to hear such an announcement shall not be grounds for granting redress. This changes RRS 62.1(a).

16. PRIZES

16.1 Prizes will be given to the top three finishers overall and the top three finishers in the Corinthian Division (see NOR 4.2)

16.2 Additional prizes may be awarded at the discretion of the OA.

17. DISCLAIMER OF LIABILITY AND WAIVERS

17.1 Competitors participate in the regatta entirely at their own risk. See RRS 4, Decision to Race.

17.2 The Organizing Authority will not accept any liability for material damage or personal injury or death sustained in conjunction with or prior to, during, or after the regatta. Each person racing on board a boat entered in the regatta shall sign a waiver and release of liability at or before on-site registration and check-in. The St. Petersburg Yacht Club, the J Class Association and their members, volunteers, employees, officers and agents shall not be responsible for any loss, damage or the participation of any boat.

17.3 Skippers' waivers resubmitted with the on-line entry form. Crew waivers are submitted on-line at: www.spyc.org then link to Yacht Scoring site.

17.4 A link to the crew waivers is also available on St. Petersburg Yacht Club website at www.spyc.org. This will link you to Yacht Scoring site.

17.5 It is the skipper's obligation to ensure that each crew member's waiver is reflected on the waiver list prior to closing of on-site registration and check-in.

18. INSURANCE

Each participating boat shall be insured with a valid third-party liability insurance with a minimum coverage of US \$300,000 per event or the equivalent. A copy of insurance company documents establishing such coverage is current through the end of the regatta shall be supplied as part of completing check in.

Further Information:

A. Storage and Launching

1. Contact the Sailor's Wharf, Inc. jopie@sailorswharf.com website www.sailorswharf.com, phone 727-823-1155 Ext 206.

B. Vessel transportation:

1. Those who want to have their J/Boat transported, please contact Joule Yacht Transportation's Matt Jensen at 800-237-0727 Ext 116, mjensen@jouleyacht.com

C. Guest Cards & Social Events

1. SPYC requests that everyone who does not have reciprocity get a Guest Card using a Visa or MasterCard credit card. This can be done online (www.spyc.org). On the Home page click on the menu item "Sailing", Scroll down and click on "SPYC Guest Card". Fill out the information and click "Submit". There is now a direct link to the guest card www.spyc.org/guestcard
2. The Club requests you and your crew members to submit this form at least 48 hours in advance of the event.
3. Everyone may pick up their cards at the Front Desk at SPYC upon arrival.
4. ***Extra Social Event Tickets can be purchased.***

D. Hotel-Motel Accommodations near SPYC:

1. Go to the SPYC website at www.spyc.org .
2. Click on Sailing, then regattas scroll down to the bottom of the page, click on Hotels

E. Contacts for this event are:

George Pennington
Cell 727-580-5431
Email epennin09@earthlink.net

[See Attachment A1](#)

[Next Page for](#)

[Course Area](#)

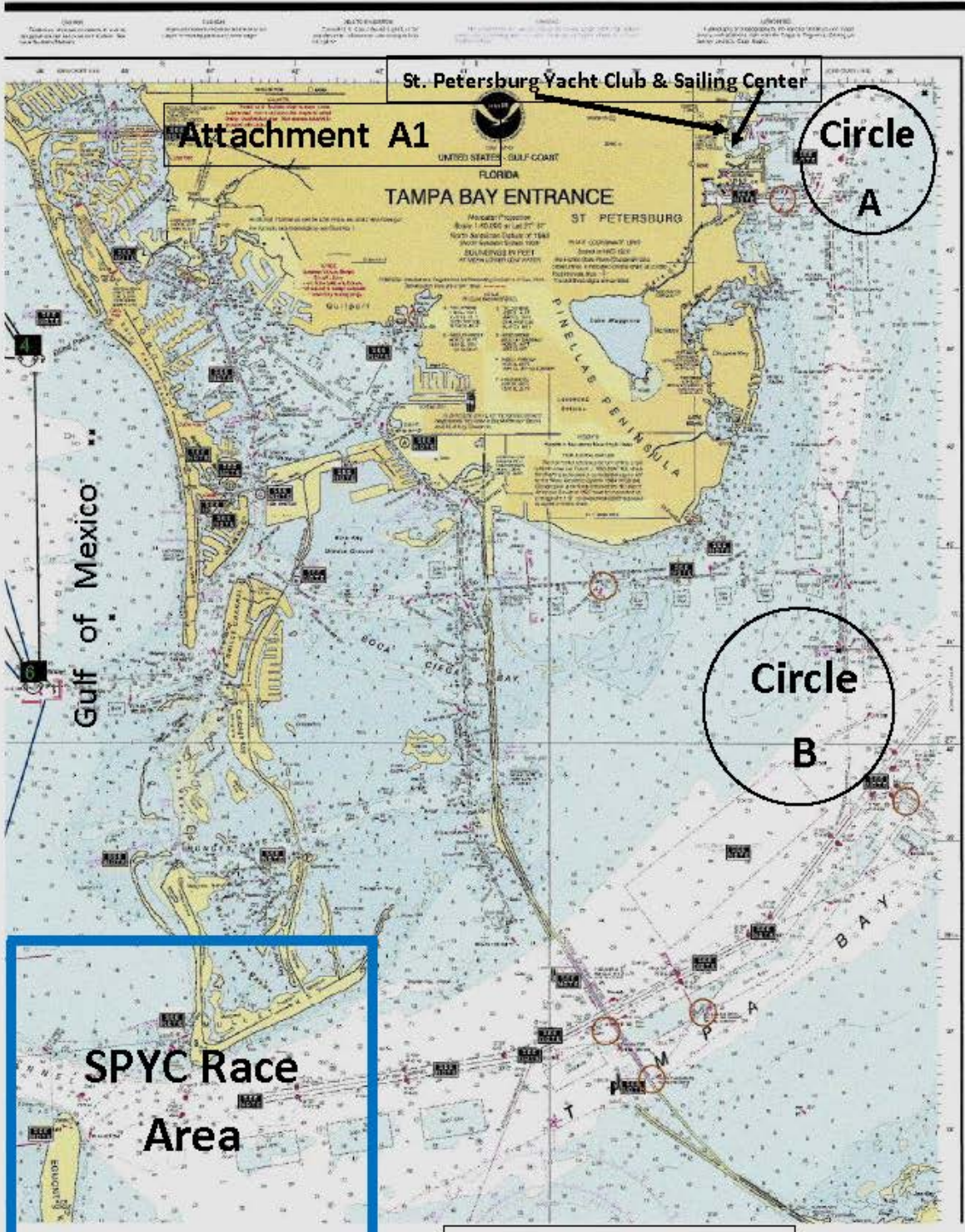


Chart Name: TAMPA BAY ENTRANCE
 Chart ID: 11415 1
 Top Left: 27° 47' 34" N 82° 46' 24" W
 Bottom Right: 27° 35' 4" N 82° 34' 59" W

These Areas are the approximate locations of the Sailing Area
 Not be used for Navigation

© MAPTECH, INC.