



NYYC One-Design Regatta

**Newport, Rhode Island
June 30 – July 1, 2018**

SAILING INSTRUCTIONS

1 ORGANIZING AUTHORITY

The Organizing Authority (OA) is the New York Yacht Club Regatta Association.

2 RULES

2.1 The regatta will be governed by the 'rules' as defined in the current Racing Rules of Sailing (RRS).

2.2 Etchells Class: The rules of the International Etchells Class Association will apply.

2.3 Melges 24 Class: The rules of the Melges 24 Class will apply.

2.4 J/70 Class: The rules of the J/70 Class will apply.

2.5 If there is a conflict between languages, the English text will take precedence.

2.6 If there is a conflict between rules or regulations, other than RRS, the sailing instructions will prevail. This changes RRS 63.7.

2.7 All competing boats shall carry a handheld VHF radio for safety purposes and Race Committee communication.

3 COMMUNICATION WITH COMPETITORS

3.1 Notices to competitors will be posted on the Official Notice Board located at the New York Yacht Club Sailing Center and may also be posted on the event website at www.nyyc.org.

3.2 VHF Channels - The Race Committee VHF channel for each circle is shown below:

a) Blue Circle VHF Channel 72

b) White Circle VHF Channel 71

4 CHANGES TO SAILING INSTRUCTIONS

Any change to the sailing instructions will be posted before 0900 hours on the day it will take effect, except that any change to the schedule of races will be posted by 2000 hours on the day before it will take effect.

5 SIGNALS MADE ASHORE

5.1 Flag signals will be flown from the western yardarm at Harbour Court.

5.2 When flag AP is displayed ashore, '1 minute' is replaced with 'not less than 60 minutes' in race signal AP. This changes RRS Race Signals.

5.3 When flag Y is displayed ashore, RRS 40 applies at all times while afloat. This changes RRS Part 4 Preamble.

11 THE START

- 11.1** The starting line will be between a staff displaying an orange flag on the starboard end signal boat and a yellow inflatable mark OR a staff displaying an orange flag on the port end signal boat.
- 11.2** A boat starting later than 5 minutes after the starting signal will be scored DNS. This changes RRS 63.1, A4.1 and A.5.
- 11.3** The Race Committee will attempt to notify OCS boats by radio on their respective circle VHF channel. Failure of equipment, failure to hear a hail, delay in hailing or the order in which hails are given will not be grounds for redress. This changes RRS 62.1(a).

12 CHANGE OF THE NEXT LEG OF THE COURSE

- 12.1** To change the next leg of the course, the Race Committee will lay a new mark (or move the finishing line to a new position) and remove the original mark as soon as practicable. When in a subsequent change a new mark is replaced, it will be replaced by an original mark.
- 12.2** The Race Committee may change the course by up to five degrees in bearing and/or 0.2 nm in length without a signal or change of mark color. This changes RRS 33.
- 12.3** In the event of a windward change of course, mark 2 will not be set.

13 THE FINISH

- 13.1** The finishing line for Course 4 will be between a staff displaying a blue flag on the Race Committee signal vessel and a green inflatable mark OR a staff displaying a blue flag on a Race Committee vessel.
- 13.2** The finishing line for Course 5 will be between a staff displaying a blue flag on the Race Committee vessel at the starboard end and the course side of the green inflatable port-end finishing mark located approximately .1 nautical mile to windward of mark 1.

14 PENALTY SYSTEM

- 14.1** Appendix V will apply.
- 14.2** A boat that has taken a penalty shall complete an online penalty acknowledgement form or a paper form available from the Jury Secretary and submit/file it with the Jury Secretary no later than the end of protest time.
- 14.3** For breaches of the rules other than Part 2, the protest committee may award a lesser penalty than DSQ. This changes RRS 64.1.

15 TIME LIMITS

- 15.1** The time limit for the first boat to sail the course and finish will be three hours from the starting signal.
- 15.2** If no boat has passed their first windward mark 45 minutes after the starting signal, the race shall be abandoned.
- 15.3** Boats failing to finish within 30 minutes after the first boat sails the course and finishes will be scored Did Not Finish. This changes RRS 35, A4.1 and A.5.

16 PROTESTS AND REQUESTS FOR REDRESS

- 16.1** Protest forms are available online or at the race office in the New York Yacht Club Sailing Center. Protests shall be delivered to the Jury Secretary within one hour of the docking time of the Race Committee signal boat after the last race of the day. This time will be posted on the Official Notice Board. This changes RRS 61.3 and 62.2.
- 16.2** Notices will be posted within 30 minutes of the protest time limit to inform competitors of hearings in which they are parties or named as witnesses. Hearings will be held in the Jury Room at the New York Yacht Club Sailing Center on each day beginning as soon as possible.
- 16.3** Notices of protests by the Race Committee or the jury will be posted within the protest time limit on the Official Notice Board to inform boats under RRS 61.1(b).
- 16.4** Appendix T will apply.
- 16.5** Breaches of instructions 7.3, 14.2, 18, 19, 21, 22, 23, 24 and 25 will not be grounds for protest by a boat. This changes RRS 60.1(a).

- 16.5** On the last day of the regatta:
- (a) a request for reopening a hearing shall be delivered within the protest time limit if the party requesting reopening was informed of the decision on the previous day;
 - (b) a request for reopening a hearing held on the last day shall be delivered no later than 30 minutes after the party requesting reopening was informed of the decision on that day;
 - (c) the time limit to request redress based upon an action or omission of the Race Committee or jury shall be 30 minutes after the decision was posted. This changes RRS 62 and 66.

17 SCORING

17.1 One race is required to be completed to constitute a series.

17.2 When fewer than six (6) races have been completed, a boat's series score will be the total of her race scores. When six (6) or more races have been completed, a boat's series scores will be the total of her race scores excluding her worst score. This changes RRS A2.

18 SAFETY REGULATIONS

A boat that retires from a race shall notify the Race Committee and/or the jury as soon as possible.

19 REPLACEMENT OF EQUIPMENT

19.1 In the case of damage, boats and/or equipment may only be substituted with the written permission of the jury. When the damage occurs later than 90 minutes before the first scheduled start of the day and before the start of the last race of the day, provisional verbal permission shall be obtained from the jury or Race Committee. Written permission by the jury shall be obtained before the end of the Protest Time limit on the day in which the substitution takes place.

20 COACH AND SUPPORT BOATS

20.1 Coach and other support persons must register with the Organizing Authority prior to the first day of racing. Coach or support boats shall be marked with identifying flags issued by the Organizing Authority and shall display identifying flags at all times while they are on the water.

20.2 All registered coach and support boats will carry on board and operate while on the water a VHF radio capable of transmitting and receiving on VHF Channels 16, 71 and 72 and agree to assist the Race Committee if directed to do so.

20.3 Competitors shall have no communication with, and boats shall not be tied to, coach or support boats from the first warning signal (or any other time the Organizing Authority considers appropriate) of the day until racing has been concluded for the day. Between races, coach and support boats shall not approach, communicate with or transfer provisions or equipment to or from their supported boats unless in a medical or emergency requirement threatening the health of the crew or the flotation of the boat and only with the expressed permission of the jury or the Race Committee.

20.4 Registered coach and support boats and their personnel shall stay at least 100 metres below the starting line from the time of the preparatory signal until five minutes after the start of any race. After this time, coach and support boats may then proceed parallel to the course on the starboard side of the course facing the wind at a distance of at least 100 metres outside areas where boats are racing. Coach and support boats shall not go above the weather marks or the Course 1 finishing line or below the leeward marks or the Course 2 finishing line at any other time while boats are racing.

20.5 Any breach of SI 20.1, 20.2, 20.3 or 20.4 by a support person boat may result in the protest committee convening a hearing under rules 60.3(d) and 63.9. The protest committee may take action against a support person acting under rule 64.4(a), and acting under rule 64.4(b) may penalize any or all boats serviced by that support person.

20.7 Coach and support boats shall, when requested by the Race Committee, tow or assist boats not associated with them. Coach and support boats will monitor their circle VHF channel and shall follow all instructions from the Race Committee.

21 PLASTIC POOLS

Plastic pools or their equivalent shall not be used around competing yachts between the close of registration and the end of the regatta.

22 RADIO COMMUNICATION

- 22.1** This supplements but does not change RRS 2 and 41 for the IECA. All boats shall carry a marine band VHF receiver capable of receiving normal international channels. Boats shall use the radio to report retirement from racing and may use the radio to request assistance in an emergency. These specific uses, as well as listening to Race Committee communications on VHF Channel 71 or 72, will not break the restriction on not using a VHF Radio in Class Rule C.5.2(b)(8). No other transmissions are permitted by competing yachts during each racing day from the first warning signal until the end of the last race of the day.
- 22.2** The Race Committee may use the radio to advise competitors of race information.
- 22.3** The use of mobile/cell phones or any device capable of sending and/or receiving external electronic communication and/or connecting to the internet is prohibited after the first warning signal (or any other time considered appropriate by the Organizing Authority) on each race day until the boat has completed its day's racing, except in an emergency threatening the safety of any sailor or the flotation of a boat. A report shall be submitted to the jury of any such use.

23 PRIZES

- 23.1** Overall series trophies will be awarded to the top three finishers in each class.
- 23.2** Other trophies will be awarded at the discretion of the Organizing Authority.

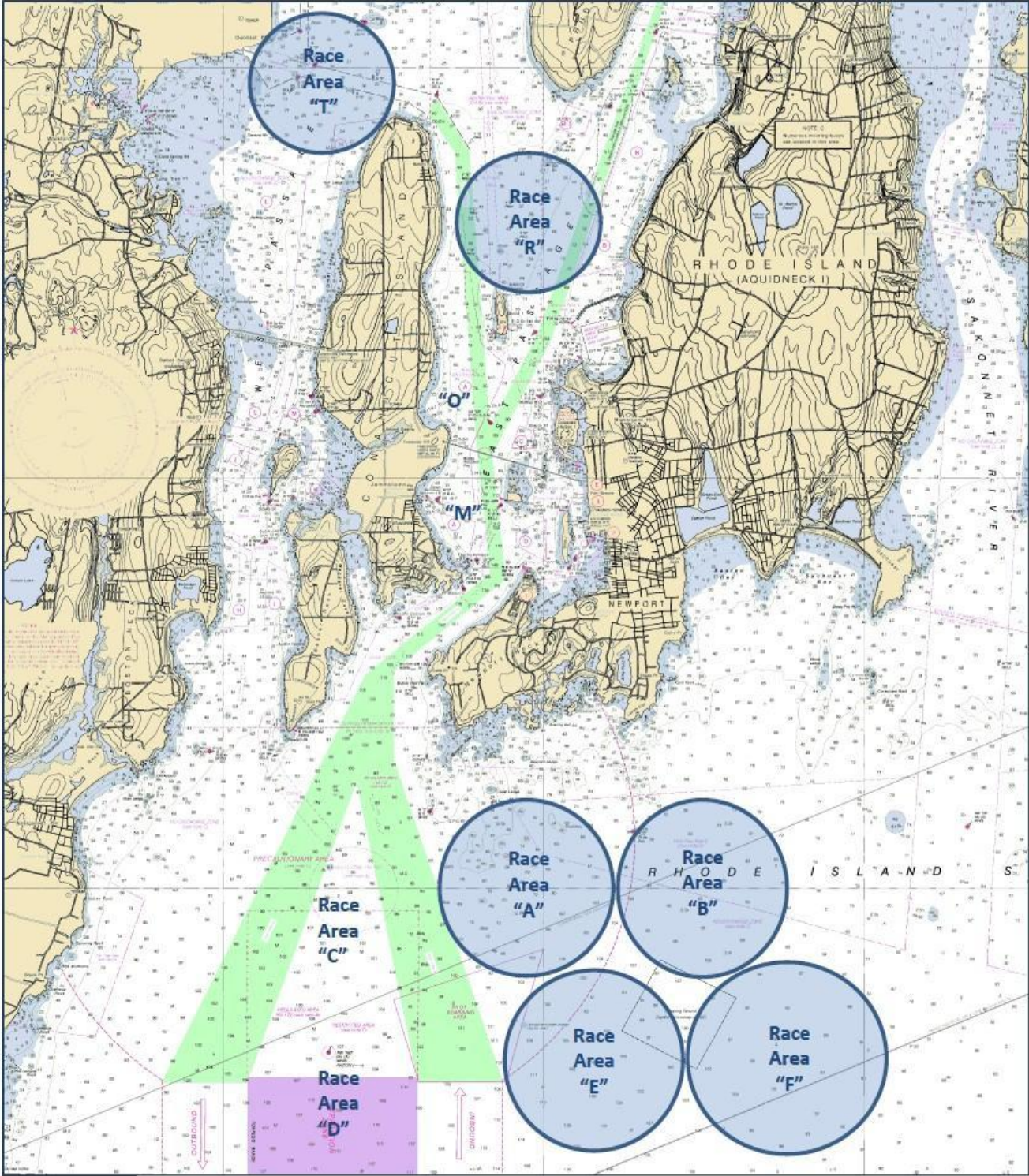
24 DISCLAIMER OF LIABILITY

Competitors participate in the regatta entirely at their own risk. It is the competitor's decision to enter the Championship or to start or continue in any race. Competitors' attention is drawn to RRS Fundamental Rule 4, Decision to Race. The Organizing Authority will not accept any liability for material damage or personal injury or death sustained in conjunction with or prior to, during, or after the regatta.



25 INSURANCE

All Yachts competing are required to carry current Third Party Property Liability Insurance as outlined in NOR 15.

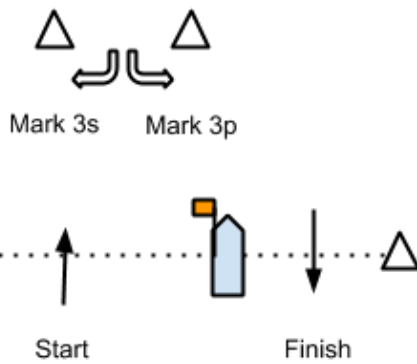
SI ATTACHMENT A – PRIMARY RACE AREAS



SI ATTACHMENT B – COURSE DIAGRAMS

	Course 4	Start - 1p - 2p - 3s/3p - 1p - 2p - Finish (downwind)
	Course 5	Start - 1p - 2p - 3s/3p - 1p - 2p - 3s/3p - Finish (upwind)

COURSE #4 - 4 Legs



COURSE #5 - 5 legs

