



26th Annual Annapolis Leukemia Cup

ORGANIZING AUTHORITY
Eastport Yacht Club

Assist by
Annapolis Yacht Club



Saturday, 02 June 2018

GENERAL SAILING INSTRUCTIONS ANNAPOLIS FLEETS

1 RULES

- 1.1 Racing will be governed by the *rules* as defined in the current *Racing Rules of Sailing* (RRS).
- 1.2 Neither spinnakers nor double headsails are permitted in the Leukemia Cruising Class. Entrants with racing experience are not permitted in the Leukemia Class; they shall participate in other classes.
- 1.3 PHRF N competitors only may use double headsails.
- 1.4 The notation "[DP]" in a rule in these Sailing Instructions means that the penalty for a breach of that rule may, at the discretion of the Protest Committee, be less than disqualification.
- 1.5 The notation "[NP]" in a rule in these Sailing Instructions means that a boat may not protest another boat for breaking that rule. This changes RRS 60.1(a).

2 ENTRIES

The regatta is open to all competitors who register with the Organizing Authority and pay the entry fee prior to 2000 hours on Thursday, 31 May 2018.

3 NOTICES TO COMPETITORS

Notices to competitors will be posted on the Official Notice Board located on the waterside at Eastport Yacht Club (EYC).

4 CHANGES TO THE SAILING INSTRUCTIONS

Any change to the SIs will be posted before 0900 hours on the day of the race, except that any change to the schedule of races will be posted by 2000 hours the day before it will take effect.

5 SIGNALS MADE ASHORE

- 5.1 Signals made ashore will be displayed from the EYC flagpole.
- 5.2 When flag AP is displayed ashore, "1 minute" is replaced with "not less than 60 minutes." This changes RRS Race Signals.

6 SCHEDULE OF RACES

- 6.1 For **Division A**, refer to Attachment A.
- 6.2 For **Division B**, refer to Attachment B.
- 6.3 For **Division C**, refer to Attachment C.

7 RACING AREAS

The racing areas will be on the Severn River and the Chesapeake Bay, off Annapolis. Refer to Figure 1.





LEUKEMIA CUP – ANNAPOLIS FLEETS



8 FLEET ASSIGNMENTS

Fleet assignments, RC assignment, and course information is as follows. Refer to Figure 1.

	Division A	Division B	Division C
RC:	EYC	AYC	EYC
Rendezvous:	1AH (FI G, 4.0s)	Horn Point (FI W, 6.0s)	R2 (FI R, 2.5s)
VHF:	73	72	68
	CLASSES	CLASSES	CLASSES
	PHRF Spinnaker	Cal 25	Leukemia
	J/35	Harbor 20	CRCA
	J/105	Herreshoff 12.5	PHRF N
	J/80	Alerion Express 28	Multihull
	J/30		

9 CHECK IN

- 9.1 For **Division A**, refer to Attachment A.
- 9.2 For **Division B**, refer to Attachment B.
- 9.3 For **Division C**, refer to Attachment C.

10 MARKS

- 10.1 For **Division A**, refer to Attachment A.
- 10.2 For **Division B**, refer to Attachment B.
- 10.3 For **Division C**, refer to Attachment C.

11 THE START

- 11.1 For **Division A**, refer to Attachment A.
- 11.2 For **Division B**, refer to Attachment B.
- 11.3 For **Division C**, refer to Attachment C.

12 RECALLS

- 12.1 For **Division A**, refer to Attachment A.
- 12.2 For **Division B**, refer to Attachment B.
- 12.3 For **Division C**, refer to Attachment C.

13 THE FINISH

- 13.1 For **Division A**, refer to Attachment A.
- 13.2 For **Division B**, refer to Attachment B.
- 13.3 For **Division C**, refer to Attachment C.

14 PENALTY SYSTEM

- 14.1 For **Division A**, refer to Attachment A.
- 14.2 For **Division B**, refer to Attachment B.
- 14.3 For **Division C**, refer to Attachment C.

15 TIME LIMIT

- 15.1 For **Division A**, refer to Attachment A.
- 15.2 For **Division B**, refer to Attachment B.
- 15.3 For **Division C**, refer to Attachment C.

16 REPORT OF THE RACE COMMITTEE

The Report of the Race Committee regarding incidents on the water shall be posted on the Official Notice Board no later than fifteen (15) minutes after the Signal Vessel docks. The report shall include scoring-related actions (DNC, DNS, OCS, ZFP, UFD, BFD, DNF, DNE) and the Signal Vessel dock time.

17 SCORING INQUIRIES, PROTESTS, AND REQUESTS FOR REDRESS

- 17.1 **[DP]** A boat intending to protest an incident in the racing area shall inform the RC when she finishes, or via her Fleet's VHF channel when leaving the race course without finishing, or via email at race.committee@eastportyc.org. This changes RRS 61.1(a).





LEUKEMIA CUP – ANNAPOLIS FLEETS



- 17.2 A boat requesting clarification about the Report of the Race Committee must submit a Scoring Inquiry Form within the protest time limit and go through the scoring inquiry process prior to filing a request for redress. A boat requesting clarification about her score(s), based on posted results must submit a Scoring Inquiry Form as soon as reasonably possible after learning of the posting and go through the scoring inquiry process prior to filing a request for redress. If after going through the scoring inquiry process, the competitor wishes to file for redress, the request must be delivered as soon as reasonably possible after learning of the outcome of the scoring inquiry hearing.
- 17.3 Scoring Inquiries and Protest Forms are available at, and shall be filed with the RC Office (first floor, on the waterside of the building). For each class, the protest time limit is sixty (60) minutes after the RC Signal Vessel dock time. This posting constitutes the notification required in RRS 61.1b and 63.2. The time limit for a request for redress based on an incident in the racing area shall be the protest time limit. This changes RRS 62.2.
- 17.4 Notices of hearing shall be posted no later than fifteen (15) minutes after the protest time limit to inform competitors of hearings in which they are parties or named as witnesses. Hearings will be held at EYC beginning approximately thirty (30) minutes after the protest time limit. The Protest Committee will attempt to hear protests in the order of receipt by the Protest Secretary. Representatives of boats who are parties to a hearing shall remain on call in the vicinity of the protest room.
- 17.5 When the RC or Protest Committee protests a boat, the requirements of RRS 61.1(b) to notify the boat may be met by posting a list of protested boats on the Official Notice Board and the Protest Board before the end of the protest time limit.

18 SAFETY

- 18.1 **[DP] [NP]** A boat that retires from a race shall notify the RC as soon as possible either by hail or on their appropriate division VHF channel, or via the EYC cell phone, (410) 972-1569.
- 18.2 **[DP] [NP]** A boat shall not exercise right of way, cross in proximity to, or interfere with reasonable transit of the race area by commercial ships, tugs, or barges. Boats must take evasive action well in advance of a potentially dangerous situation. The US Coast Guard, ship captains, and bay pilots have been encouraged to report any incident they observe.
- 18.3 **[NP]** The RC or Protest Committee may protest a boat for SI 18.2 based on information received from any source. The protest time limit does not apply. This changes RRS 60.2, 60.3, and RRS 61.3.
- 18.4 **[NP]** A boat without way may use any means of propulsion to avoid underway commercial traffic, provided:
- the boat does not gain an advantage;
 - using the propulsion is the boat's only means of avoiding the commercial traffic; and,
 - the boat submits a report (in writing or by email) to the RC by the protest filing deadline that describes the incident and the boat's actions.

19 SCORING

- 19.1 For **Division A**, refer to Attachment A.
- 19.2 For **Division B**, refer to Attachment B.
- 19.3 For **Division C**, refer to Attachment C.

20 RADIO COMMUNICATIONS

- 20.1 For **Division A**, refer to Attachment A.
- 20.2 For **Division B**, refer to Attachment B.
- 20.3 For **Division C**, refer to Attachment C.

21 DISPOSAL OF TRASH

[DP] [NP] This is a Clean Race; all competitors are strongly encouraged to use multi-use water bottles instead of disposable water bottles, and to recycle whenever possible. A competitor shall not intentionally put trash in the water.



22 DISCLAIMER OF LIABILITY

Competitors participate in Leukemia Cup entirely at their own risk; see RRS 4. The Organizing Authority will accept no liability for material damage, personal injury, or death sustained in conjunction with or prior to, during, or after the event.





LEUKEMIA CUP – ANNAPOLIS FLEETS



23 INSURANCE

[DP] [NP] Each participating boat shall be insured with valid third-party liability insurance with a minimum coverage of \$300,000 (US) per incident, or the equivalent.

24 PRIZES

- 24.1 EYC will host the “Rock the Dock” social and prize-giving party following racing. The party is scheduled to begin at 1700 hours.
- 24.2 Prizes in each class will be given as follows:
 - 1st Place for three (3) or more entries;
 - 2nd Place for five (5) or more entries; and,
 - 3rd Place for seven (7) or more entries.
- 24.3 The Leukemia and Lymphoma Society will award additional prizes to the top fundraising boat in each class, as well as the overall top three (3) fundraisers for the event.
- 24.4 Participants who compete in all three (3) Annapolis-based charity regattas – Leukemia Cup, CRAB Cup, and Hospice Cup – will be eligible for the Weems & Plath Triple Crown Trophy, to be awarded at the end of the season. The final standings will be a combination of race and fundraising results across all events.

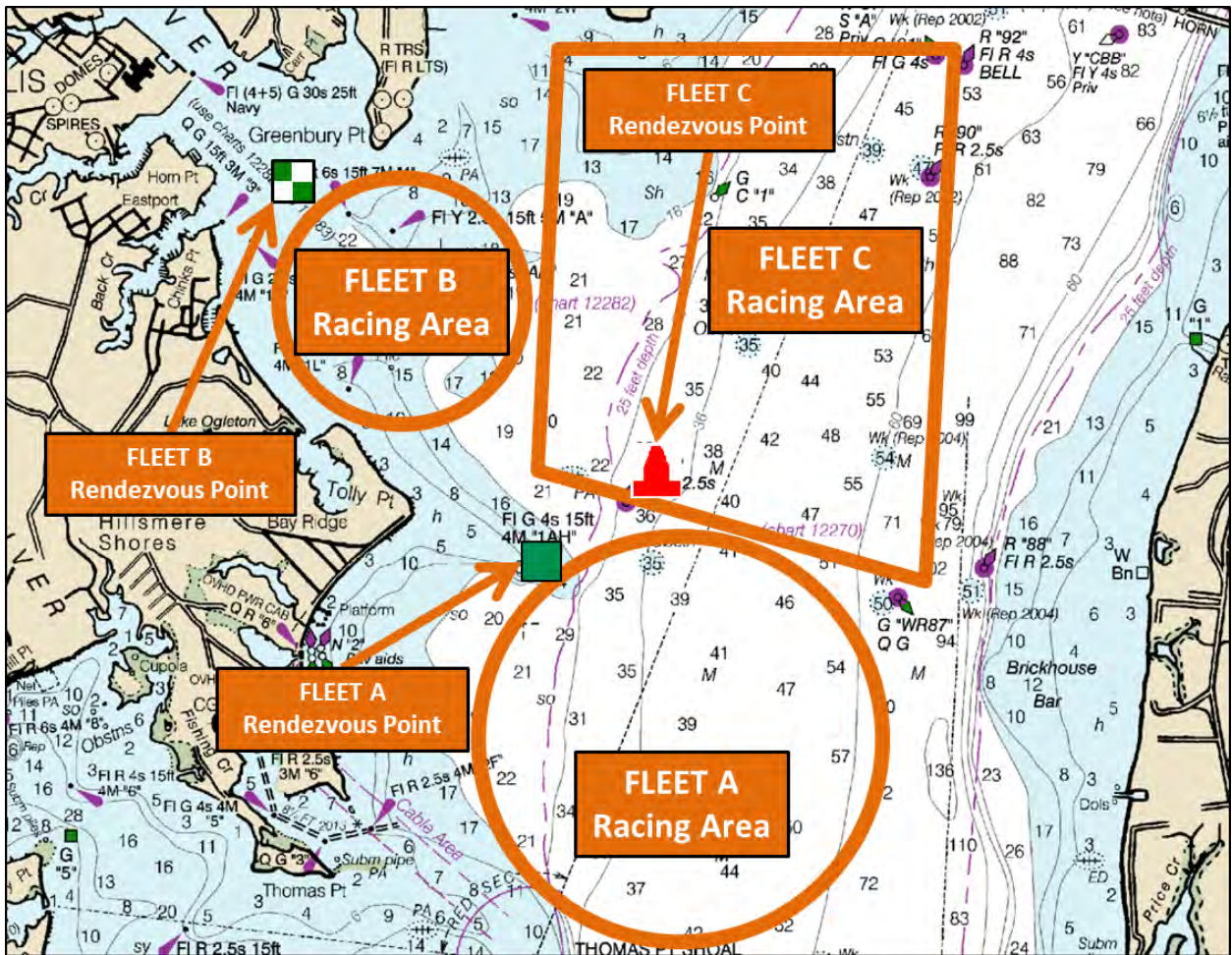


FIGURE 1. Division A, B, & C Rendezvous Points & Racing Areas

Presenting  Sponsor





ATTACHMENT A

for the PHRF SPINNAKER & ONE-DESIGN Classes

A1 SCHEDULE OF RACES

- A1.1 Three (3) races are scheduled for the **PHRF SPINNAKER, J/35, J/105, J/80, and J/30** classes.
- A1.2 Division A competitors shall rendezvous at 1000 hours in the vicinity of 1AH (FI G, 4.0s) (CBYRA “M”).
- A1.3 The Warning Signal for the first race is intended to be made at 1100 hours.
- A1.4 No Warning Signal shall be made after 1530 hours.
- A1.5 **[DP]** The **PHRF SPINNAKER** racers shall display from the backstay their class flag as specified in the CBYRA General SI 4. The **J/35, J/105, J/80, & J/30** racers are encouraged to display from the backstay their class flag as specified in the CBYRA General SI 4.

A2 CHECK IN

[DP] [NP] Prior to starting her first race, each boat shall check in by sailing past the stern of the RC Signal Vessel on starboard tack, hail the sail number, and be acknowledged by the RC.

A3 THE COURSES

- A3.1 The courses will be windward-leeward, as shown in Figure 2 (not to scale). Marks shall be rounded and the finish line crossed in the order presented.
- A3.2 No later than the Warning Signal, the course to be sailed, the approximate heading, and the distance to the first mark will be designated by placards displayed on the stern or side of the RC Signal Vessel that is opposite the starting line.
- A3.3 RC may set a leeward gate. If a leeward gate is placed, boats shall pass between the two marks.
- A3.4 When the first mark of the course is to be a change mark, code flag “C” will be displayed by the starting line signal vessel before the warning signal, accompanied by a series of repetitive sound signals.

A4 MARKS

The marks shall be as described below.

	PHRF SPINNAKER, J/35, J/105, J/80, J/30
	Race Committee: EYC
Start Mark	Lime Green Tetrahedron
Weather Mark	PHRF SPINNAKER, J/35, & J/105: Large Orange Cylinder J/80 & J/30: Large Lime Green Cylinder
Leeward Mark	Large Orange Cylinder
Weather Change Mark	PHRF SPINNAKER, J/35, & J/105: Yellow Tetrahedron J/80 & J/30: Large Lime Green Cylinder w/Black Band
Finish Mark	Lime Green Tetrahedron

A5 THE START

- A5.1 The starting line will be between a staff displaying an orange flag on the RC Signal Vessel at the starboard end, and the course side of the starting mark at the port end.





LEUKEMIA CUP – ANNAPOLIS FLEETS



- A5.2 The class flags and intended start order for the first race shall be as defined immediately below. Subsequent starts may be in a different order so as to maximize racing for all classes.

Fleet A	
Race Committee: EYC	
CLASS	FLAG / PENNANT
PHRF Spinnaker	"1"
J/35	"K"
J/105	"V"
J/80	"J"
J/30	"D"

A6 RECALLS

The RC intends to hail on the VHF channel specified in SI Attachment A11.2, after the starting signal, the sail number(s) of boats that are OCS. The failure of any boat to hear the hail, the timeliness of the hail of OCS boats, failure to hail any boats, and the order of the boats in the hail shall not be grounds for granting redress. This changes RRS 41 and 62.1(a).

A7 THE FINISH

The finish line shall be between the staff or halyard on the RC Signal Vessel displaying a blue flag and the course side of the finishing mark.

A8 PENALTY SYSTEM

- A8.1 RRS Appendix V1, Penalty at the Time of An Incident, will apply.
 A8.2 RRS Appendix V2, Penalty Taken After A Race, will apply, and is changed to: "After a race, a boat that may have broken one or more rules of Part 2 or RRS 31 in an incident while racing may take a Post-Race Penalty for that incident. A boat takes the penalty by delivering a written notice to the race office or sending an email to race.committee@eastportyc.org that identifies the race number and when and where the incident occurred. The penalty shall be calculated as stated in RRS 44.3(c). The written notice must be delivered at least fifteen (15) minutes before the protest time limit.

A9 TIME LIMIT

RRS 35 (Time Limit) is replaced by: "If no boats in her class have finished within two (2) hours, the race shall be abandoned. A boat still racing twenty (20) minutes after the first boat in her class finishes, and not subsequently retiring, being penalized or given redress, will be scored TLE (Time Limit Expired, see Scoring) and should proceed to the starting area if another race is scheduled."

A10 SCORING

- A10.1 RRS Appendix A4, Low Point System, will apply.
 A10.2 Handicap scoring will be in accordance with the PHRF Time-on-Time system.
 A10.3 One (1) scored race is required to constitute a series.
 A10.4 A boat's series score will be the total of her race scores. This changes RRS A2.
 A10.5 Boats to be scored TLE and not thereafter retiring, being penalized or given redress will be scored points equal to the number of boats finishing within the time limit plus two (2) points by the RC without a hearing. This changes RRS A4.2 and A5.

A11 RADIO COMMUNICATIONS

- A11.1 **[DP] [NP]** Competitors shall have a working VHF radio capable of communicating on VHF channels 9, 13, 16, 72, 68, and 73.
 A11.2 Division A RC will communicate with competitors on VHF channel 73.
 A11.3 Boats are encouraged to make contact with commercial traffic on VHF channel 13, as required for safety.
 A11.4 Failure to hear a broadcast, the RC's failure to broadcast, or the content of any broadcast shall not be grounds for redress. This changes RRS 41 and 62.1(a).



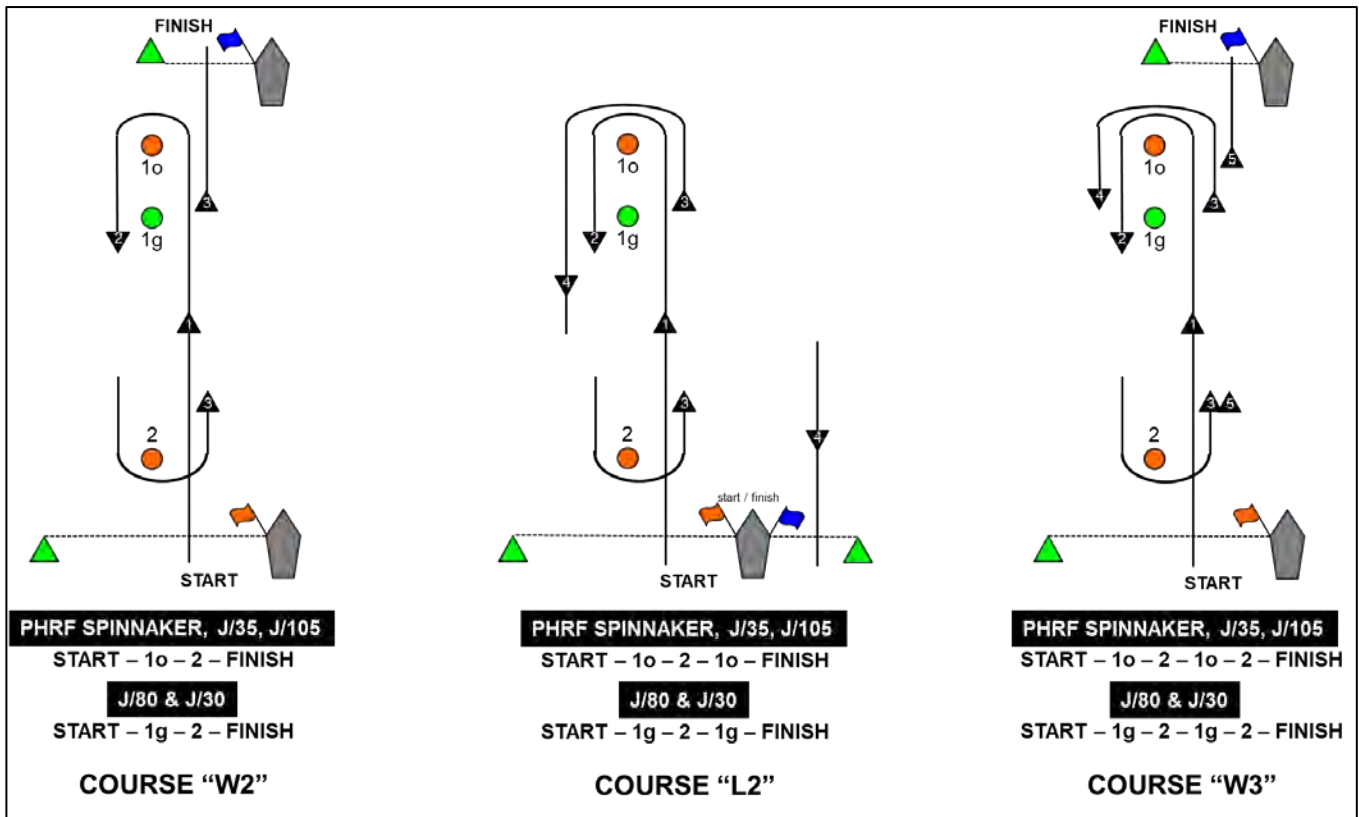


FIGURE 2. PHRF SPINNAKER, J/35, J/105, J/80, & J/30 Course Diagrams and Descriptions



ATTACHMENT B

for the ALERION EXPRESS 28, CAL 25, HARBOR 20, & HERRESHOFF 12.5 Classes

B1 SCHEDULE OF RACES

- B1.1 Three (3) races are scheduled for the **ALERION EXPRESS 28**, **CAL 25**, **HARBOR 20**, and **HERRESHOFF 12.5** classes.
- B1.2 Competitors shall rendezvous at 1000 hours in the vicinity of the green and white Horn Point mark (HP, FI W, 6.0s). The RC will display code flag “L” and proceed to the starting area.
- B1.3 The Warning Signal for the first race is intended to be made at 1100 hours.
- B1.4 No Warning Signal shall be made after 1530 hours.
- B1.5 **[DP]** The **HARBOR 20** and **HERRESHOFF 12.5** racers are not required to display a backstay flag. The **ALERION EXPRESS 28** and **CAL 25** racers are encouraged to display from the backstay their class flag as specified in the CBYRA General SI 4.

B2 CHECK IN

[DP] [NP] Prior to starting, each boat shall check in by sailing past the stern of the RC Signal Vessel on starboard tack, hail the sail number, and be acknowledged by the RC.

B3 THE COURSES

- B3.1 The courses will be windward-leeward, as shown in Figure 3 (not to scale). Marks shall be rounded and the finish line crossed in the order presented.
- B3.2 No later than the Warning Signal, the course to be sailed will be designated on a board displayed on the stern or side of the RC Signal Vessel that is opposite the starting line.
- B3.3 When the first mark of the course is to be a change mark, code flag “C” will be displayed by the starting line signal vessel before the warning signal, accompanied by a series of repetitive sound signals.

B4 MARKS

The marks shall be as described below. Orange cylinders display “AYC” lettering.

	ALERION EXPRESS 28, CAL 25, HARBOR 20, & HERRESHOFF 12.5
	Race Committee: AYC
Start Mark	Large Lime Green Cylinder
Weather Mark	ALERION EXPRESS 28, CAL 25, & HARBOR 20: Large Orange Cylinder HERRESHOFF 12.5: Large Lime Green Cylinder
Leeward Mark	Large Orange Cylinder
Weather Change Mark	ALERION EXPRESS 28, CAL 25, & HARBOR 20: Large Orange Cylinder w/ Black Band HERRESHOFF 12.5: Large Lime Green Cylinder w/Black Band
Finish Mark	Large Lime Green Cylinder





LEUKEMIA CUP – ANNAPOLIS FLEETS



B5 THE START

- B5.1 Starts shall be in accordance with RRS 26.
- B5.2 The class flags and intended start order for the first race shall be as defined immediately below. Subsequent starts may be in a different order so as to maximize racing for all classes.

Fleet B	
Race Committee: AYC	
CLASS	FLAG / PENNANT
Alerion Express 28	"Alerion"
Cal 25	"T"
Harbor 20	White Flag, Harbor 20 Logo
Herreshoff 12.5	"8"

- B5.3 The starting line will be between a staff displaying an orange flag on the RC Signal Vessel at the starboard end, and the course side of the starting mark at the port end.

B6 RECALLS

The RC intends to hail on VHF channel 72 after the starting signal the sail number(s) of boats that are OCS. The failure of any boat to hear the hail, the timeliness of the hail of OCS boats, failure to hail any boats, and the order of the boats in the hail shall not be grounds for granting redress. This changes RRS 41 and 62.1(a).

B7 THE FINISH

The finish line shall be between the staff or halyard on the RC Signal Vessel displaying an orange flag and the course side of the finishing mark.

B8 PENALTY SYSTEM

- B8.1 RRS Appendix V1, Penalty at the Time of An Incident, will apply.
- B8.2 RRS Appendix V2, Penalty Taken After A Race, will apply, and is changed to: "After a race, a boat that may have broken one or more rules of Part 2 or RRS 31 in an incident while racing may take a Post-Race Penalty for that incident. A boat takes the penalty by delivering a written notice to the race office or sending an email to race.committee@eastportyc.org that identifies the race number and when and where the incident occurred. The penalty shall be calculated as stated in RRS 44.3(c). The written notice must be delivered at least fifteen (15) minutes before the protest time limit.

B9 TIME LIMIT

- B9.1 The race shall be abandoned if no boat has rounded the first mark within thirty (30) minutes of the start.
- B9.2 RRS 35 (Time Limit) is replaced by: "If no boats in her class have finished within one and one half (1.5) hours, the race shall be abandoned. Boats still racing twenty (20) minutes after the first boat in her class finishes, and not subsequently retiring, being penalized or given redress, will be scored TLE (Time Limit Expired, see Scoring) and should proceed to the starting area if another race is scheduled.

B10 SCORING

- B10.1 RRS Appendix A4, Low Point System, will apply.
- B10.2 One (1) scored race is required to constitute a series.
- B10.3 A boat's series score will be the total of her race scores. This changes RRS A2.
- B10.4 Boats to be scored TLE and not thereafter retiring, being penalized or given redress will be scored points equal to the number of boats finishing within the time limit plus two (2) points by the RC without a hearing. This changes RRS A4.2 and A5.

B11 RADIO COMMUNICATIONS

- B11.1 **[DP] [NP]** Competitors shall have a working VHF radio capable of communicating on VHF channels 9, 13, 16, 72, 68, and 73.
- B11.2 Division B RC will communicate with competitors on VHF channel 72.
- B11.3 Boats are encouraged to make contact with commercial traffic on VHF channel 13, as required for safety.
- B11.4 Failure to hear a broadcast, the RC's failure to broadcast, or the content of any broadcast shall not be grounds for redress. This changes RRS 41 and 62.1(a).





LEUKEMIA CUP – ANNAPOLIS FLEETS

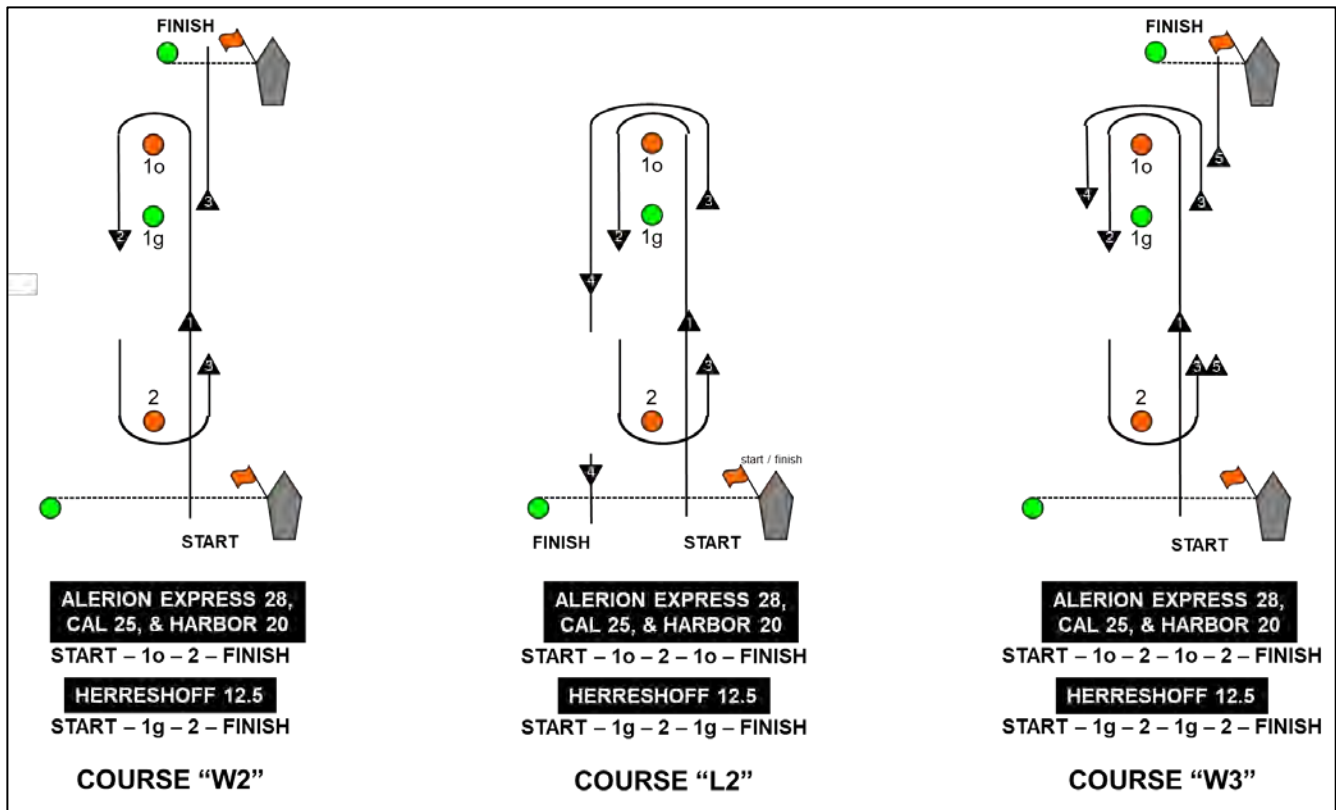


FIGURE 3. ALERION EXPRESS 28, CAL 25, HARBOR 20, & HERRESHOFF 12.5 Course Diagrams and Descriptions





ATTACHMENT C

For the LEUKEMIA CRUISING, CRCA, PHRF N, & MULTIHULL Classes

C1 SCHEDULE OF RACES

- C1.1 One (1) race is scheduled for the **LEUKEMIA**, **CRCA**, **PHRF N**, and **MULTIHULL** classes.
- C1.2 Competitors shall rendezvous at 1000 hours in the vicinity of R2 (FI R, 2.5s).
- C1.3 The Warning Signal for the race is intended to be made at 1100 hours.
- C1.4 No Warning Signal shall be made after 1400 hours.
- C1.5 Racers shall display from the backstay their class flag. The class flags and intended order of start are:
 - PHRF N:** pennant "5"
 - LEUKEMIA:** bright orange streamer (provided in the skippers bag)
 - CRCA:** white flag
 - MULTIHULL:** code flag "W"

C2 CHECK IN

[DP] [NP] Boats in Fleet C should not attempt to check in with the RC Signal Vessel.

C3 THE COURSE

- C3.1 The **LEUKEMIA**, **CRCA**, **PHRF N**, and **MULTIHULL** classes will sail the same course.
- C3.2 The course shall be available at EYC no later than 1730 hours on Friday, 01 June 2018, and will be posted on the EYC website.
- C3.3 **[DP]** A boat shall not cross the finish line until she is completing the last leg of the course. When the finish line is closed it is an obstruction. A boat that breaks this rule shall not correct her error; however, she will be exonerated if she takes a Two-Turns Penalty (see RRS 44.2.). This changes RRS 28.1.

C4 MARKS

C4.1 Marks that may be used are identified immediately below. Refer to Figure 4.

CHART DESIGNATION	LIGHT	APPROXIMATE LOCATION
1	Y "AN"	FI Y, 4.0s
2	GC1	none
3	G91	FI G, 4.0s
4	WR87	Q G
5	R2	FI R, 2.5s
6	Special Inflatable Mark	none

- C4.2 Marks shall be rounded in the order displayed on the RC Signal Vessel, reading from left to right. Marks designated in "**RED**" shall be rounded to port; marks designated in "**GREEN**" shall be rounded to starboard.
- C4.3 The RC may display a letter "V" to signify that an inflatable orange cylinder mark is set as the first windward mark of the course. The mark shall be rounded per SI Attachment C4.2.

C5 THE START

- C5.1 The start line shall be between a staff displaying an orange flag on the RC vessel and GC1 (no light).
- C5.2 **LEUKEMIA, CRCA, & PHRF N Classes**
- C5.2.1 This shall be a pursuit race with a reverse PHRF Time over Distance (ToD) starting order. The boat with the slowest (highest) rating shall start first and the fastest (lowest) rating shall start last.





LEUKEMIA CUP – ANNAPOLIS FLEETS



C5.2.2 The RC shall signal the starting sequence as follows (this changes RRS 26):

TIME	SIGNAL	FLAG / SOUND
1100	Warning signal for all boats	Raise large EYC burgee with 1 sound
1101	Preparatory signal for the first boat to start	Raise code flag "P" with 1 sound
1104		Lower code flag "P" with a long sound
1105	Starting signal for the first boat to start	Lower large EYC burgee and briefly raise number pennant "0" with 1 sound
each subsequent start time	Starting signal for remaining boats	Briefly raise number pennant "0" with 1 sound

C5.2.3 For the purposes of the definition of "racing," each boat is racing at four (4) minutes prior to her scheduled start.

C5.2.4 The start times for all boats shall be based on their PHRF ToD handicap. The race shall use GPS time synchronization. The RC will attempt to broadcast a five (5) second countdown for each starting time on VHF channel 68. Failure of the RC to announce a start time will not be grounds for redress. This changes RRS 41 and 62.1(a).

C5.2.5 The start time for each boat shall be available at EYC no later than 1730 hours on Friday, 01 June 2018, and will be posted on the EYC website.

C5.2.6 After the Warning signal for the first start, boats shall stay clear of the starting area until four (4) minutes before their scheduled starting time.

C5.2.7 Boats that are On Course Side shall receive a scoring penalty of ten (10) minutes plus the amount of time early. This changes RRS 44.3(c).

C5.2.8 In the event a postponement is signaled on the water, the RC shall announce the revised start times on VHF channel 68 before lowering the postponement flag.

C5.3 MULTIHULL Classes

C5.3.1 The RC will attempt to signal the **MULTIHULL** class start sequence as soon as possible after completing the start of all boats in the **LEUKEMIA, CRCA, PHRF N** classes pursuit race. The RC shall signal a wakeup call with multiple sounds, approximately one (1) minute prior to the Warning signal.

C5.3.2 The start shall be in accordance with RRS 26.

C6 RECALLS

C6.1 For the **LEUKEMIA, CRCA, PHRF N** classes only, RRS 29.1 is replaced with: "When at a boat's starting signal any part of her hull, crew or equipment is on the course side of the starting line, the RC shall promptly hail her number on VHF channel 68. **Individual Recall, code flag "X," will not be used and a boat shall not attempt to clear herself or restart.**"

C6.2 For the **MULTIHULL** classes, The RC intends to hail on VHF channel 68 after the starting signal the sail number(s) of boats that are OCS. The failure of any boat to hear the hail, the timeliness of the hail of OCS boats, failure to hail any boats, and the order of the boats in the hail shall not be grounds for granting redress. This changes RRS 41 and 62.1(a).

C7 THE FINISH

C7.1 The RC will finish boats at a mark of the course. Competitors should look for a boat displaying an "RC Flag" at each mark of the course. The finish line will be between the staff displaying a blue flag and the course side of the nearby mark.

C7.2 The RC may shorten the course at any rounding mark in accordance with RRS 32.

C8 PENALTY SYSTEM

C8.1 RRS Appendix V1, Penalty at the Time of An Incident, will apply.

C8.2 RRS Appendix V2, Penalty Taken After A Race, will apply, and is changed to: "After a race, a boat that may have broken one or more rules of Part 2 or RRS 31 in an incident while racing may take a Post-Race Penalty for that incident. A boat takes the penalty by delivering a written notice to the race office or sending an email to race.committee@eastportyc.org that identifies the race number and when and where the incident occurred. The penalty shall be calculated as stated in RRS 44.3(c). The written notice must be delivered at least fifteen (15) minutes before the protest time limit.





LEUKEMIA CUP – ANNAPOLIS FLEETS



C9 TIME LIMIT

The RC shall abandon the race for a class if no boat in that class sails the course and finishes by 1600 hours. Boats not finished by 1600 shall be scored Time Limit Expired (TLE). This changes RRS 35.

C10 SCORING

C10.1 RRS Appendix A4, Low Point System, will apply.

C10.2 For the **LEUKEMIA, CRCA, PHRF N** classes, handicap ratings will be in accordance with the PHRF Circular Random Time over Distance rating, and boats will be scored in the order of finish.

C10.3 For the **MULTIHULL** classes, boats will be scored per the Chesapeake Multihull Association system.

C10.4 Boats to be scored TLE and not thereafter retiring, being penalized or given redress will be scored points equal to the number of boats finishing within the time limit plus two (2) points by the RC without a hearing. This changes RRS A4.2 and A5.

C11 RADIO COMMUNICATIONS

C11.1 **[DP] [NP]** Competitors shall have a working VHF radio capable of communicating on VHF channels 9, 13, 16, 72, 68, and 73.

C11.2 Division C RC will communicate with competitors on VHF channel 68.

C11.3 Boats are encouraged to make contact with commercial traffic on VHF channel 13, as required for safety.

C11.4 Failure to hear a broadcast, the RC's failure to broadcast, or the content of any broadcast shall not be grounds for redress. This changes RRS 41 and 62.1(a).

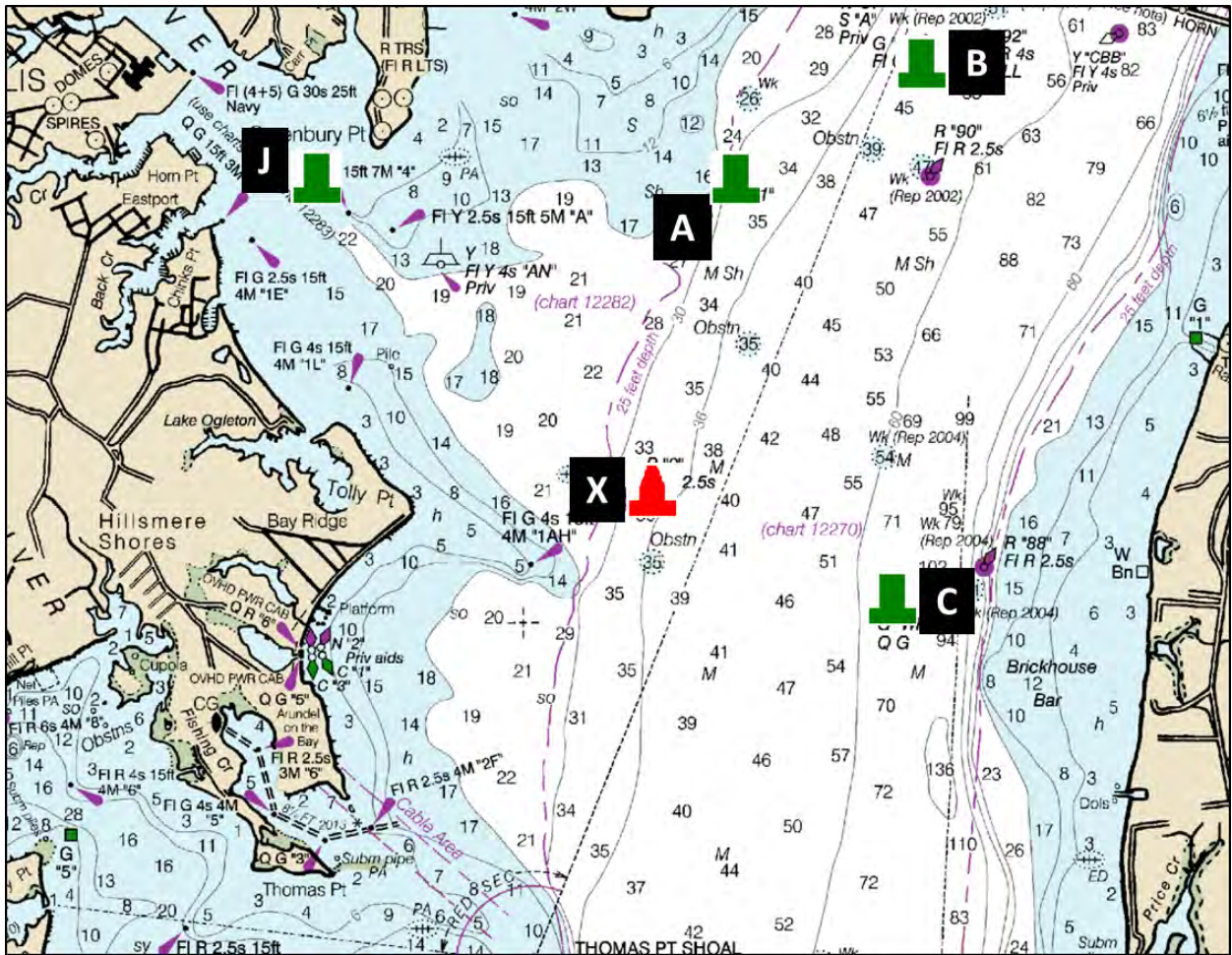


FIGURE 4. Marks for the LEUKEMIA CRUISING, CRCA, PHRF N, & MULTIHULL Classes





26th Annual Annapolis Leukemia Cup

ORGANIZING AUTHORITY
Eastport Yacht Club

Assist by
Herrington Harbour Sailing Association

Saturday, 02 June 2018



SAILING INSTRUCTIONS HERRING BAY FLEET

1 RULES

- 1.1 Racing will be governed by the *rules* as defined in the current *Racing Rules of Sailing* (RRS).
- 1.2 The notation "[DP]" in a rule in these Sailing Instructions means that the penalty for a breach of that rule may, at the discretion of the Protest Committee, be less than disqualification.
- 1.3 The notation "[NP]" in a rule in these Sailing Instructions means that a boat may not protest another boat for breaking that rule. This changes RRS 60.1(a).

2 ENTRIES

The regatta is open to all competitors who register with the Organizing Authority and pay the entry fee prior to 2000 hours on Thursday, 31 May 2018.

3 NOTICES TO COMPETITORS

Notices to Competitors made prior to the start of the race will be posted online on the Eastport Yacht Club (EYC) website located at <http://eastportyc.org/leukemia-cup>. Notices to Competitors made after racing has commenced, will be posted on the Official Notice Board located on the waterside of the EYC building. Notices may also be found on line at: <http://eastportyc.org/leukemia-cup>.

4 CHANGES TO THE SAILING INSTRUCTIONS

Any change to the SIs will be posted before 0900 hours on the day of the race, except that any change to the schedule of races will be posted by 2000 hours the day before it will take effect.

5 SCHEDULE OF RACES

- 5.1 One (1) race is scheduled.
- 5.2 Competitors shall rendezvous at 0930 hours in the vicinity of HHSA Mark A (no light).
- 5.3 The Warning Signal for the race is intended to be made at 1000 hours.
- 5.4 No Warning Signal shall be made after 1200 hours.

6 CLASS FLAGS – ORDER OF START

Racers shall display from the backstay their class flag. The class flags and intended order of start are:
PHRF Non-Spinnaker: pennant "5"

7 RACING AREAS

The racing areas will be on the Chesapeake Bay, between Herring Bay and Annapolis.





8 CHECK IN

[DP] [NP] Prior to starting, all contestants shall check in by sailing past the stern of the Race Committee (RC) Vessel, hail their sail number, and be acknowledged by the RC.

9 THE COURSE

The diagram in Figure 1 shows the course, including the approximate angles between legs, the order in which the marks are to be passed, and the side on which each mark is to be left.

10 MARKS

The marks of the course are identified immediately below. Refer to Figure 1.

CHART DESIGNATION	LIGHT	APPROXIMATE LOCATION
HHSA A	none	N 38° 44.65' / W 076° 31.99'
G 83A	none	N 38° 46.13' / W 076° 26.69'
R 84A	FI R, 2.5s	N 38° 47.63' / W 076° 24.69'
Bloody Point Lighthouse	none	N 38° 50.02' / W 076° 23.49'
R 86	FI R, 4.0s	N 38° 51.98' / W 076° 23.51'
R 2	FI R, 2.5s	N 38° 56.50' / W 076° 25.56'

11 THE START

- 11.1 Races will be started using RRS 26.
- 11.2 The starting line will be between a staff displaying an orange flag on the RC vessel at the starboard end and Herrington Harbour Sailing Association buoy "HHSA A" at the port end.
- 11.3 At the discretion of the RC, and while in the vicinity of "HHSA A," the starting line may be moved from "HHSA A" to "G 83A" by displaying code flag "L" in accordance with RRS Race Signals.

12 RECALLS

The RC intends to hail on VHF channel 68 after the starting signal the sail number(s) of boats that are OCS. The failure of any boat to hear the hail, the timeliness of the hail of OCS boats, failure to hail any boats, and the order of the boats in the hail shall not be grounds for granting redress. This changes RRS 41 and 62.1(a).

13 THE FINISH

- 13.1 The Finish Line shall be between a staff displaying a blue flag on the RC Finish Vessel and the course side of Severn River lighted buoy "R 2 FI R, 2.5s."
- 13.2 If the RC Finish Vessel is not on station, a boat shall take her finish time when she passes Severn River lighted buoy "R 2 FI R, 2.5s" within one hundred (100) yards and the mark bears 085° degrees magnetic. Boats recording their own finish shall report their finish time to the RC as soon as practical after finishing by contacting the Principal Race Officer (PRO) by leaving a message on the EYC cell phone, (410) 972-1569, or via email at race.committee@eastportyc.org.

14 PENALTY SYSTEM

- 14.1 RRS Appendix V1, Penalty at the Time of An Incident, will apply.
- 14.2 RRS Appendix V2, Penalty Taken After A Race, will apply, and is changed to: "After a race, a boat that may have broken one or more rules of Part 2 or RRS 31 in an incident while racing may take a Post-Race Penalty for that incident. A boat takes the penalty by delivering a written notice to the race office or sending an email to race.committee@eastportyc.org that identifies the race number and when and where the incident occurred. The penalty shall be calculated as stated in RRS 44.3(c). The written notice must be delivered at least fifteen (15) minutes before the protest time limit.

15 TIME LIMIT

The RC shall abandon the race for a class if no boat in that class sails the course and finishes by 1600 hours. Boats not finished by 1600 shall be scored Time Limit Expired (TLE). This changes RRS 35.

16 REPORT OF THE RACE COMMITTEE

The Report of the Race Committee regarding incidents on the water shall be posted on the Official Notice Board no later than fifteen (15) minutes after the Signal Vessel docks. The report shall include scoring-related actions (DNC, DNS, OCS, ZFP, UFD, BFD, DNF, DNE) and the Signal Vessel dock time.





LEUKEMIA CUP – HERRING BAY FLEET



17 SCORING INQUIRIES, PROTESTS, AND REQUESTS FOR REDRESS

- 17.1 **[DP]** A boat intending to protest an incident in the racing area shall inform the RC when she finishes, or via her Fleet's VHF channel when leaving the race course without finishing, or via email at race.committee@eastportyc.org. This changes RRS 61.1(a).
- 17.2 A boat requesting clarification about the Report of the Race Committee must submit a Scoring Inquiry Form within the protest time limit and go through the scoring inquiry process prior to filing a request for redress. A boat requesting clarification about her score(s), based on posted results must submit a Scoring Inquiry Form as soon as reasonably possible after learning of the posting and go through the scoring inquiry process prior to filing a request for redress. If after going through the scoring inquiry process, the competitor wishes to file for redress, the request must be delivered as soon as reasonably possible after learning of the outcome of the scoring inquiry hearing.
- 17.3 Scoring Inquiries and Protest Forms are available at, and shall be filed with the RC Office (first floor, on the waterside of the building). For each class, the protest time limit is sixty (60) minutes after the RC Signal Vessel dock time. This posting constitutes the notification required in RRS 61.1b and 63.2. The time limit for a request for redress based on an incident in the racing area shall be the protest time limit. This changes RRS 62.2.
- 17.4 Notices of hearing shall be posted no later than fifteen (15) minutes after the protest time limit to inform competitors of hearings in which they are parties or named as witnesses. Hearings will be held at EYC beginning approximately thirty (30) minutes after the protest time limit. The Protest Committee will attempt to hear protests in the order of receipt by the Protest Secretary. Representatives of boats who are parties to a hearing shall remain on call in the vicinity of the protest room.
- 17.5 When the RC or Protest Committee protests a boat, the requirements of RRS 61.1(b) to notify the boat may be met by posting a list of protested boats on the Official Notice Board and the Protest Board before the end of the protest time limit.

18 SAFETY

- 18.1 **[DP] [NP]** A boat that retires from a race shall notify the RC as soon as possible either by hail or on VHF channel 68, or via the EYC cell phone, (410) 972-1569.
- 18.2 **[DP] [NP]** A boat shall not exercise right of way, cross in proximity to, or interfere with reasonable transit of the race area by commercial ships, tugs, or barges. Boats must take evasive action well in advance of a potentially dangerous situation. The US Coast Guard, ship captains, and bay pilots have been encouraged to report any incident they observe.
- 18.3 **[NP]** The RC or Protest Committee may protest a boat for SI 18.2 based on information received from any source. The protest time limit does not apply. This changes RRS 60.2, 60.3, and RRS 61.3.
- 18.4 **[NP]** A boat without way may use any means of propulsion to avoid underway commercial traffic, provided:
- the boat does not gain an advantage;
 - using the propulsion is the boat's only means of avoiding the commercial traffic; and,
 - the boat submits a report (in writing or by email) to the RC by the protest filing deadline that describes the incident and the boat's actions.

19 SCORING

- 19.1 RRS A4, the Low Point scoring system will apply.
- 19.2 Handicap scoring will be in accordance with the PHRF Time-on-Time Circular Random rating.

20 RADIO COMMUNICATIONS

- 20.1 **[DP] [NP]** Competitors shall have a working VHF radio capable of communicating on VHF channels 9, 13, 16, and 68.
- 20.2 RC will communicate with competitors on VHF channel 68.
- 20.3 Boats are encouraged to make contact with commercial traffic on VHF channel 13, as required for safety.

21 DISPOSAL OF TRASH

[DP] [NP] This is a Clean Race; all competitors are strongly encouraged to use multi-use water bottles instead of disposable water bottles, and to recycle whenever possible. A competitor shall not intentionally put trash in the water.



22 DISCLAIMER OF LIABILITY

Competitors participate in Leukemia Cup entirely at their own risk; see RRS 4. The Organizing Authority will accept no liability for material damage, personal injury, or death sustained in conjunction with or prior to, during, or after the event.





LEUKEMIA CUP – HERRING BAY FLEET



23 INSURANCE

[DP] [NP] Each participating boat shall be insured with valid third-party liability insurance with a minimum coverage of \$300,000 (US) per incident, or the equivalent.

24 PRIZES

- 24.1 EYC will host the “Rock the Dock” social and prize-giving party following racing. The party is scheduled to begin at 1700 hours.
- 24.2 Prizes in each class will be given as follows:
 - 1st Place for three (3) or more entries;
 - 2nd Place for five (5) or more entries; and,
 - 3rd Place for seven (7) or more entries.
- 24.3 The Leukemia and Lymphoma Society will award additional prizes to the top fundraising boat in each class, as well as the overall top three (3) fundraisers for the event.
- 24.4 Participants who compete in all three (3) Annapolis-based charity regattas – Leukemia Cup, CRAB Cup, and Hospice Cup – will be eligible for the Weems & Plath Triple Crown Trophy, to be awarded at the end of the season. The final standings will be a combination of race and fundraising results across all events.

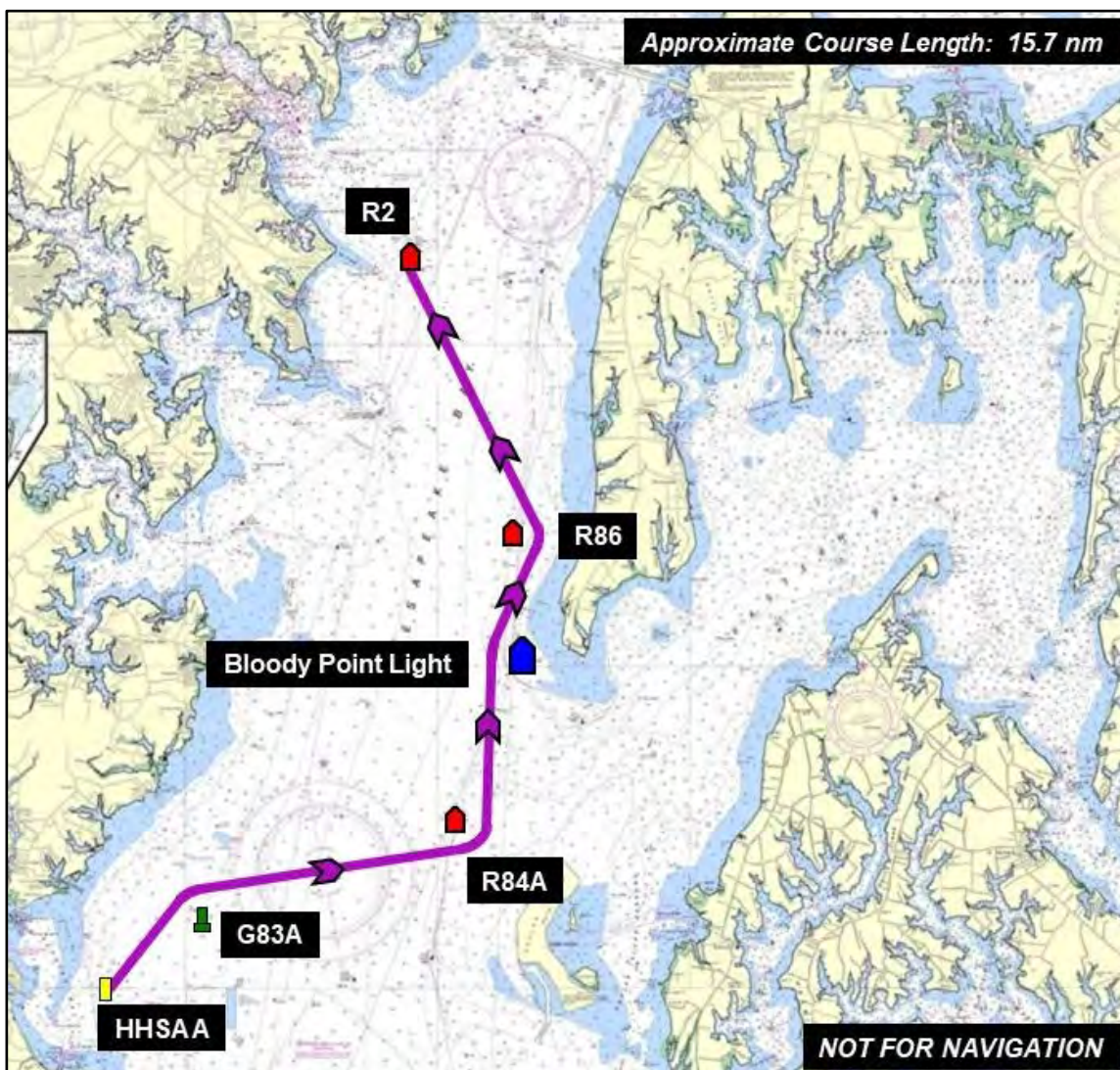
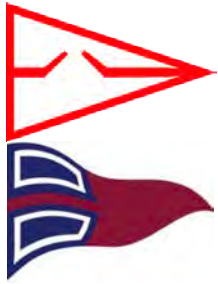


FIGURE 1. Herring Bay Fleet Course Diagram

Presenting  Sponsor





26th Annual Annapolis Leukemia Cup

ORGANIZING AUTHORITY
Eastport Yacht Club

Assist by
Miles River Yacht Club



Saturday, 02 June 2018

SAILING INSTRUCTIONS MILES RIVER FLEET

1 RULES

- 1.1 Racing will be governed by the *rules* as defined in the current *Racing Rules of Sailing* (RRS).
- 1.2 The notation “[DP]” in a rule in these Sailing Instructions means that the penalty for a breach of that rule may, at the discretion of the Protest Committee, be less than disqualification.
- 1.3 The notation “[NP]” in a rule in these Sailing Instructions means that a boat may not protest another boat for breaking that rule. This changes RRS 60.1(a).

2 ENTRIES

The regatta is open to all competitors who register with the Organizing Authority and pay the entry fee prior to 2000 hours on Thursday, 31 May 2018.

3 NOTICES TO COMPETITORS

Notices to Competitors made prior to the start of the race will be posted on the Official Notice Board located at the Commodore’s Room in the Miles River Yacht Club (MRYC) building. Notices to Competitors made after racing has commenced, will be posted on the Official Notice Board located on the waterside of the Eastport Yacht Club (EYC) building. Notices may also be found on line at:
<http://eastportyc.org/leukemia-cup>.

4 CHANGES TO THE SAILING INSTRUCTIONS

Any change to the SIs will be posted before 0900 hours on the day of the race, except that any change to the schedule of races will be posted by 2000 hours the day before it will take effect.

5 SIGNALS MADE ASHORE

- 5.1 Signals made ashore will be displayed from the MRYC flagpole, located on the waterside of the clubhouse.
- 5.2 When flag AP is displayed ashore, “1 minute” is replaced with “not less than 90 minutes.” This changes RRS Race Signals.

6 SCHEDULE OF RACES

- 6.1 One (1) race is scheduled.
- 6.2 Competitors shall rendezvous at 0930 hours in the vicinity of Miles River Buoy R8.
- 6.3 The Warning Signal for the race is intended to be made at 1000 hours.
- 6.4 No Warning Signal shall be made after 1200 hours.

7 CLASS FLAGS – ORDER OF START

Racers shall display from the backstay their class flag. The class flags and intended order of start are:
PHRF Spinnaker: pennant “9”
PHRF Non-Spinnaker: pennant “5”





8 RACING AREAS

The racing areas will be on the Chesapeake Bay, between the Miles River and Annapolis.

9 CHECK IN

[DP] [NP] Prior to starting, all contestants shall check in by sailing past the stern of the Race Committee (RC) Vessel, hail their sail number, and be acknowledged by the RC.

10 THE COURSE

The diagram in Figure 1 shows the course, including the approximate angles between legs, the order in which the marks are to be passed, and the side on which each mark is to be left.

11 MARKS

The marks of the course are identified immediately below. Refer to Figure 1.

CHART DESIGNATION	LIGHT	APPROXIMATE LOCATION
R 8	none	N 38° 50.55' / W 076° 13.84'
R 4	Fl R, 4.0s	N 38° 52.58' / W 076° 15.08'
R 2	none	N 38° 48.78' / W 076° 20.81'
Bloody Point Lighthouse	none	N 38° 50.02' / W 076° 23.49'
R 86	Fl R, 4.0s	N 38° 51.98' / W 076° 23.51'
R 2	Fl R, 2.5s	N 38° 56.50' / W 076° 25.56'

12 THE START

12.1 Races will be started using RRS 26.

12.2 The starting line will be between a staff displaying an orange flag on the RC vessel at the starboard end and Miles River buoy R8 at the port end.

13 RECALLS

The RC intends to hail on VHF channel 68 after the starting signal the sail number(s) of boats that are OCS. The failure of any boat to hear the hail, the timeliness of the hail of OCS boats, failure to hail any boats, and the order of the boats in the hail shall not be grounds for granting redress. This changes RRS 41 and 62.1(a).

14 THE FINISH

14.1 The Finish Line shall be between a staff displaying a blue flag on the RC Finish Vessel and the course side of Severn River lighted buoy "R 2 Fl R, 2.5s."

14.2 If the RC Finish Vessel is not on station, a boat shall take her finish time when she passes Severn River lighted buoy "R 2 Fl R, 2.5s" within one hundred (100) yards and the mark bears 085° degrees magnetic. Boats recording their own finish shall report their finish time to the RC as soon as practical after finishing by contacting the Principal Race Officer (PRO) by leaving a message on the EYC cell phone, (410) 972-1569, or via email at race.committee@eastportyc.org.

15 PENALTY SYSTEM

15.1 RRS Appendix V1, Penalty at the Time of An Incident, will apply.

15.2 RRS Appendix V2, Penalty Taken After A Race, will apply, and is changed to: "After a race, a boat that may have broken one or more rules of Part 2 or RRS 31 in an incident while racing may take a Post-Race Penalty for that incident. A boat takes the penalty by delivering a written notice to the race office or sending an email to race.committee@eastportyc.org that identifies the race number and when and where the incident occurred. The penalty shall be calculated as stated in RRS 44.3(c). The written notice must be delivered at least fifteen (15) minutes before the protest time limit.

16 TIME LIMIT

The RC shall abandon the race for a class if no boat in that class sails the course and finishes by 1600 hours. Boats not finished by 1600 shall be scored Time Limit Expired (TLE). This changes RRS 35.

17 REPORT OF THE RACE COMMITTEE

The Report of the Race Committee regarding incidents on the water shall be posted on the Official Notice Board no later than fifteen (15) minutes after the Signal Vessel docks. The report shall include scoring-related actions (DNC, DNS, OCS, ZFP, UFD, BFD, DNF, DNE) and the Signal Vessel dock time.





LEUKEMIA CUP – MILES RIVER FLEET



18 SCORING INQUIRIES, PROTESTS, AND REQUESTS FOR REDRESS

- 18.1 **[DP]** A boat intending to protest an incident in the racing area shall inform the RC when she finishes, or via her Fleet's VHF channel when leaving the race course without finishing, or via email at race.committee@eastportyc.org. This changes RRS 61.1(a).
- 18.2 A boat requesting clarification about the Report of the Race Committee must submit a Scoring Inquiry Form within the protest time limit and go through the scoring inquiry process prior to filing a request for redress. A boat requesting clarification about her score(s), based on posted results must submit a Scoring Inquiry Form as soon as reasonably possible after learning of the posting and go through the scoring inquiry process prior to filing a request for redress. If after going through the scoring inquiry process, the competitor wishes to file for redress, the request must be delivered as soon as reasonably possible after learning of the outcome of the scoring inquiry hearing.
- 18.3 Scoring Inquiries and Protest Forms are available at, and shall be filed with the RC Office (first floor, on the waterside of the building). For each class, the protest time limit is sixty (60) minutes after the RC Signal Vessel dock time. This posting constitutes the notification required in RRS 61.1b and 63.2. The time limit for a request for redress based on an incident in the racing area shall be the protest time limit. This changes RRS 62.2.
- 18.4 Notices of hearing shall be posted no later than fifteen (15) minutes after the protest time limit to inform competitors of hearings in which they are parties or named as witnesses. Hearings will be held at EYC beginning approximately thirty (30) minutes after the protest time limit. The Protest Committee will attempt to hear protests in the order of receipt by the Protest Secretary. Representatives of boats who are parties to a hearing shall remain on call in the vicinity of the protest room.
- 18.5 When the RC or Protest Committee protests a boat, the requirements of RRS 61.1(b) to notify the boat may be met by posting a list of protested boats on the Official Notice Board and the Protest Board before the end of the protest time limit.

19 SAFETY

- 19.1 **[DP] [NP]** A boat that retires from a race shall notify the RC as soon as possible either by hail or on VHF channel 68, or via the EYC cell phone, (410) 972-1569.
- 19.2 **[DP] [NP]** A boat shall not exercise right of way, cross in proximity to, or interfere with reasonable transit of the race area by commercial ships, tugs, or barges. Boats must take evasive action well in advance of a potentially dangerous situation. The US Coast Guard, ship captains, and bay pilots have been encouraged to report any incident they observe.
- 19.3 **[NP]** The RC or Protest Committee may protest a boat for SI 19.2 based on information received from any source. The protest time limit does not apply. This changes RRS 60.2, 60.3, and RRS 61.3.
- 19.4 **[NP]** A boat without way may use any means of propulsion to avoid underway commercial traffic, provided:
- the boat does not gain an advantage;
 - using the propulsion is the boat's only means of avoiding the commercial traffic; and,
 - the boat submits a report (in writing or by email) to the RC by the protest filing deadline that describes the incident and the boat's actions.

20 SCORING

- 20.1 RRS A4, the Low Point scoring system will apply.
- 20.2 Handicap scoring will be in accordance with the PHRF Time-on-Time Circular Random rating.

21 RADIO COMMUNICATIONS

- 21.1 **[DP] [NP]** Competitors shall have a working VHF radio capable of communicating on VHF channels 9, 13, 16, and 68.
- 21.2 RC will communicate with competitors on VHF channel 68.
- 21.3 Boats are encouraged to make contact with commercial traffic on VHF channel 13, as required for safety.

22 DISPOSAL OF TRASH

- [DP] [NP]** This is a Clean Race; all competitors are strongly encouraged to use multi-use water bottles instead of disposable water bottles, and to recycle whenever possible. A competitor shall not intentionally put trash in the water.





LEUKEMIA CUP – MILES RIVER FLEET



23 DISCLAIMER OF LIABILITY

Competitors participate in Leukemia Cup entirely at their own risk; see RRS 4. The Organizing Authority will accept no liability for material damage, personal injury, or death sustained in conjunction with or prior to, during, or after the event.

24 INSURANCE

[DP] [NP] Each participating boat shall be insured with valid third-party liability insurance with a minimum coverage of \$300,000 (US) per incident, or the equivalent.

25 PRIZES

25.1 EYC will host the “Rock the Dock” social and prize-giving party following racing. The party is scheduled to begin at 1700 hours.

25.2 Prizes in each class will be given as follows:
1st Place for three (3) or more entries;
2nd Place for five (5) or more entries; and,
3rd Place for seven (7) or more entries.

25.3 The Leukemia and Lymphoma Society will award additional prizes to the top fundraising boat in each class, as well as the overall top three (3) fundraisers for the event.

25.4 Participants who compete in all three (3) Annapolis-based charity regattas – Leukemia Cup, CRAB Cup, and Hospice Cup – will be eligible for the Weems & Plath Triple Crown Trophy, to be awarded at the end of the season. The final standings will be a combination of race and fundraising results across all events.

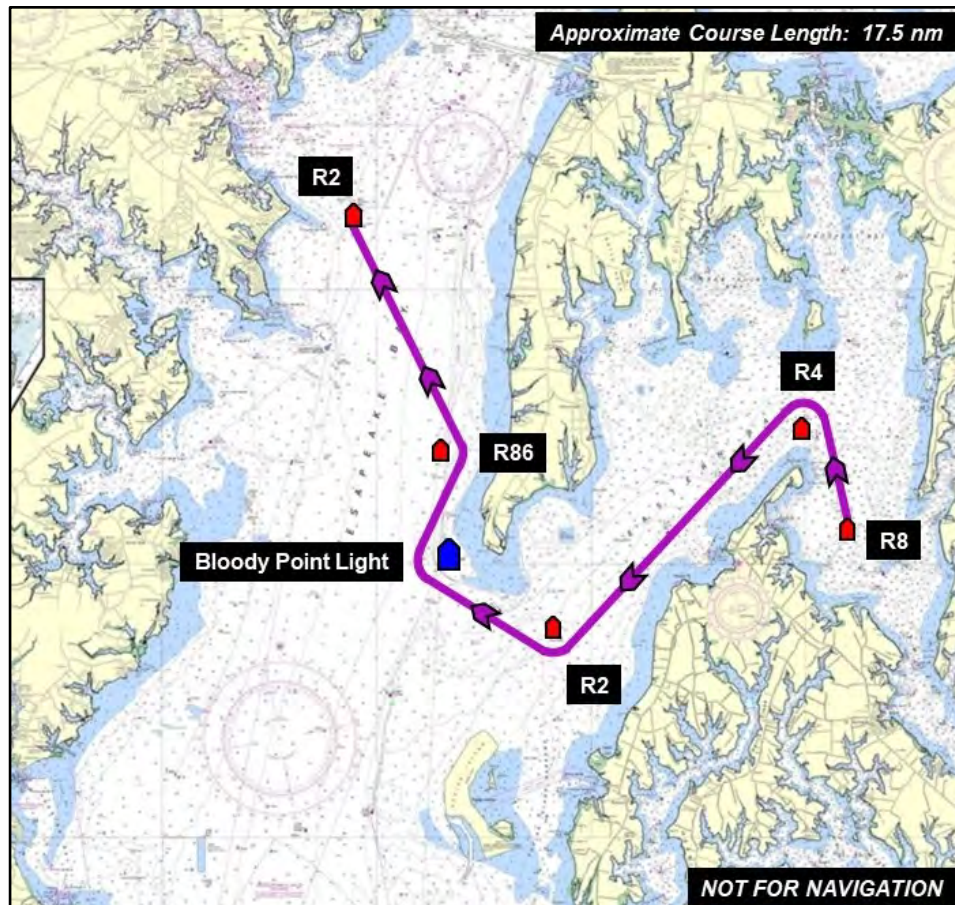


FIGURE 1. Miles River Fleet Course Diagram

Presenting



Sponsor

