



Waukegan Yacht Club

Joseph Conrad Yacht Club



CHICAGO CORINTHIAN YACHT CLUB

SAILING INSTRUCTIONS - AMENDMENT #1 —Waukegan > Chicago --



1. PROTESTS ARE TO BE FILED ON-LINE @ www.YachtScoring.com

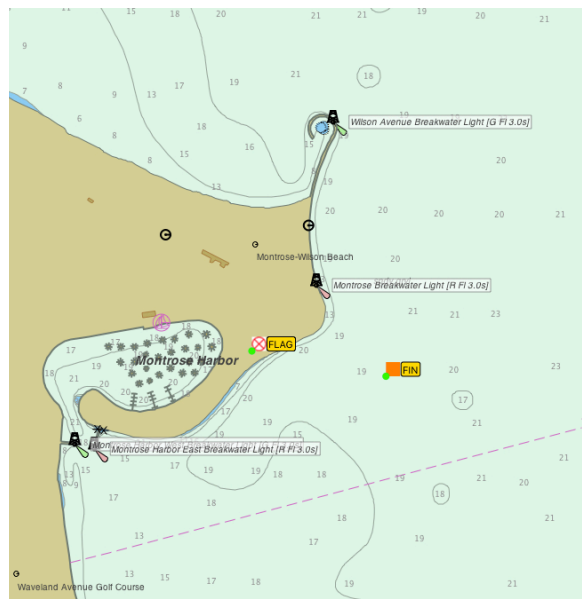
2. COURSE

2.1.START AREA - Appx. N 42.21.385 W 87.48.225

2.1.1. Appx. 120° T, 0.5 NM from Waukegan South Pierhead

2.2. FINISH AREA - NEW LOCATION

2.2.1. The finish line will be between an orange flag flown on shore located on the southern side of Montrose point at an approximate position of N 41.57.721 W 087.38.049 and an orange tetrahedron located at approximately N 41.57.676 W 087.37.736 (about 300 yards offshore). Boats are to pass through this line in the same approximate course as taken from the first previous mark to the finish. **Sail number boards must be displayed on the shore side of the boat at the finish.** The material used in the construction of the sail number board is optional.



2.2.2.No yacht finish report shall be required. Boats are to contact the race committee on channel 78 approximately one half mile before they finish. Upon finishing boats are required to contact the race committee and report their finish time according to GPS time and shall receive confirmation from the Race Committee that they have finished.



Waukegan Yacht Club

Joseph Conrad Yacht Club

CHICAGO CORINTHIAN YACHT CLUB



SAILING INSTRUCTIONS - AMENDMENT #1 --Waukegan > Chicago --



3. HANDICAP SCORING DISTANCE

3.1. 25.0 Nautical Miles.

4. CLASS BREAKS

‡ Section breaks will be set and POSTED ON-LINE by 1030 hours on Friday prior to race(s).
Class starts may be combined by the RC.

4.1. STARTING SEQUENCE AND SIGNAL

SUN, 06/17 WAUKEGAN > CHICAGO DISTANCE RACE				
CLASS	CLASS FLAG	PHRF	WARNING	START
T-10	0 (zero)		0900	0905
J-105	J		0905	0910
BENETEAU 36.7	6		0910	0915
BENETEAU 40.7	7		0915	0920
LMPHRF: 5	5	132 > + INFINITY	0920	0925
LMPHRF: 4	4	90 > 131	0925	0930
LMPHRF: 3	3	63 > 89	0930	0935
LMPHRF: 2	2	12 > 62	0935	0940
LMPHRF: 1	1	- INFINITY > 11	0940	0945
MORF	Q		0945	0950

4.2. A Multi-Hull section will be included and scored as it's own entity. The Multi-Hull boats will race one another only and not be included in overall fleet scoring with the mono hull boats. The Multi-Hull section will start with the LMPHRF 1 section.

5. TIME LIMIT



Waukegan Yacht Club

Joseph Conrad Yacht Club



CHICAGO CORINTHIAN YACHT CLUB

SAILING INSTRUCTIONS - AMENDMENT #1 —Waukegan > Chicago --



5.1. Shall be 1800 hours, June 17, 2018, plus the amount of time of any postponement for a yacht's class. Only yachts crossing the finish line by their class's time limit will be considered as finishing. Non finishers **MUST** notify the CCYC RC via Channel 78 or by telephone to 773-294-5600.

6. PRIZES

6.1. Brag flags shall be awarded to the first three overall finishers based on their handicapped finish positions.