

# SAILING INSTRUCTIONS

## Cape to Cape Challenge Cup X

Friday August 3<sup>rd</sup> & Saturday August 4<sup>th</sup> 2018 Version 1.2  
Lewes Yacht Club Lewes, Delaware & CYCCM Cape May, New Jersey

### 1. Rules

This regatta will be governed by the current Racing Rules of Sailing (RRS), the prescriptions of the United States Sailing Association, the Notice of Race (except as any of these are altered by these Sailing Instructions) and by these Sailing Instructions.

1.1 Any questions in regard to these sailing instructions must be submitted in writing to the Race Committee Chairman at treasurer@lewesyc.com. A response will be posted on the Official Regatta Notice Board and C2C/Yacht Scoring website.

1.2 If there is a conflict between the NOR and these SI the SI will prevail.

### 2. Entries

Eligible yachts may be entered by completing registration with the organizing authority and paying all fees.

### 3. Notice to Competitors

Notices to competitors will be posted on the official notice board located on the first floor of the Lewes Yacht Club (LYC) and C2C/Yacht Scoring website.

### 4. Changes in Sailing Instructions

Any change in the sailing instructions for Friday races will be posted before 1100 hours on Friday. Changes to the Sailing instructions for Saturday race will be posted by 0900 on Saturday.

### 5. Signals Made Ashore

5.1 Signals made ashore will be displayed on the Club signaling mast located on the bay side of the upper deck of the LYC clubhouse.

5.2 When flag AP is displayed ashore, '1 minute' is replaced with 'not less than 30 minutes' in the race signal AP.

### 6. Schedule of Races

6.1 Skipper's meeting for Friday races at Lewes City Dock Friday at 1030.

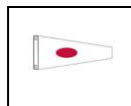
6.2 Friday first signal 1230 hours. Second Race to follow. No starts after 1600.

6.3 Skipper's meeting for Saturday races at LYC clubhouse Friday at 1730.

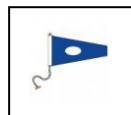
6.4 Saturday first signal at 1030 for non-spinnaker class. All other classes first signal will be at 1130. No starts after 1430. Saturday's course will be posted by 0900 hours Saturday.

### 7. Class Flags

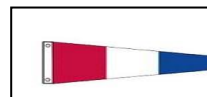
7.1 Signal flag "1" will be used for Spinnaker Class. Red dot on white



7.2 Signal Flag "2" will be used for J70 Class White dot on blue.



7.3 Signal Flag "3" will be used for Non-Spinnaker Class Red white blue.

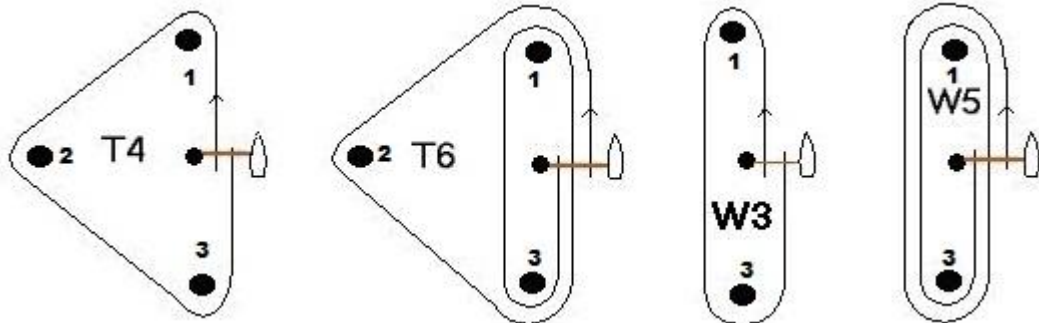


## 8. The course Friday

8.1 The courses for the J70 and Spinnaker classes will be a W3 or W5. The course for the Non-Spinnaker class will be a T4 or T6. The course designation will be displayed on a whiteboard on the signal boat as well as announced on VHF 78. Distance between marks 1 and 3 will be approximately 1nm.

8.2 Course Diagrams for Friday races.

**COURSE DIAGRAMS: Be sure that you sail the correct number of legs.**



Sailing Order: S-1-2-3-F

S-1-2-3-1-3-F

S-1-3-F

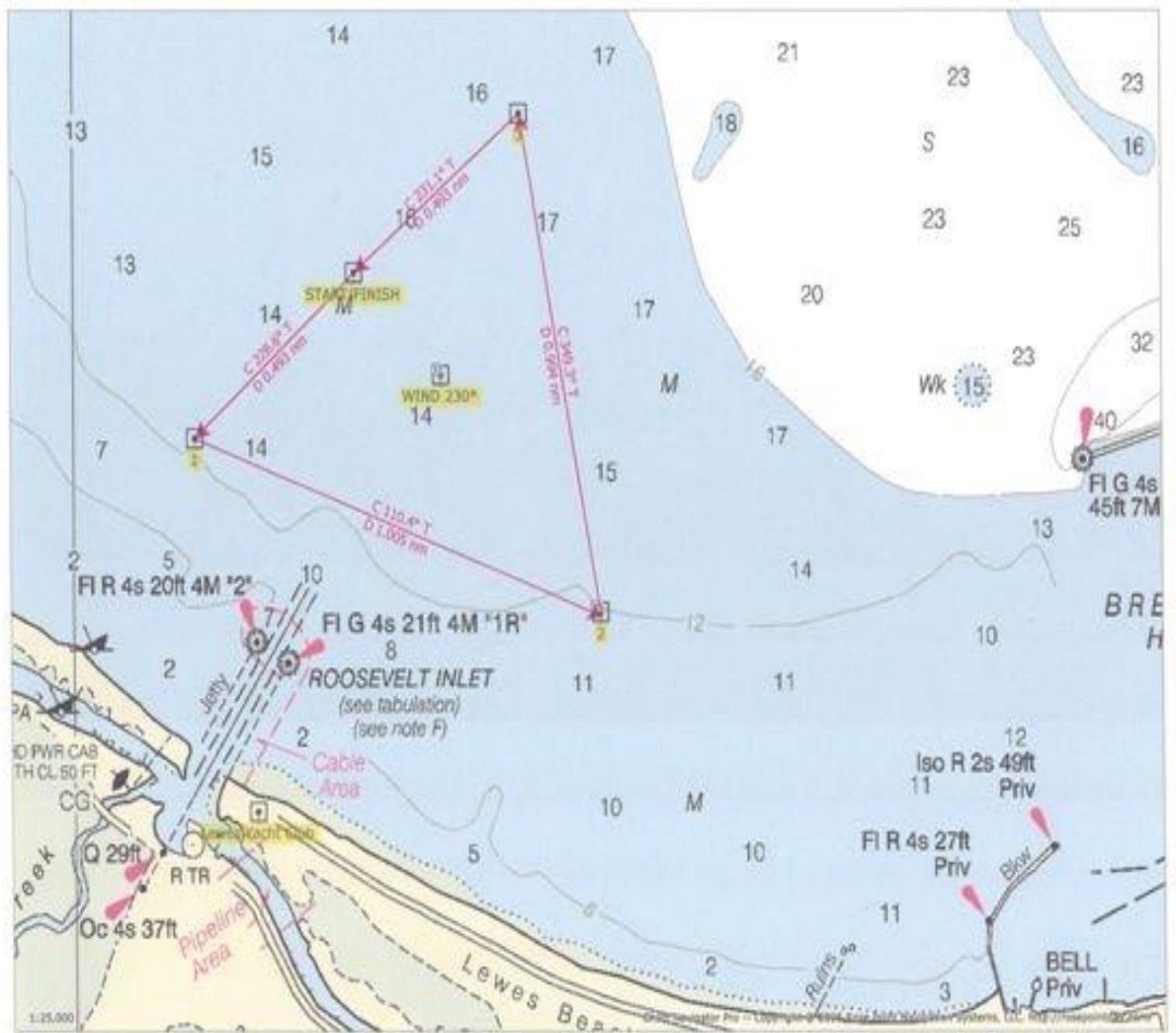
S-1-3-1-3-F

S=Start F=Finish Finish line is closed unless boat is finishing. See item 15.

### Notice to sailors

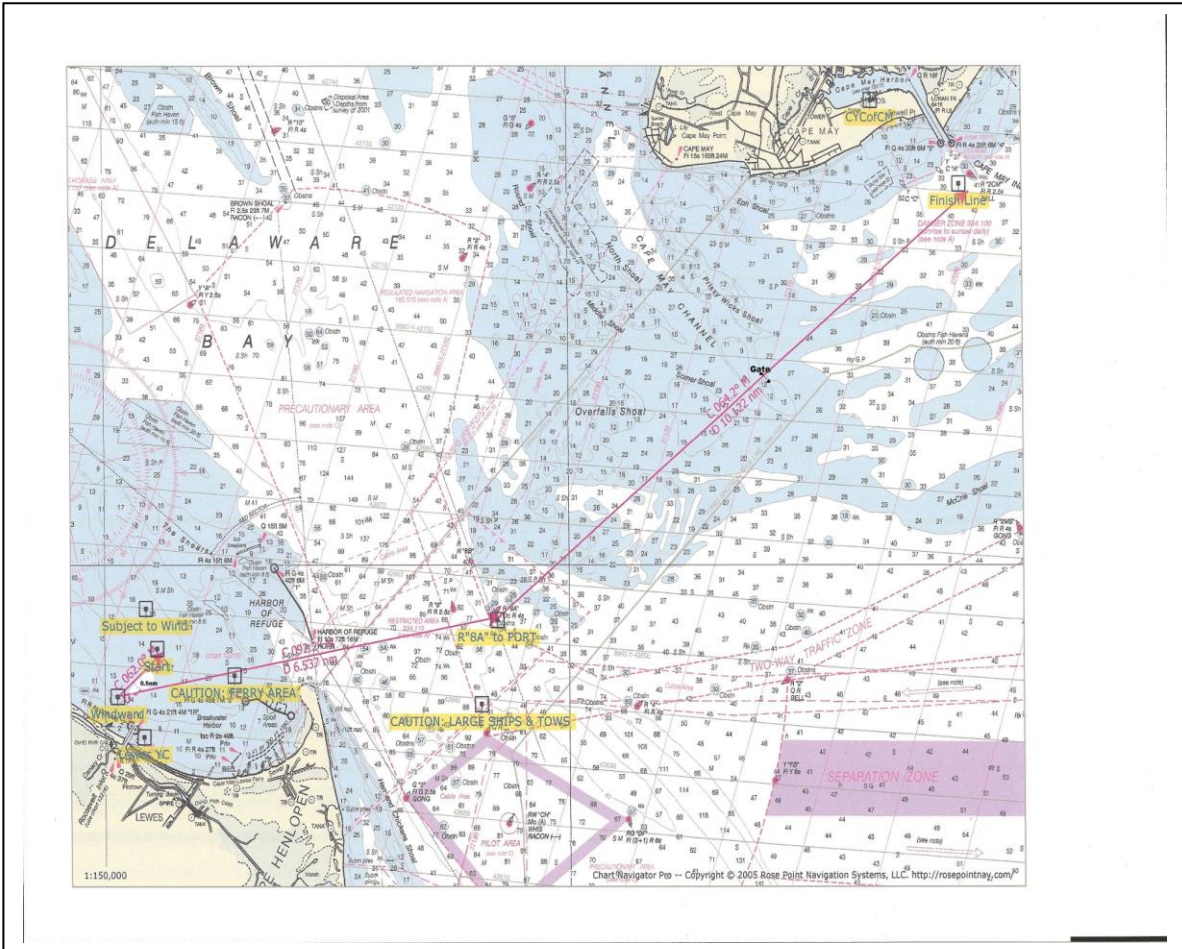
Roosevelt inlet has a shoal building from the north beach that is marked. Use caution when traversing Roosevelt inlet.

Sample course for Friday races showing race area.



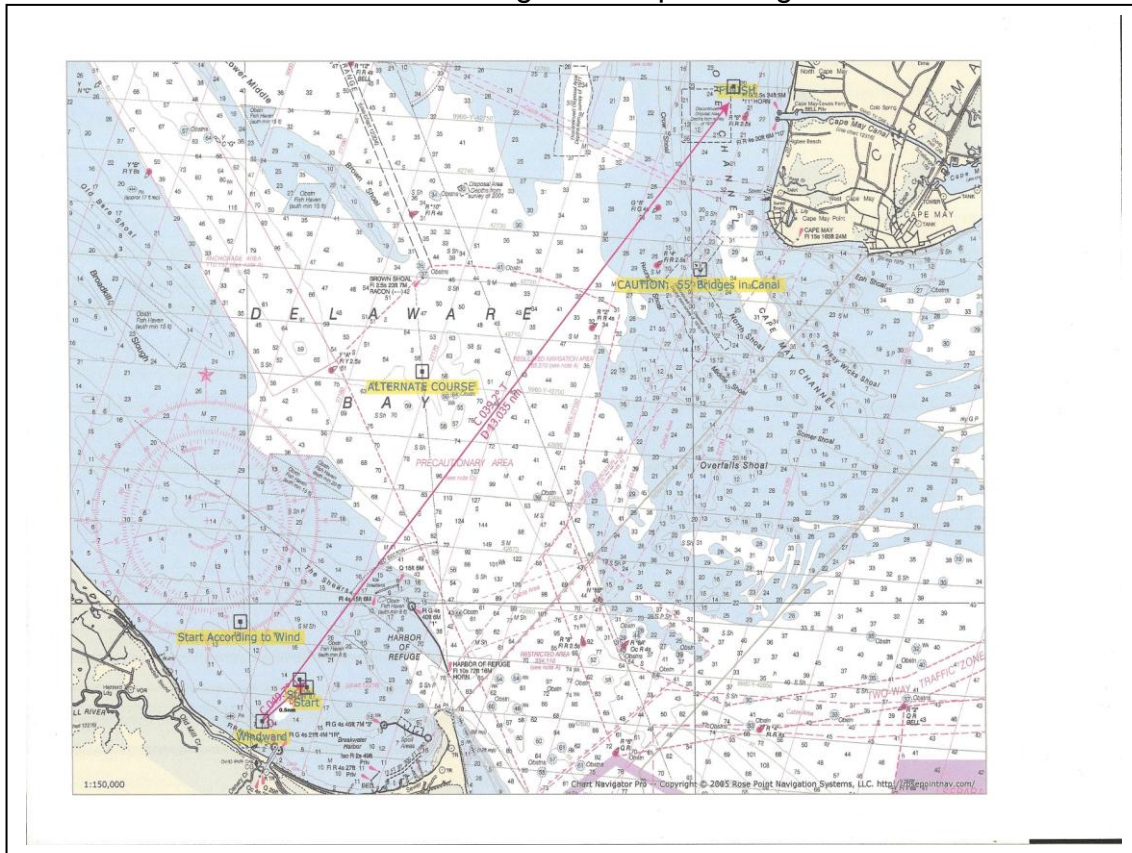
## 9. The Course Saturday

9.1 Course A Ocean Course showing 0.5nm upwind leg. The mark or gate at Prissy Wicks Shoal will be located approximately at  $38^{\circ}52.7' N$   $74^{\circ}55.8' W$ .





## 9.2 Course "B" Alternate Course showing 0.5nm upwind leg.



9.3 Saturday's start for course A and B will be 0.5nm downwind from the weather mark located approximately at 38°48.1'N 75°09.7'W. If the weather mark begins, ends, or bounds a leg of the course then how to round that mark (port or starboard) will be announced on VHF 78 before the first signal.

9.4 Saturday's "A" course shows an optional gate at Prissywick shoal. If Prissywick shoal will be a gate or a mark will be announced at the skipper's meeting (Friday Evening) and may be also broadcast on CH78 prior to the start of each of the two starts.

## 10. Marks

10.1 Marks 1, 2 and 3 will be yellow. Replacement marks will be red.

## 11. Checking In

11.1 All yachts that may compete in a day's race must check in with the RC boat before her fleet's first signal of that day.

## 12. The Starts

12.1 The start shall be between an orange flag on the RC boat and a red mark at the port end of the line. The start will be signaled in accordance with RRS 26.

In Friday's races there will be three starts: Spinnaker followed by J70 then non-spinnaker. The starting signal for one fleet will be the warning signal for the next fleet. In Friday's races a yacht that starts more than 10 min after her starting signal will be scored DNS/DNC without a hearing. In Saturday's race there will be two starts. Non-

spinnaker followed by all other classes. On Saturday a yacht that starts more than 10 min after her starting signal will be scored DNS/DNC without a hearing. This changes RRS A5.

### **13. Recalls**

Individual recalls will be signaled in accordance with RRS 29.1. In addition the Race Committee will attempt to broadcast the sail number of each recalled yacht on channel 78. If RRS 30.1 or 30.3 or 30.4 is in effect, yachts which are OCS in the minute before the start may be notified before the starting signal. The following shall not be grounds for redress:

- a) Failure of the yacht to receive or understand a recall broadcast.
- b) A yacht's position in the sequence of broadcast numbers.

### **14. Changes of Course**

Shall be governed according to RRS 33. See 10.1 also.

### **15. The Finish**

Friday races: The finishing line will be between a staff displaying an orange flag on a Race Committee boat and a red mark at the opposite end of the line. **On Friday the finishing line is closed with no signal unless a boat is finishing.** A boat that breaks this rule will be scored DNF without a hearing. Saturday race: The finishing line will be between a staff displaying an orange flag on a Race Committee boat and a tetrahedron at the finishing line location provided in item 9 "The Course".

### **16. Time Limits**

#### **Friday Races:**

16.1 Time limit for first boat to finish in each class will be 1 hour.

16.2 Subsequent boats must finish within 20 minutes after first boat in its class to finish. Boats arriving after that time will be scored TLE and be scored one point more than the last yacht finishing within the time limit.

#### **Saturday Race:**

16.3 Time limit for first boat in a class to finish will be 5 hours.

16.4 Subsequent boats must finish 1 hour after the first boat in its class to finish. Boats in that class arriving after that time will be scored TLE and be scored one point more than the last yacht finishing within the time limit.

### **17. Penalties**

Alternative penalty rules V1 and V2 are in effect.

### **18. Protests**

18.1 The protesting yacht shall display a red flag flown conspicuously from the backstay in accordance with RRS 61.1.

18.2 Protests shall be written on USSA forms and lodged with the Protest Committee within the Protest Time which will begin at the time of the docking of the Race Committee Signal boat and end 45 minutes thereafter. Docking time will be posted on the Official Notice Board located in the clubhouse.

18.3 Protest notices will be posted within 30 minutes after the end of the Protest Time limit to inform competitors where and when there is a hearing in which they are interested parties or witnesses.

18.4 The Protest Committee will hear protests in approximately the order of receipt.

### **19. Scoring**

19.1 The Low Point Scoring System RRS Appendix A will be used. Friday's two buoy race scores will each count as 25% of a competitor's total score. Saturday's distance race will count as 50% of a competitor's total score. Scores will be separate by fleet J70, spinnaker and non-spinnaker. If only one race is completed on Friday that race will count as 1/3 of a competitor's total score and Saturday's race will count as 2/3.

#### **20. Radio Equipment**

All boats shall carry a VHF radio capable of receiving and transmitting. A yacht shall neither make nor receive radio transmissions while racing that are not available to all yachts. The Race Committee will use VHF channel 78 for communications to the competitors.

#### **21. Safety**

21.1 A yacht which retires from a race shall notify the Race Committee on VHF channel 78 before leaving the course area. If a yacht is not able to notify the Race Committee prior to departure from the course due to damage or injury she shall notify the Race Committee as soon as her situation safely allows.

21.2 This race is being conducted in a major commercial traffic area and across shipping lanes. Give way to ships and ferries that are sailing in channels and may have restricted maneuverability. Monitor ship to ship VHF channel 13. Remember the rule "ships much bigger than you always have the right of way".

#### **22. Responsibility**

The responsibility for supervising this race is solely that of the Lewes Yacht Club who assumes no liability whatsoever in connection therewith. The responsibility of the Race Committee is to provide a start and to record times/position at a finish. The decision to start, continue or retire is the responsibility of the competitor.

#### **23. Tides at Lewes.**

|          |          |           |          |
|----------|----------|-----------|----------|
| Friday   | 08/03/18 | 1358 High | 2010 Low |
| Saturday | 08/04/18 | 1450 High | 2028 Low |

#### **24. Prizes**

Prizes will be awarded.