



**Susan Hood Trophy Race  
Presented by driveHG.ca**

**Part of the**

**Ontario Sailing Offshore Keelboat IRC & PHRF  
Championships**

**May 31 – June 1, 2019**

**Lake Ontario Offshore Racing of the Port Credit Yacht Club**

**Sailing Instructions**

**Version V01.01/Date 2019-05-28**

**With Amendment 1**

[www.loor.ca](http://www.loor.ca)

**The Registration and Race Document Web Site is**

[www.yachtscoring.com/emenu.cfm?eID=6125](http://www.yachtscoring.com/emenu.cfm?eID=6125)

*Amendments*

#	Date	Section	Change
1	2019-05-28	Diagrams	Fixed diagrams, including adding missing diagram and references to diagrams in SIs

The notation '[DP]' in a rule in the Notice of Race (NOR), Sailing Instructions (SIs) or other additional document that is a rule means that the penalty for a breach of that rule may, at the discretion of the protest committee, be less than disqualification.

The notation '[NP]' in a rule in the Notice of Race (NOR), Sailing Instructions (SIs) or other additional document that is a rule means that the penalty for a breach of that rule will not be grounds for a protest by a sailboat.

## 1 RULES

1.1 The race will be governed by the rules, as defined in The Racing Rules of Sailing (RRS).

1.2 The prescriptions of Sail Canada to the RRS apply for the entire race; including in US waters, see [www.sailing.ca/files/RRS\\_2017\\_2020\\_Sail\\_Canada\\_Prescription\\_Final\\_EN.pdf](http://www.sailing.ca/files/RRS_2017_2020_Sail_Canada_Prescription_Final_EN.pdf)

1.3 Sail Canada is the appeal authority for this event, including for incidents in US waters.

1.4 Part 2 of the RRS will be replaced with the Right of Way Rules of the International Regulations for Preventing Collisions at Sea as amended by Transport Canada between 2000 and 0600 EDT. However, Part 2 of the RRS will always apply to any set of starting sequences, from the first warning of the set until 30 minutes after the last start signal of the set.

For Right of Way Rules of the International Regulations for Preventing Collisions at Sea, see

[laws-lois.justice.gc.ca/eng/regulations/C.R.C.,\\_c.\\_1416/page-4.html](http://laws-lois.justice.gc.ca/eng/regulations/C.R.C.,_c._1416/page-4.html)

1.5 Offshore Special Regulations (OSR) [DP] [NP]

The event is a Category 3 Event under the World Sailing Offshore Special Regulations. The Offshore Special Regulations for Category 3 with prescriptions from Sail Canada and amended by the Lake Ontario Offshore Racing apply, as documented in:

*Lake Ontario Offshore Special Regulations for Category 3 Monohulls*

*Lake Ontario Offshore Special Regulations for Category 3 Multihulls*

These are available at the Registration and Race Document Web Site.

1.6 Applicable Class Rules

### **Doublehanded & Fully Crewed sailboats racing in**

IRC IRC Rules 2019 Parts A, B and C shall apply and IRC is the Handicap Measurement Authority.

PHRF PHRF- LO Rules shall apply and PHRF-LO is the Handicap/Masurement Authority.

Multihull GLMRA Rules shall apply and GLMRA is the

Handicap/ Measurement Authority.

**Singlehanded sailboats racing in**

Monohull PHRF- LO Rules shall apply and PHRF-LO is the Handicap/Measurement Authority.

Multihull GLMRA Rules shall apply and GLMRA is the Handicap/ Measurement Authority.

1.7 The event is governed by *PCYC's Visiting Yacht's Policy*, including pre-registration, available under the link "Additional Event Links" on the Registration and Race Document Web Site.

1.8 The Racing Rule(s) will be changed as outlined below.

1.8.1 RRS 28.1

Is modified by replacing first sentence with

A boat shall *start* or be assessed the time penalty in 1.8.2, sail the course described in the sailing instructions and *finish*.

1.8.2 RRS 29.1, RRS 64.1 (a) and RRS Appendix A5

Are modified such that a sailboat that is OCS at the start of her class is assessed a 45-minute penalty. A sailboat starting six minutes before her Start Signal may be protested by the Race Committee, and the Protest Committee will apply an appropriate penalty if the sailboat is found to have infringed this.

1.8.3 RRS 41 Outside Help

"Outside Help" is modified herein to allow all forms of communication. Each sailboat may communicate with any person, competitor, sailboat, or outside source for information available using any means available throughout the race.

1.8.4 RRS 42.3 Exceptions

Is modified so an engine may be used for generating electrical power provided that such use does not advance the boat's position.

1.8.5 RRS 51 Movable Ballast

Is modified to allow canting keels and water ballast, assuming the applicable class/measurement/handicap rules permit them.

1.8.6 RRS 52 Manual Power

Is modified to allow canting keels and water ballast, assuming the applicable class/measurement/handicap rules permit them.

All movable ballast systems must be capable of manual operation if the powered systems are inoperable.

Is modified to allow the use of power auto helm devices.

1.8.7 RRS 60.1 (a)

Breaches of specific Sailing Instructions, as denoted in the Sailing Instructions by “[NP]”, will not be grounds for a protest by a sailboat.

1.8.8 RRS 62.1

Is modified to allow the Race Committee the ability to announce sailboats subject to RRS 29.1. [NP]

Is modified to allow the Race Committee the ability to announce a sailboat’s completion at the finish. [NP]

1.8.9 RRS 64.1

Is modified that for infringements of the rules other than Part 2, the Jury may award a lesser penalty than DSQ, unless stated otherwise in the Notice of Race or Sailing Instructions.

1.8.10 RRS A3

Is amended by adding the following:

If any handicap or rating system used does not state the number of significant digits for the corrected time, the corrected time shall be calculated to the nearest second.

1.8.11 RRS A4 & A5

Is modified such that a sailboat not starting within 30 minutes of her starting signal will be scored DNS. [DP] [NP]

1.9 All sailboats shall comply with Ontario Environmental Protection Act Regulations #343 as documented at:

[www.e-laws.gov.on.ca/html/regs/english/elaws\\_regs\\_900343\\_e.htm](http://www.e-laws.gov.on.ca/html/regs/english/elaws_regs_900343_e.htm)

Any penalty assessed under this rule may be used by the Organizing Authority as a consideration on whether to accept future registrations by this sailboat or person in charge. [DP]

1.10 The Person in Charge of a participating sailboat shall accurately and fully maintain the electronic crew list for the sailboat on the Race Document Web site. [DP] [NP]

1.11 Class rule(s) will be changed as follows:

IRC 21.6.1

Sailboats are allowed to carry one additional spinnaker over the number listed in the sailboat’s IRC certificate.

IRC 22.4.2

Sailboats may choose to use the maximum crew number printed on the certificate or the crew number multiplied by 85kg as the maximum crew weight.

## 2 NOTICE TO COMPETITORS

Notices to Competitors will be posted on the official notice board located in the tent adjacent to the PCYC club house and on the Online Notice Board at [http://www.yachtscoring.com/notice\\_board.cfm?eid=4532](http://www.yachtscoring.com/notice_board.cfm?eid=4532)

### 3 **CHANGES TO SAILING INSTRUCTIONS**

Any change to the Sailing Instructions will be posted on the SHTR Official Notice Boards prior to 1800 EDT May 31, 2019.

### 4 **SIGNALS MADE ASHORE**

Signals made ashore will be displayed on the main flag pole of the PCYC.

### 5 **SCHEDULE OF RACES**

5.1 The first warning signal is at 1945 EDT, Friday, May 31, 2019

5.2 Classes, division and fleet, splits and starting sequences, including class flags, for RRS 26, shall be posted by Thursday, May 30, 2019 on the Race Document Web Site and will be available at the Mandatory Participants' Meeting at 1800 EDT, May 31, 2019.

### 6 **CLASS FLAGS**

See 5.2

### 7 **RACING AREA**

The race will occur in the western end of Lake Ontario.

### 8 **THE COURSES**

Start	LOOR Start Mark	
	Niagara Bar Lighted Buoy 2	Mark left to starboard
	Burlington Weather Tower, AKA Van Wagners Beach Light	Mark left to starboard
Finish	PCYC Finish Mark for Onshore Finish & PCYC Shore Station	

### 9 **MARKS**

9.1 Marks in Alphabetical Order

MARK REFERENCE	DESCRIPTION
Burlington Weather Tower, AKA Van Wagners Beach Light	A tower with a flashing yellow light located at approximately 43° 16.22' N 079° 45.56' W.
LOOR Start Mark	Located approximately 0.5 NM on a bearing of 150° magnetic from the entrance to the harbour at Port Credit Yacht Club located at approximately 43° 33.41' N 079° 32.90 W

Niagara Bar Lighted Buoy 2	A red buoy marked “2”, with a flashing red light (4s.), located at approximately 43°19.04'N, 79°04.23'W, 3.4 NM north of the light at Fort Niagara. (Niagara Bar light buoy 2)
PCYC Finish Mark for Onshore Finish	A white buoy with orange stripes and fixed low intensity flashing amber (yellow) light, lighted only overnight, approximately 155 mag 0.2 NM from the shore station approximately at 43°33.62' N 079°33.22' W. See Diagram 2, The Finish - Onshore. Race Committee may post the actual set location on the Official Notice Boards
PCYC Race Committee Shore Station	A mast flying an orange flag, located on the headland immediately west of the entrance to the harbour at PCYC approximately at 43° 33.76' N 079° 33.45' W. See Diagram 2 The Finish – Onshore

9.2 Marks as listed, above, should be at the identified latitude and longitude location. If a mark is not at the identified latitude and longitude location, or otherwise cannot be seen due to poor visibility, then the sailboat shall round the identified latitude and longitude location as indicated in the Sailing Instructions and continue with the race.

9.3 A record shall be entered in the sailboat’s log detailing the timeline and efforts made to find the mark and the time that the mark’s identified latitude and longitude was deemed to have been rounded. The sailboat’s GPS tracking record shall be saved and provided for evidentiary review by the Race Committee on request.

## 10 THE START

10.1 Races will be started by using rule 26, with an interval of at least one minute between a starting signal and the warning signal for the next start.

10.2 The starting line will be between an inflatable mark and the halyard carrying an orange flag on the Race Committee signal vessel.

10.3 After the first warning signal and prior to her warning signal, a sailboat shall keep clear of the starting area that extends one-quarter of the length of the starting line ahead of and behind the starting line. It shall also extend one-quarter of the length of the starting line past either end of the starting line; see Diagram 1, The Starting Area.

10.4 *If and only if, code flag “L” is displayed, on the Race Committee Signal*

Vessel, sailboats shall sail on starboard tack close to the stern of the Race Committee Signal Vessel and shall report its sail number. Check in will not be complete until the Race Committee acknowledges the sailboat. Sailboats checking in must comply with 10.3. Check in by VHF radio or cell phone may not be accepted. [NP]

10.5 A sailboat starting later than 30 minutes after her starting signal will be scored Did Not Start. Any sailboats starting within the time limit and if the Race Committee is no longer on station, shall radio the Race Committee VHF Channel 71 Canadian when she is starting. [NP]

10.6 If any part of a sailboat's hull, crew or equipment is on the course side of the starting line during the minute before her starting signal or she is subject to SI 1.8.2, the Race Committee may announce this on the VHF Channel 71 Canadian. Failure to make a broadcast or its order will not be grounds for a request for redress. [NP]

## **11 THE FINISH**

11.1 The finish is between the Finish Mark and the Race Committee Shore Station.

11.2 Each sailboat shall call/hail the Race Committee Shore Station approximately three (3) NM from the finish on VHF Channel 71 Canadian. Sailboats are required to maintain radio contact with the shore station throughout the finish to ensure correct identification of the finishing sailboat. When finishing between sunset and sunrise, all sailboats shall announce their sail numbers, immediately prior to finishing, and record their finish time.

11.3 After a sailboat has finished, the Race Committee may acknowledge the completion by providing the sailboat's finish time or other signal. This acknowledgement, the failure to make the acknowledgement or its order, will not be grounds for a request for redress. This changes RRS 62.1 (a). [NP]

## **12 PENALTY SYSTEM**

The Scoring Penalty Rule 44.3 will apply, with 44.3 (c) changed so that the penalty assessed will be 30 minutes added to the sailboat's elapsed time. A sailboat taking a scoring penalty shall complete the Scoring Penalty Form and file it with the race committee within two hours of her finish.

## **13 TIME LIMITS AND TARGET TIMES**

13.1 There is no time limit

13.2 See SI 16 for withdrawals.

## **14 PROTESTS AND REQUESTS FOR REDRESS**

14.1 Protest forms are available at the PCYC Communications Centre located inside the front door of the clubhouse.

- 14.2 Protests shall be filed at the PCYC Communications Centre (inside the front door of the clubhouse) or online via the Race Document Web Site
- 14.2.1 If filed at PCYC Communications Centre, then within two (2) hours of finishing except that if a boat's finish time is after 1800 and before 0600 of the next day, she shall file her protest there by 0900 of that next day.
- 14.2.2 If filed online via the Race Document Web Site, then within two (2) hours of finishing.
- 14.3 Notices of protests by the Race Committee or Protest Committee will be posted to inform boats under rule 61.1(b) on the Official Notice Boards.
- 14.4 Hearings will take place at 1900 EDT, Tuesday June 4, 2019 at PCYC.

## **15 SCORING**

- 15.1 Monohulls, singled handed, double handled and fully crewed - PHRF-LO Time on Time (TOT) alternative formula or IRC Rule
- 15.2 Multihulls, fully crewed, - GLMRA formula
- 15.3 Scoring inquiries can be submitted online via the Race Document Web Site.

## **16 SAFETY REGULATIONS [NP]**

- 16.1 Sailboats are encouraged to implement their own check-in process and with individuals ashore via phone, email or other mechanism.
- 16.2 A sailboat withdrawing from the race shall wear her ensign and keep clear of other competitors.
- 16.3 The Race Committee shall be notified of a boat's withdrawal at the earliest possible opportunity on VHF Channel 71 Canadian, at the following telephone number 1-866-462-8828, then follow the prompts, or at the email address of [racecommittee@loor.ca](mailto:racecommittee@loor.ca) and provide the following information:
- Yacht name and sail number
  - Location
  - Status of yacht and crew
  - Harbour to which she is proceeding and estimated time of arrival
  - After withdrawing and until secure in harbour, the yacht shall monitor VHF Channel 16 CONTINUOUSLY.
  - After reaching harbour and securing the yacht, the skipper shall again contact the R/C, and notify them of location and status of yacht and crew.
- 16.4 Any yacht in difficulty WHETHER WITHDRAWING OR NOT, shall immediately contact the Coast Guard, AND any other vessel in the vicinity and make them aware of her situation, and thereafter notify the Race Committee.
- 16.5 Sailboats may check in with the Race Committee at any time during the race to advise Race Committee of their position at 1-866-462-8828 or the



email address of [racecommittee@loor.ca](mailto:racecommittee@loor.ca) .

16.6 Failure of a sailboat to make every reasonable effort, under the circumstances, to comply with 16.3, may result in protest by the Race Committee. The Organizing Authority may use the results of this hearing to determine whether to accept future registrations by this sailboat or owner. [NP]

16.7 [NP] All sailboats racing shall be required to maintain a log of significant events, mark roundings, calls to the Coast Guard, and engine on and off for charging only.

## **17 EQUIPMENT AND MEASUREMENT CHECKS [NP]**

A sailboat may be inspected at any time during the period from the Mandatory Participants' Meeting until three hours after her finish. The Race Committee may, at the finish of the race, direct a sailboat to proceed directly to a designated location at Port Credit Yacht Club. A boat which fails to follow such directions or which subsequently fails the inspection may be protested by the Technical Committee.

## **18 COMMUNICATION**

18.1 Marine VHF Channel 71 Canadian shall be used by the Race Committee for radio communication during the race.

18.2 Each sailboat shall monitor VHF Channel 71 from one hour before her warning signal until 90 minutes after starting and from approximately one hour before finishing until 30 minutes after finishing.

18.3 Sailboats are encouraged to talk to other sailboats in the race on marine VHF channel 71 throughout the race, especially at 1000 and 2200 EDT.

18.4 Sailboats shall monitor marine VHF channel 16 at all other times.

## **19 PRIZES**

Prizes will be given as listed on the NOR or at [www.loor.ca](http://www.loor.ca) .

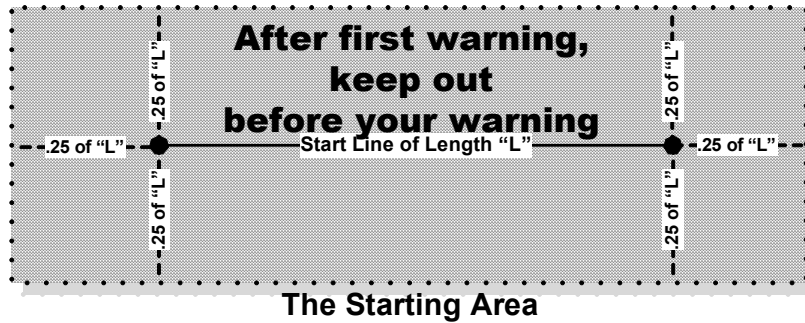
## **20 DISCLAIMER OF LIABILITY**

Sailing is an activity that has an inherent risk of damage and injury. Competitors in this event are participating entirely at their own risk. See RRS 4, Decision to Race. The race organizers (organizing authority, Race Committee, Protest Committee, host club, sponsors, or any other organization or official) will not be responsible for damage to any sailboat or other property or any injury to any competitor, including death, sustained as a result of participation in this event. By participating in this event, each competitor agrees to release the race organizers from any and all liability associated with such competitor's participation in this event to the fullest extent permitted by law.

## **21 INSURANCE [NP]**

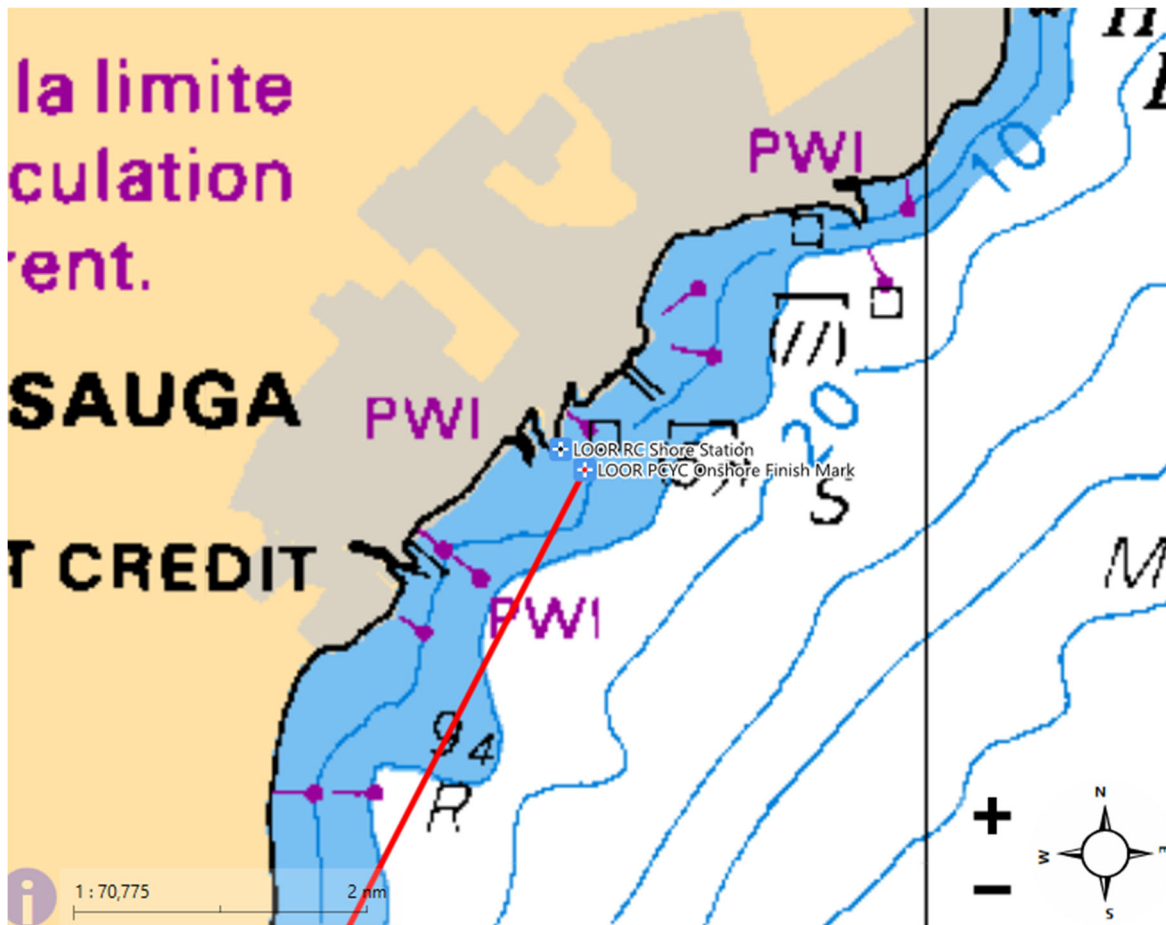
Each participating sailboat shall be insured with a valid third-party liability insurance policy with a minimum cover of \$2,000,000 CAD per event for Canadian boats and an adequate level of third-party liability insurance applicable in Canadian and US waters for non-Canadian sailboats.

## Diagram 1 The Starting Area

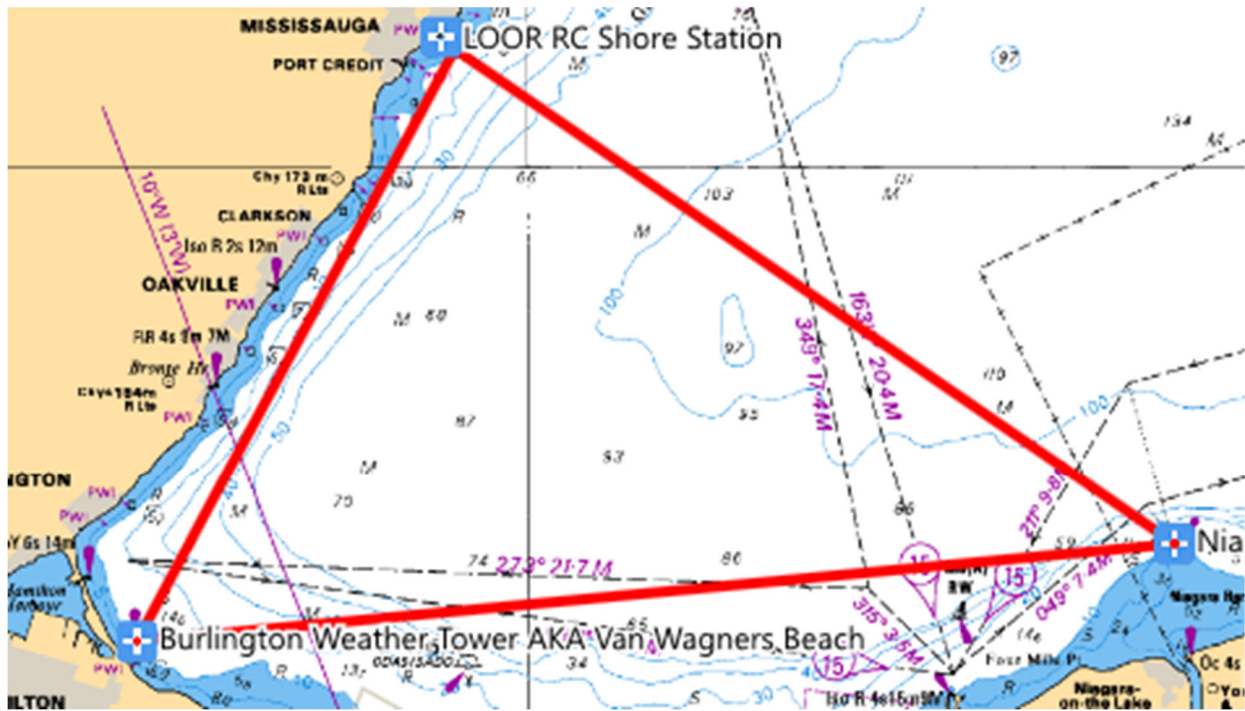


After the first warning signal for a race and prior to her warning signal a sailboat shall keep clear of the starting area that extends one-quarter of the length of the starting line ahead of and behind the starting line. It shall also extend one-quarter of the length of the starting line past either end of the starting line.

## Diagram 2 The Finish



**Diagram 3  
The Course**



- For a description and locations of the marks, see SI 9 Marks
- For details of the Finish, see SI 11 The Finish

## Contact Information

### **SHTR Race Committee**

Web site [www.loor.ca](http://www.loor.ca)  
Email to RC [racecommittee@loor.ca](mailto:racecommittee@loor.ca)  
Phone to RC 1-866-462-8828

### **PCYC**

Web site [www.pcy.net](http://www.pcy.net)  
Phone 905-278-7911