



Ted Hood Regatta™ • Marblehead 2019

HOST: THE Eastern Yacht Club
August 23-25, 2019

SAILING INSTRUCTIONS

The Organizing Authority (OA) is the Storm Trysail Club

**The Host Club is the Eastern Yacht Club (official host),
in association with the Boston Yacht Club and the Corinthian Yacht Club**

1 RULES

- 1.1 The regatta will be governed by the rules as defined in *The Racing Rules of Sailing* (RRS); the 2019 PHRF New England (PHRF-NE) By-laws, and ORRez policies, procedures and by-laws and class rules for one-design classes.
- 1.2 For ORRez divisions, the wind range will be announced on VHF prior to the Warning Signal for each class per race and will not change once set. RC choice of wind range will not be grounds for redress: this changing RRS 62.1. The wind ranges that will be used for computing corrected times will be "light" (less than 8 knots) or "medium" (8 to 15.9 knots) or "heavy" (16 knots or more).
- 1.3a 1.3b For the J105 Class, rules have been changed to allow a mast-mounted spinnaker halyard cam or cam cleat. *
- 1.4a J/70 Class Rules III.I.3 (Support Boats) and III.I.4 (Corinthian Division) will apply to J/70 Class competitors.
- 1.4b J/70's only shall have bow numbers. The Organizing Authority is not responsible for supplying bow numbers.
- 1.4c The US Sailing Prescriptions will be available to the non-US sailors in the J/70 Class.
- 1.5 Blank.
- 1.6 Addendum 2 are the Sailing Instructions for the Fully Crewed and Double Handed Overnight Race
- 1.7 Addendum 3 are the Sailing Instructions for the Pursuit Race on Sunday August 25, 2019

2 NOTICES TO COMPETITORS

Notices to competitors will be posted on the official notice board located on Yachtscoring at www.yachtscoring.com. In addition, as a courtesy only, an attempt will be made to post notices at the Eastern Yacht Club on the glass wall of the Sailing Office, in the PC Donald R. Humphreys Yardarm at the Boston Yacht Club, and the notice board located near the trophy room at the Corinthian Yacht Club.

3 CHANGES TO SAILING INSTRUCTIONS

Any change to the sailing instructions will be posted on the official notice board before 0800 on the day it will take effect, except that any change to the schedule of races will be posted by 2000 on the day before it will take effect.



Ted Hood Regatta™ • Marblehead 2019

4 SIGNALS MADE ASHORE

- 4.1 Signals made ashore will be displayed from the flagpole yardarm at the Eastern, Boston, and Corinthian Yacht Clubs. Flag “AP” with two sound signals means “races have been postponed for all classes”;
- 4.2 Flag “AP” over one or more Class Flags with two sound signals means “races have been postponed for the indicated Class(es)”.
- 4.3 When the AP flag is displayed ashore, ‘1 minute’ is replaced with ‘not less than 60 minutes’ in Race Signals.

5 SCHEDULE

- 5.1 Racing is scheduled to take place on August 23th, 24th, and 25th.

5.2 Thursday August 22, 2019

1700 hrs to 1900 hrs Registration at the Eastern Yacht Club
1900 hrs Skippers Meeting

Friday August 23, 2019

0730 hrs to 0900 hrs Registration at the Eastern Yacht Club
1200 hrs First gun, Lines 1, 2 and 3 (J/70’s only); multiple races to follow
1630 hrs First gun, Overnight Doublehanded and Fully Crewed classes

Saturday August 24, 2019

1200 hrs First gun, Lines 1, 2 and 3; multiple races to follow

Sunday August 25, 2019

1145 hrs First gun, Pursuit Race
1200 hrs First gun, Lines 1, 2 and 3; multiple races to follow
1500 hrs No Warning signal after this time

- 5.3 It is the intention of the Race Committee to sail as many races as practical.
- 5.4 Flag A displayed, with no sound, while boats are finishing, means “No more racing today.”

6 DIVISIONS, CLASS FLAGS, STARTING SIGNALS AND MARKS

- 6.1 Division splits, initial starting order, class streamer color, and description of marks will be defined in SI Addendum 1. It will be posted on the official notice board no later than 1600hrs EDT, Thursday, August 22, 2019 and copies will be available for all competitors at registration.
- 6.2 Warning flags for each one design class will be the class insignia for that one design class.
- 6.3 Warning/Class flags for ORRez and PHRF classes will be as follows:
ORRez: Numeral Pennant 1 Warning: Class Flag Classes shall display their numeral & class flag
PHRF: Numeral Pennant 2 Warning: Class Flag Classes shall display their numeral & class flag
JAM: Numeral Pennant 3 Warning: Class Flag Classes shall display their numeral & class flag
- 6.4 Any and all subsequent starting orders will be at the discretion of the race officer for each racing line.

**Ted Hood Regatta™ • Marblehead 2019****7 RACING AREAS**

The direction of racing areas will be defined in Illustration A, 'Line Area Distance and Compass Course' from Marblehead Bell.

8 COURSES

- 8.1 Courses are shown in Illustration B, including the order in which marks are to be passed, and the side on which each mark is to be left.
- 8.2 The approximate compass bearing from the leeward mark to Mark 1, and the designated course will be displayed in the forward rack of the race committee signal boat. The distance from the leeward mark to Mark 1 will be displayed in the aft rack of the race committee signal boat.
- 8.3 Gates: If a gate is not in place, boats shall round the existing leeward mark to port.
- 8.4 Offset Mark: The offset mark will be the same color as Mark 1. In the event of a change of course an offset mark may not be set.
- 8.5 A green flag flown no later than five minutes before the start means "Mark 1 for the class about to start will be green. This applies to each rounding of Mark 1 by this class." This changes RRS 27.1 and race signals.
- 8.6 Courses for the Fully-crewed and Doublehanded Classes, and the Pursuit Race are described in SI Addenda 2 and 3, respectively.

9 MARKS

- 9.1 Turning mark colors utilized by each line will be the following:
 - Line 1: CYC will use Orange Marks; J/105
 - Line 2: EYC will use Yellow Marks; ORRez and PHRF
 - Line 3: BYC will use Red Marks; J/70 and JAM. Note JAM will use MassBay marks and courses.
- 9.2 Start and Finish Marks will be green tetrahedrons.

10 THE START

- 10.1 A boat shall check in before her first start of each day and shall advise the race committee of the number of souls on board. Check in by radio is not allowed.
- 10.2 The starting line will be between a staff displaying an orange flag on the race committee signal vessel and the course side of the port-end starting mark.
- 10.3 The failure to hail, the order of hail, the hail of some but not all, the failure of a boat to hear such hail or the untimely hail of OCS boats will not be grounds for redress. This changes RRS 62.1(a).

11. CHANGE OF THE NEXT LEG OF THE COURSE WHILE RACING

- 11.1 To change the next leg of the course when Mark 1 is yellow, orange, or red, the race committee will set a pink change mark (or move the finishing line) and remove the original mark as soon as practicable.
- 11.2 When in a subsequent change a new mark is replaced, it will be replaced by an original mark. When Mark 1 is green pursuant to SI 8.5, a change mark will be green and identified by a black band, and a subsequent change will be un-banded.

**Ted Hood Regatta™ • Marblehead 2019****12 THE FINISH**

- 12.1 The finishing line will be between a staff on a race committee boat from which a blue flag is displayed and the nearby Finishing Mark.
- 12.2 Competitors retiring from racing shall report to the Race Committee before leaving the racing area or as soon as practicable once on shore.

13 PENALTY SYSTEM

- 13.1 RRS 44.1 is changed so that appendix V applies for One Design classes only.
- 13.2 Appendix T will apply for all classes.
- 13.3 RS 44.3 will apply for **ORRez** and JAM (PHRF) classes only.
- 13.4 The Protest Desk will be located near the Model Room of the Eastern Yacht Club. Protests will be heard at the same location. Notices to competitors will be posted on the official notice board located on Yachtscoring at www.yachtscoring.com. In addition, as a courtesy only, an attempt will be made to post notices at the Eastern Yacht Club on the glass wall of the Sailing Office, in the PC Donald R. Humphreys Yardarm at the Boston Yacht Club, and the notice board located near the trophy room at the Corinthian Yacht Club .

14 TIME LIMIT AND FINISH WINDOW

The time limit for the first boat in each class to finish is two hours. Any boat that has not finished within 30 minutes after the first boat in its class has finished will be scored DNF without a hearing. This changes rules 35 and 63.1 and A5.

15. PROTESTS AND REQUESTS FOR REDRESS

- 15.1 Protest forms are available at the protest desk at the Eastern Yacht Club. Protests and requests for redress or reopening shall be delivered there within the appropriate time limit.
- 15.2 The protest time limit is one hour after the docking of the race committee signal boat for the applicable line.
- 15.3 The times of protest hearings and the parties involved will be posted on the official notice board within 15 minutes after the protest time limit expires.
- 15.4 On the last scheduled day of racing a request for reopening a hearing shall be delivered (a) within the protest time limit if the requesting party was informed of the decision on the previous day; or (b) no later than 30 minutes after the requesting party was informed of the decision on that day. This changes RRS 66.
- 15.5 On the last scheduled day of racing a request for redress based on a protest committee decision shall be delivered no later than 30 minutes after the decision was posted. This changes RRS 62.2.

16 SCORING

- 16.1 The scoring system is as follows: Low Point System, RRS Appendix A, except that a boat failing to finish within the time limit will be scored Did Not Finish (“DNF”) and scored points equal to the number of finishers in that race plus one , but in no case scored more than the number of starters. This changes RRS Appendix A2.1.
- 16.2 No boat’s score will be excluded, unless required under its class rules. This changes RRS Appendix A2.1.



Ted Hood Regatta™ • Marblehead 2019

16.3 One race is required to be completed to constitute a regatta.

17 ADVERTISING

17.1 Boats will be required to display the boom stickers on both sides of the boat for the duration of the event. ("DP").

17.2 A boat and her crew shall comply with World Sailing Regulation 20, Advertising Code.

18 RADIO COMMUNICATION

18.1 Except in an emergency, a boat shall neither make radio transmissions while racing nor receive radio communications not available to all boats. This restriction also applies to mobile telephones and other electronic devices.

18.2 All boats must carry a working VHF radio. At the beginning of each day there will be an announcement at approximately 10 am on Channel 72 which may include information from the race committee.

18.3 Emergency conditions shall be reported directly to the race committee on the assigned frequency for its line.

18.4 Division Channels are as follows:

Line 1 VHF 71 - Corinthian Yacht Club Race Committee

Line 2 VHF 78 - Eastern Yacht Club Race Committee

Line 3 VHF 72 – Boston Yacht Club Race Committee

19 PRIZES

Daily Prizes will be awarded after racing each day. Overall class prizes will be awarded on Sunday, August 25, 2019.

20 MEDIA AND TELEVISION

Competitors give absolute right and permission for any photographs and video footage taken of themselves or the yacht they are sailing on during the event, to be published in any media whatsoever, for either editorial or advertising purposes, or to be used in press information.

21 DISCLAIMER OF LIABILITY

Competitors participate in the regatta entirely at their own risk. See rule 4, Decision to Race. The organizing authority will not accept any liability for material damage or personal injury, or death sustained in conjunction with or prior to, during, or after the regatta.

22 INSURANCE

Each participating boat shall be insured with valid third-party liability insurance with a minimum cover of \$300,000.00 per event or the equivalent.



Ted Hood Regatta™ • Marblehead 2019

ILLUSTRATION A – Distance and Bearing to racing lines

Below are the approximate distances and compass bearing to each race line.

Line 1:

2.20 NM at a compass bearing of 135 from Marblehead Bell RGRFL (2+1) R 6S BELL

Line 2:

1.75 NM at a compass bearing of 150 from Marblehead Bell RGRFL (2+1) R 6S BELL

Line 3:

1.5 NM at a compass bearing of 115 from Marblehead Bell RGRFL (2+1) R 6S BELL



ILLUSTRATION B-COURSES

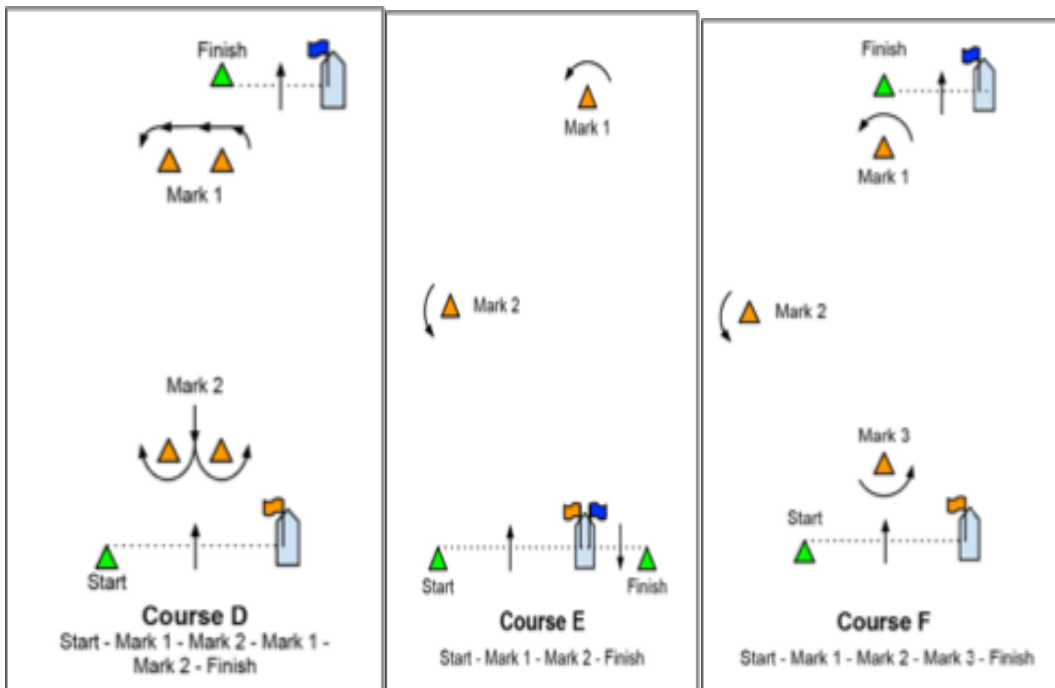
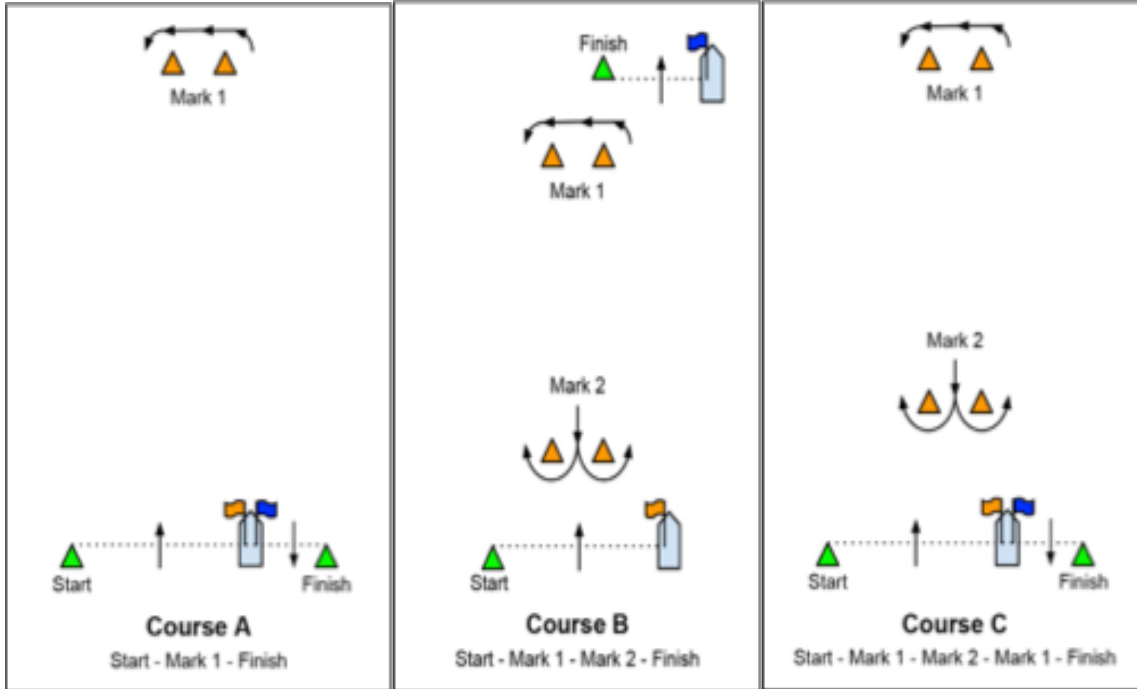
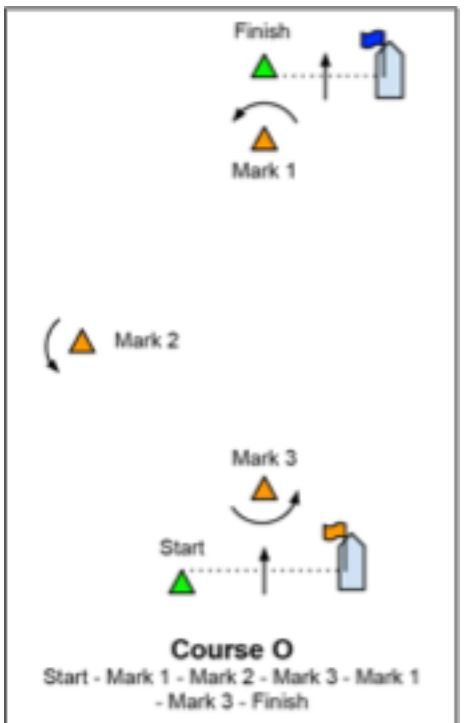
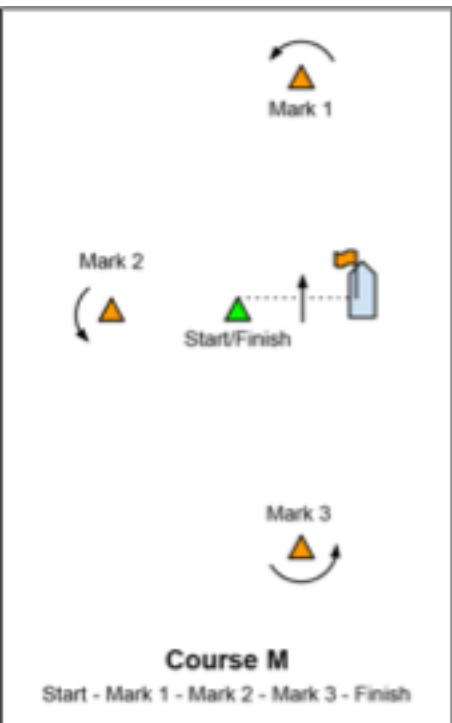
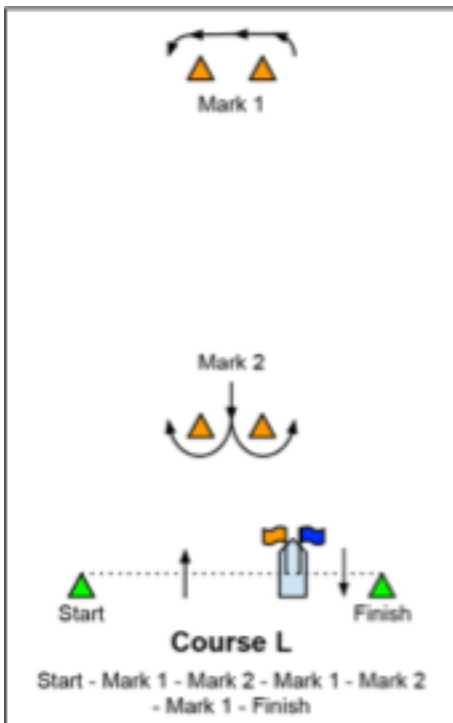
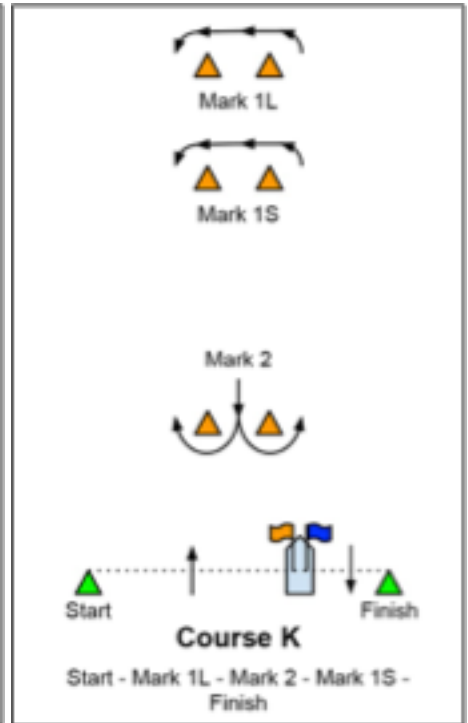
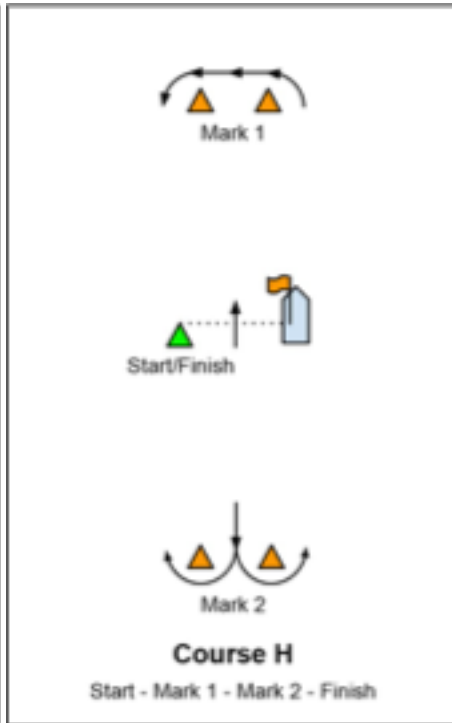
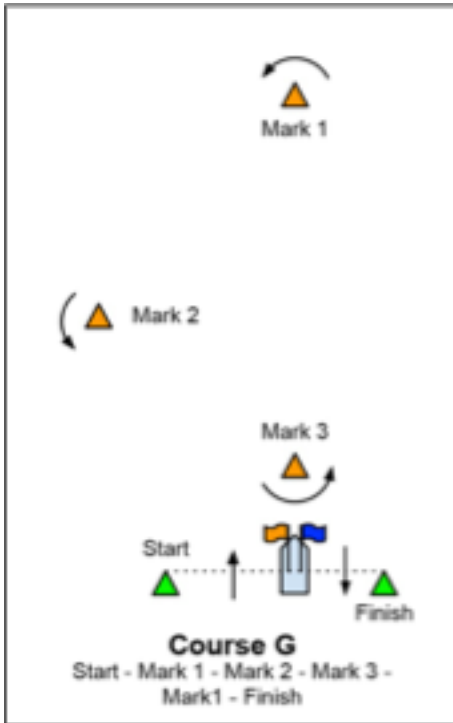


ILLUSTRATION B, CONT.





Ted Hood Regatta™ • Marblehead 2019

HOST: THE EASTERN YACHT CLUB
August 24-25

ADDENDUM 2
SAILING INSTRUCTIONS - Fully Crewed
and Doublehanded Class

Organizing Authority (OA): Storm Trysail Club

Host Club: Eastern Yacht Club (official host) along with the Boston Yacht Club and the Corinthian Yacht Club

1. Rules

- 1.1. The regatta will be governed by the rules as defined in The Racing Rules of Sailing.
- 1.2. Additionally, the regatta will be governed by the following:
 - (a) The PHRF New England (PHRF-NE) Policy, Procedures and Bylaws for boats racing under PHRF.
 - (b) The US Safety Equipment Requirements (USSER).
 - i. All yachts shall minimally comply with the US Coastal section of the USSER. Skippers may be required to certify compliance with safety requirements. Boats may be inspected at any time for compliance with the Sailing Instructions. Information may be found at: <https://www.ussailing.org/competition/offshore/safety/information/ser-world-sailing-special-regulations/>
 - (c) Except when starting, rounding or passing marks, or finishing, when a race is scheduled to continue after sunset, the *International Regulations for Preventing Collisions at Sea* ("IRPCS") will replace the *Rules of Part II* of the RRS from sunset until sunrise.
- 1.3. Wind vanes and/or autopilots may be used without penalty. This changes rule 52.
- 1.4. The running of the engine is permitted in neutral for the purposes of charging batteries only. This should be logged and provided to the CYC Race Committee upon request. The use of the engine shall never materially improve the boat's position.
- 1.5. Blank
- 1.6. Addendum 2 are the Sailing instructions for the Fully Crewed and Double Handed Overnight Race.
- 1.7. Addendum 3 are the Sailing instructions for the Pursuit Race on Sunday August 25, 2019



Ted Hood Regatta™ • Marblehead 2019

2. Eligibility

For Double handed vessels the crew is limited to 2 persons each of which shall be at least 18 years of age. A parent/child team may only be permitted with prior permission from the OA.

3. Notices to Competitors

Notices to competitors will be posted on the official notice board located on Yachtscoring at www.yachtscoring.com As a courtesy, notices may also be posted on the glass wall of the sailing office at the Eastern Yacht Club Sailing Center and PC Donald R. Humphreys Yardarm at the Boston Yacht Club, and in the hallway near the Trophy Room at the Corinthian Yacht .

4 Changes to Sailing Instructions

Any change to the sailing instructions will be posted on the official notice board located on Yachtscoring at www.yachtscoring.com As a courtesy, notices may also be posted on the glass wall of the sailing office at the Eastern Yacht Club Sailing Center and PC Donald R. Humphreys Yardarm at the Boston Yacht Club, and in the hallway near the Trophy Room at the Corinthian Yacht .

1. Any change will be posted before 0800 on the day it will take effect, except that any change to the schedule of races will be posted by 2000 on the day before it will take effect.

5. Signals Made Ashore

- 5.1. Signals made ashore will be displayed from the flagstaff of the Eastern Yacht Club. As a courtesy, signals may also be displayed on the flagstaffs of the Boston Yacht Club and the Corinthian Yacht Club.
- 5.2. When flag AP is displayed ashore, '1 minute' is replaced with 'not less than 60 minutes' in the race signal AP. This changes "Race Signals".
- 5.3. In case of postponement, radio announcements will be made at 1530 on VHF channel 72, and updates of the status of the postponement will be made at 30-minute intervals thereafter. As a courtesy, these announcements may also be emailed to all registered boats as well as being posted on the web site www.yachtscoring.com .

6. Schedule of Races

- 6.1. One Race is scheduled.
- 6.2. A boat shall check in before her first start of each day and shall advise the race committee of the number of souls on board. Check in by radio is not allowed.
- 6.3. The first warning signal is scheduled for 1630. CYC is on Channel 72.

7. Class Flags

- 7.1. A boat racing shall display, from her backstay or a stem staff, the colored streamer provided at registration. A boat without a backstay shall fly the streamer from their starboard standing rigging.

8. Racing Areas

On Friday the racing area will be Massachusetts Bay.

9. **The Courses**

Attachment A describes the courses that will be used for the Friday evening distance race. Participants will be notified by VHF on Channel 72 on the course to be sailed and a course board will display the course to be sailed. An "R" prior to the course letter indicates it is the reverse course.

10. **Marks**

The marks are described in Attachment A: Courses.

11. **The Start**

The starting line will be between the signal boat and MARBLEHEAD CHANNEL BELL (15- FT RK) RG "FR" Fl (2+1) R 6s.

12. **Recalls**

The race committee will attempt to hail each boat on course side using VHF radio CH 72. The failure to hail, the order of hail, the hail of some but not all, the failure of a boat to hear such a hail or the untimely hail of OCS boats will not be grounds for redress. This changes rule 62.1(a).

13. **The Finish**

- 13.1 Boats shall take their finish time by passing as close as practical to MARBLEHEAD CHANNEL BELL (15-FT RK) RG "FR" Fl (2+1) R 6s. Boats shall submit the finish time in writing to the Protest Secretary at the Eastern Yacht Club by 1800 on Saturday August 25.

14 **Time Limits**

The first boat must finish by 12:00 hrs. on Saturday. Boats that have not finished by 1800 hrs. on Saturday will be scored DNF

15. **Penalty System**

- 15.1 Appendix T will apply.

16. **Protests and Requests for Redress**

- 16.1 Protest forms are available at the host club and shall be delivered to the protest desk, located near the Model Room at the Eastern Yacht Club, within one hour after the last boat finishes or 1800 hrs. on Saturday, whichever is sooner. Notices and hearings will be posted on the official notice board located on Yachtscoring at www.yachtscoring.com. In addition, as a courtesy only, an attempt will be made to post notices at the Eastern Yacht Club on the glass wall of the Sailing Office, in the PC Donald R. Humphreys Yardarm at the Boston Yacht Club, and the notice board located near the trophy room at the Corinthian Yacht Club.
2. Notices will be posted no later than 30 minutes after the protest time limit to inform competitors of hearings in which they are parties or named as witnesses.
 3. On the last scheduled day of racing a request for reopening a hearing shall be delivered:
 - (a) within the protest time limit if the requesting party was informed of the decision on the previous day;
 - (b) no later than 30 minutes after the requesting party was informed of the decision on that day. This changes rule 62.2 and 66.

1.7 Scoring

17.1 Boats racing PHRF will use Time on Time. One race is required to be completed to constitute a regatta.

18. Safety Regulations

18.1 All boats shall have a working VHF radio. All classes will use channel 72.

18.2 In the event of an emergency, or if a boat withdraws, the boat shall notify the race committee at the first reasonable opportunity.

19 Event Advertising

Boats will be required to display the boom stickers on both sides of the boat for the duration of the event. ("DP")

20. Radio Communication

Except in an emergency, while racing, a boat shall neither make nor receive radio communications not available to all boats. This restriction also applies to all electronic devices.

20.1. Competitors are permitted to utilize radio communications amongst themselves while racing. This changes rule 41.

21. Prizes

Prizes may be given at the discretion of the organizing authority.

22. Disclaimer of Liability

Competitors participate in the regatta entirely at their own risk. See rule 4 Decision to Race. The organizing authority will not accept any liability for material damage or personal injury, or death sustained in conjunction with or prior to, during, or after the regatta.

23. MEDIA AND TELEVISION

Competitors give absolute right and permission for any photograph and video footage taken of themselves or the yacht they are sailing during the event, to be published in any media whatsoever, for either editorial or advertising purposes, or to be used in

Attachment A: COURSES

COURSE A – 64nm

From the Start to R “6” Fl R 4s BELL (Farnham Rock) leaving it to Port. Thence to R “2” Fl R 4s WHIS (off Gloucester), leaving it to Port. Thence to G “1” Fl G 4s WHIS (Newcomb Ledge) leaving it to Starboard. Thence to the finish.

Reverse A – 64nm

From the Start to G “1” Fl G 4s WHIS (Newcomb Ledge) leaving it to Port. Thence to R “2” Fl R 4s WHIS (off Gloucester), leaving it to Starboard. Thence to R “6” Fl R 4s BELL (Farnham Rock) leaving it to Starboard. Thence to the finish.

COURSE B – 90nm

From the Start to R “6” Fl R 4s BELL (Farnham Rock) leaving it to Port. Thence to G “1” Fl G 4s BELL (off Wood End), leaving it to Port. Thence to R “2” Fl R 4s BELL (Three and One-Half Fathoms Ledge) leaving it to Starboard. Thence to the finish.

Reverse B – 90nm

From the Start to R “2” Fl R 4s BELL (Three and One-Half Fathoms Ledge) leaving it to Port. Thence to G “1” Fl G 4s BELL (off Wood End), leaving it to Starboard. Thence to R “6” Fl R 4s BELL (Farnham Rock) leaving it to Starboard. Thence to the finish.

COURSE C – 127nm

From the Start to G “1” Fl G 4s BELL (off Wood End), leaving it to Port. Thence to Fl(5) Y 20s Priv (Jeffreys Ledge N 42 48.112 W 070 10.126) leaving it to Port. Thence to G “1” Fl G 4s WHIS (Newcomb Ledge) leaving it to Starboard. Thence to the finish.

Reverse C – 127nm

From the Start to G “1” Fl G 4s WHIS (Newcomb Ledge) leaving it to Port. Thence to Fl(5) Y 20s Priv (Jeffreys Ledge N 42 48.112 W 070 10.126) leaving it to Starboard. Thence to G “1” Fl G 4s BELL (off Wood End), leaving it to Starboard. Thence to the finish



HOST: THE EASTERN YACHT CLUB

Sunday, August 25

ADDENDUM 3

PURSUIT RACE SAILING INSTRUCTIONS

1. Event: The Ted Hood Regatta Pursuit Race will be a pursuit type race in which the slower boats start before the faster boats with each boat starting at an assigned time, depending on their PHRF handicap. The Organizing Authority is the Storm Trysail Club.
The Division is open to Non-Spinnaker boats.
2. Eligibility: Open to PHRF boats with valid PHRF-NE handicap certificates. If you don't have a valid PHRF-NE certificate, a rating can be assigned, based on information provided. The boat's design and type, largest headsail (in percentage of "J"), if the engine is an inboard, and the type of propeller (fixed, folding or feathering) is helpful in determining the most accurate rating.
3. Rules:
 - 3.1. This Event will be governed by the Racing Rules of Sailing and except as altered by these Sailing Instructions. Children under 12 years of age must always wear a PFD.
 - 3.2. PHRF Time on Distance will be used.
 - 3.3. The US Sailing prescription to RRS 63.2 (relating to hearings on redress) will not apply.
 - 3.4 Notices to Competitors: will be posted on the official notice board located on Yachtscoring at www.yachtscoring.com. As a courtesy, notices may also be posted on the glass wall of the sailing office at the Eastern Yacht Club Sailing Center, the PC Donald R. Humphreys Yardarm at the Boston Yacht Club, the hallway near the Trophy Room at the Corinthian Yacht and by email to addresses supplied at registration.
4. Signals Made Ashore: Will be displayed from the Eastern Yacht Club flagstaff.
5. Schedule of Races: There will be one race.
6. Start Times: Shall be assigned with registration. The numerical code flag with a red/green flag indicating the course will be raised with one sound signal 5 minutes before the start time of the first boat. If code flag "T" is also displayed, the course is to be sailed twice around. The RC will attempt to do a countdown for each boat's start to be broadcast on VHF channel 69.
7. Check In Before the Start: A boat shall check in before her first start of each day and shall advise the race committee of the number of souls on board. Check in by radio is not allowed. Boats withdrawing from the race shall notify the Race Committee as soon as possible. The Race Committee will monitor VHF channel 69 throughout the race.
8. Warning Signal: The first warning signal will be no earlier than 1145 hrs.



Ted Hood Regatta™ • Marblehead 2019

10. The Start: Will be near the mouth of Marblehead Harbor. The starting line will be between an orange flag on the RC Signal Boat and a green tetrahedron mark.
11. The Course: Course details and Mark information are provided in the Addendum to these Sailing Instructions found on the event page at www.yachtscoring.com. When code fag "T" is also displayed the course is to be sailed twice around.
 - 11.1. Marks will be Mass Bay Standard Marks List A.
 - 11.2. Mass Bay Rounding Mark restricted areas will apply.
12. The Finish: Will be in the same area as the Starting Line and be between the RC signal boat and a green tetrahedron mark
13. Recalls and Communication: The Race Committee will use VHF channel 69.
14. Time Limit: The time limit for the first to finish is 1500 hours on Sunday August 26.
15. Scoring: Boats will be scored in their order of finish.
16. Prizes: Trophies will be presented for the first through third place. Presentations will be made at the Eastern Yacht Club during the after-race party.
17. MEDIA AND TELEVISION
Competitors give absolute right and permission for any photograph and video footage taken of themselves or the yacht they are sailing during the event, to be published in any media whatsoever, for either editorial or advertising purposes, or to be used in press information.
18. Boats will be required to display the bow stickers on both sides of the boat for the duration of the event. ("DP")



Ted Hood Regatta™ • Marblehead 2019

DESCRIPTION of COURSE 2, 5, & 7

COURSE #2

The starting line shall be as described in these Event Sailing Instructions. Mark 1 of the course shall be an orange tetrahedron located 1.0 nautical miles from the start. It shall be left to port at the rounding. The finish shall be at the location of 'the start', resulting in a total course length of 2.0 nautical miles.

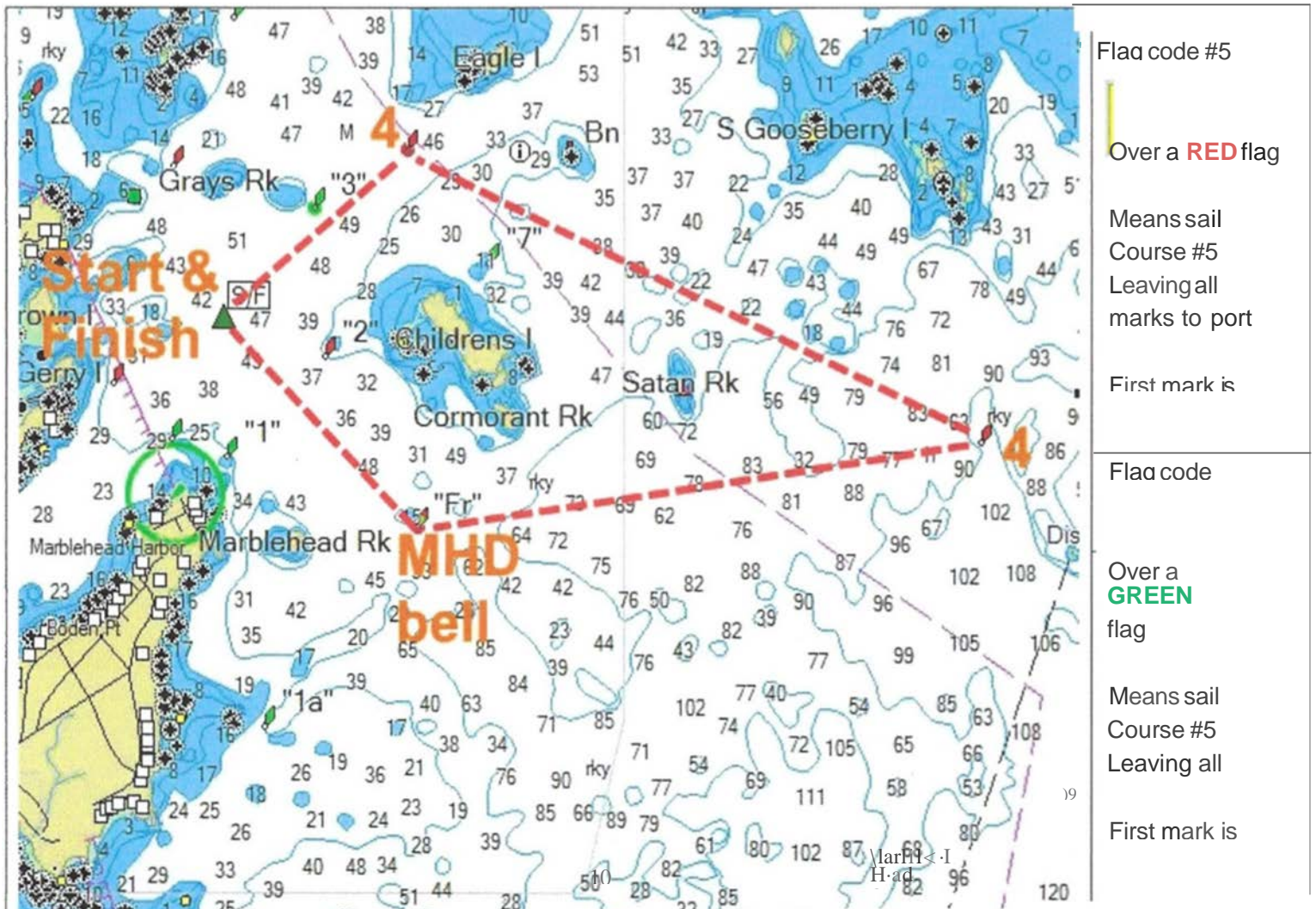
The magnetic bearing to Mark 1 will be posted on the Signal Boat.

This course will be signaled by use of a numerical code #2 flag

COURSE #5

Course #5 is approximately 5 nautical miles long and will be sailed leaving all marks to either port or starboard.

Flags will indicate which direction as shown below the course chart. Start & finish will be between the Signal boat's orange (start) or blue (finish) flag & a green tetrahedron.





Ted Hood Regatta™ • Marblehead 2019

COURSE #7

Course #7 is approximately 7 nautical miles long and will be sailed leaving all marks to either port or starboard.

Flags will indicate which direction as shown below the course chart. Start & finish will be between the Signal boat's orange (start) or blue (finish) flag & a green tetrahedron .

