



# NEW YORK YACHT CLUB 157<sup>th</sup> ANNUAL CRUISE

August 16-24, 2013

## SAILING INSTRUCTIONS

### 1 RULES

- 1.1 The Annual Cruise will be governed by the rules as defined in *The Racing Rules of Sailing*.
- 1.2 The 2013 IRC Rules and Regulations shall apply to yachts racing under IRC and IRC non-spinnaker. Additional restrictions may apply to IRC non-spinnaker yachts as stated in the Notice of Race.
- 1.3 Special conditions apply for the Queen's Cup. See **Notice of Race Addendum 1 – Conditions for the Queen's Cup** (also attached to these sailing instructions).
- 1.4 The 2013 NYYC Cruising Rule (NYYC CR) and any subsequent amendments shall apply to yachts racing under NYYC CR. Additional restrictions may apply to NYYC CR yachts as stated in the Notice of Race.
- 1.5 If there is a designated Classics division, they will be scored using the CRF rating system. The rules in **Notice of Race Addendum 2 – NYYC Classics Rules** shall apply.
- 1.6 The 2012-2013 ISAF Offshore Special Regulations, Category 4, shall apply, except as noted in NOR 1.7 and 1.9.

### 2 REGISTRATION, ANNOUNCEMENTS AND CHANGES TO SAILING INSTRUCTIONS

- 2.1 **Registration** – Yachts will rendezvous at Journey's End Marina in Rockland, ME. Registration will be open from 1400-1800 on Friday, August 16. Cruise Books, class assignments, scratch sheets and social tickets will be distributed at registration. Yachts joining the Cruise after Friday, August 16, shall register with the Race Committee aboard the signal boat *Georgiana*.
- 2.2 **Captains' Meeting** - A Captains' meeting will be held at 1800 on Friday, August 16, in the shed at Journey's End Marina. Attendance is limited to the captain or designee, plus one crewmember.
- 2.3 **Daily Announcements** - All yachts shall monitor the Race Committee's daily announcements at 0800 on VHF channel 72, except an alternate channel may be used and the fleet will be so informed. The announcements will include the rendezvous location, the intended order of start for that day's racing, and any other Cruise announcements. The Race Committee Signal Boat will continue to monitor and communicate on VHF channel 72.
- 2.4 **Changes to the Sailing Instructions** - In accordance with rule 90.2(c), any change to the sailing instructions will be announced each day during the daily announcements. The Committee may also attempt to distribute written copies prior to the races they will affect; however, failure to distribute the written copy will not be grounds for redress. This changes rule 62.1(a).

### 3 SIGNALS MADE AFLOAT, POSTPONEMENT AND SHORTENED COURSE

- 3.1 If conditions do not permit a start on schedule for any Squadron Run, the Race Committee may postpone, fly flag "L" (follow me) and proceed up the course in the direction of the next destination, or to the first mark of one of the designated courses for that Squadron Run, or to another location as broadcast on the fleet VHF channel.
- 3.2 The Race Committee may shorten a Squadron Run before the start by following the procedure in SI 3.1. When a course is shortened to start at either a mark of the course or by setting a special NYYC inflatable

mark for a new starting mark, only those marks listed in the course posted that are subsequent to the new start mark need to be observed.

- 3.3 Any course may be shortened prior to the designated finish mark in accordance with rule 32.2.
- 3.4 The failure of the Race Committee to make any announcement on the VHF fleet channel or for a yacht to hear any announcement made shall not be grounds for redress. This changes rule 62.1(a).

#### 4 CLASSES AND IDENTIFICATION

- 4.1 Yachts shall race in assigned classes. Yachts shall display the numeral pennant corresponding to their class assignments from the backstay approximately six feet above the deck. The pennant shall be displayed prior to the warning signal of the first class to start until a yacht has finished or retired.
- 4.2 A yacht entered in IRC may alternate between spinnaker and non-spinnaker classes by written application to and permission of the Race Committee prior to 2100 on the day before such change will take effect. Transfers in class will remain in effect until another change is requested and granted as above.
- 4.3 Class assignments will be distributed at Registration. Any changes in accordance with SI 4.2 will be announced in the 0800 daily announcements.

#### 5 SCHEDULE OF RACES

- 5.1 Details for each day of racing can be found in **Appendix 1 – Daily Schedule & Courses**.

- 5.2 Races are scheduled as follows:

<u>Day</u>	<u>Date</u>	<u>Time/Event</u>	<u>Event location</u>
Fri	Aug 16	1400-1800 - Registration 1800 - Captains' Meeting 1830 - Opening Reception	Journey's End Marina Journey's End Marina Journey's End Marina
Sat	Aug 17	Queen's Cup Race Day Non-spinnaker classes Queen's Cup and other spinnaker classes	Rockland – Seal Bay/Winter Hbr Penobscot Bay
Sun	Aug 18	Squadron Run #1 Racing for the Commodore's Trophies	Seal Bay/Winter Hbr – Burnt Coat Hbr
Mon	Aug 19	Squadron Run #2 Racing for the Vice Commodore's Trophies Flag Officers' Cocktail Party & BBQ	Burnt Coat Hbr – Somes Sound John M. Williams Boatyard
Tue	Aug 20	<b>Parade</b> Squadron Run #3 Racing for the Rear Commodore's Trophies	Somes Sound – Bar Harbor
Wed	Aug 21	0800 - Lay day in Bar Harbor – Dress Ship	Bar Harbor
Thu	Aug 22	<b>Parade</b> Squadron Run #4 Racing for the NYYC Race Committee Trophies 1800 - Annual Cruise Final Social Event	Bar Harbor – Herrick Bay Atlantic Boat Company
Fri	Aug 23	Squadron Run #5 Racing for the U.S. Navy Challenge Cups	Herrick Bay – Orcutt/Bucks Hbr
Sat	Aug 24	Astor Cup Race Day	Orcutt/Bucks Hbr to Rockland

- 5.3 If conditions do not allow the race for the Queen's, Una and Corsair Cups to be held as scheduled, the alternate day for the Queen's Cup Day races will be Saturday, August 24. Should this be necessary, the Astor Cup Day races scheduled for Saturday, August 24, would then be cancelled.

#### 6 COURSES

- 6.1 Drop mark courses, as described in SI 7, *will* be used on Saturday, August 17, for the Queen's Cup and *may* be used for other spinnaker classes on that day.
- 6.2 All other courses will be as described in SI 9 and **Appendix 1 – Daily Schedule & Courses**.

## 7 COURSES FOR DROP MARK RACES

7.1 The flag(s) designating the course to be sailed will be flown at the time of Course Signals described in Appendix 1. Subsequent classes will sail the same course unless a new course is displayed at their warning signal. If a new course is displayed, the Race Committee will endeavor to announce the course on the fleet VHF channel.

**Note:** On course "W", each class may sail a different number of legs on the same course.

7.2 **Course "W"** is a Windward/Leeward course with a windward offset mark. A numeral pennant indicating the number of **LEGS** to be raced will be flown beneath flag "W". The distance between the windward mark and the offset mark shall not count as a leg.

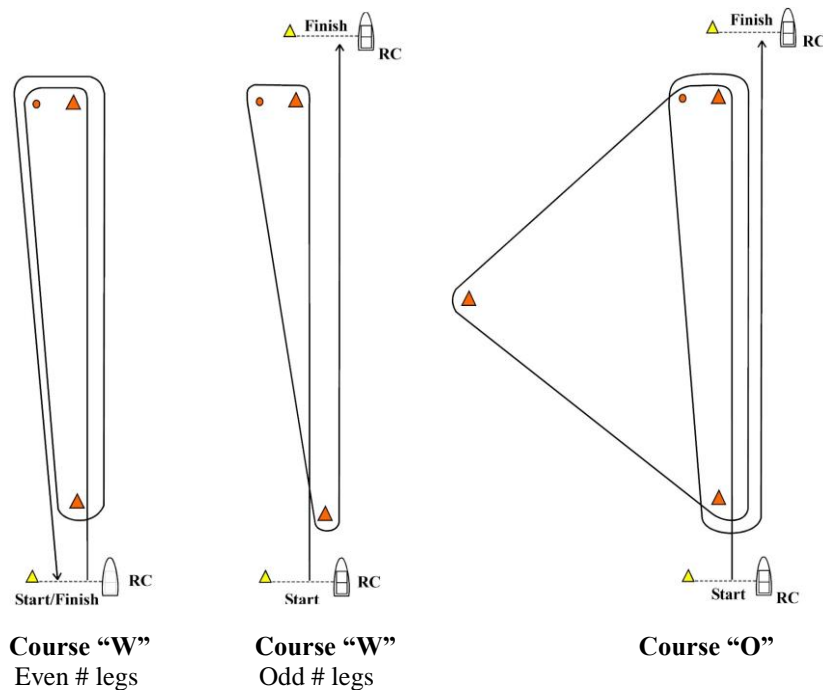
7.3 **Course "O"** is a Triangle/Windward/Leeward/Windward course with a windward offset mark.

7.4 The leeward mark will be set approximately 0.1 NM to windward of the starting line.

7.5 The course designation, bearing and distance to the first mark will be signaled using numeral pennants displayed on poles. The course designation will be flown forward, followed by the three pennants designating the magnetic bearing to the first mark, followed by the two pennants designating distance (nautical miles and tenths) to the first mark.

7.6 Marks, including the windward offset mark, shall be rounded in order and left to port.

7.7 Course diagrams:



## 8 MARKS FOR COURSES "W" and "O"

8.1 The windward, leeward and reaching (if used) marks will be 8' ORANGE tetrahedron buoys.

8.2 The offset mark will be a small round ORANGE buoy.

8.3 Change marks will be 8' YELLOW tetrahedron buoys. A subsequent change will revert to the original mark.

8.4 The starting and finishing marks will be 5' YELLOW tetrahedron buoys.

## 9 COURSES AND MARKS FOR SQUADRON RUNS and NON-DROP MARK RACES

9.1 The courses for Squadron Runs are described in **Appendix 1 – Daily Schedule & Courses**.

9.2 The flag(s) designating the course to be sailed, including flags describing Special Mark "U", if used, will be flown at the time of Course Signals described in Appendix 1. Subsequent classes will sail the same course

unless a new course is displayed at their warning signal. If a new course is displayed, the Race Committee will endeavor to announce the course on the fleet VHF channel.

### 9.3 Special Mark “U”

- a) The Race Committee may add a new first mark to any course by displaying flag “U” above a green or red flag on a separate pole.
- b) Mark “U” is to be rounded either to STARBOARD (green flag below “U”), or to PORT (red flag below “U”), prior to sailing the course as described in **Appendix 1 – Daily Schedule & Courses**.
- c) The bearing and distance to Mark “U” will be signaled using numeral pennants displayed on poles. The course designation will be flown forward, followed by flag “U” above a green or red flag, followed by three pennants designating the magnetic bearing to mark “U”, followed by the two pennants designating distance (nautical miles and tenths) to mark “U”.
- d) Mark “U” will be an 8’ ORANGE tetrahedron buoy.

9.4 The starting mark will be a 5’ YELLOW tetrahedron buoy.

9.5 The finishing mark will be a government mark as described in Appendix 1.

## 10 THE START

10.1 Races will be started using rule 26.

10.2 The warning signal for each succeeding class may be made with the starting signal of the preceding class.

10.3 The starting line will be between a staff displaying an orange flag on the Race Committee Signal Boat and the course side of the starting mark.

10.4 Yachts whose warning signal has not been made shall keep clear of the starting area.

10.5 A yacht starting later than 15 minutes after her starting signal shall be scored Did Not Start. This changes rule A4.

10.6 Special conditions apply to the start of the Queen’s Cup. See NOR Addendum 1 – Conditions for the Queen’s Cup (also attached to these sailing instructions).

## 11 INDIVIDUAL RECALLS

In addition to the requirements in rule 29.1, the Race Committee will endeavor to hail each premature starter over the fleet VHF channel. This changes rule 29.1. Failure to make such an announcement shall not be grounds for redress. This changes rule 62.1(a).

## 12 RETIRING FROM A RACE

Yachts retiring from a race are requested to notify the Race Committee on the fleet VHF channel. If unable to reach the Race Committee by VHF radio, a yacht shall try to contact the Race Committee via cell phone at (508) 965-3454 (Spyder Fortier) or (914) 954-6661 (Tinker Myles). If still unable to reach the Race Committee by either method above, a yacht shall report to the Race Committee in that evening’s harbor.

## 13 GOVERNMENT BUOYS

All government buoys mentioned in these instructions are subject to changes as listed in the “U.S.C.G. Local Notice to Mariners.” Positions of buoys or lights given in these sailing instructions are for information only. Each yacht is responsible for its navigation.

## 14 THE FINISH

14.1 The finishing line for Courses “W” and “O” will be between a staff displaying an orange flag on a Race Committee Boat and the course side of the finishing mark.

- a) For course “W”, with an odd number of legs, and course “O”, the finish line will be located approximately 0.1 NM to windward of the windward mark.
- b) For course “W”, with an even number of legs, the finish line will be located approximately 0.1 NM to leeward of the leeward mark.

- 14.2 For courses “W” and “O”, yachts approaching a windward finish line may ignore the windward mark. Yachts approaching a downwind finish line may ignore the leeward mark.
- 14.3 The finish for all Squadron Runs will be between a staff displaying an orange flag on a Race Committee Boat displaying a blue on-station flag and the course side of the designated finishing mark.
- 14.4 The Race Committee Boat at the finish may or may not be the same boat that started the race.
- 14.5 **No RC on Station** - In the event that there is no Race Committee Boat on station at the finishing line, a yacht shall finish and take her own time in accordance with the US SAILING prescription to rule 34 changed to read “a boat shall finish within 100 yards of the remaining mark on a line extending from its required side at a 90° angle to the last leg”, and report her finishing time and finishing position in relation to any nearby boats and report them to the Race Committee as soon as reasonably possible, but no later than 2000.
- 14.6 After sunset, the Race Committee Boat will display the club night signal (Green over Red over Green).
- 14.7 If there is fog at the finish, the Finish Line Committee Boat may ring a bell rapidly, for approximately five seconds, at intervals.

## **15 PENALTY SYSTEM**

- 15.1 The Scoring Penalty, rule 44.3 will apply. The penalty will be two places.
- 15.2 A yacht that has taken a penalty shall complete a penalty acknowledgement form (copy provided in Cruise packet) and file it with the Race Committee not later than 2000 on the day of the incident.

## **16 TIME LIMIT**

- 16.1 There is no time limit for the Queen’s Cup.
- 16.2 The time limit for all other drop mark races is four hours. Yachts not finishing within 60 minutes of the first yacht in their class that sails the course and finishes, or within the time limit, whichever is later, will be recorded as “Did Not Finish” (DNF) and scored as described in SI 18.2.
- 16.3 The time limit for the Squadron Runs is 1600. The time limit for the non-drop mark races on Saturday, August 17, is 1800. The time limit for non-drop mark races on Saturday, August 24, is 1600. Any yacht not finishing within the time limit will be recorded as “Did Not Finish” (DNF) and scored as described in SI 18.2.

## **17 PROTESTS AND REQUESTS FOR REDRESS**

- 17.1 Protest forms are provided in the Cruise packet and are available from the Race Committee.
- 17.2 Protests must be delivered to the Race Committee by 2000 on the day of the incident. Protest hearings will be held at the time and place announced by the Race Committee.
- 17.3 Breaches of SIs 4.1 and 10.4 will not be grounds for a protest by a yacht. This changes rule 60.1(a).
- 17.4 The protest committee may impose suitable penalties, other than disqualification, for breaches of any non-Part 2 rule. This changes rule 64.1(a).
- 17.5 Attention is specifically drawn to the requirements for protesting in rule 61.1(a).

## **18 SCORING**

- 18.1 Appendix A, Low Point System, will be used, except that any yacht which properly starts a race shall receive a score no worse than one point more than the number of starters in her class. This changes rule A4.2.
- 18.2 Yachts that start, but fail to finish within the time limit for any reason, shall, without a hearing, be scored by the Race Committee with points equal to the number of yachts in her class that have sailed the course and finished within the time limit, plus two. This changes rules A4.1, A4.2 and A5.
- 18.3 Five Squadron Runs are scheduled. A yacht’s series score will be the total of all her race scores. There is no discard. One race is required to be completed to constitute a series.
- 18.4 Races run on Saturday, August 17, and Saturday, August 24, will be scored separately.

## 19 PRIZES

19.1 Prizes will be awarded on Queen's Cup Race Day and Astor Cup Race Day to the first place yacht in each class with two or more yachts starting in the class.

19.2 Points will be awarded to yachts placing second or third on Queen's Cup Race Day and Astor Cup Race Day, or first, second or third on the Squadron Runs as follows:

First place	4 points
Second place	2 points
Third place	1 point

Each yacht accumulating points during the Cruise will be awarded a Points Trophy reflecting their finishes and commensurate with the total points accumulated.

19.3 Cups and trophies for the Annual Cruise are described separately. All prizes, cups and trophies will be awarded at the Annual Awards Dinner in New York on Thursday, November 14, 2013, to which all members and their guests are invited.

19.4 The QUEEN'S, UNA, CORSAIR and DICKERSON CUPS may be awarded to the yachts in the respective events having the lowest corrected times on Queen's Cup Race Day.

19.5 The ASTOR CUP will be awarded to the IRC Spinnaker Racing Class yacht having the lowest corrected time in the Astor Cup race.

19.6 The CYGNET CUP may be awarded to the enrolled yacht, which in the opinion of the Race Committee makes an outstanding performance during the Cruise, including the Squadron Runs and Cup Races.

19.7 The CRUISING RULE CUP may be awarded at the discretion of the Flag Officers to a yacht in the New York Yacht Club Cruising Rule division, owned and sailed by a NYYC member, which best exemplifies the traditions of yachting by her upkeep and appearance and performs admirably on the Cruise.

19.8 The EDWARD WELCH CLUCAS MEMORIAL TROPHY will be awarded to the yacht having the fastest elapsed time on the longest run of the Cruise.

19.9 The following Cups and Trophies may be awarded to the yachts with the best cumulative scores in their class for the Squadron Runs:

- |                                     |                                    |
|-------------------------------------|------------------------------------|
| a) Royal Yacht Squadron Cup         | g) Royal Bermuda Yacht Club Trophy |
| b) H. Irving Pratt Memorial Trophy  | h) Royal Perth Yacht Club Trophy   |
| c) Cumberland Cup                   | i) Titania Cup                     |
| d) Royal Sydney Yacht Squadron Bowl | j) Venona Cup 1912                 |
| e) Navy Members Cup                 | k) Commodore's Cup                 |
| f) Venona Cup 1913                  | l) Reliance Cup                    |

## NOTES RELATED TO THE SAILING INSTRUCTIONS

- All times herein are Eastern Daylight Time. Bearings are in degrees magnetic and are approximate. Distances are expressed in nautical miles and are approximate. All latitudes and longitudes for mark positions are approximate.
- All course lengths may vary depending on the actual location of the start/finish line and whether the RC sets a mark "U". Distances given are rough guides only.
- In the event that life saving equipment is lost overboard, it should be retrieved. If recovery is impossible, loss of any equipment that floats shall be reported immediately to the Race Committee and to the nearest U.S. Coast Guard station on VHF channel 16.
- Participants are reminded that many regions of our sailing area have an abundance of lobster pots. All care should be taken to avoid snagging or cutting a pot, as this is a particularly sensitive area for the New York Yacht Club Annual Cruise. It is important that we maintain a respectful relationship with the local watermen.

- After racing each day, the Race Committee boat will display Flag “R” when results are available and can be picked up. Please do not approach the Race Committee prior to that time except to file a protest or report a Scoring Penalty.
- The Race Committee will also attempt to post the results on the Annual Cruise website and will display Flag “G” when they are posted. Results of daily racing may be delayed due to availability of an Internet connection, in which case, they will be posted at the first available opportunity.
- The Race Committee will endeavor to distribute hard copies of the results on evenings when there is not a social function and make them available at the social functions.

### **Race Committee**

John L. Myles, Jr., Principal Race Officer

Ingrid Flynn

Thomas K. Flynn

Roger W. Fortier, Jr.

Richard R. Gumpert

Timothy M. James

Dorothy B. Myles

# APPENDIX 1 – DAILY SCHEDULE & COURSES

**Saturday, August 17**

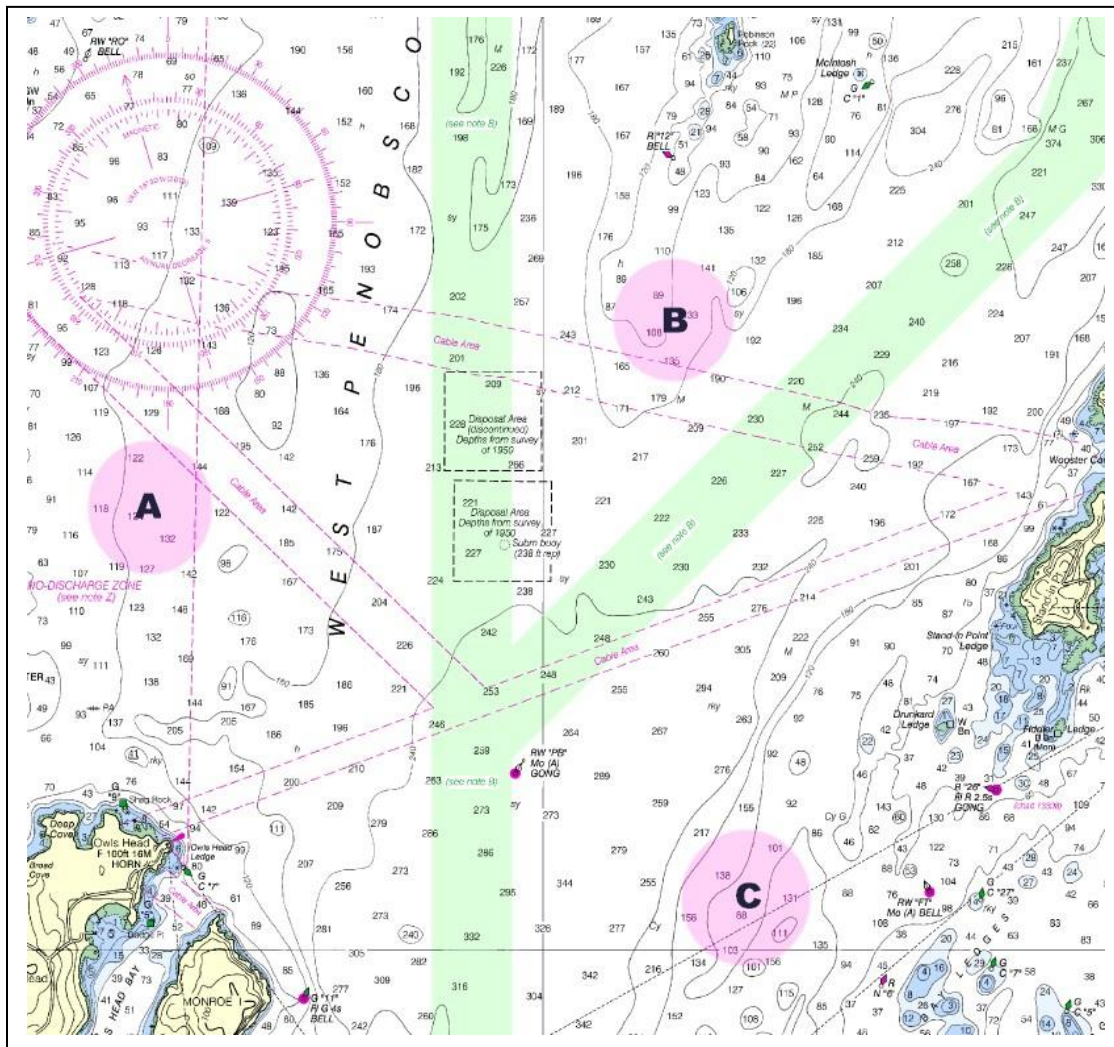
**Rockland to Seal Bay/Winter Harbor**

**QUEEN’S CUP RACE DAY** including racing for the **UNA, CORSAIR and DICKERSON CUPS**

The 0800 daily announcements will confirm the rendezvous location (area A, B or C as described below) or direct the fleet to an alternate location, and will include the intended order of start.

## RENDEZVOUS AREAS

- A in the vicinity of 1.0 NM N of Owls Head Light
- B in the vicinity of 0.5 NM S of R”12” Bell
- C in the vicinity of 0.5 NM W of RW “FT” Mo(A) Bell at the entrance of Fox Island Thorofare





## QUEEN'S CUP RACE DAY (cont.)

### SCHEDULE

- 0800 Announcements on VHF Channel 72
- 0900 Harbor Start
- 1055 Course Signals for the spinnaker classes
- 1100 Warning Signal for the first IRC spinnaker class to start
- 1155 Course Signals for the non-spinnaker classes
- 1200 Warning Signal for the first non-spinnaker class to start

### IRC SPINNAKER CLASSES

Course "W" or "O" per SI 7

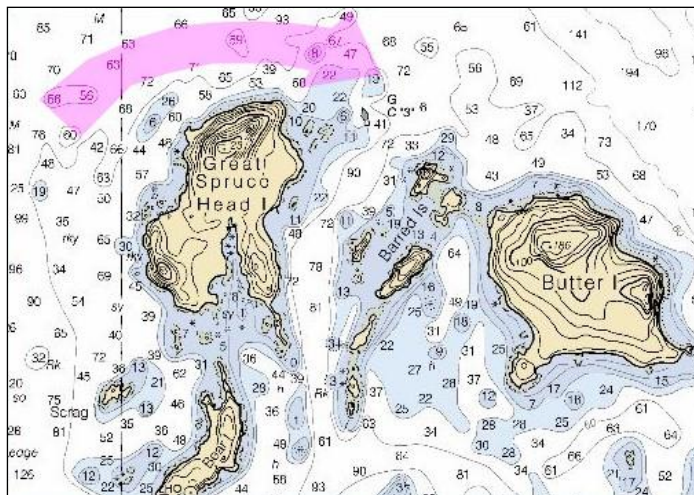
### NON-SPINNAKER CLASSES

#### Course 1 – approx. 13 NM

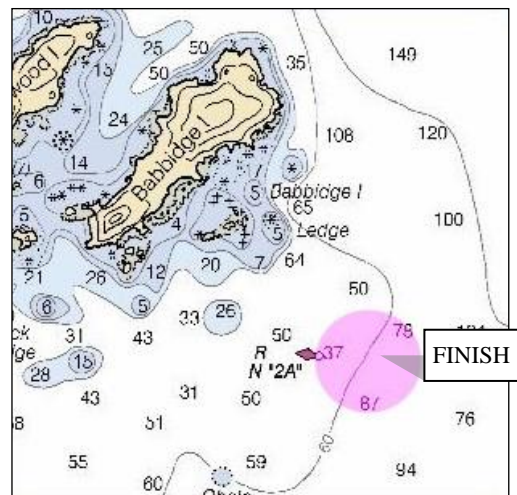
- Start
- Special Mark "U" if used (see SI 9.4)
- Leave North Haven Island to starboard
- Finish at R N "2A" southeast of Babbidge Island to starboard (44° 07.915' N; 068° 46.686' W)

#### Course 2 – approx. 19 NM

- Start
- Special Mark "U" if used (see SI 9.4)
- Leave Great Spruce Head Island to starboard (44° 14.588' N; 068° 49.139' W)
- Finish at R N "2A" southeast of Babbidge Island to starboard (44° 07.915' N; 068° 46.686' W)



Course 2 – leave Great Spruce Head Island to starboard



Non-spinnaker classes finish leaving R N "2A" to starboard

**Sunday, August 18**

***Seal Bay/Winter Harbor to Burnt Coat Harbor***

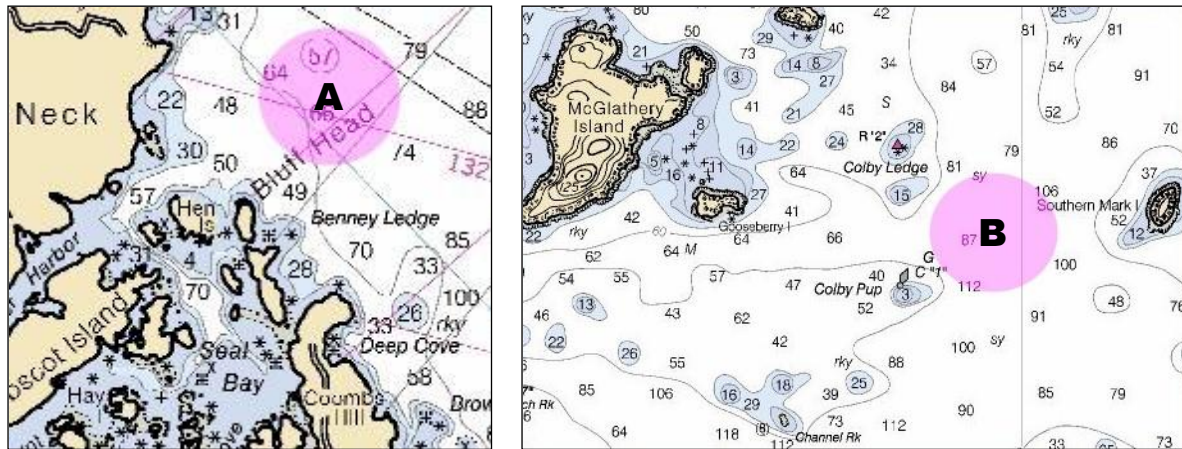
**SQUADRON RUN #1 for the COMMODORE'S TROPHIES**

The 0800 daily announcements will confirm the rendezvous location (area A or B as described below). If the squadron goes to rendezvous area B, the Race Committee will announce a revised time for the course signals and first warning signal.

**RENDEZVOUS AREA**

A in the vicinity of 0.5 NM northeast of Bluff Head (just outside Seal Bay/Winter Harbor)

B in Jericho Bay in the vicinity of C "1" Colby Pup (just through Merchant Row)



**SCHEDULE**

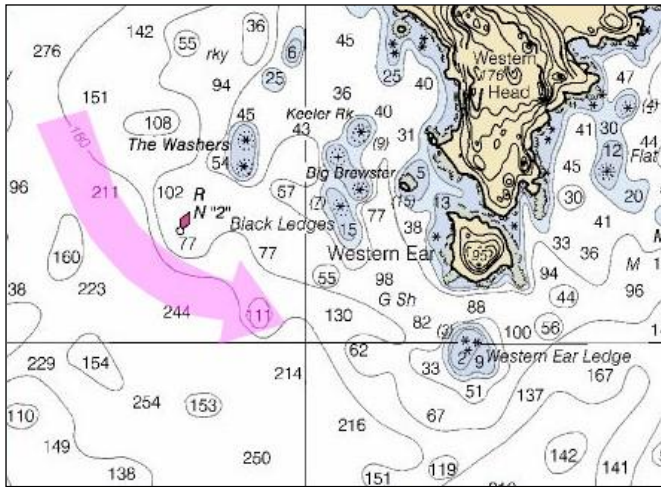
- 0800 Announcements on VHF Channel 72
- 0830 Harbor Start
- 0955 Course signals and Special Mark "U" details (if used)
- 1000 Warning Signal for the first class to start (**EARLY start time**)

**COURSES (from Rendezvous Area "A")**

**Course 1 – approx. 21 NM**

- Start
- Special Mark "U" if used (see SI 9.4)
- R N "2" off The Washers (southwest tip of Isle au Haut) to port (44° 00.327' N, 068° 40.508' W )
- Finish at G C "3" Gooseberry Island Ledge to port (44° 07.771' N, 068° 27.266' W )

## SQUADRON RUN #1 for the COMMODORE'S TROPHIES (cont.)



Course 1 - R N "2" The Washers southwest of Isle au Haut to port



Finish for all courses at G C "3" at mouth of Burnt Coat to port

### COURSES (from Rendezvous Area "B" in Jericho Bay)

Transit through Merchant Row – approx. 9.5 NM

#### Course 2 – approx. 8.5 NM

- Start
- Special Mark "U" if used (see SI 9.4)
- Leave Drunkard Ledge to port
- Finish at G C "3" Gooseberry Island Ledge to port

(44° 04.584' N, 068° 32.693' W)

(44° 07.771' N, 068° 27.266' W)

#### Course 3 – approx. 11 NM

- Start
- Special Mark "U" if used (see SI 9.4)
- Leave Egg Rock to starboard
- N "4" off Hat I Ledge to port
- Finish at G C "3" Gooseberry Island Ledge to port

(44° 11.110' N, 068° 30.539' W)

(44° 08.389' N, 068° 30.882' W)

(44° 07.771' N, 068° 27.266' W)

#### Course 4 – approx. 12.5 NM

- Start
- Special Mark "U" if used (see SI 9.4)
- Leave Great Spoon I to port
- Finish at G C "3" Gooseberry Island Ledge to port

(44° 02.299' N, 068° 33.331' W)

(44° 07.771' N, 068° 27.266' W)

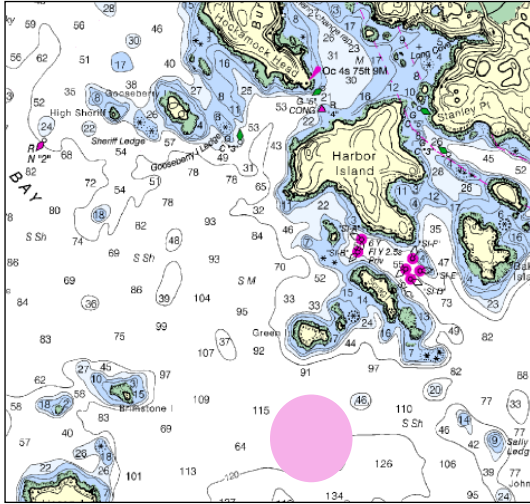
**Monday, August 19**

***Burnt Coat Harbor to Somes Sound***

**SQUADRON RUN #2 for the VICE COMMODORE'S TROPHIES**

**RENDEZVOUS AREA**

Rendezvous in the vicinity of 0.5 NM south of Green Island



**SCHEDULE**

- 0800 Announcements on VHF Channel 72
- 0900 Harbor start
- 0955 Attention signal and Special Mark "U" details (if used)
- 1000 Warning Signal for the first class to start (**EARLY start time**)

**COURSES**

**Course 1 - approx. 9 NM**

- Start
- Special Mark "U" if used (see SI 9.4)
- Finish at G "1" Fl G 4s GONG to port (southeast of Long Ledge) *(44° 13.259' N, 068° 17.819' W)*

**Course 2 - approx. 11.5 NM**

- Start
- Special Mark "U" if used (see SI 9.4)
- Finish at R "8" Fl R 4s GONG to starboard (Spurling Point Buoy) *(44° 15.776' N, 068° 16.797' W)*

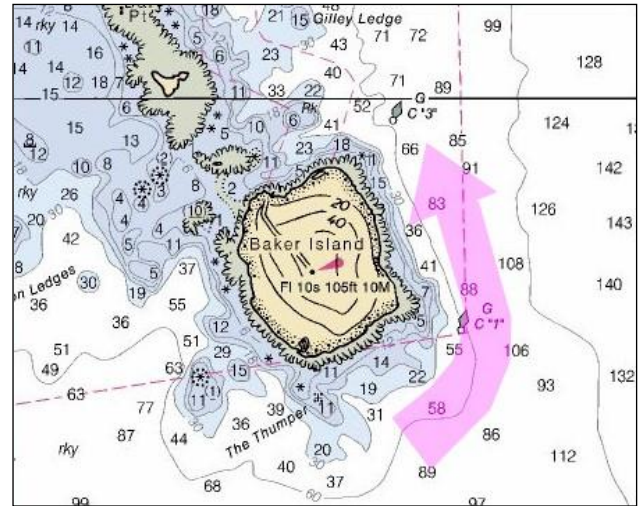
**Course 3 - approx. 18 NM**

- Start
- Special Mark "U" if used (see SI 9.4)
- Leave Baker Island to port *(44° 14.345' N, 068° 11.388' W)*
- Finish at R "10" Fl R 4s BELL to starboard (south of Bear I outside NE Harbor) *(44° 16.872' N, 068° 16.164' W)*

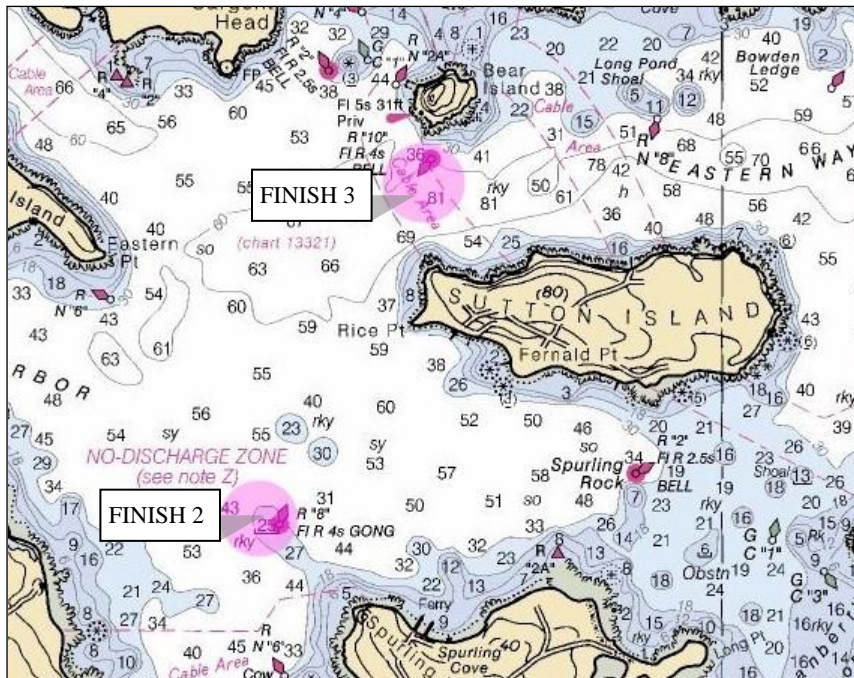
**SQUADRON RUN #2 for the VICE COMMODORE'S TROPHIES (cont.)**



Course 1 finish at G "1" southeast of Long Ledge



Course 3 leave Baker Island to port



Course 2 finish at R "8" Spurling Point and Course 3 finish at R "10" south of Bear Island

**Tuesday, August 20**

***Somes Sound to Bar Harbor***

**SQUADRON RUN #3 for the REAR COMMODORE'S TROPHIES**

**RENDEZVOUS AREA**

Rendezvous in front of Jock Williams Boat Yard prior to 0900 for the PARADE

Rendezvous in the vicinity of 0.2 NM south of G "5" Fl G 2.5s at the mouth of Somes Sound

**SCHEDULE**

0800 Announcements on VHF Channel 72

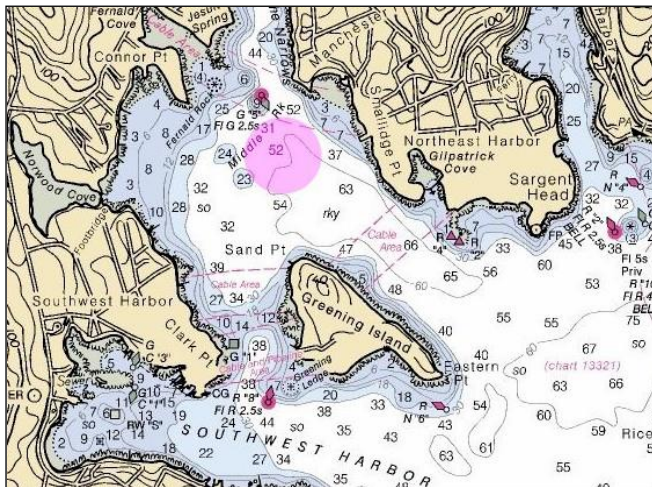
0900 Harbor Start / PARADE

1025 Attention signal and Special Mark "U" details (if used)

1030 Warning Signal for the first class to start

**Course 1 - approx. 11 NM**

- Start
- Special Mark "U" if used (see SI 9.4)
- Finish at Bald Porcupine I Breakwater Light to starboard (Q 20ft 3M) (44° 22.965' N, 068° 11.565' W)



*Rendezvous area south of G "5"*



*Finish at Bald Porcupine Island Light*

**Wednesday, August 21**

***Bar Harbor***

**LAY DAY**

0800 Announcements on VHF Channel 72 (or alternate VHF channel as instructed)

0800 Dress Ship until sunset

**Thursday, August 22**

***Bar Harbor to Herrick Bay***

**SQUADRON RUN #4 for the NYYC RACE COMMITTEE TROPHIES**

**RENDEZVOUS AREA**

Rendezvous in the vicinity of G “7” BELL Sheep Porcupine I (north of General Anchorage A and south of General Anchorage B) prior to 0900 for the PARADE (44° 24.083’ N, 068° 11.408’ W)

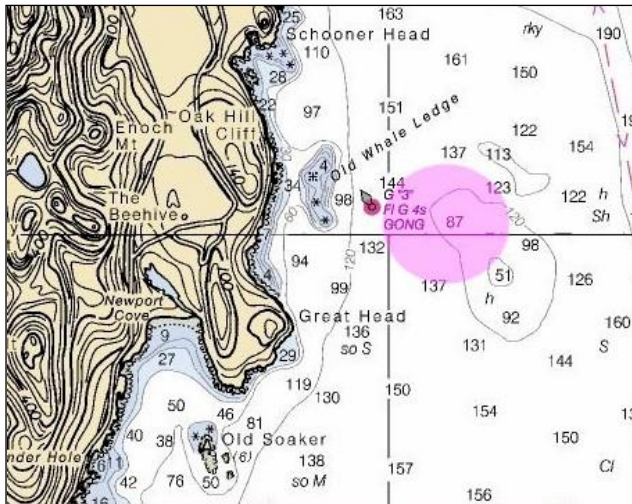
Rendezvous in the vicinity of G “3” Fl G 4s GONG southeast of Schooner Head (44° 20.080’ N, 068° 10.061’ W)

**SCHEDULE**

- 0800 Announcements on VHF Channel 72 (or alternate VHF channel as instructed)
- 0900 Harbor Start / PARADE
- 1025 Attention signal and Special Mark “U” details (if used)  
(the Race Committee will revert to VHF Channel 72 if an alternate channel has been used)
- 1030 Warning Signal for the first class to start

**Course 1 - approx. 16.2 NM**

- Start
- Special Mark “U” if used (see SI 9.4)
- Leave Baker Island to starboard (44° 14.345’ N, 068° 11.388’ W)
- Leave Placentia Island to starboard (44° 10.784’ N, 068° 22.203’ W)
- Finish at G C “1” Pond Island Passage Buoy to port (44° 14.336’ N, 068° 28.732’ W)



*Rendezvous area in the vicinity of G “3”*



*Finish at G C “1” north of Pond Island*

**Friday, August 23**

**Herrick Bay to Orcutt/Buck Harbors**

**SQUADRON RUN #5 for the U.S. NAVY CHALLENGE CUPS**

**RENDEZVOUS AREA**

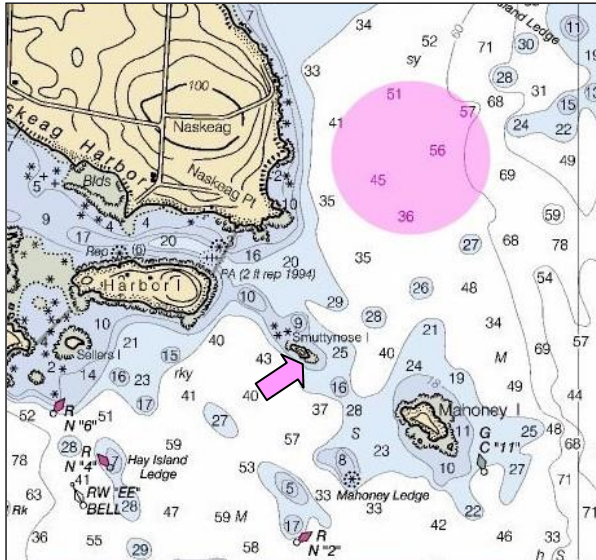
Rendezvous in the vicinity 0.8 NM southwest of Blue Hill Bay Light *approx. (44° 14.400' N, 068° 30.600' W)*  
at the mouth of Herrick Bay

**SCHEDULE**

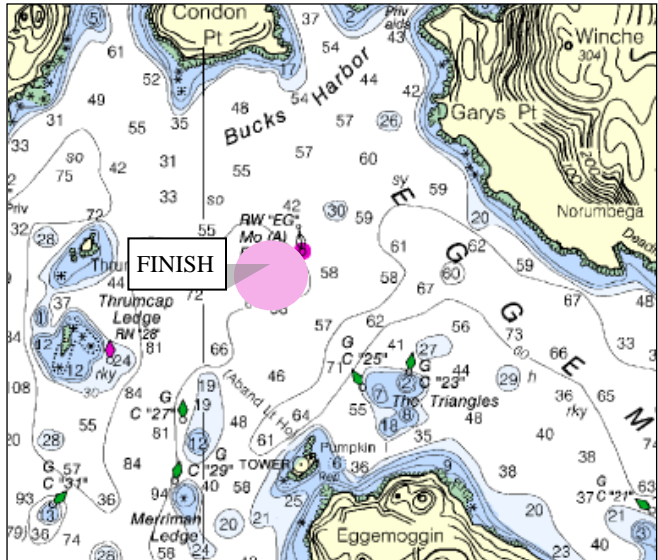
- 0800 Announcements on VHF Channel 72
- 0900 Harbor Start
- 1025 Attention signal and Special Mark “U” details (if used)
- 1030 Warning Signal for the first class to start

**Course 1 - approx. 12.6 NM (NOTE: bridge clearance is 85’ at MHW)**

- Start
- Special Mark “U” if used (see SI 9.4)
- Leave Smuttynose I to starboard *(44° 13.231' N, 068° 31.209' W)*
- Finish at RW “EG” Mo (A) BELL to starboard *(44° 19.216' N, 068° 44.567' W)*



*Rendezvous area at the mouth of Herrick Bay; Smuttynose I*



*Finish at RW “EG” Mo (A) Bell*

**Course 2 - approx. 24 NM**

NOTE: This course may be used for classes that include yachts that will not fit under the Eggeggoggin Reach Bridge (vertical clearance 85’ at MHW)

- Start
- Special Mark “U” if used (see SI 9.4)
- Leave Mark Island (at the western end of Deer I Thorofare) to starboard *(44° 08.059' N, 068° 42.190' W)*
- Finish at RW “EG” Mo (A) BELL to starboard *(44° 19.216' N, 068° 44.567' W)*



**Saturday, August 24**

***Orcutt/Buck Harbors to Rockland***

**ASTOR CUP RACE DAY**

**RENDEZVOUS AREA**

Rendezvous in the vicinity of RW “EG” Mo (A) BELL

(44° 19.216' N, 068° 44.567' W)

**SCHEDULE**

0800 Announcements on VHF Channel 72

0900 Harbor Start

0955 Course Signals

1000 Warning Signal for the first class to start (**EARLY start time**)

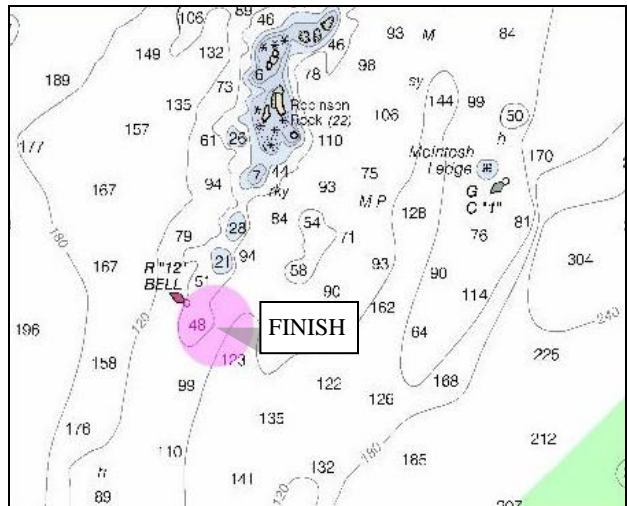
**Course 1 – approx. 14.6 NM**

- Start
- Special Mark “U” if used (see SI 9.4)
- Finish at R “12” BELL south of Robinson Rock to starboard

(44° 09.000' N, 068° 59.083' W)



*Rendezvous in the vicinity of RW “EG” Mo (A)*



*Finish at R “12” BELL south of Robinson Rock*

**SQUADRON DISBANDS AFTER RACING**