



# 27<sup>th</sup> Annual Annapolis Leukemia Cup

ORGANIZING AUTHORITY  
Eastport Yacht Club

Assist by  
Annapolis Yacht Club

Saturday, 01 June 2019



## GENERAL SAILING INSTRUCTIONS

with Amendment No. 1

### ANNAPOLIS FLEETS

#### 1 RULES

- 1.1 Racing will be governed by the *rules* as defined in the current *Racing Rules of Sailing* (RRS).
- 1.2 Neither spinnakers nor double headsails are permitted in the Leukemia Cruising Class. Entrants with racing experience are not permitted in the Leukemia Cruising Class; they shall participate in other classes.
- 1.3 PHRF N competitors only may use double headsails.
- 1.4 The notation “[DP]” in a rule in these Sailing Instructions means that the penalty for a breach of that rule may, at the discretion of the Protest Committee, be less than disqualification.
- 1.5 The notation “[NP]” in a rule in these Sailing Instructions means that a boat may not protest another boat for breaking that rule. This changes RRS 60.1(a).

#### 2 NOTICES TO COMPETITORS

Notices to competitors will be posted on the Official Notice Board, located electronically at <http://eastportyc.org/leukemia-cup>. Courtesy information may be provided on the board near the ground floor rear entryway doors and “Sparky’s Shed” on the Eastport Yacht Club (EYC) grounds.

#### 3 CHANGES TO THE SAILING INSTRUCTIONS

Any change to the SIs will be posted before 0900 hours on the day of the race, except that any change to the schedule of races will be posted by 2000 hours the day before it will take effect.

#### 4 SIGNALS MADE ASHORE

- 4.1 Signals made ashore will be displayed from the EYC flagpole.
- 4.2 When flag AP is displayed ashore, “1 minute” is replaced with “not less than 60 minutes.” This changes RRS Race Signals.

#### 5 SCHEDULE OF RACES

- 5.1 For **Division A**, refer to Attachment A.
- 5.2 For **Division B**, refer to Attachment B.
- 5.3 For **Division C**, refer to Attachment C.

#### 6 RACING AREAS

The racing areas will be on the Severn River and the Chesapeake Bay, off Annapolis. Refer to Figure 1.





7 FLEET ASSIGNMENTS

Fleet assignments, RC assignment, and course information is as follows. Refer to Figure 1.

	<b>Division A</b>	<b>Division B</b>	<b>Division C</b>
RC:	EYC	AYC	EYC
Rendezvous:	1AH (FI G, 4.0s)	Horn Point (FI W, 6.0s)	R2 (FI R, 2.5s)
VHF:	73	72	68
	<b>CLASSES</b>	<b>CLASSES</b>	<b>CLASSES</b>
	PHRF Spin 1	Cal 25	Leukemia Cruising
	PHRF Spin 2	Harbor 20	CRCA Non-Spin
	J/35	Alerion Express 28	CRCA Spin
	J/105		PHRF N
	J/30		Multihull
	J/80		

8 CHECK IN

- 8.1 For **Division A**, refer to Attachment A.
- 8.2 For **Division B**, refer to Attachment B.
- 8.3 For **Division C**, refer to Attachment C.

9 MARKS

- 9.1 For **Division A**, refer to Attachment A.
- 9.2 For **Division B**, refer to Attachment B.
- 9.3 For **Division C**, refer to Attachment C.

10 THE START

- 10.1 For **Division A**, refer to Attachment A.
- 10.2 For **Division B**, refer to Attachment B.
- 10.3 For **Division C**, refer to Attachment C.

11 RECALLS

- 11.1 For **Division A**, refer to Attachment A.
- 11.2 For **Division B**, refer to Attachment B.
- 11.3 For **Division C**, refer to Attachment C.

12 THE FINISH

- 12.1 For **Division A**, refer to Attachment A.
- 12.2 For **Division B**, refer to Attachment B.
- 12.3 For **Division C**, refer to Attachment C.

13 PENALTY SYSTEM

- 13.1 For **Division A**, refer to Attachment A.
- 13.2 For **Division B**, refer to Attachment B.
- 13.3 For **Division C**, refer to Attachment C.

14 TIME LIMIT

- 14.1 For **Division A**, refer to Attachment A.
- 14.2 For **Division B**, refer to Attachment B.
- 14.3 For **Division C**, refer to Attachment C.

15 REPORT OF THE RACE COMMITTEE

The Report of the Race Committee regarding incidents on the water shall be posted on the Official Notice Board no later than fifteen (15) minutes after the Signal Vessel docks. The report shall include scoring-related actions (DNC, DNS, OCS, ZFP, UFD, BFD, DNF, DNE) and the Signal Vessel dock time.





**16 SCORING INQUIRIES, PROTESTS, AND REQUESTS FOR REDRESS**

- 16.1 **[DP] [NP]** A boat intending to protest an incident in the racing area shall inform the RC when she finishes, or via VHF channel 73 when leaving the racecourse without finishing, or via email at [race.committee@eastportyc.org](mailto:race.committee@eastportyc.org). This changes RRS 61.1(a).
- 16.2 Scoring Inquiries, Protests and Requests for Redress shall be filed with the RC Office (first floor, on the waterside of the building) within the Protest Time Limit. Forms are available outside of the office.
- 16.3 The protest time limit is sixty (60), minutes after the RC Signal Vessel dock time. This posting constitutes the notification required in RRS 61.1b and 63.2. The time limit for a Request for Redress based on an incident in the racing area shall be the Protest Time Limit. This changes RRS 62.2.
- 16.4 The Protest Committee will attempt to hear protests in the order of receipt by the Protest Secretary. Hearings may be scheduled prior to the Protest Time Limit if the parties and witnesses are present. Parties and witnesses to a hearing shall remain on call in the vicinity of the protest room.
- 16.5 When the RC or Protest Committee protests a boat, the requirements of RRS 61.1(b) to notify the boat may be met by posting a list of protested boats on the Official Notice Board before the end of the protest time limit.

**17 SCORING**

- 17.1 For **Division A**, refer to Attachment A.
- 17.2 For **Division B**, refer to Attachment B.
- 17.3 For **Division C**, refer to Attachment C.

**18 SAFETY**

- 18.1 **[DP] [NP]** A boat that retires from a race shall notify the RC as soon as possible either by hail or on VHF channel 73, or via the EYC cell phone, (443) 875-3801, or via email at [race.committee@eastportyc.org](mailto:race.committee@eastportyc.org). A voicemail message shall include the approximate time of the message, the skipper's name, boat name, sail number, and class.
- 18.2 **[DP] [NP]** A boat shall not exercise right of way, cross in proximity to, or interfere with reasonable transit of the race area by commercial traffic of any kind. Boats must take evasive action well in advance of a potentially dangerous situation. The US Coast Guard, ship captains, and bay pilots have been encouraged to report any incident they observe.
- 18.3 **[NP]** A boat without way may use any means of propulsion to avoid underway commercial traffic, provided:
  - (a) the boat does not gain an advantage;
  - (b) using the propulsion is the boat's only means of avoiding the commercial traffic; and,
  - (c) the boat submits a report (in writing or by email) to the RC by the protest filing deadline that describes the incident and the boat's actions.
- 18.4 **[NP]** The RC or Protest Committee may protest a boat for SI 18.2 and 18.3 based on information received from any source. The protest time limit does not apply. This changes RRS 60.2, RRS 60.3, and RRS 61.3.

**19 DISPOSAL OF TRASH**

**[DP] [NP]** This is a Clean Race; all competitors are strongly encouraged to use multi-use water bottles instead of disposable water bottles, and to recycle whenever possible. A competitor shall not intentionally put trash in the water.



**20 RADIO COMMUNICATION**

- 20.1 For **Division A**, refer to Attachment A.
- 20.2 For **Division B**, refer to Attachment B.
- 20.3 For **Division C**, refer to Attachment C.

**21 PRIZES**

- 21.1 Prizes in each class will be given as follows:
  - 1<sup>st</sup> Place for three (3) or more entries;
  - 1<sup>st</sup> and 2<sup>nd</sup> Places for five (5) or more entries; and,
  - 1<sup>st</sup>, 2<sup>nd</sup>, and 3<sup>rd</sup> Places for seven (7) or more entries.
- 21.2 The Leukemia and Lymphoma Society will award additional prizes to the top fundraising boat in each class, as well as the overall top three (3) fundraisers for the event.





21.3 Participants who compete in all three (3) Annapolis-based charity regattas – Leukemia Cup, CRAB Cup, and Hospice Cup – will be eligible for the Weems & Plath Triple Crown Trophy, to be awarded at the end of the season. The final standings will be a combination of race and fundraising results across all events.

**21 DISCLAIMER OF LIABILITY**

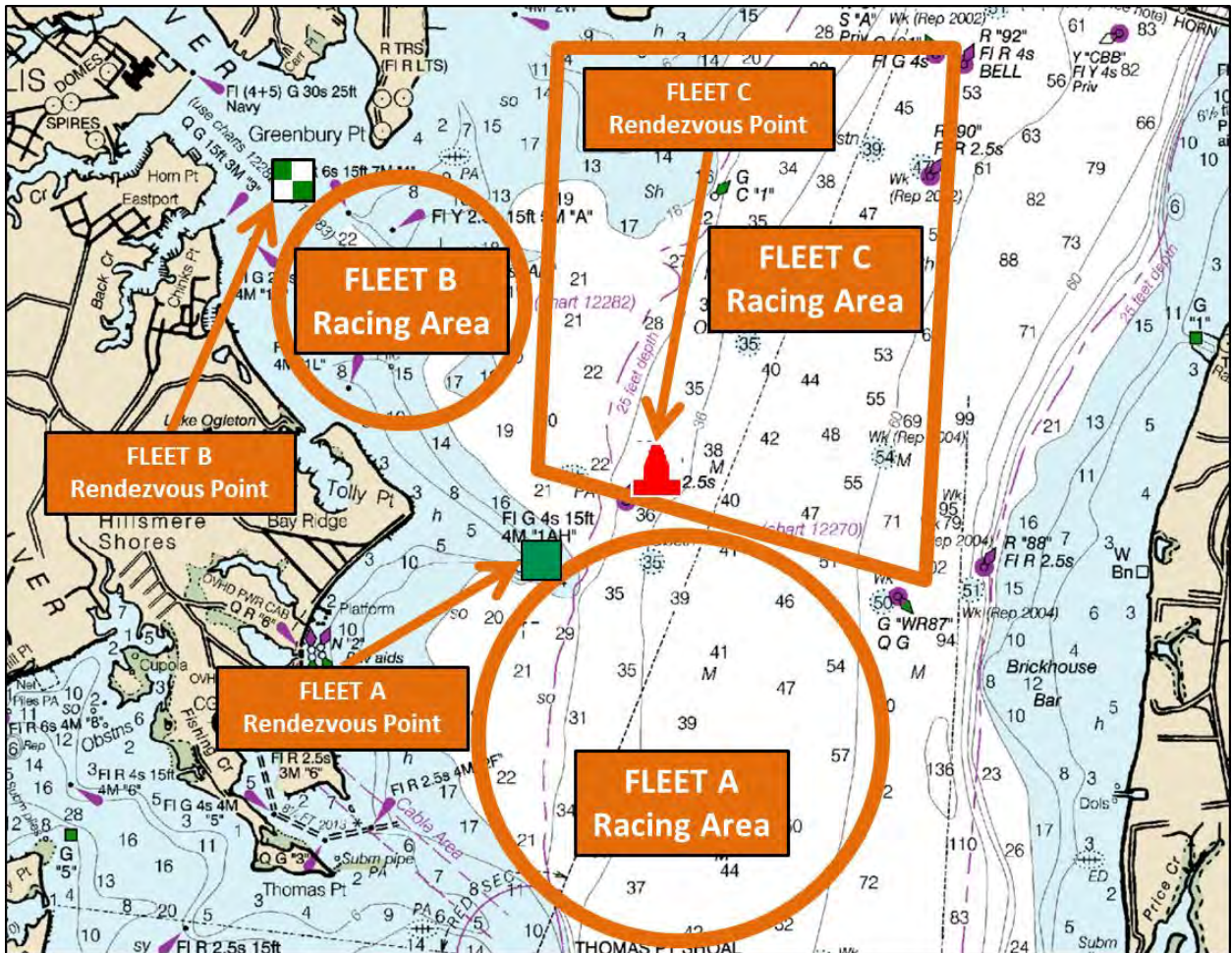
Boats participate in Leukemia Cup entirely at their own risk; see RRS 4. The OA will accept no liability for material damage, personal injury, or death sustained in conjunction with or prior to, during, or after the event.

**22 INSURANCE**

**[DP] [NP]** Each participating boat shall be insured with valid third-party liability insurance with a minimum coverage of \$300,000 (US) per incident, or the equivalent.

**23 SOCIAL**

23.1 EYC will host the “Rock the Dock” social and prize-giving party following racing. The party is scheduled to begin at 1700 hours.



**FIGURE 1. Division A, B, & C Rendezvous Points & Racing Areas**





# ATTACHMENT A

## for the PHRF SPIN 1, PHRF SPIN 2, J/35, J/105, J/30, & J/80 Classes

### A1 SCHEDULE OF RACES

- A1.1 Three (3) races are scheduled for the **PHRF SPIN 1, PHRF SPIN 2, J/35, J/105, J/30,** and **J/80** classes.
- A1.2 Division A boats shall rendezvous at 1000 hours in the vicinity of 1AH (FI G, 4.0s) (CBYRA “M”).
- A1.3 The Warning Signal for the first race is intended to be made at 1100 hours.
- A1.4 No Warning Signal shall be made after 1530 hours.
- A1.5 **[DP]** The **PHRF SPIN 1** and **PHRF SPIN 2** racers shall display from the backstay their class flag as specified in the CBYRA General SI 4. The **J/35, J/105, J/30,** and **J/80** racers are encouraged to display from the backstay their class flag as specified in the CBYRA General SI 4.

### A2 CHECK IN

**[DP] [NP]** Prior to starting her first race, each boat shall check in by sailing past the stern of the RC Signal Vessel on starboard tack, hail the sail number, and be acknowledged by the RC.

### A3 THE COURSES

- A3.1 The courses will be windward-leeward, as shown in Figure 2 (not to scale). Marks shall be rounded and the finishing line crossed in the order presented.
- A3.2 No later than the Warning Signal, the course to be sailed, the approximate heading, and the distance to the first mark will be designated by placards displayed on the stern or side of the RC Signal Vessel that is opposite the starting line.
- A3.3 RC may set a leeward gate. If a leeward gate is placed, boats shall pass between the two marks.
- A3.4 When the first mark of the course is to be a change mark, code flag “C” will be displayed by the Signal Vessel before the warning signal, accompanied by a series of repetitive sound signals.

### A4 MARKS

The marks shall be as described below.

	<b>PHRF SPIN 1, PHRF SPIN 2, J/35, J/105, J/30, J/80</b>
	Race Committee: EYC
Start Mark	Lime Green Tetrahedron
Weather Mark	<b>PHRF SPIN 1, J/35, &amp; J/105:</b> Large Orange Cylinder <b>PHRF SPIN 2, J/30, &amp; J/80:</b> Lime Green Cylinder
Leeward Mark	Large Orange Cylinder
Weather Change Mark	<b>PHRF SPIN 1, J/35, &amp; J/105:</b> Yellow Tetrahedron <b>PHRF SPIN 2, J/30, &amp; J/80:</b> Lime Green Cylinder w/Black Band
Finish Mark	Pink Tetrahedron

### A5 THE START

- A5.1 The starting line will be between a staff displaying an orange flag on the RC Signal Vessel at the starboard end, and either a staff displaying an orange flag on an anchored RC mark vessel, or the course side of the starting mark at the port end.





## LEUKEMIA CUP – ANNAPOLIS FLEETS



- A5.2 The class flags and intended start order for the first race shall be as defined immediately below. Subsequent starts may be in a different order so as to maximize racing for all classes.

Fleet A	
Race Committee: EYC	
CLASS	FLAG / PENNANT
PHRF Spin 1 & J/35	"1" & "K"
J/105	"V"
J/80	"J"
PHRF Spin 2 & J/30	"2" & "D"

### A6 RECALLS

The RC intends to hail on the VHF channel specified in SI Attachment A11.2, after the starting signal, the sail number(s) of boats that are OCS. A boat may not base a request for redress on the failure to hear or receive the announcement, the timeliness of the announcement, or the order in which boats are announced. This changes RRS 41 and 62.1(a).

### A7 THE FINISH

The finishing line shall be between the staff or halyard on the RC Signal Vessel displaying a blue flag and the course side of the finishing mark.

### A8 PENALTY SYSTEM

- A8.1 RRS Appendix V1, Penalty at the Time of An Incident, will apply.  
 A8.2 RRS Appendix V2, Penalty Taken After A Race, will apply, and is changed to: "After a race, a boat that may have broken one or more rules of Part 2 or RRS 31 in an incident while racing may take a Post-Race Penalty for that incident. A boat takes the penalty by delivering a written notice to the race office or sending an email to [race.committee@eastportyc.org](mailto:race.committee@eastportyc.org) that identifies the race number and when and where the incident occurred. However, RRS 44.1(a) and 44.1(b) apply, and the penalty shall be taken at least fifteen (15) minutes before the protest time limit."

### A9 TIME LIMIT

RRS 35 (Time Limit) is replaced by: "If no boats in her class have finished within two (2) hours, the race shall be abandoned. A boat still racing twenty (20) minutes after the first boat in her class finishes, and not subsequently retiring, being penalized or given redress, will be scored TLE (Time Limit Expired, see Scoring) and should proceed to the starting area if another race is scheduled."

### A10 SCORING

- A10.1 RRS Appendix A4, Low Point System, will apply.  
 A10.2 Handicap scoring will be in accordance with the PHRF Time-on-Time system.  
 A10.3 One (1) scored race is required to constitute a series.  
 A10.4 A boat's series score will be the total of her race scores. This changes RRS A2.  
 A10.5 Boats to be scored TLE and not thereafter retiring, being penalized or given redress will be scored points equal to the number of boats finishing within the time limit plus two (2) points by the RC without a hearing. This changes RRS A4.2 and A5.

### A11 RADIO COMMUNICATIONS

- A11.1 **[DP] [NP]** Boats shall have a working VHF radio capable of communicating on VHF channels 9, 13, 16, 72, 68, and 73.  
 A11.2 Division A RC will communicate with competitors on VHF channel 73.  
 A11.3 Boats are encouraged to make contact with commercial traffic on VHF channel 13, as required for safety.



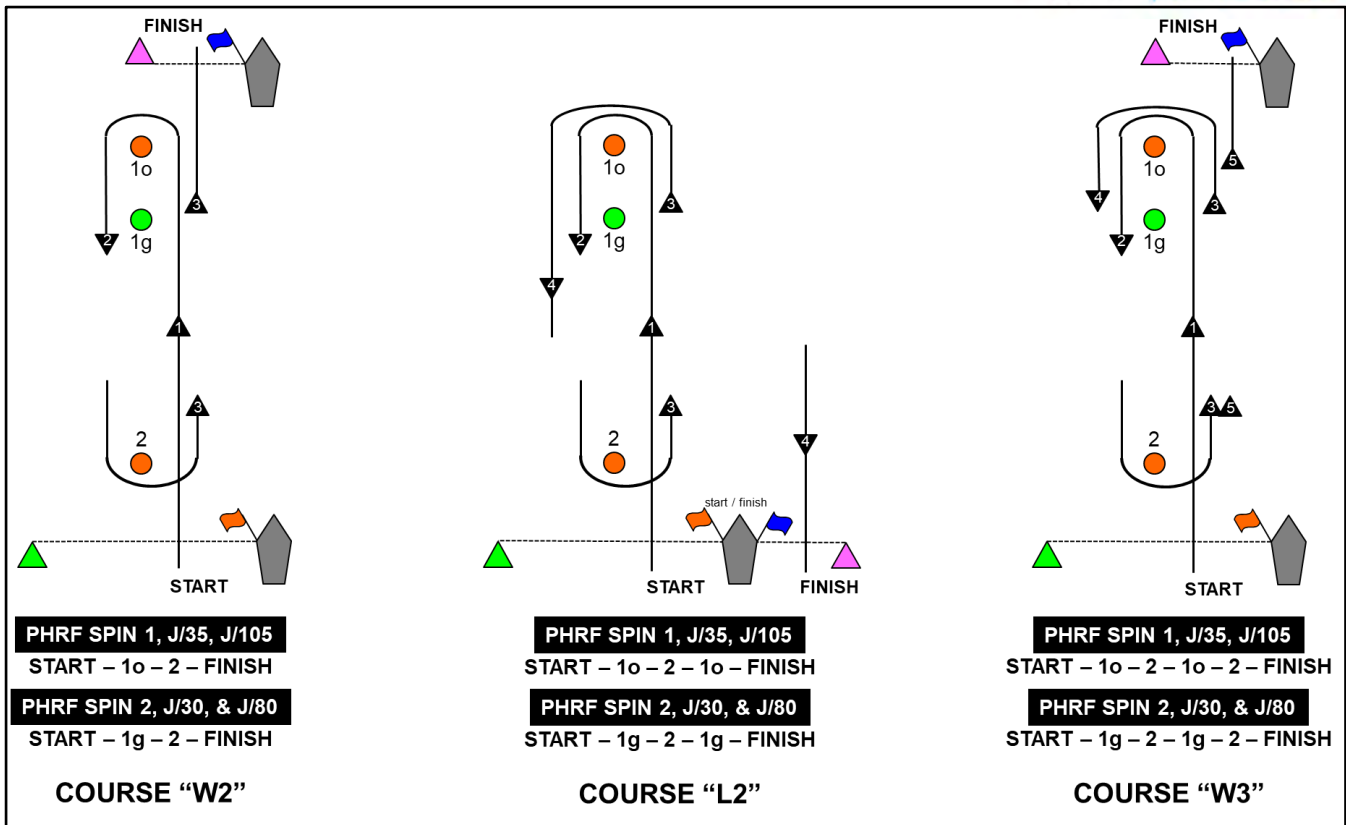


FIGURE 2. PHRF SPIN 1, PHRF SPIN 2, J/35, J/105, J/30, & J/80 Course Diagrams and Descriptions





# ATTACHMENT B

## for the ALERION EXPRESS 28, CAL 25, & HARBOR 20 Classes

### B1 SCHEDULE OF RACES

- B1.1 Three (3) races are scheduled for the **ALERION EXPRESS 28**, **CAL 25**, and **HARBOR 20** classes.
- B1.2 Boats shall rendezvous at 1030 hours in the vicinity of the green and white Horn Point mark (HP, FI W, 6.0s). The RC will display code flag “L” and proceed to the starting area.
- B1.3 The Warning Signal for the first race is intended to be made at 1100 hours.
- B1.4 No Warning Signal shall be made after 1530 hours.

### B2 CHECK IN

**[DP] [NP]** Prior to starting, each boat shall check in by sailing past the stern of the RC Signal Vessel on starboard tack, hail the sail number, and be acknowledged by the RC.

### B3 THE COURSES

- B3.1 The courses will be windward-leeward, as shown in Figure 3 (not to scale). Marks shall be rounded and the finishing line crossed in the order presented.
- B3.2 No later than the Warning Signal, the course to be sailed will be designated on a board displayed on the stern or side of the RC Signal Vessel that is opposite the starting line.
- B3.3 When the first mark of the course is to be a change mark, code flag “C” will be displayed by the Signal Vessel before the warning signal, accompanied by a series of repetitive sound signals.
- B3.4 If only one gate mark is set, boats shall round the single mark to port.

### B4 MARKS

The marks shall be as described below.

ALERION EXPRESS 28, CAL 25, & HARBOR 20 MARKS	
Race Committee: AYC	
Start Mark	Small Yellow Cylinder
Weather Mark	Small Orange Cylinder
Weather Mark Offset	Small Green Cylinder
Leeward Mark(s)	Small Orange Cylinder(s)
Weather Change Mark	Orange Cylinder w/ Black Band
Finish Mark	Small Yellow Cylinder

### B5 THE START

- B5.1 Starts shall be in accordance with RRS 26.
- B5.2 The class flags and intended start order for the first race shall be as defined immediately below. Subsequent starts may be in a different order so as to maximize racing for all classes.

Fleet B	
Race Committee: AYC	
CLASS	FLAG / PENNANT
Alerion Express 28	“4”
Cal 25	“T”
Harbor 20	“W”

- B5.3 The starting line will be between a staff displaying an orange flag on the RC Signal Vessel at the starboard end, and the course side of the starting/finishing mark at the port end.







## B6 RECALLS

The RC intends to hail on VHF channel 72 after the starting signal the sail number(s) of boats that are OCS. A boat may not base a request for redress on the failure to hear or receive the announcement, the timeliness of the announcement, or the order in which boats are announced. This changes RRS 41 and 62.1(a).

## B7 THE FINISH

The starting/finishing line shall be between the staff or halyard on the RC Signal Vessel displaying an orange flag and the course side of the finishing mark.

## B8 PENALTY SYSTEM

B8.1 RRS Appendix V1, Penalty at the Time of An Incident, will apply.

B8.2 RRS Appendix V2, Penalty Taken After A Race, will apply, and is changed to: “After a race, a boat that may have broken one or more rules of Part 2 or RRS 31 in an incident while racing may take a Post-Race Penalty for that incident. A boat takes the penalty by delivering a written notice to the race office or sending an email to [race.committee@eastportyc.org](mailto:race.committee@eastportyc.org) that identifies the race number and when and where the incident occurred. However, RRS 44.1(a) and 44.1(b) apply, and the penalty shall be taken at least fifteen (15) minutes before the protest time limit.”

## B9 TIME LIMIT

B9.1 The race shall be abandoned if no boat has rounded the first mark within thirty (30) minutes of the start.

B9.2 RRS 35 (Time Limit) is replaced by: “If no boats in her class have finished within one and one half (1.5) hours, the race shall be abandoned. Boats still racing twenty (20) minutes after the first boat in her class finishes, and not subsequently retiring, being penalized or given redress, will be scored TLE (Time Limit Expired, see Scoring) and should proceed to the starting area if another race is scheduled.

## B10 SCORING

B10.1 RRS Appendix A4, Low Point System, will apply.

B10.2 One (1) scored race is required to constitute a series.

B10.3 A boat’s series score will be the total of her race scores. This changes RRS A2.

B10.4 Boats to be scored TLE and not thereafter retiring, being penalized or given redress will be scored points equal to the number of boats finishing within the time limit plus two (2) points by the RC without a hearing. This changes RRS A4.2 and A5.

## B11 RADIO COMMUNICATIONS

B11.1 **[DP] [NP]** Boats shall have a working VHF radio capable of communicating on VHF channels 9, 13, 16, 72, 68, and 73.

B11.2 Division B RC will communicate with competitors on VHF channel 72.

B11.3 Boats are encouraged to make contact with commercial traffic on VHF channel 13, as required for safety.



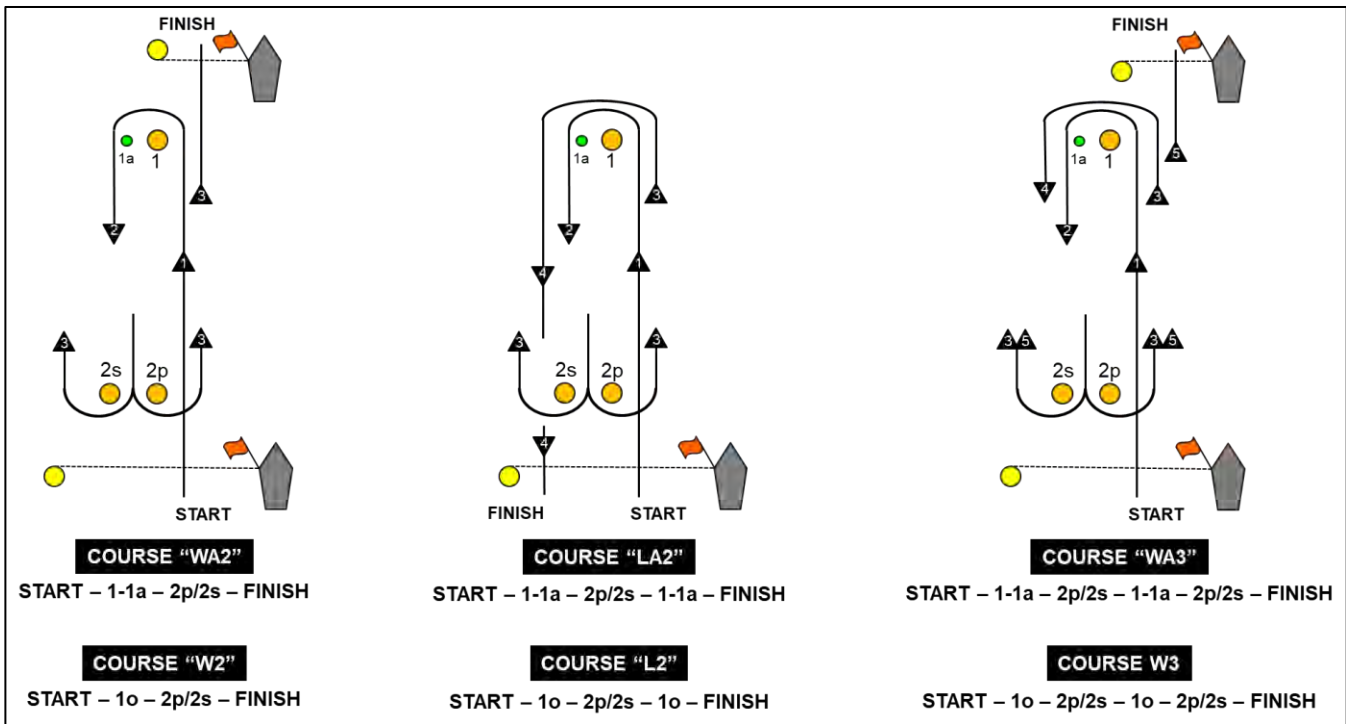


FIGURE 3. ALERION EXPRESS 28, CAL 25, HARBOR 20, & Course Diagrams & Descriptions





# ATTACHMENT C

## For the LEUKEMIA CRUISING, CRCA Non-Spin, CRCA Spin, PHRF N, & MULTIHULL Classes

### C1 SCHEDULE OF RACES

- C1.1 One (1) race is scheduled for the **LEUKEMIA CRUISING, CRCA, PHRF N, and MULTIHULL** classes.
- C1.2 Boats shall rendezvous at 1000 hours in the vicinity of R2 (FI R, 2.5s).
- C1.3 The Warning Signal for the race is intended to be made at 1100 hours.
- C1.4 No Warning Signal shall be made after 1400 hours.
- C1.5 Boats shall display from the backstay their class flag.
  - PHRF N:** pennant "5"
  - LEUKEMIA:** bright orange streamer (provided in the skippers bag)
  - CRCA (NON-SPIN & SPIN):** white flag
  - MULTIHULL:** code flag "W"

### C2 CHECK IN

**[DP] [NP]** Boats in Division C should not attempt to check in with the RC Signal Vessel.

### C3 THE COURSE

- C3.1 The **LEUKEMIA CRUISING, CRCA NON-SPIN, CRCA SPIN, PHRF N, and MULTIHULL** classes will sail the same course.
- C3.2 The course shall be posted on the Official Notice Board no later than 1730 hours on Friday, 31 May 2019.
- C3.3 **[DP]** A boat shall not cross the finish line until she is completing the last leg of the course. When the finishing line is closed it is an obstruction. A boat that breaks this rule shall not correct her error; however, she will be exonerated if she takes a One-Turn Penalty (see RRS 44.2.). This changes RRS 28.1.

### C4 MARKS

C4.1 Marks that may be used are identified immediately below. Refer to Figure 4.

CHART DESIGNATION		LIGHT	APPROXIMATE LOCATION
1	Y "AN"	FI Y, 4.0s	N 38° 57.81' / W 076° 26.81'
2	GC1	none	N 38° 58.19' / W 076° 24.86'
3	G91	FI G, 4.0s	N 38° 58.99' / W 076° 23.28'
4	WR87	Q G	N 38° 55.97' / W 076° 23.55'
5	R2	FI R, 2.5s	N 38° 56.50' / W 076° 25.56'
6	Red Inflatable Cylinder	none	N 38° 56.26' / W 076° 25.36'

C4.2 Marks shall be rounded in the order defined in the course that is posted in accordance with SI C3.2, reading from left to right. Marks designated in **"RED"** shall be rounded to port; marks designated in **"GREEN"** shall be rounded to starboard.

### C5 THE START

- C5.1 The start line shall be between a staff displaying an orange flag on the RC Signal Vessel and R2 (FI R, 2.5s).
- C5.2 **LEUKEMIA CRUISING, CRCA NON-SPIN, CRCA SPIN, & PHRF N** Classes
  - C5.2.1 This shall be a pursuit race with a reverse PHRF Time over Distance (ToD) starting order. The boat with the slowest (highest) rating shall start first and the fastest (lowest) rating shall start last.





C5.2.2 The RC shall signal the starting sequence as follows (this changes RRS 26):

TIME	SIGNAL	FLAG / SOUND
1100	Warning signal for all boats	Raise large EYC burgee with 1 sound
1101	Preparatory signal for the first boat to start	Raise code flag "P" with 1 sound
1104		Lower code flag "P" with a long sound
1105	Starting signal for the first boat to start	Lower large EYC burgee and briefly raise number pennant "0" with 1 sound
each subsequent start time	Starting signal for remaining boats	Briefly raise number pennant "0" with 1 sound

- C5.2.3 A boat's individual preparatory signal is four (4) minutes prior to her individual scheduled start. After the first boat has started, there will be no visual signal or sound for any subsequent preparatory signal. This changes RRS 26.
- C5.2.4 The start times for all boats shall be based on their PHRF ToD Circular Random handicap. The race shall use GPS time synchronization. The RC will attempt to broadcast a five (5) second countdown for each starting time on VHF channel 68. Failure of the RC to announce a start time will not be grounds for redress. This changes RRS 41 and 62.1(a).
- C5.2.5 The start time for each boat shall be available at EYC no later than 1730 hours on Friday, 31 May 2019, and will be posted on the EYC website.
- C5.2.6 After the Warning signal for the first start, boats shall stay clear of the starting area until four (4) minutes before their scheduled starting time.
- C5.2.7 In the event a postponement is signaled on the water, the RC shall announce the revised start times on VHF channel 68 before lowering the postponement flag.

C5.3 **MULTIHULL** Classes

- C5.3.1 The RC will attempt to signal the **MULTIHULL** class start sequence as soon as possible after completing the start of all boats in the **LEUKEMIA CRUISING, CRCA NON-SPIN, CRCA SPIN, PHRF N** classes pursuit race. The RC shall signal a wakeup call with multiple sounds, approximately one (1) minute prior to the Warning signal.
- C5.3.2 The start shall be in accordance with RRS 26.

**C6 RECALLS**

C6.1 **LEUKEMIA CRUISING, CRCA NON-SPIN, CRCA SPIN, & PHRF N** Classes

- C6.1.1 If any part of a boat's hull, crew or equipment is on the course side of the starting line at her starting signal and she is identified, she shall be considered On Course Side (OCS). She shall not attempt to clear herself, start, or restart, and shall, instead, sail to the first mark. The RC will attempt to broadcast her sail number on VHF channel 68. Flag X will not be used. This changes RRS 29.1.
- C6.1.2 **[DP] [NP]** A boat that is scored OCS shall, without a hearing, be penalized by having ten (10) minutes plus the amount of time that she was over early added to her elapsed time. In RRS 28, the word "start" is replaced with "start or take a penalty in accordance with SI C6.1.2". This changes RRS 28, 63.1, A4, and A5.
- C6.2 For the **MULTIHULL** classes, The RC intends to hail on VHF channel 68 after the starting signal the sail number(s) of boats that are OCS. The failure of any boat to hear the hail, the timeliness of the hail of OCS boats, failure to hail any boats, and the order of the boats in the hail shall not be grounds for granting redress. This changes RRS 41 and 62.1(a).

**C7 THE FINISH**

- C7.1 The RC will finish boats at a mark of the course. Competitors should look for a boat displaying an "RC Flag" at each mark of the course. The finishing line will be between the staff displaying a blue flag and the course side of the nearby mark.
- C7.2 The RC may shorten the course at any rounding mark in accordance with RRS 32.





**C8 PENALTY SYSTEM**

- C8.1 RRS Appendix V1, Penalty at the Time of An Incident, will apply.
- C8.2 RRS Appendix V2, Penalty Taken After A Race, will apply, and is changed to: “After a race, a boat that may have broken one or more rules of Part 2 or RRS 31 in an incident while racing may take a Post-Race Penalty for that incident. A boat takes the penalty by delivering a written notice to the race office or sending an email to [race.committee@eastportyc.org](mailto:race.committee@eastportyc.org) that identifies the race number and when and where the incident occurred. However, RRS 44.1(a) and 44.1(b) apply, and the penalty shall be taken at least fifteen (15) minutes before the protest time limit.”

**C9 TIME LIMIT**

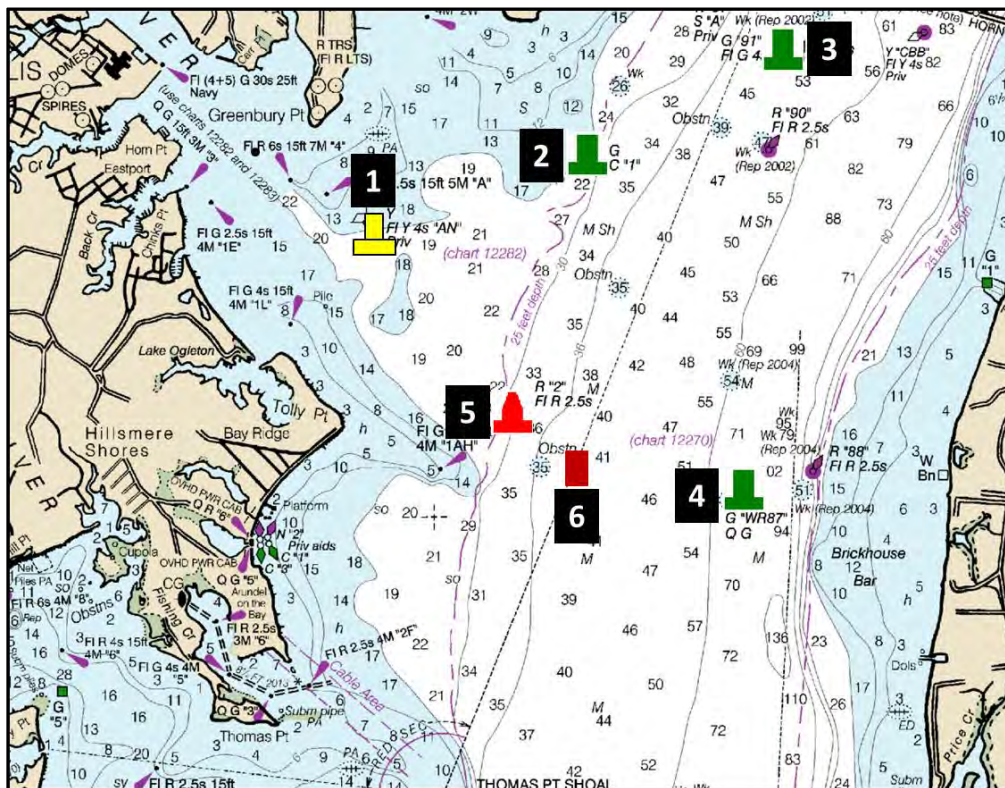
The RC shall abandon the race for a class if no boat in that class sails the course and finishes by 1600 hours. Boats not finished by 1600 shall be scored Time Limit Expired (TLE). This changes RRS 35.

**C10 SCORING**

- C10.1 RRS Appendix A4, Low Point System, will apply.
- C10.2 For the **LEUKEMIA CRUISING, CRCA NON-SPIN, CRCA SPIN, PHRF N** classes, handicap ratings will be in accordance with the PHRF Circular Random Time over Distance rating, and boats will be scored in the order of finish.
- C10.3 For the **MULTIHULL** classes, boats will be scored per the Chesapeake Multihull Association system.
- C10.4 Boats to be scored TLE and not thereafter retiring, being penalized or given redress will be scored points equal to the number of boats finishing within the time limit plus two (2) points by the RC without a hearing. This changes RRS A4.2 and A5.

**C11 RADIO COMMUNICATIONS**

- C11.1 **[DP] [NP]** Boats shall have a working VHF radio capable of communicating on VHF channels 9, 13, 16, 72, 68, and 73.
- C11.2 Division C RC will communicate with competitors on VHF channel 68.
- C11.3 Boats are encouraged to make contact with commercial traffic on VHF channel 13, as required for safety.
- C11.4 Failure to hear a broadcast, the RC’s failure to broadcast, or the content of any broadcast shall not be grounds for redress. This changes RRS 41 and 62.1(a).



**FIGURE 4. Marks for the LEUKEMIA CRUISING, CRCA NON-SPIN, CRCA SPIN, PHRF N, & MULTIHULL Classes**

