

# 27<sup>th</sup> Annual Annapolis Leukemia Cup

ORGANIZING AUTHORITY  
Eastport Yacht Club

Assist by  
Maryland Yacht Club  
Rock Creek Racing Association

Saturday, 01 June 2019



## SAILING INSTRUCTIONS

### ROCK CREEK FLEET

#### 1 RULES

- 1.1 Racing will be governed by the *rules* as defined in the current *Racing Rules of Sailing* (RRS).
- 1.2 The notation “[DP]” in a rule in these Sailing Instructions means that the penalty for a breach of that rule may, at the discretion of the Protest Committee, be less than disqualification.
- 1.3 The notation “[NP]” in a rule in these Sailing Instructions means that a boat may not protest another boat for breaking that rule. This changes RRS 60.1(a).

#### 2 NOTICES TO COMPETITORS

Notices to competitors will be posted on the Official Notice Board, located electronically at <http://eastportyc.org/leukemia-cup>. Courtesy information may be provided on the board near the ground floor rear entryway doors and “Sparky’s Shed” on the Eastport Yacht Club (EYC) grounds.

#### 3 CHANGES TO THE SAILING INSTRUCTIONS

Any change to the SIs will be posted before 0900 hours on the day of the race, except that any change to the schedule of races will be posted by 2000 hours the day before it will take effect.

#### 4 SCHEDULE OF RACES

- 4.1 One (1) race is scheduled.
- 4.2 Boats shall rendezvous at 0930 hours in the vicinity of “G 23 FI G, 4.0s.”
- 4.3 The Warning Signal for the race is intended to be made at 1000 hours.
- 4.4 No Warning Signal shall be made after 1200 hours.

#### 5 CLASS FLAGS – ORDER OF START

Boats shall display from the backstay their class flag. The class flags and intended order of start are:  
PHRF Non-Spinnaker: pennant “5”

#### 6 RACING AREAS

The racing areas will be on the Patapsco River and Chesapeake Bay, between Seven Foot Knoll and Annapolis.

#### 7 CHECK IN

[DP] [NP] Prior to starting, all boats shall check in by sailing past the stern of the Race Committee (RC) Vessel, hail her sail number, and be acknowledged by the RC.





8 THE COURSE

The diagram in Figure 1 shows the course, including the approximate angles between legs, the order in which the marks are to be passed, and the side on which each mark is to be left.

9 MARKS

The marks of the course are identified immediately below. Refer to Figure 1.

CHART DESIGNATION	LIGHT	APPROXIMATE LOCATION
G 23	FI G, 4.0s	N 39° 09.34' / W 076° 25.11'
Sandy Point Lighthouse	none	N 39° 00.96' / W 076° 23.07'
WR 87	Q G	N 38° 56.00' / W 076° 23.56'
EYC "R" (red inflatable cylinder)	none	N 38° 56.26' / W 076° 25.36'
R 2	FI R, 2.5s	N 38° 56.50' / W 076° 25.56'

10 THE START

- 10.1 Races will be started using RRS 26.
- 10.2 The starting line will be between a staff displaying a yellow flag on the RC vessel at the starboard end and "G 23 FI G, 4.0s" at the port end.
- 10.3 At the discretion of the RC, and while in the vicinity of "G 23 FI G, 4.0s," the starting line may be moved from "G 23 FI G, 4.0s" to "G 21 Q G" or "G 19 FI G, 4.0s" by displaying code flag "L" in accordance with RRS Race Signals.

11 RECALLS

The RC intends to hail on VHF channel 68 after the starting signal the sail number(s) of boats that are OCS. The failure of any boat to hear the hail, the timeliness of the hail of OCS boats, failure to hail any boats, and the order of the boats in the hail shall not be grounds for granting redress. This changes RRS 41 and 62.1(a).

12 THE FINISH

- 12.1 The Finish Line shall be between a staff displaying a blue flag on the RC Finish Vessel and the course side of Severn River lighted buoy "R 2 FI R, 2.5s."
- 12.2 If the RC Finish Vessel is not on station, a boat shall take her finish time when she passes Severn River lighted buoy "R 2 FI R, 2.5s" within one hundred (100) yards and the mark bears 085° degrees magnetic. Boats recording their own finish shall report their finish time to the RC as soon as practical after finishing by contacting the Principal Race Officer (PRO) by leaving a message on the EYC cell phone, (443) 875-3801, or via email at [race.committee@eastportyc.org](mailto:race.committee@eastportyc.org).

13 PENALTY SYSTEM

- 13.1 RRS Appendix V1, Penalty at the Time of An Incident, will apply.
- 13.2 RRS Appendix V2, Penalty Taken After A Race, will apply, and is changed to: "After a race, a boat that may have broken one or more rules of Part 2 or RRS 31 in an incident while racing may take a Post-Race Penalty for that incident. A boat takes the penalty by delivering a written notice to the race office or sending an email to [race.committee@eastportyc.org](mailto:race.committee@eastportyc.org) that identifies the race number and when and where the incident occurred. However, RRS 44.1(a) and 44.1(b) apply, and the penalty shall be taken at least fifteen (15) minutes before the protest time limit."

14 TIME LIMIT

The RC shall abandon the race for a class if no boat in that class sails the course and finishes by 1600 hours. Boats not finished by 1600 shall be scored Time Limit Expired (TLE). This changes RRS 35.

15 REPORT OF THE RACE COMMITTEE

The Report of the Race Committee regarding incidents on the water shall be posted on the Official Notice Board no later than fifteen (15) minutes after the Signal Vessel docks. The report shall include scoring-related actions (DNC, DNS, OCS, ZFP, UFD, BFD, DNF, DNE) and the Signal Vessel dock time.





**16 SCORING INQUIRIES, PROTESTS, AND REQUESTS FOR REDRESS**

- 16.1 **[DP] [NP]** A boat intending to protest an incident in the racing area shall inform the RC when she finishes, or via VHF channel 68 when leaving the racecourse without finishing, or via email at [race.committee@eastportyc.org](mailto:race.committee@eastportyc.org). This changes RRS 61.1(a).
- 16.2 Scoring Inquiries, Protests and Requests for Redress shall be filed with the RC Office (first floor, on the waterside of the building) within the Protest Time Limit. Forms are available outside of the office.
- 16.3 The protest time limit is sixty (60), minutes after the RC Signal Vessel dock time. This posting constitutes the notification required in RRS 61.1b and 63.2. The time limit for a Request for Redress based on an incident in the racing area shall be the Protest Time Limit. This changes RRS 62.2.
- 16.4 The Protest Committee will attempt to hear protests in the order of receipt by the Protest Secretary. Hearings may be scheduled prior to the Protest Time Limit if the parties and witnesses are present. Parties and witnesses to a hearing shall remain on call in the vicinity of the protest room.
- 16.5 When the RC or Protest Committee protests a boat, the requirements of RRS 61.1(b) to notify the boat may be met by posting a list of protested boats on the Official Notice Board before the end of the protest time limit.
- 16.6 On the last day of the regatta, a request for redress based on a protest committee decision shall be delivered no later than thirty (30) minutes after the decision was posted. This changes RRS 62.2.

**17 SCORING**

Handicap scoring will be in accordance with the PHRF Time-on-Time Circular Random rating.

**18 SAFETY**

- 18.1 **[DP] [NP]** A boat that retires from a race shall notify the RC as soon as possible either by hail or on VHF channel 68, or via the EYC cell phone, (443) 875-3801, or via email at [race.committee@eastportyc.org](mailto:race.committee@eastportyc.org). A voicemail message shall include the approximate time of the message, the skipper's name, boat name, sail number, and class.
- 18.2 **[DP] [NP]** A boat shall not exercise right of way, cross in proximity to, or interfere with reasonable transit of the race area by commercial traffic of any kind. Boats must take evasive action well in advance of a potentially dangerous situation. The US Coast Guard, ship captains, and bay pilots have been encouraged to report any incident they observe.
- 18.3 **[NP]** A boat without way may use any means of propulsion to avoid underway commercial traffic, provided:
  - (a) the boat does not gain an advantage;
  - (b) using the propulsion is the boat's only means of avoiding the commercial traffic; and,
  - (c) the boat submits a report (in writing or by email) to the RC by the protest filing deadline that describes the incident and the boat's actions.
- 18.4 **[NP]** The RC or Protest Committee may protest a boat for SI 18.2 and 18.3 based on information received from any source. The protest time limit does not apply. This changes RRS 60.2, RRS 60.3, and RRS 61.3.

**19 DISPOSAL OF TRASH**

**[DP] [NP]** This is a Clean Race; all competitors are strongly encouraged to use multi-use water bottles instead of disposable water bottles, and to recycle whenever possible. A competitor shall not intentionally put trash in the water.



**20 RADIO COMMUNICATION**

- 20.1 **[DP] [NP]** Boats shall have a working VHF radio capable of communicating on VHF channels 9, 13, 16, and 68.
- 20.2 RC will communicate with competitors on VHF channel 68.
- 20.3 Boats are encouraged to make contact with commercial traffic on VHF channel 13, as required for safety.

**21 PRIZES**

- 21.1 Prizes in each class will be given as follows:
  - 1<sup>st</sup> Place for three (3) or more entries;
  - 2<sup>nd</sup> Place for five (5) or more entries; and,
  - 3<sup>rd</sup> Place for seven (7) or more entries.
- 21.2 The Leukemia and Lymphoma Society will award additional prizes to the top fundraising boat in each class, as well as the overall top three (3) fundraisers for the event.





21.3 Participants who compete in all three (3) Annapolis-based charity regattas – Leukemia Cup, CRAB Cup, and Hospice Cup – will be eligible for the Weems & Plath Triple Crown Trophy, to be awarded at the end of the season. The final standings will be a combination of race and fundraising results across all events.

**22 DISCLAIMER OF LIABILITY**

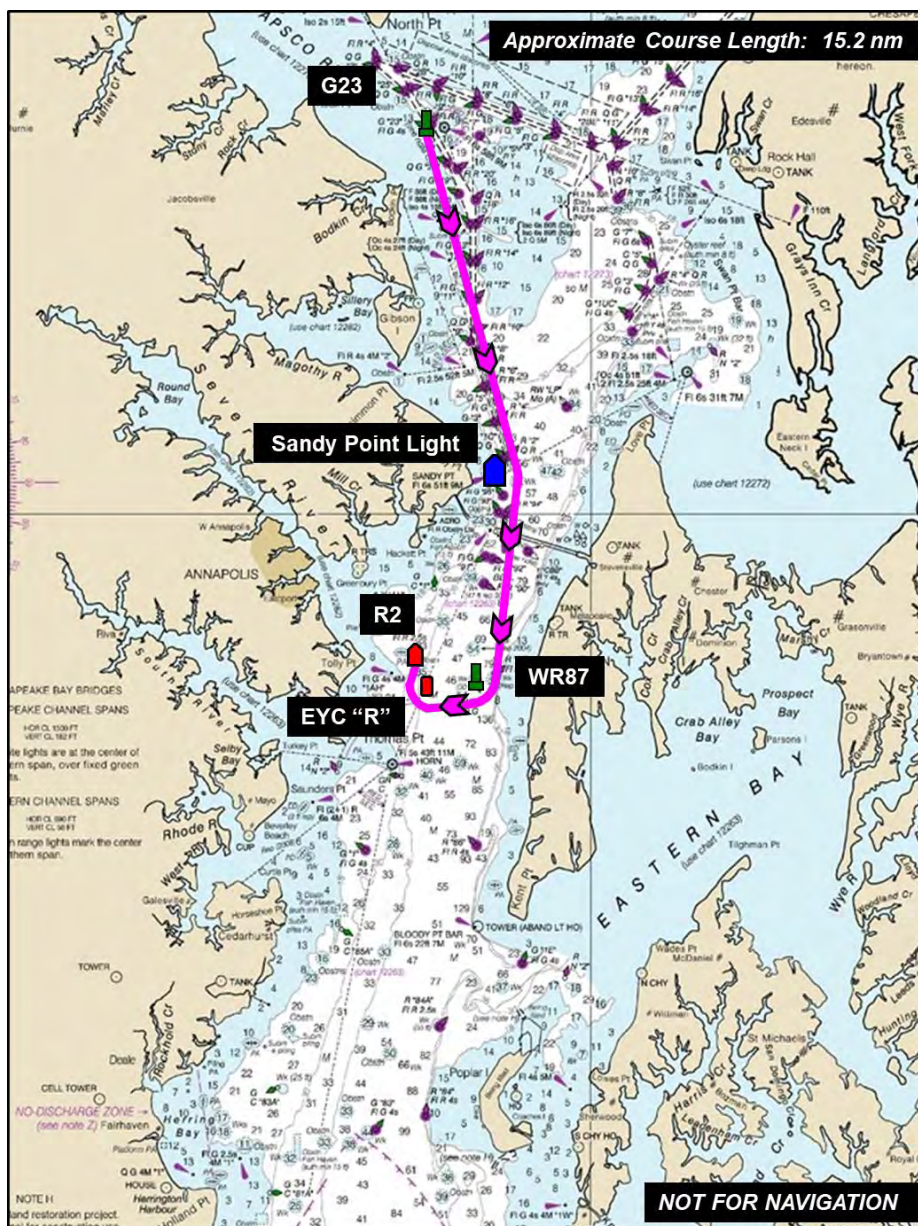
Boats participate in Leukemia Cup entirely at their own risk; see RRS 4. The OA will accept no liability for material damage, personal injury, or death sustained in conjunction with or prior to, during, or after the event.

**23 INSURANCE**

**[DP] [NP]** Each boat shall be insured with valid third-party liability insurance with a minimum coverage of \$300,000.

**24 SOCIAL**

EYC will host the “Rock the Dock” social and prize-giving party following racing. The party is scheduled to begin at 1700 hours.



**FIGURE 1. Rock Creek Fleet Course Diagram**

