

# CRAB Cup

CBYRA Sanction #344

Saturday, 17 August 2019

ORGANIZING AUTHORITY

Eastport Yacht Club

CRAB CUP  
FOR ACCESSIBLE BOATING



FOUNDING SPONSOR

## SAILING INSTRUCTIONS for the PURSUIT RACE

### 1 RULES

- 1.1 Racing shall be governed by the rules as defined in the *Racing Rules of Sailing* (RRS).
- 1.2 All boats shall comply with their Class Rules.
- 1.3 Boats registered in the **CRAB** class shall not use spinnakers. All other classes shall race in accordance with their Class Rules.
- 1.4 The notation "**[DP]**" in a rule in these Sailing Instructions (SIs) means that the penalty for a breach of that rule may, at the discretion of the Protest Committee, be less than disqualification.
- 1.5 The notation "**[NP]**" in a rule in these Sailing Instructions means that a boat may not protest another boat for breaking that rule. This changes RRS 60.1(a).

### 2 NOTICES TO COMPETITORS

Notices to competitors will be posted on the Official Notice Board, located electronically at <http://eastportyc.org/crab-cup>. Courtesy information may be provided on the board near the ground floor rear entryway doors and "Sparky's Shed" on the Eastport Yacht Club (EYC) grounds.

### 3 CHANGES TO THE SAILING INSTRUCTIONS

Any changes in the SIs shall be posted before 0800 hours on the day it will take effect, except that any change in the schedule of races shall be posted by 2000 hours on the day before it takes effect.

### 4 SIGNALS MADE ASHORE

- 4.1 Signals made ashore shall be displayed from the EYC flagpole, located on the waterside of the clubhouse.
- 4.2 When flag AP is displayed ashore, "1 minute" is replaced with "not less than sixty (60) minutes in the race signal AP. This changes RRS Race Signals.

### 5 SCHEDULE OF RACES

- 5.1 The schedule of events is:

Thu, 15 August	2000	Entry & registration closes
Fri, 16 August	1730	Individual start times for the pursuit race posted
	1730-1930	Skippers bags available at EYC
Sat, 17 August	0830-1000	Skippers bags available at EYC
	1100	Rendezvous
	1200	Warning signal for first starter in the pursuit race
		Warning signal for Harbor 20 class will be made as soon as practicable after the final pursuit racer starts

- 5.2 Boats are to rendezvous at 1100 hours in the vicinity of **R2** (FI R, 2.5s).

- 5.3 No Warning signal shall be made after 1330 hours.



eastportyc\_race

Page 1 of 6

@eastportyc\_race



**6 CLASS FLAGS**

**[NP]** All PHRF and one-design racers shall display from the backstay their class flag as specified in paragraph 4 of the CBYRA Green Book General Sailing Instructions. Competitors in the **CRAB** class shall display the CRAB burgee from the backstay. The **CRAB** and **Viper 640** classes are not required to display a class flag.

**7 RACING AREA**

The racing area shall be in the vicinity of **R2** (FI R, 2.5s), at the start of the channel to the Severn River and Annapolis on the Chesapeake Bay.

**8 CHECK IN**

8.1 The RC shall use a separate check-in vessel. The vessel shall fly a solid yellow flag and shall be stationed approximately 100 yards west of the RC Signal Vessel. Do not attempt to check in with the Race Committee (RC) Signal Vessel.

8.2 **[DP] [NP]** Prior to starting, each boat shall check in by sailing past the stern of the RC Check-In Vessel on starboard tack, hail the sail number, and be acknowledged by the RC.

**9 THE COURSE**

9.1 RC shall designate one (1) of two (2) possible courses to be sailed (refer to FIGURE 1). The designated course will be identified on a board displayed on the check-in vessel and the Signal Vessel. The board will show either "A" or "B" to indicate which course shall be sailed. The Signal Vessel will also attempt to repeatedly state the course designation on VHF channel 73 during the start sequences. The two (2) possible courses are:

**Course "A"**

**START (R2) – G87 – GC SR – "O" – FINISH (R2)**

**Course "B"**

**START (R2) – G87 – "Y" – "O" – FINISH (R2)**

9.2 The distance for Course "A" is 7.5 nm. The distance for Course "B" is 5.0 nm.

**10 MARKS**

01 The marks have the following descriptions and Lat/Long coordinates.

<b>R2</b>	<b>G87</b>	<b>GC SR</b>	<b>"Y"</b>	<b>"O"</b>
<u>R2, FI 2.5s</u>	<u>G "WR87"</u>	<u>GC SR</u>	<u>5' Yellow Tetrahedron</u>	<u>5' Orange Cylinder</u>
N 38° 56.50'	N 38° 55.90'	N 38° 53.65'	N 38° 57.66'	N 38° 56.43'
W 076° 25.56'	W 076° 23.60'	W 076° 25.88'	W 076° 24.53'	W 076° 25.21'

10.2 The **HARBOR 20 (FULL CREW)** and **HARBOR 20 (SINGLEHANDED)** classes shall refer to Attachment A.

**11 THE START**

11.1 This shall be a pursuit race with a reverse PHRF Time over Distance (ToD) starting order. The boat with the slowest rating (highest PHRF number) shall start first and the fastest rating (lowest PHRF number) shall start last.

11.2 The RC shall signal the starting sequence as follows (this changes RRS 26):

TIME	SIGNAL	FLAG / SOUND
1200	Warning signal for all boats	Raise large EYC burgee with 1 sound
1201	Preparatory signal for the first boat to start	Raise code flag "P" with 1 sound
1204		Lower code flag "P" with a long sound
1205	Starting signal for the first boat to start	Lower large EYC burgee and briefly raise number pennant "0" with 1 sound
Each subsequent start time	Starting signal for remaining boats	Briefly raise number pennant "0" with 1 sound

11.3 A boat's individual preparatory signal is four (4) minutes prior to her individual scheduled start. After the first boat has started, there will be no visual signal or sound for any subsequent preparatory signal. This changes RRS 26.

11.4 The start times for all boats shall be based on their PHRF ToD Circular Random handicap. The race shall use GPS time synchronization. The RC will attempt to broadcast a five (5) second countdown for each





starting time on VHF channel 73. Failure of the RC to announce a start time will not be grounds for redress. This changes RRS 41 and 62.1(a).

- 11.5 The start time for each boat shall be available at EYC no later than 1730 hours on Friday, 16 August 2019, and will be posted on the EYC website.
- 11.6 The start line shall be between a staff displaying an orange flag on the RC Signal Vessel and **R2**.
- 11.7 **[DP]** After the Warning signal for the first start, boats shall stay clear of the starting area until four (4) minutes before their scheduled starting time.
- 11.8 In the event a postponement is signaled on the water, the RC shall announce the revised start times on VHF channel 73 before lowering flag AP.

## **12 RECALLS**

- 12.1 If any part of a boat's hull, crew or equipment is on the course side of the starting line at her starting signal and she is identified, she shall be considered On Course Side (OCS). She shall not attempt to clear herself, start, or restart, and shall, instead, sail to the first mark. The race committee will attempt to broadcast her sail number on VHF channel 73. Flag X will not be used. This changes RRS 29.1.
- 12.2 **[DP] [NP]** A boat that is scored OCS shall, without a hearing, be penalized by having ten (10) minutes plus the amount of time that she was over early added to her elapsed time. In RRS 28, the word "start" is replaced with "start or take a penalty in accordance with SI 13.2". This changes RRS 28, 63.1, A4, and A5.

## **13 THE FINISH**

- 13.1 The finishing line shall be between a staff displaying an orange flag on the RC vessel and **R2**.
- 13.2 The RC may shorten the course at any rounding mark in accordance with RRS 32.

## **14 PENALTY SYSTEM**

- 14.1 RRS Appendix V1, Penalty at the Time of An Incident, will apply.
- 14.2 RRS Appendix V2, Penalty Taken After A Race, will apply, and is changed to: "After a race, a boat that may have broken one or more rules of Part 2 or RRS 31 in an incident while racing may take a Post-Race Penalty for that incident. A boat takes the penalty by delivering a written notice to the race office or sending an email to [race.committee@eastportyc.org](mailto:race.committee@eastportyc.org) that identifies the race number and when and where the incident occurred. However, RRS 44.1(a) and 44.1(b) apply, and the penalty shall be taken at least fifteen (15) minutes before the protest time limit."

## **15 TIME LIMIT**

- 15.1 If no boat finishes within 3-1/2 hours of the start time of the first boat, the race shall be abandoned.
- 15.2 Boats failing to finish within ninety (90) minutes after the first boat that sails the course and finishes shall be scored Did Not Finish. This changes RRS 35 and A4.

## **16 REPORT OF THE RACE COMMITTEE**

The Report of the Race Committee regarding incidents on the water shall be posted on the Official Notice Board no later than fifteen (15) minutes after the Signal Vessel docks. The report shall include scoring-related actions (DNC, DNS, OCS, ZFP, UFD, BFD, DNF, DNE) and the Signal Vessel dock time.

## **17 SCORING INQUIRIES, PROTESTS, AND REQUESTS FOR REDRESS**

- 17.1 Scoring Inquiries, Protests and Requests for Redress shall be filed with the RC Office (first floor, on the waterside of the building) within the Protest Time Limit. Forms are available outside of the office.
- 17.2 The protest time limit is sixty (60), minutes after the RC Signal Vessel dock time. This posting constitutes the notification required in RRS 61.1b and 63.2. The time limit for a Request for Redress based on an incident in the racing area shall be the Protest Time Limit. This changes RRS 62.2.
- 17.3 The Protest Committee may schedule a hearing prior to the Protest Time Limit if the parties and witnesses are present and have had time to prepare for the hearing. It is advisable that the parties and witnesses to a hearing remain on call in the vicinity of the protest room.
- 17.4 When the RC or Protest Committee protests a boat, the requirements of RRS 61.1(b) to notify the boat may be met by posting a list of protested boats on the Official Notice Board before the end of the protest time limit.





## 18 SCORING

- 18.1 PHRF ratings will be in accordance with the PHRF ToD Circular Random rating, and boats will be scored in the order of finish.
- 18.2 One-design scoring will be granted for any class with at least six (6) entries.

## 19 SAFETY

- 19.1 **[DP] [NP]** A boat that retires from a race shall notify the RC as soon as possible either by hail or on VHF channel 73, or via the EYC cell phone, (410) 271-7193, or via email at [race.committee@eastportyc.org](mailto:race.committee@eastportyc.org). A voicemail message shall include the approximate time of the message, the name and contact information of the caller, the boat name, and its sail number.
- 19.2 **[DP]** A boat shall not exercise right of way, cross in proximity to, or interfere with reasonable transit of the race area by commercial ships, tugs, or barges. Boats must take evasive action well in advance of a potentially dangerous situation. The US Coast Guard, ship captains, and bay pilots have been encouraged to report any incident they observe.
- 19.3 **[DP]** A boat without way may use any means of propulsion to avoid underway commercial traffic, provided:
- (a) the boat does not gain an advantage;
  - (b) using the propulsion is the boat's only means of avoiding the commercial traffic; and,
  - (c) the boat submits a report (in writing or by email) to the RC by the protest filing deadline that describes the incident and the boat's actions.
- 19.4 **[DP]** The RC or Protest Committee may protest a boat for SI 18.2 and 18.3 based on information received from any source. The protest time limit does not apply. This changes RRS 60.2, 60.3, and RRS 61.3.

## 20 DISPOSAL OF TRASH

**[DP]** This is a Clean Race. All competitors are strongly encouraged to use multi-use water bottles instead of disposable water bottles and to recycle whenever possible. RRS 55 prohibits placing trash in the water.



## 21 RADIO COMMUNICATION

- 21.1 **[DP] [NP]** Boats shall have a working VHF radio capable of communicating on VHF channels 9, 13, 16, and 73.
- 21.2 RC shall communicate with competitors on VHF channel 73. A boat may not base a request for redress on the failure to hear or receive radio communications, the timeliness of communication, or in the case of recalls, the order in which boats are announced. This changes RRS 41 and 62.1(a).
- 21.3 Boats are encouraged to make contact with commercial traffic on VHF channel 13, as required for safety.
- 21.4 A boat's failure to hear a broadcast, the RC's failure to broadcast, or the content of any broadcast shall not be grounds for redress. This changes RRS 41 and 62.1(a).
- 21.5 Specially-designated and equipped CRAB boats may communicate with their designated safety boat.

## 22 PRIZES

- 22.1 Prizes for 1<sup>st</sup>, 2<sup>nd</sup>, and 3<sup>rd</sup> Places will be awarded for the Overall finish positions in the pursuit race.
- 22.2 Special trophies for 1<sup>st</sup> and 2<sup>nd</sup> Places will be awarded in the **CRAB** class.
- 22.3 Prizes in all classes (except for the **CRAB** class) will be as follows:
- 1<sup>st</sup> Place for three (3) or more entries;
  - 1<sup>st</sup> and 2<sup>nd</sup> Places for five (5) or more entries; and,
  - 1<sup>st</sup>, 2<sup>nd</sup>, and 3<sup>rd</sup> Place for seven (7) or more entries.
- 22.4 The North Sails Fleet Award will be presented to the class raising the most funds for CRAB Cup.
- 22.5 An award for the Best Dressed crew/team will be judged at the post-race party, prior to prizegiving.
- 22.6 Participants who compete in all three (3) Annapolis-based charity regattas – Leukemia Cup, CRAB Cup, and Hospice Cup – will be eligible for the Weems & Plath Triple Crown Trophy, to be awarded at the end of the season. The final standings will be a combination of race and fundraising results across all events.

## 23 DISCLAIMER OF LIABILITY

Boats participate in the CRAB Cup entirely at their own risk; see RRS 4. The OA will accept no liability for material damage, personal injury, or death sustained in conjunction with or prior to, during, or after the event.





## CRAB Cup – Pursuit Race



### 24 INSURANCE

**[DP] [NP]** Each boat shall be insured with valid third party liability insurance with a minimum coverage of \$300,000.

### 25 SOCIAL

A post-race party and trophy presentation will be held at EYC, 317 First Street, Annapolis, immediately after racing concludes and is open to participants and CRAB supporters. A bar will open at 1600 hours. Food service and a live band will be from 1700-2000 hours. Entry, food, and drink tickets will be available at the party.

#### HOST SPONSOR



#### FOUNDING SPONSOR



#### PLATINUM SPONSORS



#### GOLD SPONSOR



eastportyc\_race

@eastportyc\_race







## CRAB Cup – Pursuit Race

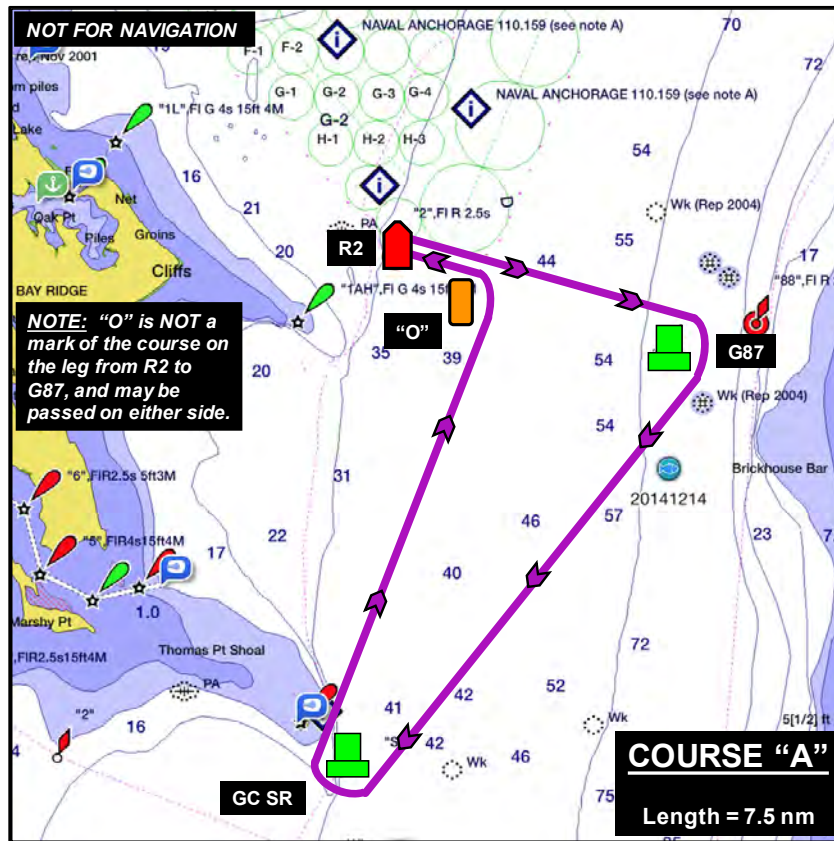


FIGURE 1. Pursuit Race Course Diagrams