

CEDAR POINT YACHT CLUB

Westport, CT

2019 SAILING INSTRUCTIONS

1 Rules

1.1 All races shall be governed by the rules as defined in *The Racing Rules of Sailing*.

1.2 Amendments to these sailing instructions shall be posted on the official notice board on the south wall of the CPYC clubhouse and may be available on the CPYC website (<http://www.cedarpointyc.org>).

1.3 These sailing instructions do not govern LIMA racing. Separate LIMA Sailing Instructions are available at the clubhouse and CPYC website. When the RC intends to use the LIMA Sailing Instructions, the RC shall announce its intention on the official notice board.

2 Notices to Competitors

2.1 Notices to competitors shall be posted on the official notice board.

2.2 Race Committee broadcasts may be made over VHF radio. Competitors may receive VHF radio transmissions from the Race Committee concerning safety, notice of on course side (OCS) boats, and general information to assist in the management of the event.

3 Changes to Sailing Instructions

3.1 Any change to these sailing instructions shall be posted on the official notice board before 1100 on the day it will take effect.

4 Signals Made Ashore

4.1 Signals made ashore shall be displayed either on the CPYC flagpole or on a race committee vessel in the basin.

4.2 When code flag AP is displayed ashore, the time to warning signal '1 minute' is replaced by 'not less than 60 minutes'. When one or more class flags are displayed with AP, only starts for those classes so designated shall be postponed.

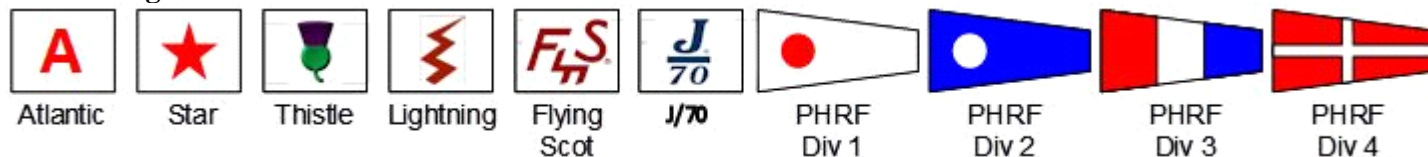
5 Schedule of Races and Starting Times

5.1 The schedule of races and the time of the first warning signal are indicated in the Notice of Race.

5.2 For all classes racing, additional races may be held on any day at the sole discretion of the Race Committee.

5.3 The Race Committee may display code flag H at the finish of a race when racing has been completed for the day. If a class flag is displayed under code flag H, racing is completed only for that class.

6 Class Flags



PHRF boats shall prominently display the appropriate numeral pennant for their division.

7 Racing Area

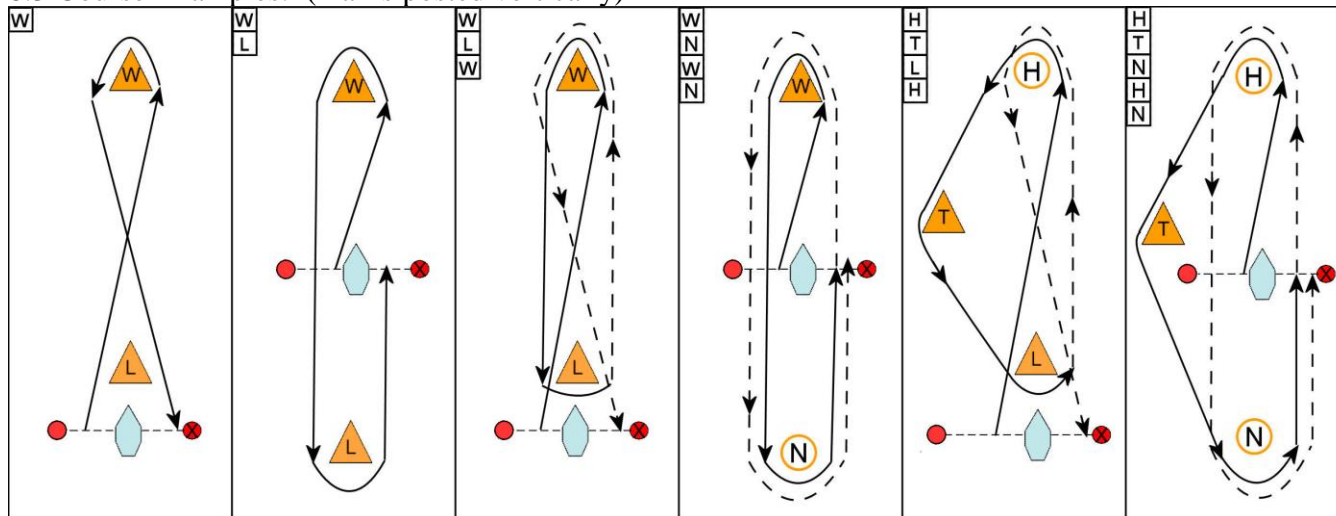
The racing area will be in the vicinity of the marks shown.

8 Courses

8.1 Courses shall be displayed on a race committee signal vessel using letters, posted vertically, to designate the marks. Boats shall pass each mark in descending order leaving them on the same side as the starting mark and then finish at X.

8.2 No later than the warning signal for each class, the Race Committee signal vessel may display the approximate compass bearing to the first mark.

8.3 Course Examples: (marks posted vertically)



9 Marks

9.1 Fixed and movable marks, as described, will be used.

9.2 If W and Y marks are used as windward marks for different fleets, W mark shall be further upwind than Y mark.

10 Areas That Are Obstructions

Several of the standard CPYC racing marks are located near shore or in shallow water. Sailors are advised to be aware of their location on the race course, and consult current local charts for hazardous areas. Government Mark G “1” shall be passed on the channel side.

11 The Start

11.1 The start for each class/division may be displayed with the class/division insignia card on the race committee signal vessel.

11.2 The starting line shall be between an orange flag on the race committee signal vessel and the starting mark.

11.3 When code flag C is displayed at the warning signal for a class, the first mark of the course shall be a “change mark” as defined in 13.2. In this event, code flag C shall be displayed throughout the starting sequence for that class.

11.4 Races shall be started using rule 26, unless code flag T is displayed. If code flag T is displayed before the warning signal for any class, the start shall use Audible-Signal Racing System of Appendix U, three minute audible signal racing system.

11.5 A series of short sound signals or hails may be made before each sequence begins in order to attract attention.

11.6 A boat starting later than four minutes after her starting signal shall be scored Did Not Start (DNS) without a hearing. This changes RRS 62, A4 and A5.

12 Recalls

12.1 When an individual recall is signalled, the race committee may attempt to hail boat (s) that are OCS.

12.2 When starting penalty rule 30.1 is in effect, the race committee may attempt to hail boats that are OCS during the minute before the starting signal.

12.3 The timing and order of such hails or the failure of a boat to hear the hail will not be grounds for redress. This changes RRS 62.

13 Change of Course

13.1 If fixed marks and moveable marks are used in combination, the RC shall display the “change mark” by complying with rule 33 and displaying the new mark.

13.2 If the position of a movable mark is changed, the “change mark” shall be identified with a black band and the original mark will be removed as soon as practicable. If a subsequent change is made, the “change mark” shall be replaced with a mark without a black band.

13.3 When changing the course, one or more class flags displayed with code flag C means the course is changed only for the class (es) so designated. If no class flags are displayed, the change applies to all classes for whom the nearby mark is a mark of the course.

13.4 When shortening the course, one or more class flags displayed with code flag S means the course is shortened only for the class (es) so designated. If no class flags are displayed, code flag S applies to all classes for whom the nearby mark is a mark of the course.

14 The Finish

14.1 The finishing line shall be between an orange flag on the race committee signal vessel and the finishing mark X, placed on the opposite side of the race committee vessel from the starting mark.

15 Time Limits

15.1 The time limit for all one design fleet races and Wednesday Night racing is 1.5 hours.

15.2 The time limit for PHRF Weekend and Cup races is three hours and five hours for the PHRF Navigator races.

15.5 If at least one boat in a class sails the course and finishes within the time limit, then boats still racing 30 minutes after the first boat in their class has finished shall be recorded as Time Limit Expired (TLE). TLE results are scored points equal to one more than the last finisher but not worse than Did Not Finish (DNF). This changes RRS 35, 63.1 A4, and A5.

16 Protests and Requests for Redress

16.1 A boat intending to protest shall follow the requirements of rule 61, and must notify the Race Committee upon finishing. This changes RRS 61.1(a). Written protests shall be delivered to the Principal Race Officer or placed in the Protest Form Drop-Box in the Governor’s Room not later than one hour after the race committee signal vessel docks. The time of docking shall be posted on the official notice board. Protest forms are available at the clubhouse.

16.2 Appendix V will apply.

16.3 Notices shall be posted on the official notice board within 15 minutes after the end of the protest time limit to inform competitors of hearings in which they are parties. Protest hearings shall be held in the Governors’ Room as soon as practical.

16.4 Breaches of instructions 6, 18.1, 18.2 or 18.3 shall not be grounds for a protest by a boat. This changes RRS 60.1(a). Penalties for any breach of these rules may be less than disqualification if the protest committee so decides.

17 Scoring

17.1 Each class shall score races according to their published amendments, which shall describe the method of scoring of individual races, series and the season; the number of races required to be completed to constitute a series; qualification criteria; methods for breaking ties; the scoring of guests; and such other matters as they publish.

17.2 Finishes shall not be recorded for a class with fewer than three starters.

18 Check-In and Safety

18.1 Prior to starting the first race of the day in which it intends to compete, each boat shall pass by the stern of the race committee signal vessel, leaving the race committee signal vessel to the starboard side, hail its sail number (and division for PHRF boats), and receive an acknowledgement from the Race Committee. Boats that fail to comply shall be scored Did Not Start (DNS). This changes rule A4.1.

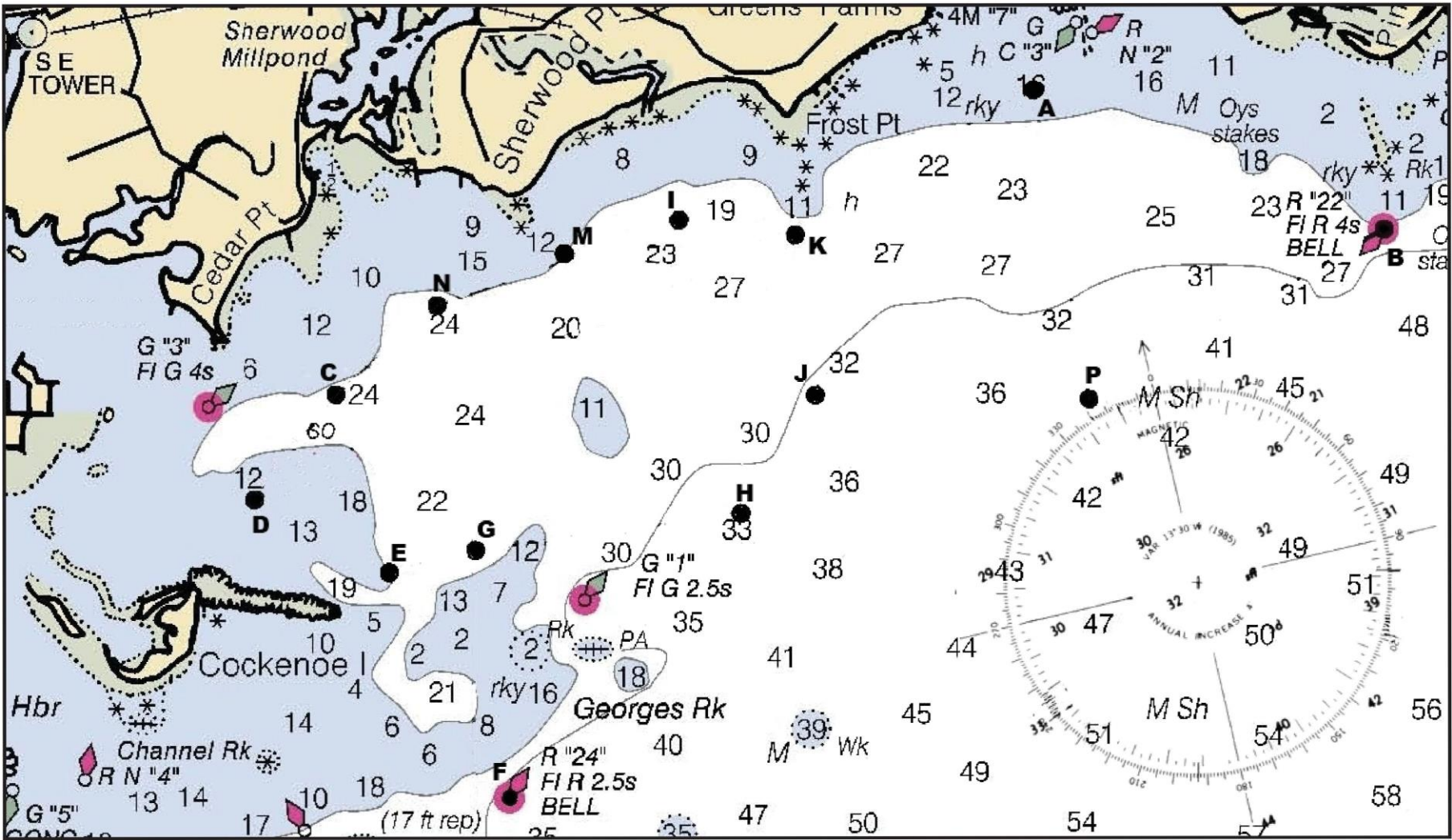
18.2 A boat must notify the Race Committee or CPYC management if it withdraws from a race or departs early from the racing area. CPYC monitors **channel 78**.

18.3 All boats shall carry safety equipment prescribed by their respective classes, fleets and government regulations.

- A Orange shape
B Red bell buoy "22"
C White shape, orange bands
D White shape, orange bands
E White shape, orange bands
F Red bell buoy "24"
G White shape, orange bands
H White shape, orange bands
I White shape, orange bands
J White shape, orange bands
K White shape, orange bands
L Orange shape
M White shape, orange bands
N White shape, orange bands
P Orange shape

MOVABLE MARKS

- W Orange windward turning mark
Y Yellow windward turning mark, closer to the starting line than W.
T Orange wing turning mark. The mark's location forms a triangle between a windward and a leeward mark.
L Orange leeward turning mark. The mark's location may be upwind or downwind of the signal boat.
X Red ball finishing mark.



		TO:													
		A	B	C	D	E	F	G	H	I	J	K	M	N	P
Mark Bearings and Ranges	FROM: A	----	119/1.4	**	**	248/2.7	230/2.9	245/2.4	228/1.6	**	229/1.2	256/0.8	**	**	179/1.0
	B	299/1.4	----	275/3.7	270/4.1	265/3.7	251/3.6	264/3.4	260/2.5	285/2.5	267/2.1	283/2.0	282/2.9	279/3.3	255/1.2
	C	**	095/3.7	----	231/0.5	174/0.7	**	152/0.7	120/1.5	077/1.3	104/1.7	085/1.7	072/0.9	063/0.5	104/2.6
	D	**	090/4.1	051/0.5	----	132/0.5	**	117/0.8	105/1.7	070/1.8	094/2.0	078/2.1	065/1.4	057/0.9	097/2.9
	E	068/2.7	085/3.7	354/0.7	312/0.5	----	**	089/0.3	094/1.2	053/1.6	081/1.6	064/1.9	042/1.3	024/0.9	090/2.5
	F	050/2.9	071/3.6	**	**	**	----	**	052/1.2	029/2.1	050/1.7	040/2.2	**	**	068/2.4
	G	065/2.4	084/3.4	332/0.7	297/0.8	269/0.3	**	----	096/0.9	045/1.4	080/1.3	059/1.6	030/1.1	005/0.9	090/2.2
	H	048/1.6	080/2.5	300/1.5	285/1.7	274/1.2	232/1.2	276/0.9	----	002/1.0	046/0.5	026/1.0	340/1.1	318/1.3	085/1.3
	I	**	105/2.5	257/1.3	250/1.8	233/1.6	209/2.1	225/1.4	182/1.0	----	157/0.8	110/0.4	268/0.4	264/0.9	128/1.5
	J	049/1.2	087/2.1	284/1.7	274/2.0	261/1.6	230/1.7	260/1.3	226/0.5	337/0.8	----	009/0.6	314/1.0	298/1.4	103/0.9
	K	076/0.8	103/2.0	265/1.7	258/2.1	244/1.9	220/2.2	239/1.6	206/1.0	290/0.4	189/0.6	----	279/0.8	273/1.3	134/1.1
	M	**	102/2.9	252/0.9	245/1.4	222/1.3	**	210/1.1	160/1.1	088/0.4	134/1.0	099/0.8	----	261/0.5	119/1.9
	N	**	099/3.3	243/0.5	237/0.9	204/0.9	**	185/0.9	138/1.3	084/0.9	118/1.4	093/1.3	081/0.5	----	112/2.3
	P	359/1.0	075/1.2	284/2.6	277/2.9	270/2.5	248/2.4	270/2.2	265/1.3	308/1.5	283/0.9	314/1.1	299/1.9	292/2.3	----

** = No direct line between marks

Note - Approximate bearings between marks, reported as magnetic