



# Annapolis YC Double Handed Distance Race September 28-29, 2019

Organizing Authority: Annapolis Yacht Club  
Annapolis, Maryland, USA

<http://www.annapolisyc.com/racing/regattas>

## SAILING INSTRUCTIONS

The notation '[DP]' in a rule in the sailing instructions (SIs) or notice of race (NoR) means that the penalty for a breach of that rule may, at the discretion of the protest committee, be less than disqualification. The notation '[NP]' in a rule of the SIs or NoR means that a boat may not protest another boat for breaking that rule. This changes RRS 60.1(a).

### 1 RULES

- 1.1 The regatta will be governed by the rules as defined in The Racing Rules of Sailing (RRS).
- 1.2 The US Sailing Safety Equipment Regulations (SER) Coastal apply as changed by NoR 1.2.

### 2 COMMUNICATIONS WITH COMPETITORS

- 2.1 Notices to competitors will be posted on the official notice board (ONB) located at: <https://yachtscoring.com/emenu.cfm?eID=9531>
- 2.2 The race office is located at the western end of the 3rd floor of the AYC Sailing Center, and can be reached by telephone at 410-858-4964 or by email at [raceoffice@annapolisyc.org](mailto:raceoffice@annapolisyc.org). Forms are available at the race office or online at <https://annapolisyc.com/racing/raceoffice>.
- 2.3 On the water, the race committee intends to monitor and communicate with competitors via VHF radio on channel 72. To initiate a DSC call to the race committee, use these MMSI numbers:

Signal Boat	Racketash	MMSI	367 624 770
Chase Boat	Sundog	MMSI	338 236 945

- 2.4 Official communications regarding changes to the course after the starting signal will be announced on VHF DSC radio, posted on the ONB and sent to all competitors via SMS text message.

### 3 CHANGES TO SAILING INSTRUCTIONS

- 3.1 Any change to the SIs will be posted no later than 0900 on the day it will take effect, except that any change to the schedule of races will be posted by 2000 on Friday, September 27, 2019.

### 4 SIGNALS MADE ASHORE

- 4.1 Signals made ashore will be displayed from the flagpole at the AYC Clubhouse.
- 4.2 When flag AP is displayed ashore, '1 minute' is replaced with 'not less than 60 minutes' in the race signal AP.

### 5 SCHEDULE OF RACES

- 5.1 The race schedule will be:

Day	Time	Scheduled Action
Sep 28	1200	J/105 Class Warning
Sep 28	1210	ORC Class Warning

- 5.2 [DP][NP] A mandatory skippers meeting is scheduled at the AYC Sailing Center at 1700 on September 27, 2019.

### 6 CLASS FLAGS

- 6.1 The class flags are:

Class	Class flag
J/105	Flag V
ORC	Numeral Pennant 1

### 7 RACING AREA

- 7.1 The racing area will be the Chesapeake Bay between latitude N39° 00' (Chesapeake Bay Bridge) and latitude N38° 00' (Point Lookout).
- 7.2 The approximate location of the starting area is shown in SI Attachment A.
- 7.3 Approximately 30 minutes prior to the first scheduled warning signal, the race committee will announce the location of the race committee signal vessel.

## **8 THE COURSES**

- 8.1 The course to be sailed will be comprised of marks selected from the list of aids to navigation shown in SI Attachment B.
- 8.2 No later than 0900 on September 28, the course to be sailed will be announced by the race committee on VHF DSC radio, posted on the ONB and sent to all competitors via SMS text message.
- 8.3 The following navigational aids shall be passed at all times on the channel side:
- (a) Horn Point Light HP, 38° 58.4102'N, 076° 28.1521'W
  - (b) Annapolis Harbor Entrance Light 4, 38° 58.1041'N, 076° 27.4623'W
  - (c) Naval Anchorage Light A, 38° 58.0085'N, 076° 27.1500' W
  - (d) Annapolis Harbor Channel Light 1AH, 38° 56.1497'N, 076° 26.1664'W
  - (e) Thomas Point Shoal Light, 38° 53.9406'N, 076° 26.1489'W

## **9 MARKS**

- 9.1 The pin end starting mark will be a lime green cylinder.
- 9.2 All other marks of the course will be selected from the government navigation aids shown in SI Attachment B.
- 9.3 The race committee starting vessel may set a stand-off buoy. When present, this stand-off buoy, the line attaching it to the race committee vessel, and the race committee vessel are all part of the starting mark.

## **10 THE START**

- 10.1 The starting line will be between the staff or halyard with an orange flag displayed on the race committee signal vessel and the course side of the starting mark.
- 10.2 [DP] Boats whose warning signal has not been made shall avoid the starting area during the starting sequence for other races.
- 10.3 A boat that does not start within 30 minutes after her starting signal will be scored Did Not Start without a hearing. This changes RRS A4 and A5.

## **11 RECALLS**

The race committee will announce on VHF radio boats identified as OCS, UFD, or BFD. A boat may not base a request for redress on the failure to hear or receive the announcements, the timeliness of announcement or the order in which boats are announced. This changes RRS 62.1(a).

## **12 CHANGE OF THE NEXT LEG OF THE COURSE**

- 12.1 After the start, flag C displayed over flag F at a nearby rounding mark means the remainder of the course is changed.
- 12.2 When C over F is displayed with repetitive sounds, all boats shall
- (a) round the nearby mark on its required side,
  - (b) round DH Mark C (Annapolis Harbor Channel Buoy "13") to port, and
  - (c) proceed to the finishing line.
- This changes RRS 33 and Race Signals.

## **13 THE FINISH**

- 13.1 The finishing line will be between the flagpole with yard arm at the Annapolis City Marina and the staff or halyard displaying an orange flag on the second deck of the AYC Clubhouse.

## **14 PENALTY SYSTEM**

- 14.1 Penalties while racing: RRS 44.1, One-Turn and Two-Turns Penalties will apply.
- 14.2 Penalties after racing: RRS/US Appendix V2, Penalty Taken After the Race, will apply.

## **15 TIME LIMITS**

- 15.1 There is no race time limit.
- 15.2 Boats failing to finish within 12 hours after the first boat sails the course and finishes will be scored Did Not Finish without a hearing. This changes RRS 35, A4 and A5.

## **16 PROTESTS, REQUESTS FOR REDRESS, SCORING INQUIRIES**

- 16.1 Protest forms, scoring inquiry forms, and penalty acceptance forms shall be delivered to the race office.
- 16.2 Protests, requests for redress or reopening shall delivered to the race office by the protest time limit.
- 16.3 When the race committee receives a scoring inquiry form, it will review its records and respond as soon as practicable.
- 16.4 The protest time limit is 1300 on Sunday, September 29, or 90 minutes after a boat finishes, withdraws or retires, whichever is later.
- 16.5 The race committee will post a list of race committee scoring actions no later than the protest time limit.
- 16.6 Notices of protests by the race committee or protest committee will be posted to inform boats under RRS 61.1(b).
- 16.7 As soon as practicable after the protest time limit, the protest committee will post a notice to inform competitors of the schedule and location of hearings in which they are parties or named as witnesses.

## 17 SCORING

- 17.1 RRS Appendix A4, Low Point System, will apply.
- 17.2 Corrected times for the ORC class will be calculated using ORC Time-on-Time Triple Number ratings. The race committee will announce the course type (“Inshore/Windward Leeward” or “Coastal/Long Distance”) and the wind speed rating (Low, Medium, or High) on VHF radio prior to the warning signal.

## 18 SAFETY REGULATIONS

- 18.1 [DP] A boat that retires from the race shall notify the race committee on VHF 72 or the Race Office, at the first reasonable opportunity.
- 18.2 [NP] [DP] A boat shall not exercise right of way, cross in proximity to, or interfere with reasonable transit of the race area by commercial ships, tugs, or barges. Boats must take evasive action well in advance of a potentially dangerous situation. The US Coast Guard, ship captains, and bay pilots have been encouraged to report any incident they observe.
- 18.3 A boat without way may use any means of propulsion to avoid commercial traffic that is under way provided: (a) the boat does not gain an advantage; (b) use of the propulsion is the

boat's only means of avoiding the commercial traffic; and (c) the boat submits a report to the race office (in writing or by e-mail to [raceoffice@annapolisyc.org](mailto:raceoffice@annapolisyc.org)) by the protest time limit, describing the incident and the boat's actions.

- 18.4 The race committee or protest committee may protest a boat for SI 18 based on information received from any source. A written statement from the US Coast Guard, a ship captain, or a bay pilot will be accepted as evidence without the author present. The protest time limit does not apply. This changes RRS 60.2, 60.3, 61.3, and 63.6.

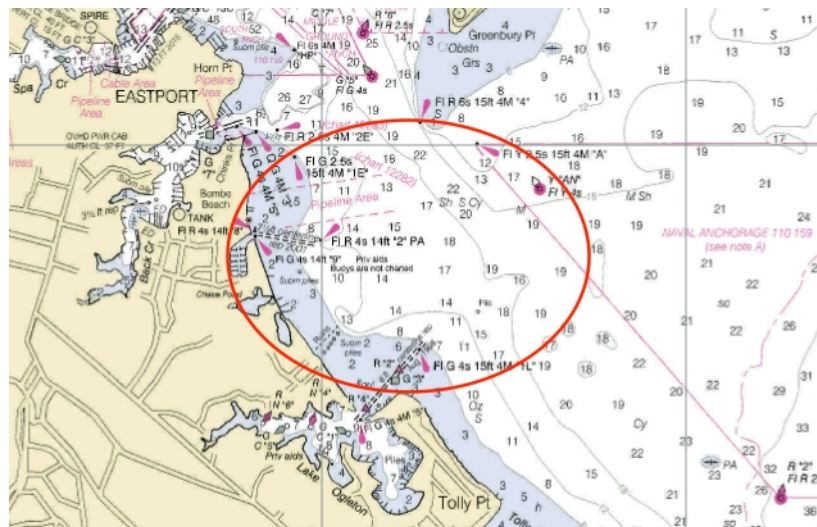
## 19 PRIZES

- 19.1 First, second and third place trophies will be awarded in each class.
- 19.2 The awards presentation is scheduled for 1700 on Sunday, September 29, at the main AYC clubhouse.

## 20 DISCLAIMER OF LIABILITY

Competitors participate in the regatta entirely at their own risk. See RRS 4, Decision to Race. The organizing authority will not accept any liability for material damage or personal injury or death sustained in conjunction with or prior to, during, or after the regatta.

## SI ATTACHMENT A - STARTING AREA



The starting line will be located in the Severn River near 38° 57.5' N, 076° 27.5' W. See SI 7.

## SI ATTACHMENT B - LIST OF MARKS

The course(s) to be sailed will be announced by the race committee in accordance with SI 8 and will be comprised of marks selected from this list of aids to navigation. This list is sorted by latitude from north to south.

DH Race Tag	NOAA Object Name	Mark Identification	NOAA Position
A	Chesapeake Channel Lighted Buoy 91	"91" FL G 4s	38° 58.9851' N 076° 23.2758' W
B	Chesapeake Channel Lighted Bell Buoy 92	"92" FL R 4 s BELL	38° 58.9301' N 076° 23.0758' W
C	Annapolis Harbor Channel Buoy 13	Buoy G "13"	38° 58.9281' N 076° 28.4106' W
D	Spa Creek Entrance Buoy 1SC	1SC	38° 58.5849' N 076° 28.7979' W
E	Annapolis Harbor Entrance Lighted Buoy 6	R"6" FL R 2.5s	38° 58.4833' N 076° 27.7750' W
F	R "90" Chesapeake Channel Lighted Buoy 90	"90" FL R 2.5s	38° 58.3084' N 076° 23.3158' W
G	Annapolis Harbor Entrance Lighted Buoy 5	G"5" FL G 4s	38° 58.2969' N 076° 27.7244' W
H	Hackett Point Shoal Buoy 1	C"1"	38° 58.1995' N 076° 24.8714' W
J	Annapolis Harbor Entrance Light 4	FL 6s 14.8 ft 7 Nm	38° 58.1041' N 076° 27.4623' W
K	Annapolis Harbor Channel Lighted Bell Buoy 2	R"2" FL R 2.5s	38° 56.4998' N 076° 25.4828' W
L	Chesapeake Channel Lighted Buoy WR87	"WR87"QG	38° 55.9688' N 076° 23.5463' W
M	South River Entrance Buoy 2	N"2"	38° 53.7444' N 076° 27.8693' W
N	South River Junction Buoy SR	SR	38° 53.6664' N 076° 25.8693' W
P	Chesapeake Channel Lighted Buoy 86	"86"FL R 4s	38° 51.9736' N 076° 23.5473' W
Q	West River Lighted Buoy 1	"1" FL G 4s	38° 51.8425' N 076° 26.9921' W
R	Eastern Bay Lighted Bell Buoy 2A	2A FL R 4s	38° 50.5607' N 076° 18.2142' W
S	Chesapeake Bay Buoy 85A	C"85A"	38° 49.9483' N 076° 27.7250' W
T	Chesapeake Channel Lighted Buoy 84A	"84A" FL R 2.5s	38° 47.5937' N 076° 24.6888' W
U	Chesapeake Channel Buoy 83A	"83A"	38° 46.1328' N 076° 29.7026' W
V	Chesapeake Channel Lighted Bell Buoy 84	"84" FL R 4s	38° 45.4571' N 076° 25.1138' W
W	Chesapeake Channel Lighted Gong Buoy 83	"83" FL G 4s	38° 45.1254' N 076° 26.6555' W
X	Chesapeake Channel Buoy 81A	"81A"	38° 43.5755' N 076° 29.9401' W
Y	Chesapeake Channel Lighted Buoy 82	"82" FL R 4s	38° 42.0738' N 076° 25.3304' W
Z	Chesapeake Channel Lighted Whistle Buoy CR	"CR" MO (A) 8s 6 Nm	38° 38.9572' N 076° 24.8971' W
AA	Chesapeake Channel Buoy 79A	"79A"	38° 38.6583' N 076° 29.1845' W
AB	Chesapeake Channel Lighted Buoy 78A	"78A" FL R 2.5s	38° 34.7000' N 076° 25.8833' W
AC	Chesapeake Channel Lighted Buoy 78	"78"FL R 4s RACON	38° 33.3164' N 076° 25.6536' W
AD	Chesapeake Channel Buoy 77B	"77B"	38° 31.1294' N 076° 28.9698' W
AE	Chesapeake Channel Buoy 77A	"77A"	38° 28.5674' N 076° 27.2763' W
AF	Chesapeake Channel Lighted Whistle Buoy CP	RW "CP" MO (A) 8s 6 Nm	38° 28.1895' N 076° 22.5575' W
AG	Chesapeake Channel Lighted Buoy 76	"76" FL R 4s	38° 21.3907' N 076° 18.5401' W
AH	Chesapeake Channel Lighted Buoy 77	"77"FL G 2.5s	38° 21.0824' N 076° 21.6936' W
AJ	Chesapeake Channel Lighted Buoy 74	"74" FL R 2.5s	38° 18.9150' N 076° 17.0566' W
AK	Chesapeake Channel Mid Channel Lighted Whistle Buoy HI	RW "HI" MO (A) W 8s 6 Nm	38° 18.6748' N 076° 18.6745' W
AL	Patuxent River Lighted Bell Buoy 1PR	FL (1) 4s 4 Nm	38° 18.2290' N 076° 21.1706' W
AM	Hooper Island Light	FL 6s 63ft	38° 15.3764' N 076° 14.9869' W
AN	Chesapeake Channel Lighted Buoy 72B	"72B" FL R 2.5s	38° 15.3667' N 076° 15.7833' W
AP	USN Aerial Gunnery Area Lighted Buoy C	"C" FL Y 4s	38° 13.1780' N 076° 18.2665' W
AQ	USN Aerial Gunnery Area Lighted Buoy D	"D" FL Y 2.5	38° 12.8551' N 076° 19.8506' W
AR	Chesapeake Channel Mid-Channel Lighted Whistle Buoy HS	"HS" Mo (A) WHIS	38° 12.3109' N 076° 14.5251' W
AS	Chesapeake Channel Lighted Buoy 72A	"72A" FL R 4s	38° 10.0000' N 076° 13.5500' W
AT	Point No Point Light	FL 6s 52 ft	38° 07.6875' N 076° 17.4162' W
AU	Chesapeake Channel Lighted Buoy 72	"72" FL R 2.5s	38° 06.9075' N 076° 12.9132' W
AV	Chesapeake Channel Buoy 69A	C"69A"	38° 02.3373' N 076° 17.4188' W
AW	Chesapeake Channel Lighted Buoy 70	"70" FL R 4s	38° 01.6908' N 076° 12.2798' W
AX	Potomac River Mid-Channel Lighted Whistle Buoy A	MO (A) 8s 6 Nm	38° 00.8526' N 076° 20.6635' W