



LEUKEMIA &  
LYMPHOMA  
SOCIETY®

LEUKEMIA  
CUP REGATTA®

Charleston Ocean



Racing Association

# 2019 Leukemia Cup Regatta

Organizing Authority (OA): Charleston Ocean Racing Association (CORA)

September 20<sup>th</sup> – 21<sup>st</sup>, 2019

Charleston, SC

## SAILING INSTRUCTIONS

(version 08/29/2019)

### 1 RULES

The regatta will be governed by the rules as defined in *The Racing Rules of Sailing* (RRS).

### 2 NOTICES TO COMPETITORS

Notices to the competitors will be posted on the CORA website and which will also serve as the official notice board. (Also Yacht Scoring) <https://www.yachtscoring.com>

### 3 CHANGES IN THE SAILING INSTRUCTIONS

3.1 Any changes to the Sailing Instructions (SI) will be posted on the official notice board. Yacht Scoring Website <https://www.yachtscoring.com>

3.2 Oral changes to the SIs may be given on the water by hail from the Race Committee (RC) signal boat by displaying code flag L in accordance with RRS 90.2 (c). Changes communicated must be made before the first starting time.

### 4 SIGNALS MADE ASHORE

No signals will be made ashore. All announcements will be made via

VHF Ch 73 or on the official notice board.

## 5 SCHEDULE OF RACES

Events and Races are scheduled as follows:

Friday	September 20 <sup>th</sup>	1830	Registration and Competitors Meeting – North Sails Loft ---- 3 Lockwood Dr. Ste 101 Charleston, SC 29401
Saturday	September 21 <sup>st</sup>	1100	Start time for the first boat and race of the day
		1430	No further starting signals will be made
		1830- 2200	Leukemia Cup Party, Racing Awards, Fund raising Awards, Silent and Live Auctions, Rum Bar USS Yorktown - 40 Patriots Point Rd. - Mt. Pleasant, SC

**6 CLASS FLAGS - Class flags will not be displayed as the start is pursuit style**

**7 RACING AREAS** - The racing area will be inside Charleston Harbor.

## 8 THE COURSES

8.1 Course #1 Start - *G37p BPp R2p G27p R34s G37p BPp R2p G27p R34s* **Finish**

Course #2 Start - *R34p G27s R2s BPs G37s R34p G27s R2s BPs R37s* **Finish**

8.2 An illustration of the pursuit course is at the end of these SIs. See Appendix A

8.3 Boats shall monitor and keep clear of all commercial traffic. Boats that hinder commercial traffic to the point of five horns are subject to 20% penalty without a hearing.

## 9 MARKS

Start/Finish mark – orange ball

*BP* – FL (2+1) R 6S 5M

*G27* – G FL G 2.5S 5M

*G37* – G FL G 4S

*R2* – R FL R 2.5S 5M

*R34* – R Q R 4M

## 10 AREAS THAT ARE OBSTRUCTIONS

The following areas are designated as **obstructions**: Middle Ground & Castle Pinckney.

## 11 THE START

11.1 **The start will be pursuit style** where each vessel will be given a specific GPS start time which will be available at the Competitors Meeting and posted on the official notice board.

- 11.2 The starting area will be in the vicinity of the USS Yorktown. The starting line will be between a staff displaying an orange flag on the RC signal boat at the starboard end and a starting mark at the port end.
- 11.3 Boats who are not within five minutes of their starting time shall avoid the starting area which is defined as 100 yards in all directions from the starting line.
- 11.4 A boat starting later than 4 minutes after her starting signal may be scored Did Not Start (DNS) without a hearing. This changes rule A4.

## **12 CHANGE OF THE NEXT LEG OF THE COURSE**

There will be no course changes unless RC decides to shorten or abandon a race per RRS 32.

## **13 THE FINISH**

The finishing line will be between a staff displaying an orange flag on the RC signal boat at the port end and a finishing mark at the starboard end.

## **14 PENALTY SYSTEM**

- 14.1 The first two sentences of Rule 44.1 are changed to: “A boat may take a one-turn penalty when it may have broken a rule of Part 2 or Rule 31 while racing. However, when she may have broken a rule of Part 2 while in the zone around a mark other than a starting mark her penalty shall be a two-turns Penalty.” RRS 44.3 scoring penalty shall not apply.
- 14.1.1 Unless the course is shortened to finish at the windward mark, penalties with-in the zone of the windward mark or on the offset leg may be delayed and taken as soon as possible on the downwind leg.  
This changes RRS 44.2
- 14.2 RRS Appendix T1(b) shall apply for post-race penalties.
- 14.3 A boat that has taken a penalty turn(s) in accordance with SI 14.1 shall notify the RC.

## **15 TIME LIMITS AND TARGET TIMES**

The time limit shall be 4 hours. Additionally, boats failing to finish within 50 minutes after the first boat sails the course and finishes may be scored TLE or finished in place. This change is an addition to RRS A11.

## **16 PROTESTS AND REQUESTS FOR REDRESS**

A boat intending to protest shall comply with RRS 61 and additionally report to the RC signal boat as soon as possible after finishing, giving the RC its sail number and the sail number(s) of the protested boat(s). This changes RRS 61.

## **17 SCORING**

- 17.1 One race will constitute a regatta and the Low Point System of RRS Appendix A will apply, except no race score will be excluded.

- 17.2 If the course is shortened, RC will record finish times and scores will be calculated using time-on-distance.

## **18 SAFETY REGULATIONS**

- 18.1 Each competitor is solely responsible for his own safety and, by participation, agrees to sail at his or her own risk. CORA, Leukemia Cup Regatta, RC, ChYC nor other persons assisting with the conduct of races shall be responsible for damage or injury suffered during races or related activities up to an including death.
- 18.2 A boat that retires from a race, leaves the course area or returns to the course area shall notify the RC as soon as reasonably possible.
- 18.3 There may be a courtesy announcement on the designated VHF channel in the morning and at the end of the day's racing to communicate expected commercial traffic needs to the fleets. Boats are reminded that Charleston Harbor and its approaches have a high level of commercial traffic.

## **19 RADIO COMMUNICATION**

- 19.1 A boat intending to race shall check in with the RC using the boat name, sail number and class using VHF 74 or by verbal hail and continue to do so until acknowledged by RC.
- 19.2 Once acknowledged, boats shall switch and monitor VHF 73 for further race information.
- 19.3 RC may report visual signals displayed on VHF 73. Information reported is provided as a courtesy to competitors and does not in any way alter any competitor's responsibility to observe the RC visual signals, which govern the conduct of the racing. Errors or omissions will not be grounds for redress.

## **20 PRIZES**

One overall trophy will be awarded in each class for every three boats entered up to a maximum of three trophies per class.

## **21 DISCLAIMER OF LIABILITY**

- 21.1 Competitors participate in the regatta entirely at their own risk. (See RRS4, Decision to race). The OA or RC will not accept any liability for material damage or personal injury, or death sustained in conjunction with or prior to, during, or after the regatta.
- 21.2 CORA, the Leukemia and Lymphoma Society, RC, ChYC, their employees and volunteers do not accept responsibility for the loss of life or injury to participants

or others, or for the loss or damage to any vessel in any way or from any cause during or relating to the event.

**22 INSURANCE** Each participating boat shall be insured with valid, third party liability insurance with a minimum coverage of \$300,000 USD per event or the equivalent



## 2019 Leukemia Cup Regatta

Organizing Authority (OA): Charleston Ocean Racing Association (CORA)  
September 20<sup>th</sup> – 21<sup>st</sup>, 2019  
Charleston, SC

# SAFETY INFORMATION

### IN CASE OF AN EMERGENCY ON THE WATER:

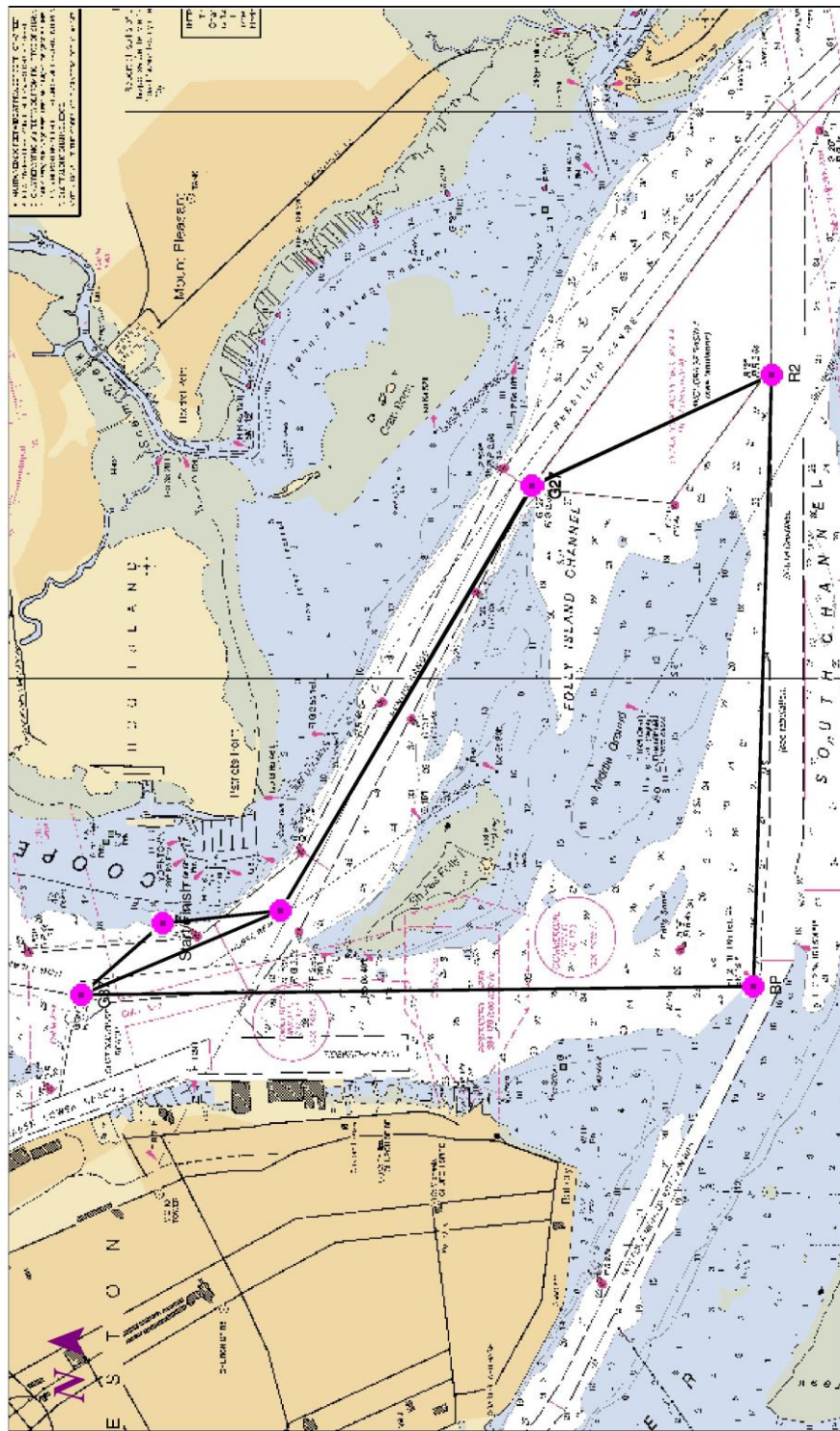
Please contact a Safety Boat on VHF **Channel 74**;  
you will then be instructed to switch to **Channel 71** for  
further transmissions.

Emergencies requiring medical assistance: Once on site,  
the Safety Boat will gather pertinent information and if  
necessary, **call 911** and proceed to Carolina Yacht Club  
with the injured person to meet with EMS personnel.

If an emergency warrants additional support, the USCG may be contacted on VHF Channel 16 for further instructions.

### Appendix A

CAPE HATTERAS TO CHARLESTON - 1 : 91,879  
(NOAA Chart #11520\_1 - Depth Units: FATHOMS)



DO NOT USE FOR NAVIGATION

Visual Series™ - Copyright © 1995-2002 Nobelltec Corporation (800-946-2877)